


See discussions, stats, and author profiles for this publication at: <https://www.researchgate.net/publication/26889642>

A classification of Nama Karoo Vegetation in southern Namibia – first results



Conference Paper · February 2010

0 CITATIONS

3 authors, including:

 Heidi Dreber
Georg-August-Universität Göttingen
32 PUBLICATIONS 288 CITATIONS
[VIEW PROFILE](#)

Some of the authors of this publication are also working on these related projects:

-  BIOE South View project
-  iSome - Rethinking biomes to create a meaningful and consistent global classification of terrestrial ecosystems View project

0 CITATIONS

 Jürgen Dengler
Zürich University of Applied Sciences
106 PUBLICATIONS 5,324 CITATIONS
[VIEW PROFILE](#)

A classification of Nama Karoo vegetation in southern Namibia – first results



Presented by:
Jens Dorendorf

Jens Dorendorf^{1,2}, Niels Dreber^{1,3}, Jürgen Dengler^{1,4}

¹Biodiversity, Evolution and Ecology of Plants, Biocentre Klein Flottbek and Botanical Garden, University of Hamburg, Ohnhorststr. 18, 22609 Hamburg, Germany
²jensdpunkt@web.de; ³n.dreber@botanik.uni-hamburg.de; ⁴dengler@botanik.uni-hamburg.de

Aims

- Providing a classification of vegetation types in rangelands of south-central Namibia
- Identifying associated environmental parameters
- Testing whether a 100 m² or a 1000 m² scale is more suitable for classification

Study area

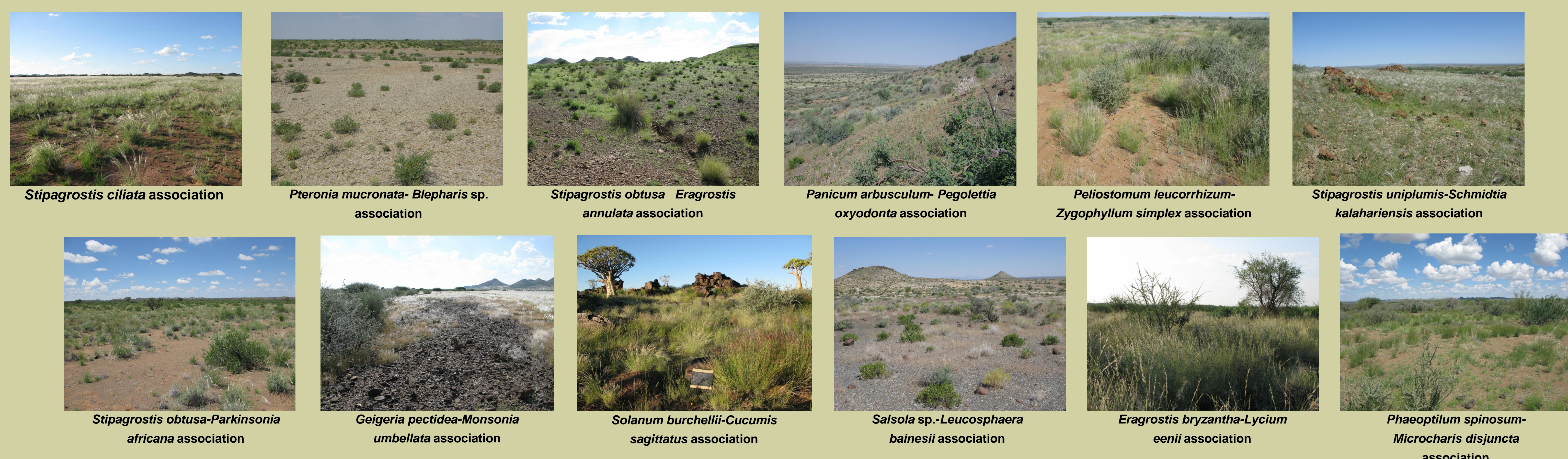
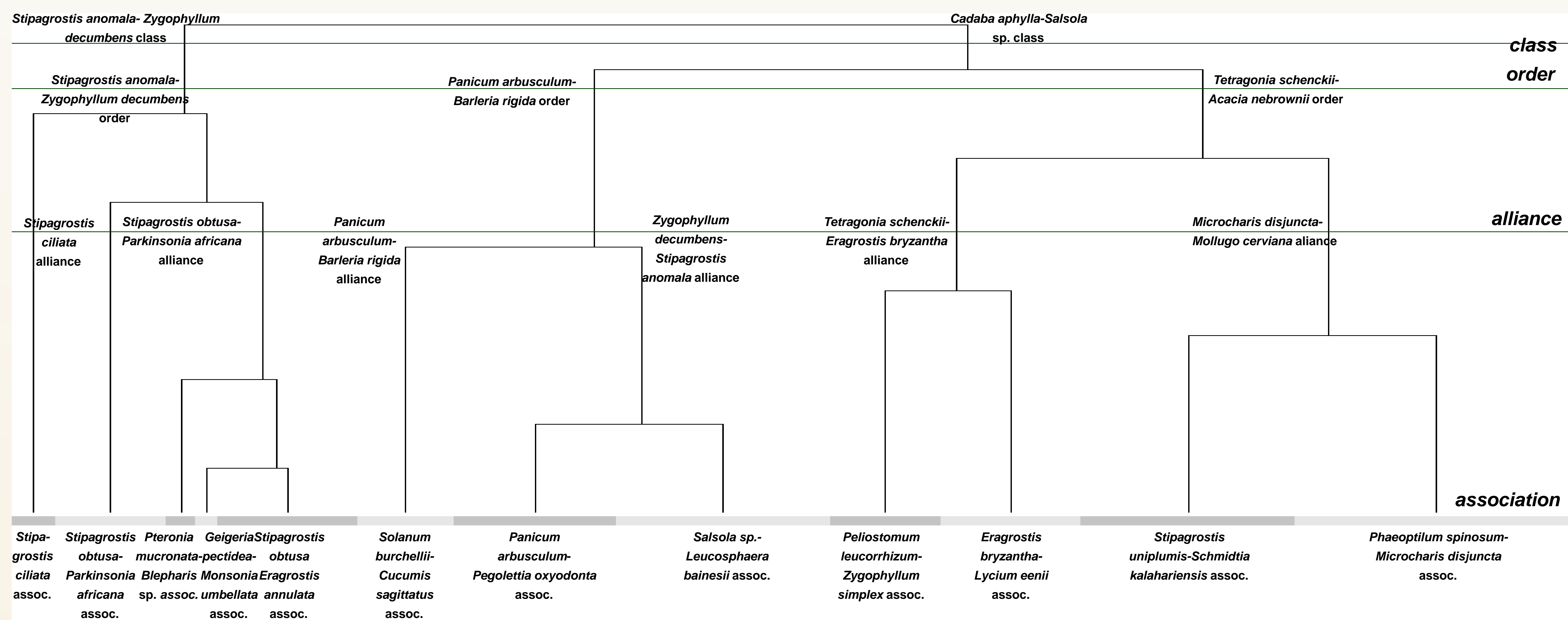
- 1800 km², north of Keetmanshoop (26° 34' S, 18° 8' O)
- Hot and dry climate (mean annual temperature: 18 to 20 °C, mean annual precipitation: 150 mm)
- Predominantly wide, open plains with rocky outcrops and riverbeds
- Vegetation is part of the Nama Karoo Biome, mainly consisting of grasslands and dwarf shrublands



Fig. 1: Study area

Methods

- In addition to vegetation relevés, we took soil samples and recorded ecological parameters.
- Data were handled with the aid of BIOTABase
- We used modified Two-Way Indicator Species Analysis (TWINSpan) to classify the relevés.
- We tested which of the two spatial scales resulted in more clearly delimited units.
- Finally, the more meaningful classification (1000-m² scale) was transformed into a hierarchical phytosociological classification.



Results

Throughout the study area, 243 plant species from 54 families were recorded. The species with the highest constancy were the perennial grass *Stipagrostis uniplumis* (76% constancy), and the annual grasses *Schmidtia kalahariensis* (64%) and *Aristida adscensionis* (60%).

Of the recorded parameters, the main driving factors for vegetation differentiation were soil depth, pH value and lime content. The final classification resulted in two classes, three orders, six alliances and 12 associations (whose formal description according to ICPN is in prep.). The modified TWINSpan for the 1000-m² scale delivered better interpretable results for Nama Karoo vegetation than the 100-m² scale.