

Afrikaans names for Plants and Animals

edited by Kathrin Heiden

This document was created from [Tsammalex](#) on 2015-05-13.

Tsammalex is published under a Creative Commons Attribution 4.0 International License and should be cited as

Christfried Naumann & Steven Moran & Guillaume Segerer & Robert Forkel (eds.) 2015. Tsammalex: A lexical database on plants and animals. Leipzig: Max Planck Institute for Evolutionary Anthropology. (Available online at <http://tsammalex.clld.org>, Accessed on 2015-05-13.)

A full list of contributors is available at <http://tsammalex.clld.org/contributors>

The list of references cited in this document is available at <http://tsammalex.clld.org/sources>

Kingdom: Animalia

Phylum: Arthropoda

Class: Arachnida

Order: other

Family: other

[Scorpiones](#) .

- skerpioen . Categories: *diere, ongewerweldes.*



PD ©



(CC) BY ©



PD-author ©

Class: Diplopoda

Order: Spirobolida?

Family: other

[Juliformia](#) .

- duisendpoot . Categories: *diere, ongewerweldes.*



Public Domain by Christfried Naumann



Public Domain by Christfried Naumann



Public Domain by Christfried Naumann

Class: Insecta

Order: Hymenoptera

Family: other

Formicidae .

- **mier** . Categories: *diere, ongewerweldes.*



Public Domain by Christfried Naumann



Public Domain by Christfried Naumann



Public Domain by Christfried Naumann

Order: Mantodea

Family: other

Mantodea .

- **hotnotsgot** . Categories: *diere, ongewerweldes.*



Public Domain by Christfried Naumann



Public Domain by Christfried Naumann

Order: Orthoptera

Family: other

Acrididae . Biotope: marshland, rainforest, scrubforest.

- **sprinkaan** . Categories: *diere, insekte, ongewerweldes.*
- **veldsprinkaan** . Categories: *diere, insekte, ongewerweldes.*



Public Domain by Christfried Naumann



Public Domain by Christfried Naumann

Phylum: Chordata

Class: Amphibia

Order: Anura

Family: Bufonidae

[Bufo gutturalis](#) (Power, 1927) .

- **padda** . "frog, toad". Categories: *amfibieë, diere*.



Public Domain by Christfried Naumann



(CC) BY-SA © Jean-Jacques ARGOUD

Family: Pyxicephalidae

[Pyxicephalus adpersus](#) Tschudi, 1838 .

- **brulpadda** . Categories: *amfibieë, diere*.
- **donderpadda** . Categories: *amfibieë, diere*.



(CC) BY-SA ©



Public Domain by Alexis Naumann



(CC) MARK © Ltshears

Class: Aves

Order: Accipitriformes

Family: Accipitridae

[Accipiter badius](#) (Gmelin, 1788) . Characteristics: carnivore; body-length: 28-30 cm; grey plumage above; russet barring below; yellow legs and cere. ([Sinclair 1994](#): 86)

- **gebande sperwer** . Categories: *diere, voëls*.



(CC) BY-SA © Ravi Vaidyanathan



(CC) BY-SA © J.M.Garg

[Aquila rapax](#) (Temminck, 1828) . Characteristics: carnivore; body-length: 65-80 cm; variable colouration ranging from dark brown to almost white; pale underside. ([Sinclair 1994](#): 76)

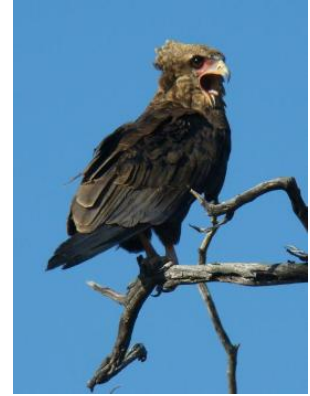
- **roofarend** . Categories: *diere, voëls*.



Public Domain by Taa DoBeS team
(Boden/Güldemann/Naumann)



(CC) BY-SA © Lip Kee



Public Domain by Taa DoBeS team
(Boden/Güldemann/Naumann)

Gyps africanus Salvadori, 1865 . Characteristics: nivore; body-length: 110 cm, wedge-shaped tail and long, narrow wings; rust-coloured below and dark above; pale head with black face and 'beard'. Biotope: savanna, woodland. ([Sinclair 1994](#): 70)

- **witruugaasvoël** . Categories: *diere, voëls*.



(CC) BY-SA © unknown



(CC) BY-SA © Mark Robinson

Gyps coprotheres (J. R. Forster, 1798) .

- **kransasvoel** . Categories: *diere, voëls*.



Public Domain by Roland Kiessling



Public Domain by Roland Kiessling

[Haliaeetus vocifer](#) (Daudin, 1800) . Characteristics: carnivore; body-length: 63-73 cm; white head, breast and tail; brown belly and forewings; black wings. Biotope: freshwater, coast. ([Sinclair 1994](#): 72)

- **visarend** . Categories: *diere*, *voëls*.



(CC) BY-SA © Mehmet Karatay



(CC) BY-SA © Mehmet Karatay

[Melierax canorus](#) (Thunberg, 1799) . Characteristics: carnivore; body-length: 54-63 cm; pale grey plumage; white rump; orange bill and legs. Biotope: desert. ([Sinclair 1994](#): 84)

- **bleeksingvalk** . Categories: *diere*, *voëls*.



(CC) BY-SA © Alastair Rae



Public Domain by Dennis Sumrak

[Milvus aegyptius](#) (Gmelin, 1788) .

- **geelbekwou** . Categories: *diere*, *voëls*.



(CC) BY-SA © Chell Hill



Public Domain by Christiaan Kooyman



(CC) BY © Biodiversity Heritage Library

[Milvus migrans](#) (Boddaert, 1783) . Characteristics: carnivore; body-length: 56 cm; long forked tail; dark plumage. ([Sinclair 1994](#): 88)

- **swartwou** . Categories: *diere*, *voëls*.



(CC) BY-SA © Thomas Kraft



(CC) BY-NC © inaturalist



(CC) BY-SA ©

[Terathopius ecaudatus](#) (Daudin, 1800) . Characteristics: carnivore; body-length: 55-70 cm; black, white and chestnut plumage; short tail; long wings; red face. Biotope: semi-desert. ([Sinclair 1994](#): 74)

- **berghaan** . Categories: *diere*, *voëls*.



(CC) BY © Derek Keats



(CC) BY-SA ©



Public Domain by

Family: Sagittariidae

[Sagittarius serpentarius](#) (J. F. Miller, 1779) .

- sekretarisvoël . Categories: *diere*, *voëls*.



Public Domain by Taa DoBeS team
(Boden/Güldemann/Naumann)



(CC) BY-SA ©



Public Domain by Taa DoBeS team
(Boden/Güldemann/Naumann)

Order: Anseriformes

Family: other

[Anatidae](#) .

- eendvoël . Categories: *diere*, *voëls*.



(CC) BY-SA © Casliber



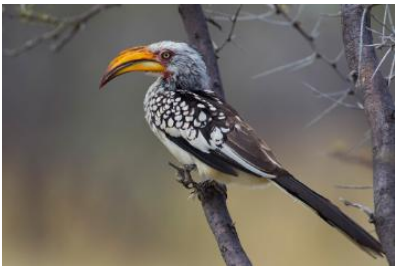
(CC) BY-SA © Karrackoo

Order: Bucerotiformes

Family: Bucerotidae

[Tockus leucomelas](#) (Lichtenstein, 1842) .

- **geelbekneushoringvoël** . Categories: *diere*, *voëls*.



(CC) BY-SA ©



(CC) BY-SA ©



(CC) MARK © Creator:Daniel Giraud Elliot

[Tockus nasutus](#) (Linnaeus, 1766) .

- **grysneushoringvoël** . Categories: *diere*, *voëls*.



(CC) BY-NC © inaturalist



(CC) BY-SA © Lip Kee from Singapore, Republic of Singapore



(CC) BY © Biodiversity Heritage Library

Order: Charadriiformes

Family: Burhinidae

[Burhinus capensis](#) (Lichtenstein, 1823) .

- gewone dikkop . Categories: *diere*, *voëls*.



(CC) BY-SA © Jutta ? unknown



(CC) BY-SA © Cburnett?



(CC) BY © Jeff Heath and the Dogon and Bangime Languages Project

Family: Charadriidae

[Vanellus coronatus](#) (Boddaert, 1783) .

- kroonkiewiet . Categories: *diere*, *voëls*.



(CC) BY-SA ©



(CC) BY-SA ©



(CC) BY-SA ©

Family: Glareolidae

[Rhinoptilus chalcopterus](#) (Temminck, 1824) .

- bronsvlerkdrawwertjie . Categories: *diere*, *voëls*.



Public Domain by Nicolas Huet



(CC) BY-NC-SA © Bart Wursten

Order: Ciconiiformes

Family: Ciconiidae

[Ciconia abdimii](#) Lichtenstein, 1823 . Characteristics: carnivore; body-length: 76 cm; black plumage; white lower back and rump; greenish bill and legs;. ([Sinclair 1994](#): 58)

- **kleinswartooievaar** . Categories: *diere, voëls*.
- **blouwangooievaar** . Categories: *diere, voëls*.



Public Domain by Taa DoBeS team
(Boden/Güldemann/Naumann)



Public Domain by Taa DoBeS team
(Boden/Güldemann/Naumann)



Public Domain by Taa DoBeS team
(Boden/Güldemann/Naumann)

[Leptoptilos crumeniferus](#) (Lesson, 1831) . Characteristics: carnivore; body-length: 150 cm; white body, black wings; naked head and neck; large, pointy bill; whitish legs. ([Sinclair 1994](#): 58)

- **maraboe** . Categories: *diere, voëls*.



(CC) BY-SA © Ltshears



(CC) BY-SA © unknown (User:Cacophony)

Order: Columbiformes

Family: Columbidae

[Oena capensis](#) (Linnaeus, 1766) .

- **namakwaduif** . Categories: *diere*, *voëls*.



(CC) BY-SA © Lip Kee from Singapore, Republic of Singapore



(CC) BY-NC-SA © David Blank



http://en.wikipedia.org/wiki/public_domain © C. G. Finch-Davies (1875-1920)

[Streptopelia capicola](#) (Sundevall, 1857) .

- **tortelduif** . Categories: *diere*, *voëls*.



(CC) BY-SA ©



(CC) BY-SA ©



(CC) BY-SA ©

[Streptopelia senegalensis](#) (Linnaeus, 1766) .

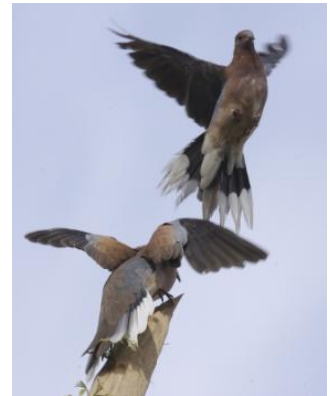
- **rooiborsduifie** . Categories: *diere, voëls.*
- **lemoenduifie** . Categories: *diere, voëls.*



(CC) BY-SA ©



(CC) BY-SA © Lip Kee



(CC) BY-SA ©

Order: Coraciiformes

Family: Coraciidae

[Coracias caudatus](#) Linnaeus, 1766 .

- **gewone trou pant** . Categories: *diere, voëls.*



Public Domain by Taa DoBeS team
(Boden/Güldemann/Naumann)



(CC) BY-SA © Mosmas ?

Coracias garrulus Linnaeus, 1758 .

- **Europese trou pant** . Categories: *diere*, *voëls*.



(CC) BY-SA © Christian Svane



Public Domain by John Gould

Coracias naevia .

- **groottrou pant** . Categories: *diere*, *voëls*.



(CC) BY-SA © Yoky ?



(CC) BY-SA © Renier Maritz

Family: Meropidae

[Merops hirundineus](#) A. A. H. Lichtenstein, 1793 .

- swaelsterbyvreter . Categories: *diere*, *voëls*.



(CC) BY-SA © unknown



Public Domain by Claude Gibney Finch-Davies

Order: Cuculiformes

Family: Cuculidae

[Chrysococcyx caprius](#) (Boddaert, 1783) .

- diederikkie . Categories: *diere*, *voëls*.



(CC) BY-SA © Tom Tarrant



(CC) BY-SA © Alastair Rae

[Clamator glandarius](#) (Linnaeus, 1758) .

- gevlekte koekoek . Categories: *diere*, *voëls*.



(CC) BY-SA © Eran Finkle



(CC) BY-SA © Eran Finkle

[*Cuculus clamosus*](#) Latham, 1802 .

- **swartkoekoek** . Categories: *diere*, *voëls*.



(CC) BY-SA © Alan Manson



PD US ©

Order: Falconiformes

Family: Falconidae

[*Falco biarmicus*](#) Temminck, 1825 . Characteristics: carnivore; body-length: 40-45 cm, rufous and black head and crown; pinkish underside; dark back. Biotope: grassland, desert, mountains. ([Sinclair 1994](#): 88)

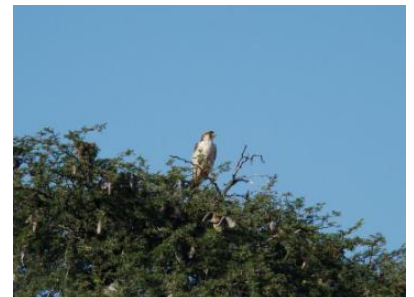
- **edelvalk** . Categories: *diere*, *voëls*.



Public Domain by Taa DoBeS team
(Boden/Güldemann/Naumann)



(CC) MARK © creator:Louis Agassiz Fuertes



Public Domain by Taa DoBeS team
(Boden/Güldemann/Naumann)

Order: Galliformes

Family: Numididae

[*Numida meleagris*](#) (Linnaeus, 1758) . Characteristics: omnivore; body-length: 56 cm; grey plumage with white dots; blue and red skin on the head. Biotope: grassland, woodland. ([Sinclair 1994](#): 102)

- **tarentaal** . "guinea-fowl". Categories: *diere*, *voëls*.

- **drafhoender** . "guinea-fowl". Categories: *diere*, *voëls*.
- **wildehoender** . "guinea-fowl". Categories: *diere*, *voëls*.
- **poelpetaat, poelpetater** . "guinea-fowl". Categories: *diere*, *voëls*.



(CC) BY-SA ©



(CC) BY © Jeff Heath and the Dogon and Bangime Languages Project



(CC) BY © Chris Eason

Family: Phasianidae

[Francolinus adspersus](#) Waterhouse, 1838 . Characteristics: omnivore; body-length: 35-38 cm; dark brown plumage without streaks or blotches; red bill; yellow skin around the eyes . Biotope: grassland, woodland. (**[Sinclair 1994](#)**: 94)

- **rooibekfisant** . Categories: *diere*, *voëls*.



(CC) BY-SA © Hans Hillewaert

Order: Gruiformes

Family: Otididae

[Ardeotis kori](#) (Burchell, 1822) .

- **gompou** . Categories: *diere*, *voëls*.



Public Domain by Taa DoBeS team
(Boden/Güldemann/Naumann)



Public Domain by Taa DoBeS team
(Boden/Güldemann/Naumann)

[Eupodotis afra](#) (Linnaeus, 1758) .

- **swartkorhaan** . Categories: *diere*, *voëls*.



(CC) BY-SA © Susann Eurich



(CC) BY-SA © Andrew Massyn

[Eupodotis ruficrista](#) (A. Smith, 1836) .

- **boskorhaan** . Categories: *diere*, *voëls*.



(CC) BY-SA © Frederic Salein



(CC) BY-SA © Chris Eason

Order: Passeriformes

Family: Cisticolidae

[Cisticola aridulus](#) Witherby, 1900 .

- **woestynklopkloppie** . Categories: *diere, voëls*.



(CC) BY-SA © Lip Kee Yap

Family: Corvidae

[Corvus albicollis](#) Latham, 1790 .

- **withalskraai** . Categories: *diere, voëls*.



(CC) BY-SA © unknown (Yoky)



(CC) BY-SA © Masa Sakano

[Corvus albus](#) Statius Muller, 1776 .

- **witborskraai** . Categories: *diere, voëls*.



(CC) BY-SA © Thomas Schoch



(CC) BY-SA © Myburgh

[*Corvus capensis*](#) Lichtenstein, 1823 .

- **swartkraai** . Categories: *diere, voëls*.



Public Domain by Taa DoBeS team
(Boden/Güldemann/Naumann)



Public Domain by Taa DoBeS team
(Boden/Güldemann/Naumann)

Family: Dicruridae

[*Dicrurus adsimilis*](#) (Bechstein, 1794) .

- **mikstertbyvanger** . Categories: *diere, voëls*.



Public Domain by Taa DoBeS team
(Boden/Güldemann/Naumann)



Public Domain by Taa DoBeS team
(Boden/Güldemann/Naumann)

Family: Estrildidae

[*Amadina erythrocephala*](#) (Linnaeus, 1758) .

- **rooikopvink** . Categories: *diere, voëls*.



(CC) BY-SA © Hans Hillewaert



(CC) BY-SA © unknown

[Uraeginthus granatinus](#) (Linnaeus, 1766) .

- **koningsblousysie** . Categories: *diere, voëls.*



(CC) BY-NC-SA © Picasa



(CC) BY-SA ©



(CC) BY-SA © Alastair Rae

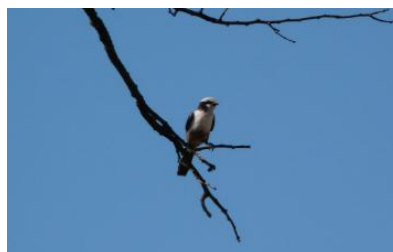
Family: Laniidae

[Eurocephalus anguitemens](#) A. Smith, 1836 .

- **kremetartlaksman** . Categories: *diere, voëls.*



(CC) BY-SA © Alastair Rae



(CC) BY © Simon J. Tonge

[*Lanius minor*](#) Gmelin, 1788 .

- **gryslaksman** . Categories: *diere*, *voëls*.



Public Domain by Taa DoBeS team
(Boden/Güldemann/Naumann)



Public Domain by Taa DoBeS team
(Boden/Güldemann/Naumann)

Family: Malaconotidae

[*Laniarius atrococcineus*](#) (Burchell, 1822) .

- **rooiborslaksman** . Categories: *diere*, *voëls*.



(CC) BY-SA © Claude Gibney Finch-Davies



(CC) BY-SA © Hans Hillewaert

Family: Muscicapidae

[*Erythropygia paena*](#) A. Smith, 1836 .

- **kalahariwipstert** . Categories: *diere*, *voëls*.



(CC) BY-SA © Alastair Rae

Family: Nectariniidae

[Nectarinia mariquensis](#) A. Smith, 1836 .

- **maricosuikerbekkie** . Categories: *diere, voëls*.



(CC) BY-SA © Tom Tarrant



(CC) BY-SA © Hans Hillewaert

Family: Passeridae

[Philetairus socius](#) (Latham, 1790) .

- **versamelvoël** . Categories: *diere, voëls*.
- **familievoël** . Categories: *diere, voëls*.



(CC) BY-SA © Andy.Cowley



Public Domain by Taa DoBeS team
(Boden/Güldemann/Naumann)



(CC) MARK © Alfred Brehm, text. Image - Gustav Mützel (December 7, 1839 – October 29, 1893)

Plocepasser mahali A. Smith, 1836 .

- **koringvoël** . Categories: *diere*, *voëls*.



Public Domain by Taa DoBeS team
(Boden/Güldemann/Naumann)



(CC) BY-NC-SA © Gerald and Buff Corsi



(CC) MARK © creator:Andrew Smith

Family: Ploceidae

Euplectes progne (Boddaert, 1783) .

- **langstertflap** . Categories: *diere*, *voëls*.



(CC) BY-SA © Jayanth Sharma



(CC) BY-SA © NJR ZA

[Ploceus velatus](#) Vieillot, 1819 .

- **swartkeelgeelvink** . Categories: *diere, voëls*.



(CC) BY © Simon J. Tonge



(CC) BY © Chris Eason



(CC) BY-SA ©

[Sporopipes squamifrons](#) (A. Smith, 1836) .

- **baardmannetjie** . Categories: *diere, voëls*.



(CC) BY-SA ©



Public Domain by



(CC) BY-SA ©

Family: Pycnonotidae

[Pycnonotus barbatus](#) (Desfontaines, 1789) .

- **swartoogtiptol** . Categories: *diere, voëls*.



(CC) BY © Valentina



(CC) BY-SA © Lip Kee Yap



Author died more than 70 years ago public domain

images ©

Family: Sturnidae

[*Creatophora cinerea*](#) (Meuschen, 1787) .

- **lelspreeu** . Categories: *diere, voëls*.



(CC) BY-SA © Doug Janson

[*Lamprotornis nitens*](#) (Linnaeus, 1766) .

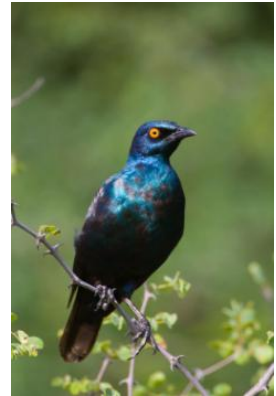
- **kleinglansspreeu** . Categories: *diere, voëls*.



Public Domain by Taa DoBeS team
(Boden/Güldemann/Naumann)



Public Domain by Taa DoBeS team
(Boden/Güldemann/Naumann)



(CC) BY-NC © inaturalist

Family: Sylviidae

[Turdoides bicolor](#) (Jardine, 1831) .

- **katlagter** . "babbler". Categories: *diere*, *voëls*.



(CC) BY ©



(CC) BY-SA ©



(CC) BY-SA ©

Family: Turdidae

[Monticola rupestris](#) (Vieillot, 1818) .

- **berglyster** . Categories: *diere*, *voëls*.



(CC) BY ©



(CC) BY-SA © Alan Manson



(CC) BY ©

[Psophocichla litsitsirupa](#) (A. Smith, 1836) .

- **gevlekte lyster** . Categories: *diere, voëls*.



(CC) BY © Derek Keats



(CC) BY-SA © Alastair Rae



(CC) BY © Flickr

Family: Viduidae

[Vidua macroura](#) (Pallas, 1764) .

- **koningweeduweetjie** . Categories: *diere, voëls*.



(CC) BY-SA © Anonymous



(CC) BY-NC © Flickr



(CC) BY-NC © Mike Comber

[Vidua regia](#) (Linnaeus, 1766) .

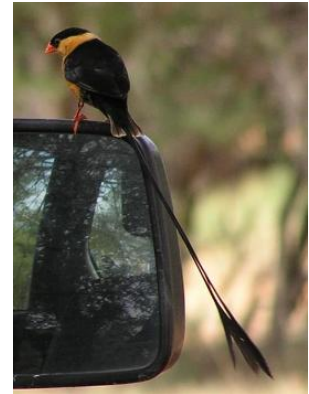
- **pylstertrooibekkie** . Categories: *diere, voëls*.
- **pylstertweeduweetjie** . Categories: *diere, voëls*.



(CC) BY © Simon J. Tonge



(CC) BY-SA ©



Public Domain by Christfried Naumann

Order: Pelecaniformes

Family: Ardeidae

Bubulcus ibis (Linnaeus, 1758) . Characteristics: carnivore; body-length: 54 cm; white and light brown plumage; yellow bill; breeding bird has a red bill; often found in association with cattle. Biotope: grassland. ([Sinclair 1994](#): 54)

- **veereier** . Categories: *diere, voëls*.



(CC) BY-SA © Atamari



(CC) BY-SA © Atamari



(CC) BY © Jeff Heath and the Dogon and Bangime Languages Project

Family: Scopidae

Scopus umbretta Gmelin, 1789 . Characteristics: carnivore; body-length: 56 cm; dark brown plumage; long legs; hammer-shaped profile of the head; long dark bill. Biotope: freshwater. ([Sinclair 1994](#): 60)

- **hamerkop** . Categories: *diere, voëls*.



(CC) BY-SA © Derek Ramsey



(CC) BY-SA © Sebastian Ritter



(CC) BY-SA ©

Order: Piciformes

Family: Ramphastidae

[Trachyphonus vaillantii](#) Ranzani, 1821 .

- **kuifkophoutkapper** . Categories: *diere*, *voëls*.



(CC) BY-SA © Joachim Huber



(CC) BY-SA © Chris Eason



(CC) BY-SA ©

Order: Strigiformes

Family: Strigidae

[Bubo africanus](#) (Temminck, 1821) .

- **gevlekte ooruil** . Categories: *diere*, *voëls*.



Public Domain by Taa DoBeS team
(Boden/Güldemann/Naumann)

[Bubo lacteus](#) (Temminck, 1820) .

- **reuse ooruil** . Categories: *diere, voëls*.



Public Domain by Taa DoBeS team
(Boden/Güldemann/Naumann)



Public Domain by Taa DoBeS team
(Boden/Güldemann/Naumann)



Public Domain by Taa DoBeS team
(Boden/Güldemann/Naumann)

[Glaucidium perlatum](#) (Vieillot, 1817) .

- **witkoluil** . Categories: *diere, voëls*.



(CC) BY-SA © Derek Ramsey



(CC) BY-SA © ChriKo ?

[Otus leucotis](#) (Temminck, 1820) .

- **witwanguil** . Categories: *diere, voëls*.



Public Domain by Adrian Pingstone

Family: Tytonidae

[Tyto alba](#) (Scopoli, 1769) .

- **nonnetjie-uil** . Categories: *diere, voëls*.



(CC) BY-SA ©



Public Domain by Racheeo ??



(CC) BY-SA ©

[Tyto capensis](#) (A. Smith, 1834) .

- **grasuil** . Categories: *diere, voëls*.



Public Domain by Hayleyk



(CC) BY-NC-SA © EOL China Regional Center



(CC) MARK © John Gould, HC Richter

Order: Struthioniformes

Family: Struthionidae

[Struthio camelus](#) Linnaeus, 1758 .

- **volstruis** . Categories: *diere*, *voëls*.



Public Domain by Taa DoBeS team
(Boden/Güldemann/Naumann)



Public Domain by Taa DoBeS team
(Boden/Güldemann/Naumann)



Public Domain by Roland Kiessling

Order: Upupiformes

Family: Phoeniculidae

[Phoeniculus cyanomelas](#) .

- **swartbekkelaar** . Categories: *diere*, *voëls*.



(CC) BY-SA ©



(CC) BY-SA ©



Public Domain by Taa DoBeS team
(Boden/Güldemann/Naumann)

Family: Upupidae

[Upupa epops](#) Linnaeus, 1758 .

- **hoephoep** . Categories: *diere*, *voëls*.



(CC) BY-SA ©



(CC) BY-SA ©



(CC) BY © Biodiversity Heritage Library

Class: Mammalia

Order: Afrosoricida

Family: Chrysochloridae

[Amblysomus hottentotus](#) (A. Smith, 1829) . Characteristics: carnivore; body-length: 11-15 cm; these barrel shaped moles have a smooth dark brown to reddish fur; the eyes are covered in skin and are completely blind; the openings of the ears are covered with fur and not visible; the short, strong limbs are ideal for digging;. Biotope: savanna, forest, grassland. (Cillié 1997: 206)

- **Hottentot gouemol** . Categories: *diere, soogdiere*.

Order: Artiodactyla

Family: Bovidae

[Aepyceros melampus](#) (Lichtenstein, 1812) . Characteristics: herbivore; height: 90 cm; females lack horns. Biotope: savanna, scrubforest, grassland.

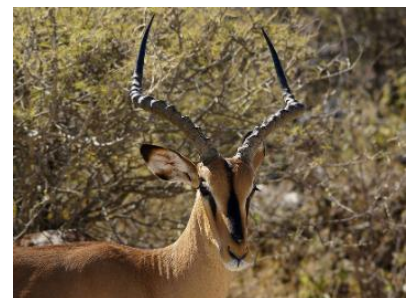
- **rooibok** . Categories: *diere, soogdiere*.
- **impala** . Categories: *diere, soogdiere*.



(CC) BY-SA © Hans Hillewaert



(CC) BY-SA © Hans Hillewaert



(CC) BY-SA © Hans Hillewaert

[Aepyceros melampus melampus](#) (Lichtenstein, 1812) . Characteristics: herbivore; height: 90 cm; reddish-brown back, light brown flanks and white belly; three black stripes on the hindquarters; females are smaller and lack horns. Biotope: savanna, grassland, woodland. ([Cillié 1997](#): 16)

- **rooibok** . Categories: *diere, soogdiere*.

[Aepyceros melampus petersi](#) Bocage, 1879 . Characteristics: herbivore; height: 90 cm, dull brown coat, lighter brown on the flanks and white on the belly; black blaze on the face; females are smaller and lack horns. Biotope: woodland. ([Cillié 1997](#): 18)

- **swartneurooibok** . Categories: *diere, soogdiere*.
- **swartgesigrooibok** . Categories: *diere, soogdiere*.



(CC) BY-SA © Hans Hillewaert



(CC) BY-SA © Yathin S Krishnappa

[Alcelaphus buselaphus](#) (Pallas, 1766) . Characteristics: herbivore; height: 110-150 cm; the coat is glossy red-brown; the outside of the legs and the tail are black; the buttocks are light; there is a black blaze on the face; the snout is very long; the shoulders are humped and the back is sloped; the horns rise from a single pedicel and are S-shaped;. Biotope: savanna, shrubland, grassland, woodland,. ([Cillié 1997](#): 76)

- **rooihartbees** . Categories: *diere, soogdiere*.



(CC) BY-SA © Hans Hillewaert



(CC) BY-SA © Hans Hillewaert



Public Domain by Güldemann/Naumann

Antidorcas marsupialis (Zimmermann, 1780) . Characteristics: herbivore; height: 90 cm; white face with two brown stripes; light brown back, white belly; both sexes have horns. Biotope: savanna, grassland. (Cillié 1997: 20)

- **springbok** . Categories: *diere*, *soogdiere*.



Public Domain by Taa DoBeS team
(Boden/Güldemann/Naumann)



Public Domain by Taa DoBeS team
(Boden/Güldemann/Naumann)



Public Domain by Taa DoBeS team
(Boden/Güldemann/Naumann)

Capra hircus Linnaeus, 1758 .

- **bok** . Categories: *diere*, *soogdiere*.



(CC) BY © Simon J. Tonge



(CC) BY © High Contrast



Public Domain by Christfried Naumann

Cephalophus natalensis A. Smith, 1834 . Characteristics: herbivore; height: 40cm; chestnut to reddish-brown coat with a slightly lighter belly; a tuft of dark hair between the horns; the ears are short and rounded; the tail has a white tip; both sexes have short horn which lie backwards in line with the face;. Biotope: forest, shrubland. (Cillié 1997: 66)

- **rooiduiker** . Categories: *diere*, *soogdiere*.



Public Domain by Nachbarnebenan

Connochaetes gnou (Zimmermann, 1780) . Characteristics: herbivore; height: 100-120 cm; the coat is dark brown; the white tail is long and horse-like; they have a straight, light brown mane; the face is dark and has hair on the nose and a beard; both sexes have horns that curl forward;. Biotope: savanna, scrubforest, grassland. ([Cillié 1997](#): 80)

- **swartwildebees** . Categories: *diere, soogdiere*.



Public Domain by Vassil



Public Domain by Vassil



Public Domain by Gustav Mützel

Connochaetes taurinus (Burchell, 1823) . Characteristics: herbivore; height: 115-145 cm; the coat is dark grey-brown with vertical darker stripes on the neck and flanks; the mane, face, beard and long tail are black; both sexes have horns that curve sideways; the males are considerably larger than the females. Biotope: savanna, grassland, woodland. ([Cillié 1997](#): 82)

- **blouwildebees** . Categories: *diere, soogdiere*.



Public Domain by Taa DoBeS team
(Boden/Güldemann/Naumann)



Public Domain by Taa DoBeS team
(Boden/Güldemann/Naumann)



Public Domain by Taa DoBeS team
(Boden/Güldemann/Naumann)

Damaliscus lunatus (Burchell, 1823) . Characteristics: herbivore; height: 100-150cm; the coat is dark reddish-brown; they have a dark blaze on the face; also the upper parts of the legs are black; they have a hump on the shoulders and the back slopes downwards: both sexes have horns; the horns are ringed and S-shaped;. Biotope: savanna, scrubforest, grassland. ([Cillié 1997](#): 74)

- **tsessebe** . Categories: *diere, soogdiere*.
- **basterhartbees** . Categories: *diere, soogdiere*.



(CC) BY-SA © Paulmaz



(CC) BY-SA © Daniel Fafard (Dreamdan)

[Damaliscus pygargus phillipsi](#) Harper, 1939 . Characteristics: herbivore; height: 85-100cm; the neck and top of the back are brown; the flanks and buttocks are darker; the belly and part of the legs are white; the face is brown with a small blaze above the eyes and a big blaze on the snout; the ears are white and pointy; the tail is black and bushy; both sexes have horns; it differs from the Bontebok by the blazes on the face being seperated;. Biotope: grassland. ([Cillié 1997](#): 70)

- **blesbok** . Categories: *diere, soogdiere*.



Public Domain by Christfried Naumann

[Hippotragus equinus](#) (É. Geoffroy Saint-Hilaire, 1803) . Characteristics: herbivore; height: 135 cm, the coat is reddish-brown and has an erect mane, the belly is lighter brown and the tail is dark brown to black, the face is black with white patches in front of the eyes and a white mouth, both sexes have horns which curve backwards, females are slightly smaller. Biotope: savanna, grassland, woodland. ([Cillié 1997](#): 34)

- **bastergemsbok** . Categories: *diere, soogdiere*.



(CC) BY-SA © Micha L. Rieser



(CC) MARK © Dave Pape



(CC) BY © Flickr

Hippotragus niger (Harris, 1838) . Characteristics: herbivore; height: 135 cm; the coat is dark brown on the back and white on the belly and buttocks; the face is white with three vertical black stripes; both sexes have horns which curve backwards; the female is slightly smaller than the male. Biotope: savanna, grassland, woodland. ([Cillié 1997](#): 36)

- **swartwitpens** . Categories: *diere*, *soogdiere*.



(CC) BY-SA © Dezidor



Public Domain by Unknown

Kobus ellipsiprymnus (Ogilby, 1833) . ([Cillié 1997](#): 38)

- **waterbok** . Categories: *diere*, *soogdiere*.



(CC) BY-NC © inaturalist



Public Domain by



Public Domain by Christfried Naumann

Kobus leche Gray, 1850 . Characteristics: herbivore; height: 95cm; the shoulders are lower than the crop, causing the body to slope forward; the coat is reddish-brown on the back, lighter lower on the body and white on the belly; the legs are brown, the front legs have characteristic vertical black stripes; males are bigger than females and have horns;. Biotope: flooded grassland, woodland. ([Cillié 1997](#): 40)

- **rooilechwe** . Categories: *diere, soogdiere*.



Public Domain by Reinhard Kraasch



Public Domain by Ian Restall

Kobus vardonii (Livingstone, 1857) . Characteristics: herbivore; height: 80cm; the coat is golden brown, becoming lighter on the belly and darker on the face; white areas around the eyes and the mouth; the Puku can be distinguished from the Lechwe by the smaller size, the straight back and the absence of the black stripes on the front legs,. Biotope: savanna, grassland. ([Cillié 1997](#): 42)

- **poekoe** . Categories: *diere, soogdiere*.



(CC) BY © Simon J. Tonge



(CC) BY-SA © Hans Hillewaert

Madoqua kirkii (Günther, 1880) . Characteristics: herbivore; height: 50-17cm; the coat is grey-brown with fine speckles on the back and buttocks, while the neck and flanks are lighter brown; the belly and the area around the eyes are nearly white; on the forehead is a long tuft of hair, which can be raised; the upper lip is longer than the lower lip; males have short horns that slope backwards;. Biotope: scrubforest, grassland, woodland. ([Cillié 1997](#): 62)

- **damara dik-dik** . Categories: *diere, soogdiere*.



(CC) BY-SA © Amrum

Neotragus moschatus (Von Dueben, 1846) . Characteristics: herbivore; height: 30-40 cm; light brown to reddish-brown coat with white speckles on the back; the belly and insides of the legs are white; the tail is long and dark with white margins, it is white underneath; the upper lip is longer than the lower lip; the males are smaller and have straight horns that slope backwards in line with the face;. Biotope: montane forest, riparian shrubland. ([Cillié 1997](#): 60)

- **soenie** . Categories: *diere*, *soogdiere*.



(CC) BY-SA © Olivier Lejade



(CC) BY-SA © Olivier Lejade from France



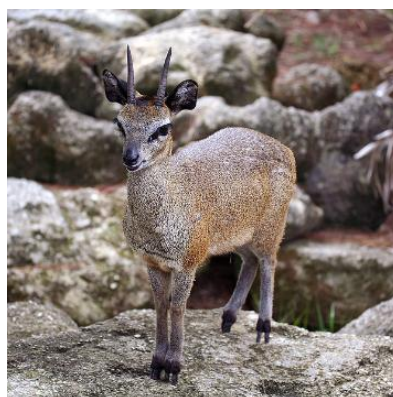
(CC) BY-NC-SA © David Bygott

Oreotragus oreotragus (Zimmermann, 1783) . Characteristics: herbivore; height: 60 cm; thick yellow to grey-brown coat with white belly; large tear-shaped markings in front of the eyes; males are smaller than females and have short (8 cm), erect horns; the klipspringer is stouter than the duiker which also lacks the tear marks;. Biotope: rocky area, mountains. ([Cillié 1997](#): 50)

- **klipspringer** . Categories: *diere*, *soogdiere*.



(CC) BY-SA © Mirella Riesch / Christoph Aeschlimann



(CC) BY-SA © Munificent



(CC) MARK © Wikimedia Commons

Oryx gazella (Linnaeus, 1758) . Characteristics: herbivore; height: 120 cm; the coat is light brown to ash grey with a black stripe along the flanks and on the back; white face with black patches on the snout and high on the forehead; both sexes have long straight horns; females are slightly smaller than males,. Biotope: savanna, grassland, semi-arid desert. (Cillié 1997: 32)

- **gemsbok** . Categories: *diere*, *soogdiere*.



Public Domain by Güldemann/Naumann



Public Domain by Taa DoBeS team
(Boden/Güldemann/Naumann)



Public Domain by Taa DoBeS team
(Boden/Güldemann/Naumann)

Ourebia ourebi (Zimmermann, 1783) . Characteristics: herbivore; height: 55 cm; light rusty-brown coat with white belly and throat; the tail is black on top and white underneath; white patches are found around the eyes and the mouth; the males are slightly smaller than the females and have short (10 cm) horns that curve slightly forward at the tips. Biotope: savanna, scrubforest, grassland. (Cillié 1997: 52)

- **oorbietjie** . Categories: *diere*, *soogdiere*.



PD US FWS ©



(CC) BY-SA © Roland Hunziker
<http://www.flickr.com/photos/rolandh/>

Ovis aries Linnaeus, 1758 .

- **skaap** . Categories: *diere*, *soogdiere*.



(CC) BY-SA ©



(CC) BY-SA © Jörg Hempel



(CC) BY © Simon J. Tonge

[*Pelea capreolus*](#) (Forster, 1790) . Characteristics: herbivore; height: 100 cm; brown, woolly coat; the belly and the underparts of the tail are white; long and pointy ears; the males are bigger than the females and have straight horns; the grey rhebok can be distinguished from the mountain reebok by the straight horns and the lack of the black spots below the ears;. Biotope: grassland, mountains. ([Cillié 1997](#): 48)

- **vaalribbok** . Categories: *diere, soogdiere*.



(CC) BY-SA © unknown (en>User:Cburnett)



Public Domain by



Public Domain by

[*Philantomba monticola*](#) (Thunberg, 1789) . Characteristics: herbivore; height: 35 cm; the coat is dark grey-brown on the back while the belly, chest and throat are light brown; underneath each eye is a horizontal black stripe; both sexes have short horns that lie back in line with the face; males are slightly smaller than females;. Biotope: forest, rainforest. ([Cillié 1997](#): 68)

- **blouduiker** . Categories: *diere, soogdiere*.



(CC) BY-SA © Derek Keats



(CC) BY © Jean



(CC) MARK © Philip Sclater

[Raphicerus campestris](#) (Thunberg, 1811) . Characteristics: herbivore; height: 55cm; light brown to brick brown coat, the belly and the insides of the legs are white; the males are smaller than the females and have short (9 cm), straight and very sharp horns; the steenbok differs from the Oribi by the brown tail,. Biotope: savanna, grassland, woodland, semi-arid desert. ([Cillié 1997](#): 54)

- **steenbok** . Categories: *diere, soogdiere*.



(CC) BY-SA ©



(CC) BY-SA ©



Public Domain by

[Raphicerus melanotis](#) (Thunberg, 1811) . Characteristics: herbivore; height: 50cm; the coat is dark, reddish brown with white speckles; the belly and insides of the legs are light brown; the ears are long and pointed; the males have short (8 cm) straight horns; it can be distinguished from the steenbok by the white speckles and the habitat;. Biotope: savanna, shrubland, grassland. ([Cillié 1997](#): 56)

- **kaapse grysbok** . Categories: *diere, soogdiere*.



Public Domain by Philip Sclater



(CC) BY-SA © Jimbleak

[Raphicerus sharpei](#) Thomas, 1897 . Characteristics: herbivore; height: 45-60cm; the coat is light brown; the belly and insides of the legs are white; the ears are large and have rounded tips; the male has very short (6 cm) erect horns and is slightly smaller than the female; it is lighter in colour than the grey grysbok. Biotope: savanna, forest, grassland. ([Cillie 1997](#): 58)

- **tropiese grysbok** . Categories: *diere*, *soogdiere*.



(CC) BY-NC-SA © Bernard DUPONT



(CC) BY-SA ©



(CC) BY-NC-SA © Bernard DUPONT

[Redunca arundinum](#) (Boddaert, 1785) . Characteristics: herbivore; height: 85cm, the coat is yellowish brown on the back and white on the belly, the forelegs are dark brown in front, the tail is bushy and white underneath, males are larger and have horns, the southern reedbuck can be distinguished from the Impala by the lack of the three black stripes on the hindquarters and the less red colour, and from the mountain reedbuck by its bigger size and the habitat. Biotope: savanna, marshland, grassland. ([Cillie 1997](#): 44)

- **rietbok** . Categories: *diere*, *soogdiere*.



(CC) BY © Jack Versloot



(CC) BY-SA © Winfried Bruenken



Public Domain by

[Redunca fulvorufula](#) (Afzelius, 1815) . Characteristics: herbivore; height: 75cm, the coat is made of long, grey hair, the belly is white, the tail is bushy and white underneath, below the ears are characteristic black spots, the ears are rounded with a white fringe, the males are larger than the females and have short (14 cm) horns, the mountain reedbuck differs from the grey rhebok by its shorter, thicker neck and the rounded ears. Biotope: savanna, scrubforest, grassland, mountains. ([Cillié 1997](#): 46)

- **rooiribbok** . Categories: *diere, soogdiere*.



(CC) BY-SA © unknown



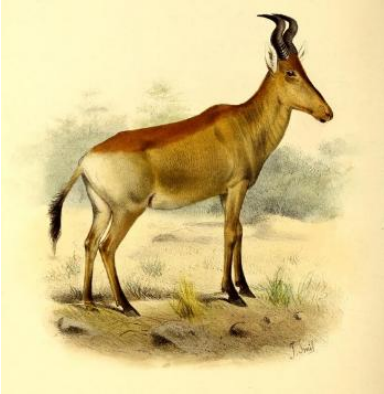
(CC) BY-NC-SA © David Bygott



(CC) MARK © Philip Sclater

[Sigmoceros lichtensteinii](#) (Peters, 1849) . Characteristics: herbivore; height: 125 cm; the coat is chestnut or yellow-brown; the buttocks are a lighter colour; the tail and the shins are black; the shoulders are humped; both sexes have horns that rise on a single pedicel; it can be distinguished from the Red Hartebeest by the lack of black blazes;. Biotope: savanna. ([Cillié 1997](#): 78)

- **mofhartbees** . Categories: *diere, soogdiere*.



Public Domain by Philip Sclater



(CC) BY-SA © Paul Maritz

Sylvicapra grimmia (Linnaeus, 1758) . Characteristics: herbivore; height: 50cm; the coat varies in colour from light grey-brown to red-brown; the belly and the insides of the legs are white; the front legs have vertical black stripes; there is a tuft of long, black hair on the forehead; the short tail is dark on top and white underneath; females are larger and lack horns;. Biotope: savanna, grassland, woodland, mountains. ([Cillié 1997](#): 64)

- **gewone duiker** . Categories: *diere, soogdiere*.
- **duiker** . Categories: *diere, soogdiere*.



Public Domain by unknown (Chuckupd)



(CC) BY-NC-SA © Bernard DUPONT



(CC) BY © Biodiversity Heritage Library

Syncerus caffer (Sparrman, 1779) . Characteristics: herbivore; height: 1-1,7m; this cattle-like animal is born with a light reddish-brown coat that darkens with age until it is grey-black; both sexes are horned, but the horns of the male are especially large with thick bosses;. Biotope: savanna, scrubforest, forest, grassland. ([Cillié 1997](#): 84)

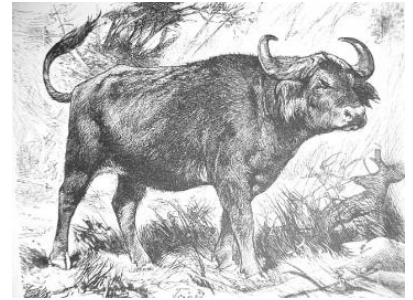
- **buffel** . Categories: *diere, soogdiere*.



(CC) BY-SA © unknown, Haplochromis?



(CC) BY © Stig Nygaard



(CC) MARK © Wikimedia Commons

[Taurotragus oryx](#) (Pallas, 1766) .

- **eland** . Categories: *diere*, *soogdiere*.



Public Domain by Christfried Naumann



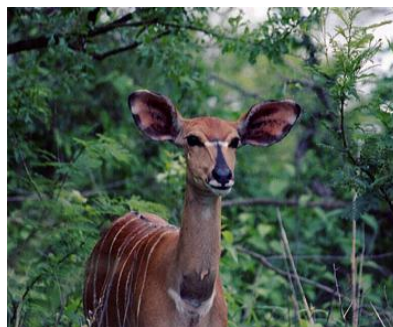
(CC) BY-SA ©

[Tragelaphus angasii](#) Angas, 1849 . Characteristics: herbivore; height: 110 cm, white vertical stripes on the back, yellow stockinged legs, males are dark blue-grey in colour and have a white chevron mark between the eyes and horns, females are reddish-brown, they lack the chevron mark and horns. Biotope: savanna, forest, shrubland, grassland, woodland, freshwater. ([Cillié 1997](#): 24)

- **njala** . Categories: *diere*, *soogdiere*.



(CC) BY © Derek Keats from Johannesburg, South Africa



(CC) BY-SA © Original uploader was Chrigu888 at de.wikipedia



(CC) MARK © G.F.Angas (sketch), R.W.Fawkins (lithography)

[Tragelaphus scriptus](#) (Pallas, 1766) . Characteristics: herbivore; height: 75-110 cm, white spots on the legs and flanks, females are smaller, lighter in colour and lack horns. Biotope: savanna, forest, shrubland, grassland, woodland, freshwater. ([Cillié 1997](#): 22)

- **bosbok** . Categories: *diere, soogdiere*.



(CC) BY-SA © Chiswick Chap



(CC) BY-SA © D. Gordon E. Robertson



(CC) MARK © Rüppell, Eduard, 1794-1884

[Tragelaphus spekeii](#) . Characteristics: herbivore; height: 100 cm, long, grey-brown coat, white spots and stripes on the flanks and the back, white patch on the throat, males have horns and are bigger and darker than females. Biotope: savanna, marshland, swamps. ([Cillié 1997](#): 26)

- **sitatunga** . Categories: *diere, soogdiere*.



Public Domain by Karel Jakubec

[Tragelaphus strepsiceros](#) (Pallas, 1766) . Characteristics: herbivore; height: 140 cm, pale-grey to brownish- grey coat, white, vertical stripes on the flanks, white chevron mark between the eyes, hump on the shoulders, males have twisted horns,. Biotope: savanna, forest, shrubland, grassland. ([Cillié 1997](#): 28)

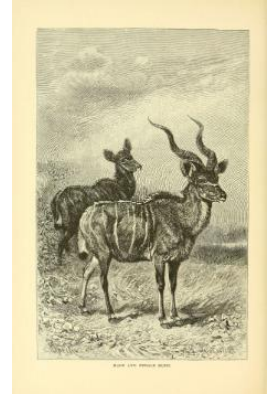
- **koedoe** . Categories: *diere, soogdiere*.



(CC) BY-SA ©



(CC) BY-SA ©



(CC) BY © Biodiversity Heritage Library

Family: Giraffidae

Giraffa camelopardalis (Linnaeus, 1758) . Characteristics: herbivore; characteristic are the long legs and the very long neck; the whitish-yellow body is covered with brown patches that get darker as the animal ages; on top of the head are two short horns that are covered with black hair; they have a mane of short, stiff hair;. Biotope: savanna, scrubforest, grassland, woodland. (Cillié 1997: 96)

- **kameelperd** . Categories: *diere, soogdiere*.



Public Domain by Taa DoBeS team
(Boden/Güldemann/Naumann)



Public Domain by Taa DoBeS team
(Boden/Güldemann/Naumann)



Public Domain by Taa DoBeS team
(Boden/Güldemann/Naumann)

Family: Hippopotamidae

Hippopotamus amphibius Linnaeus, 1758 . Characteristics: herbivore; height: 150-165 cm; this very large semiaquatic animal is generally grey-brown but the belly and skinfolds are yellowish-pink; it has a very large mouth; the nostrils and the eyes are on top of the head; the ears are small and rounded;. Biotope: freshwater, swamps. (Cillié 1997: 106)

- **seekoei** . Categories: *diere, soogdiere*.



Public Domain by Christfried Naumann



© Geoff Gallice

Family: Suidae

[Phacochoerus aethiopicus](#) (Pallas, 1766) .

- **vlakvark** . Categories: *diere*, *soogdiere*.



(CC) BY © Simon J. Tonge



(CC) BY-NC © inaturalist



(CC) MARK © Frank E. Beddard

[Phacochoerus africanus](#) (Gmelin, 1788) . Characteristics: omnivore; the body is grey and sparsely covered with long bristles; there is a mane of dark hair with lighter tips; the adults have large tusks which curve over the broad snout; the males have larger tusks than the females and have three pairs of warts on the sides of the face; they run with their tail up;. Biotope: savanna, grassland, desert. ([Cillié 1997](#): 92)

- **vlakvark** . Categories: *diere*, *soogdiere*.



© Geoff Gallice



(CC) BY-SA © Delphine Bruyere



(CC) PUBLICDOMAIN © Trisha M Shears

Potamochoerus larvatus (F. Cuvier, 1822) . Characteristics: omnivore; height: 60-100 cm; very hairy, grey-brown body; the mane and the upper parts of the face are lighter in colour; the snout is blunt and muscular; the tusks are small but very sharp;. Biotope: forest, shrubland, woodland, swamps. ([Cillié 1997](#): 94)

- **bosvark** . Categories: *diere, soogdiere*.

Order: Carnivora

Family: Canidae

Canis adustus Sundevall, 1847 . Characteristics: omnivore; height: 35-50cm; the coat is grey or greyish-brown with a white stripe on each flank; the belly and insides of the legs are lighter; the ears stand erect; the dark,bushy tail has a white tip which distinguishes the Side-striped Jackal from the Black-backed Jackal;. Biotope: savanna, marshland, shrubland, grassland, woodland, swamps. ([Cillié 1997](#): 132)

- **witkwasjakkals** . Categories: *diere, soogdiere*.



Public Domain by Thomas A. Hermann



(CC) BY-NC-SA © David Bygott

Canis lupus familiaris Linnaeus, 1758 .

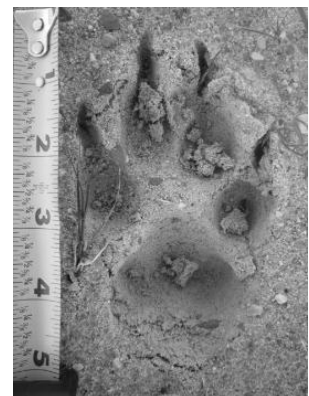
- **hond** . Categories: *diere, soogdiere*.



(CC) BY-SA ©



(CC) BY © Simon J. Tonge



(CC) BY-NC © inaturalist

Canis mesomelas Schreber, 1775 . Characteristics: omnivore; height: 30-50cm; the body and legs are red-brown; the insides of the legs, the belly and the throat are whitish; on the back and shoulders is a characteristic black saddle; the ears stand erect; the tail is bushy and black; the Black-backed Jackal is smaller than the Side-striped Jackal and lacks the white tip on the tail;. Biotope: savanna, scrubforest, grassland. ([Cillié 1997](#): 134)

- **rooijakkals** . Categories: *diere, soogdiere*.



Public Domain by Taa DoBeS team
(Boden/Güldemann/Naumann)



Public Domain by Taa DoBeS team
(Boden/Güldemann/Naumann)



Public Domain by Taa DoBeS team
(Boden/Güldemann/Naumann)

Lycaon pictus (Temminck, 1820) . Characteristics: carnivore; height: 75cm; these canids have a short dark snout and large, round ears; the body and legs are white with yellow, brown and black blotches, the bushy tail is white; the pattern and colour differs among individuals; down the centre of the forehead is a dark stripe;. Biotope: savanna, forest, grassland, woodland. ([Cillié 1997](#): 130)

- **wildehond** . Categories: *diere, soogdiere*.



(CC) BY © Michael Gäbler



(CC) BY-SA © Bart Swanson



(CC) BY-SA © Evan Summerson, Kaizerza

Otocyon megalotis (Desmarest, 1822) . Characteristics: insectivore; height 30-40 cm; the Bat-ear Fox gets its name from the big (14 cm), rounded ears; the coat is brownish-grey with a lighter belly, it is very fluffy; the bushy,black tail has a black tip;. Biotope: savanna, grassland. ([Cillié 1997](#): 136)

- **draaijakkals** . Categories: *diere, soogdiere*.
- **bakoorjakkals** . Categories: *diere, soogdiere*.
- **bakoorvos** . Categories: *diere, soogdiere*.



(CC) BY-SA ©



(CC) BY © Simon J. Tonge



(CC) BY-SA © Hans Hillewaert

[Vulpes chama](#) (A. Smith, 1833) . Characteristics: carnivore; height 30 cm; the fur is black or silver grey with the flanks and underside yellow; the tip of the bushy tail is always black; it is more slender than the Bat-eared Fox and its ears are smaller;. Biotope: arid savanna, semi-arid shrubland. ([Cillié 1997](#): 138)

- **silwerjakkals** . Categories: *diere, soogdiere*.
- **silwervos** . Categories: *diere, soogdiere*.



(CC) BY-SA ©



(CC) BY-SA © Susann Eurich



Public Domain by Friedrich Wilhelm Kuhnert
(1865–1926), Brehms Tierleben, Small Edition 1927

Family: Felidae

[Acinonyx jubatus](#) (Schreber, 1775) . Characteristics: carnivore; height: 70-90 cm, the Cheetah is a large cat with long legs and a small head; the coat is yellowish-white with black spots; the ears are small and round; the Cheetah is the fastest land animal reaching speeds of more than 100 km/h; it can be distinguished from the Leopard by its longer legs and the characteristic tear marks extending from the eyes to the mouth;. Biotope: grassland, desert. ([Cillié 1997](#): 114)

- **jagluiperd** . Categories: *diere, soogdiere*.
- **vlaktetier** . Categories: *diere, soogdiere*.
- **cheetah** . Categories: *diere, soogdiere*.



(CC) BY-SA © Paul Maritz



(CC) BY-SA © Malene Thyssen



(CC) BY-SA © Marcus T. Jaschen

[Caracal caracal](#) (Schreber, 1776) . Characteristics: carnivore; the coat is reddish-brown to brick-red, the belly and chest are white; this cat has remarkably strong hind legs and a short tail; the ears are large and pointed with large tufts of black hair, the back of the ear is black; they have black marks around the eyes and at the base of the whiskers;. Biotope: savanna, scrubforest, grassland, rocky area. ([Cillié 1997](#): 116)

- **rooikat** . Categories: *diere, soogdiere.*



(CC) BY-SA © € Van 3000 [2] from belgium belgikske belgiuistan - United Tribes ov Europe



(CC) BY-NC-SA © David Bygott

[Felis catus](#) Linnaeus, 1758 .

- **kat** . Categories: *diere, soogdiere.*
- **huiskat** . Categories: *diere, soogdiere.*



(CC) BY-SA ©



(CC) BY-SA ©



(CC) BY-SA ©

[Felis nigripes](#) Burchell, 1824 . Characteristics: carnivore; height: 25cm; this is the smallest cat in Africa; its coat varies from cinnamon to tawny and is patterned with dark spots that merge to form rings and stripes on the tail, legs and neck;. Biotope: savanna, scrubforest, grassland, desert. ([Cillié 1997](#): 122)

- **klein gekolde kat** . Categories: *diere, soogdiere*.



(CC) BY-SA © Zbyszko



(CC) BY-SA © Ltshears

[Felis sylvestris lybica](#) . Characteristics: carnivore; the African Wild Cat resembles the domestic cat; its colour varies from grey to dark grey with reddish stripes on the legs and a reddish tinge on the back of the ears; they are larger than the African black-footed Cat and have less spots;. Biotope: savanna, forest, shrubland, grassland, rocky area, desert, mountains. ([Cillié 1997](#): 120)

- **vaalboskat, wildekat** . Categories: *diere, soogdiere*.



Public Domain by Christfried Naumann



Public Domain by Christfried Naumann

[Leptailurus serval](#) (Schreber, 1776) . Characteristics: carnivore; height 55-65cm; the Serval is a slender cat with long legs, a small head and large rounded ears; the colour ranges from dull white to golden-yellow with black stripes down the neck and black spots on the body; it can be distinguished from the Cheetah by the lack of tear marks and the larger ears;. Biotope: savanna, forest, grassland. ([Cillié 1997](#): 118)

- **tierboskat** . Categories: *diere, soogdiere*.



(CC) BY-SA © unknown



(CC) PUBLICDOMAIN © Stolz, Gary M.

[Panthera leo](#) (Linnaeus, 1758) . Characteristics: carnivore; height: 110-120 cm; the Lion is the largest cat in Africa and the only one where the males have manes, the colour of the mane ranges from blonde to black; the back of the round ears is black; the males are much larger than the females and have manes;. Biotope: savanna, scrubforest, forest, grassland, mountains. ([Cillié 1997](#): 110)

- **leeu** . Categories: *diere, soogdiere*.



(CC) BY ©



© Geoff Gallice



Public Domain by Taa DoBeS team

(Boden/Güldemann/Naumann)

[Panthera pardus pardus](#) (Linnaeus, 1758) . Characteristics: carnivore; height: 45-80 cm; the Leopard has shorter legs than most felines; the colour of its coat varies from white to golden-brown, with black spots, often 6 to 8 spots form a rosette; the ears are rounded; it differs from the Cheetah in having shorter legs and rosette-like spots, also it lacks the tear marks from eye to mouth;. Biotope: savanna, rainforest, grassland, desert. ([Cillié 1997](#): 112)

- **luiperd** . Categories: *diere, soogdiere*.
- **tier** . Categories: *diere, soogdiere*.



(CC) BY ©



(CC) BY-SA ©



PD ©

Family: Herpestidae

[Atilax paludinosus](#) (G.[Baron] Cuvier, 1829) . Characteristics: carnivore; body-length: 45-60cm; the fur of this large mongoose ranges from black to rust-brown; the underside and the cheeks are lighter; the head is broad and the ears lie flat;. Biotope: savanna, scrubforest, rainforest, grassland, freshwater. ([Cillié 1997](#): 158)

- **watermuishond** . Categories: *diere, soogdiere*.



(CC) BY-NC-SA © David Bygott



(CC) BY © Jeff Heath and the Dogon and Bangime Languages Project

[Cynictis penicillata](#) (G.[Baron] Cuvier, 1829) . Characteristics: carnivore; the colour varies from yellowish-red to grey; the underside is slightly lighter;. Biotope: savanna, shrubland, grassland, semi-arid desert. ([Cillié 1997](#): 150)

- **rooimeerkat** . Categories: *diere, soogdiere*.
- **witkwasmuishond** . Categories: *diere, soogdiere*.



Public Domain by Christfried Naumann



Public Domain by Christfried Naumann



Public Domain by Christfried Naumann

[Galerella flavescens](#) (Bocage, 1889) . Characteristics: omnivore; the coat is dark reddish-brown with the last third of the tail black; the Slender Mongoose and the Kaokoland Slender Mongoose can be distinguished by habitat and the darker colour of the Kaokoland Slender Mongoose;. Biotope: woodland, rocky area. ([Cillié 1997](#): 152)

- **kaokolandse swartkwasmuishond** . Categories: *diere, soogdiere*.



(CC) BY-SA © Hans Hillewaert

[Galerella pulverulenta](#) (Wagner, 1839) . Characteristics: omnivore; this Mongoose looks grey from a distance but is actually black with white and grey speckles; it can be distinguished from the other Mongooses by colour and habitat;. Biotope: forest, semi-desert shrubland, fynbos. ([Cillié 1997](#): 154)

- **kleingrysmuishond** . Categories: *diere, soogdiere*.



(CC) BY-SA © JonRichfield



(CC) BY-NC-SA © Bernard DUPONT

[Galerella sanguinea](#) (Rüppell, 1835) . Characteristics: omnivore; the colour of this Mongoose is usually correlated with the soil colour for camouflage and ranges from yellowish-grey to reddish; the long and upwards bent tail has a black tip;. ([Cillié 1997](#): 152)

- **swartkwasmuishond** . Categories: *diere, soogdiere*.



(CC) BY-SA © Sara&Joachim



Public Domain by Andrew Smith (1797-1872)



(CC) BY © Jeff Heath and the Dogon and Bangime Languages Project

[Helogale parvula](#) (Sundevall, 1847) . Characteristics: carnivore; body-length: 20-30 cm; the coat is dark brown to rust-brown; the ears are prominent;. Biotope: savanna, forest, shrubland. ([Cillié 1997](#): 162)

- **dwergmuishond** . Categories: *diere*, *soogdiere*.



(CC) BY-SA © unknown (Jutta234)



(CC) BY-SA © Haplochromis

[Herpestes ichneumon](#) (Linnaeus, 1758) . Characteristics: carnivore; body-length: 50-60 cm; they have a long, low-slung form; the grey coat is dotted with brownish speckles; the tail ends with a black tassel;. Biotope: marshland, swamps. ([Cillié 1997](#): 166)

- **grootgrysmuishond** . Categories: *diere*, *soogdiere*.



(CC) BY-SA © □□□□□□

Ichneumia albicauda (G.[Baron] Cuvier, 1829) . Characteristics: omnivore; body-length 60cm; the coat is grey-brown; the hind legs are very long causing the back to slant forward when it walks; the tail is covered in long white hair;. Biotope: savanna, forest, grassland, woodland. (Cillie 1997: 156)

- **witstertmuishond** . Categories: *diere*, *soogdiere*.



(CC) BY-SA © MCSchaeffer



(CC) MARK © Frank E. Beppard



(CC) BY © Jeff Heath and the Dogon and Bangime Languages Project

Mungos mungo (Gmelin, 1788) . Characteristics: carnivore; body-length: 30-45 cm; the colour varies from light grey to reddish-brown with dark crossbands on the back; the ears are small and round; the snout is pointed;. Biotope: savanna, scrubforest, grassland, woodland, rocky area. (Cillie 1997: 160)

- **gebande muishond** . Categories: *diere*, *soogdiere*.



(CC) BY-SA © unknown (JP)



(CC) BY-SA © unknown (JP)



Public Domain by Daderot

Suricata suricatta (Schreber, 1776) . Characteristics: carnivore; body-length: 25-35cm; the colour is silvery-brown with darker spots which may merge into crosslines on the lower back; the tail is not bushy and dark tipped;. Biotope: savanna, semi-arid desert. (Cillie 1997: 164)

- **graatjiemeerkat** . Categories: *diere*, *soogdiere*.
- **stokstertmeerkat** . Categories: *diere*, *soogdiere*.
- **meerkat** . "meerkat". Categories: *diere*, *soogdiere*.



PD ©



(CC) BY-SA ©

Family: Hyaenidae

[*Crocuta crocuta*](#) (Erxleben, 1777) . Characteristics: carnivore; height: 70-90 cm; the colour ranges from dull yellow to white, with irregular dark spots;it has a short mane and overall short hair; the animal has a large head with round ears, a strong neck and a sloping back;. Biotope: savanna,scrubforest, montane forest, grassland. ([Cillié 1997](#): 124)

- **gevlekte hiëna** . Categories: *diere, soogdiere*.



(CC) BY-SA © Gastrocycle



(CC) BY © Marieke Kuijpers



(CC) BY-SA © Jerry Friedman

[*Hyaena brunnea*](#) Thunberg, 1820 . Characteristics: carnivore; height: 70-80 cm; the animal is dark brown with a light cloak on the shoulders and neck, the back and neck are covered in long fur; the belly and forehead are lighter coloured; the legs are dark and have light rings; it has large, pointy ears; the forequarters are more strongly developed than the hindquarters, the back is sloping;. Biotope: savanna, grassland, desert. ([Cillié 1997](#): 126)

- **strandwolf** . Categories: *diere, soogdiere*.
- **strandjut** . Categories: *diere, soogdiere*.
- **bruinhiëna** . Categories: *diere, soogdiere*.



(CC) BY-SA © unknown (<http://www.pistoleros.no>)



(CC) BY-NC-SA © Picasa



(CC) MARK © Alfred Edmund Brehm (1829-1884)

Proteles cristata (Sparman, 1783) . Characteristics: insectivore; height: 40-50 cm; the coat is brownish-yellow with approximately five distinct vertical stripes on the back; the snout and lower parts of the legs are black; the bushy tail has a black tip; it has large, rotatable ears; it can be distinguished from the Hyaenas by its smaller size;. Biotope: savanna, grassland. ([Cillié 1997](#): 128)

- **aardwolf** . Categories: *diere, soogdiere*.
- **maanhaarjakkals** . Categories: *diere, soogdiere*.



(CC) BY-SA © Dominik Käuferle, Dkaeufelerle



(CC) BY-SA ©



Author died more than 70 years ago public domain
images ©

Family: Mustelidae

Aonyx capensis (Schinz, 1821) . Characteristics: carnivore; body-length: 75-90 cm; the upper parts of the body are chestnut while the belly, chest, throat and face are lighter coloured; the paws are clawless except for three digits of the hind paws; they can be distinguished from the Spotted-necked Otter by the bigger size and the lack of spots on the throat;. Biotope: freshwater. ([Cillié 1997](#): 168)

- **Kaapse groototter** . Categories: *diere, soogdiere*.
- **groototter** . Categories: *diere, soogdiere*.



Public Domain by unknown (Ruby 1x2)

[Hydrictis maculicollis](#) (Lichtenstein, 1835) . Characteristics: carnivore; body-length: 70-75 cm; the fur is usually reddish to brown with white spots on the chest and throat; it has sleek and webbed paws for swimming;. Biotope: freshwater, swamps. ([Cillié 1997](#): 166)

- **kleinotter** . Categories: *diere, soogdiere*.



(CC) BY © Derek Keats



(CC) BY © Rennett Stowe

[Ictonyx striatus](#) (Perry, 1810) . Characteristics: carnivore; height 10-15cm; this short legged predator has black fur with 4 parallel, white stripes on the back; it has white marks underneath the ears and between the eyes;. Biotope: savanna, forest, grassland, woodland, semi-desert, swamps, mountains. ([Cillié 1997](#): 148)

- **stinkmuishond** . Categories: *diere, soogdiere*.



(CC) BY © Jeff Heath and the Dogon and Bangime Languages Project



CC-Zero ©



(CC) BY-NC-SA © Antonius El Kommos

Mellivora capensis (Schreber, 1776) . Characteristics: omnivore; height: 25-30cm; the body is black with a broad, greyish-white saddle on the back and head;the legs are short and equipped with sharp claws; the black tail is short; the ears are very small;. Biotope: savanna, forest, grassland. ([Cillié 1997](#): 140)

- **ratel** . Categories: *diere, soogdiere*.



(CC) BY-SA ©



(CC) BY-SA © Matěj Batha



(CC) MARK © Creator:Joseph Smit

Family: Viverridae

Civettictis civetta (Schreber, 1776) . Characteristics: omnivore; height: 40 cm; the body is silver or cream in colour with distinct, black stripes and spots on the hindquarters; a black mark begins between the ears and extends to the tip of the tail; the legs are black; the face is black around the eyes, grey on the forehead and white around the muzzle;. Biotope: savanna, scrubforest, rainforest, grassland. ([Cillié 1997](#): 142)

- **siwet** . Categories: *diere, soogdiere*.



Public Domain by unknown

Genetta genetta (Linnaeus, 1758) . Characteristics: carnivore; this cat-like animal has a grey coat with black spots on it; the tail is very long and has grey and black rings, the tip is always white; the ears are very thin and rounded; each individual has a characteristic face mask;. Biotope: savanna, forest, scrubforest, grassland. ([Cillié 1997](#): 144)

- **kleinkolmuskejaatkat** . Categories: *diere, soogdiere*.



(CC) BY © Jeff Heath and the Dogon and Bangime
Languages Project



(CC) BY © Jeff Heath and the Dogon and Bangime
Languages Project



(CC) BY-SA © Liné1

[Genetta maculata](#) (Gray, 1830) . Characteristics: carnivore; small cat-like animal with a grey coat and rustbrown spots and stripes; a distinct band of rustbrown hair begins at the shoulders and ends at the base of the tail; the tail is grey with rustbrown rings, the tip is black; the face is light with white marks underneath the eyes and on the muzzle which are divided by a black mark;. Biotope: savanna, rainforest, grassland, woodland, swamps. ([Cillié 1997](#): 146)

- **rooikolmuskejaatkat** . Categories: *diere, soogdiere*.

[Genetta tigrina](#) (Schreber, 1776) . Characteristics: carnivore; this cat-like animal has a greyish-white coat with dark spots; the tail is long and dark with white rings, the tip is black; a distinct band of dark hair begins just behind the shoulders and ends at the base of the tail; there are white spots underneath the eyes and the cheeks are white, these white areas are divided by a dark mark;. Biotope: savanna, forest, grassland, fynbos. ([Cillié 1997](#): 146)

- **grootkolmuskejaatkat** . Categories: *diere, soogdiere*.



Public Domain by Wyman & Sons Limited



(CC) BY-SA © Altaileopard, Jochen Ackermann

Order: Chiroptera

Family: Emballonuridae

[Taphozous mauritanus](#) E. Geoffroy, 1818 . Characteristics: insectivore; body-length: 10-11cm, wing-span: 18-20cm; the dorsal pelage is grizzles grey, the ventral fur is characteristically white; the ears are large and triangular;. Biotope: savanna, forest, grassland, swamps. ([Cillié 1997](#): 208)

- **witlyfvlermuis** . Categories: *diere, soogdiere*.



(CC) BY © Frank Vassen



(CC) BY-SA © Mimi Neumann



(CC) BY-NC © inaturalist

Family: Molossidae

Chaerephon pumilus (Cretzschmar, 1826) . Characteristics: insectivore; body-length: 5-25 cm, wing-span: 25 cm; dark brown back, lighter belly; oversized round ears;. Biotope: savanna, forest, grassland. ([Cillié 1997](#): 208)

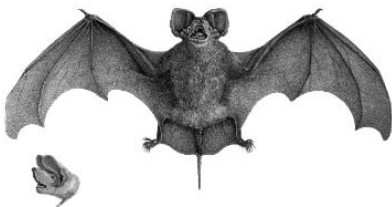
- **klein losstertvlermuis** . Categories: *diere*, *soogdiere*.



Public Domain by Eduard Rüppell

Tadarida aegyptiaca . Characteristics: insectivore; body-length: 10-12cm, wing-span: 35cm; greyish-brown dorsal coat; very large ears; long snout with slightly upturned lip;. Biotope: savanna, scrubforest, grassland, semi-arid desert. ([Cillié 1997](#): 208)

- **egiptiese losstertvlermuis** . Categories: *diere*, *soogdiere*.



Public Domain by unknown

Family: Nycteridae

Nycteris thebaica E. Geoffroy, 1818 . Characteristics: carnivore; body-length: 8-16 cm, wing-span: 27-30 cm; long and silky fur; colour ranges from grey to red and brown; the underparts are greyish white; the ears are enormous; and the large nose leaf is split along the middle of the face;. Biotope: savanna, forest, grassland, woodland. ([Cillié 1997](#): 210)

- **Egiptiese spleetneusvlermuis** . Categories: *diere, soogdiere*.



(CC) BY © Susan Ellis, Bugwood.org



(CC) BY © Jeff Heath and the Dogon and Bangime Languages Project



(CC) BY-NC-SA © Description de l'Égypte, Book 34 (1826), Volume I - Planches : Histoire Naturelle.

Family: Pteropodidae

Epomophorus gambianus (Ogilby, 1835) . Characteristics: herbivore; body-length: 12-25cm; wingspan: 50cm; the fur is greyish brown to nearly white in colour; the face appears dog-like with the long snout and the simple ears, at the base of which are a white marks; the males are larger and have characteristic patches of white fur on the shoulders;. Biotope: savanna, forest, woodland. ([Cillié 1997](#): 207)

- **gambiese witkolvrugtevlermuis** . Categories: *diere, soogdiere*.



(CC) BY © STUART_BURNS1

Epomophorus wahlbergi (Sundevall, 1846) . Characteristics: herbivore; body-length: 12-25cm; wingspan: 50cm; greyish to white fur; dog-like face; white patch at the base of the ear; males are larger and have white shoulder epaulettes;. Biotope: rainforest, mangrove forest. ([Cillié 1997](#): 207)

- **Wahlberg se vrugtevlermuis** . Categories: *diere, soogdiere*.



(CC) BY © Susan Ellis, Bugwoord.org

[Rousettus aegyptiacus](#) (E. Geoffroy, 1810) . Characteristics: herbivore; body-length: 15cm, wing-span: 60cm; dark brown fur; pointy ears;. Biotope: savanna, forest, grassland. ([Cillié 1997](#): 207)

- **egiptiese vrugtevlermuis** . Categories: *diere, soogdiere*.



(CC) BY-SA © Artemy Voikhansky



(CC) BY-SA ©



(CC) BY-NC-SA © Description de l'Égypte, Book 34 (1826), Volume I - Planches : Histoire Naturelle.

Family: Rhinolophidae

[Hipposideros caffer](#) (Sundevall, 1846) . Characteristics: insectivore; body-length: 8-9 cm, wing-span: 29 cm; the colour varies from grey-brown to golden-yellow; the ears are large and pointy; the nose-leaf is horseshoe-shaped; some have large (4 cm) teats in the pubic area;. Biotope: savanna, forest. ([Cillié 1997](#): 210)

- **Sundevall se bladneusvlermuis** .



(CC) BY-SA © Ursula Franke

Rhinolophus clivosus Cretzschmar, 1826 . Characteristics: insectivore; body-length: 7-8cm, wing-span: 35cm; the coat is light brown on the back and yellowish-grey on the underside; the nose leaf is complex and horseshoe-shaped the ears are long and sharply pointed;. Biotope: savanna, shrubland, grassland, woodland, semi-arid desert. (Cillié 1997: 210)

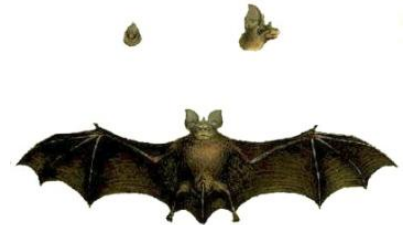
- **Geoffroy se saalnevslermuis** .



(CC) BY-NC © inaturalist



(CC) BY-NC © inaturalist



Public Domain by

Family: Vespertilionidae

Eptesicus capensis (A. Smith, 1829) . Characteristics: insectivore; body-length: 8-9cm; dark greyish brown fur with white to yellowish underparts; the forehead is dome-shaped; small ears;. Biotope: savanna, forest, grassland, woodland. (Cillié 1997: 209)

- **kaapse dakvlermuis** . Categories: *diere, soogdiere*.

Miniopterus schreibersi (Kuhl, 1817) . Characteristics: insectivore; body-length: 5-6 cm, wing-span: 30-35 cm; the dorsal pelage is grey-brown the underside is lighter; the wingmembrane is almost black; the tail is almost as long as the body (5 cm); the snout is short and the ears relatively small;. Biotope: savanna, grassland, mountains. (Cillié 1997: 209)

- **Schreibers se grot-vlermuis** . Categories: *diere, soogdiere*.



(CC) BY-SA ©



Public Domain by

Pipistrellus nanus (Peters, 1852) . Characteristics: insectivore; total body-length: 7-8 cm, half of which is tail; the fur is dark brown with reddish to golden tips, the underparts are lighter; the mouth is large and the ears are triangular;. Biotope: savanna, forest, woodland. (Cillié 1997: 209)

- **piesangvlermuis** . Categories: *diere, soogdiere*.



(CC) BY-NC © Colombo Raphaël



(CC) BY-NC © inaturalist



(CC) BY-NC © inaturalist

Order: Erinaceomorpha

Family: Erinaceidae

[*Atelerix frontalis*](#) (A. Smith, 1831) . Characteristics: insectivore; the back and flanks are covered with black and white spines; on the forehead is a characteristic white band; the snout is pointed;. Biotope: savanna, scrubforest, grassland.

([Cillié 1997](#): 180)

- **Suider-Afrikaanse krimpvarkie** . Categories: *diere, soogdiere*.
- **krimpvarkie** . Categories: *diere, soogdiere*.



Public Domain by Christfried Naumann

Order: Hyracoidea

Family: Procaviidae

[*Procavia capensis*](#) (Pallas, 1766) . Characteristics: herbivore; body-length: 50 cm; this stockily built animal has a dark brown to light grey fur (depending on the area); on the back is a patch of darker hair; it has prominent upper incisors;. Biotope: savanna, scrubforest, rocky area, desert. ([Cillié 1997](#): 176)

- **klipdassie** . Categories: *diere, soogdiere*.



(CC) BY-SA ©



(CC) BY-SA ©

Order: Lagomorpha

Family: Leporidae

Lepus capensis Linnaeus, 1758 . Characteristics: herbivore; this typical hare has well developed hind legs for running and leaping; the ears as well as the eyes are large; the colour of the coat varies from light brown to reddish to sandy grey; the females are larger than the males;. Biotope: grassland, desert. ([Cillié 1997](#): 186)

- **vlakhaas** . Categories: *diere, soogdiere*.
- **rooipootjie** . Categories: *diere, soogdiere*.



(CC) BY-SA © benjamint



(CC) MARK © Creator:Joseph Smit



(CC) BY-SA © Haplochromis

Lepus saxatilis F. Cuvier, 1823 . Characteristics: herbivore; body-length: 45-65cm; the fur on the back is grizzled gray with black speckles; the belly is white; the short tail is dark on top and white underneath; the erect ears are prominent; the Scrub Hare is larger than the Cape Hare. Biotope: savanna, woodland. ([Cillié 1997](#): 184)

- **kolhaas** . Categories: *diere, soogdiere*.



(CC) BY-SA © Masteraah



GNU Free Documentation License © Lee R. Berger,
uploaded by Profberger at en.wikipedia

Pronolagus crassicaudatus (I. Geoffroy, 1832) . Characteristics: herbivore; this is the largest Red rock rabbit; its thick woolly coat is reddish coloured; the bushy tail is red- brown to dark brown on both sides;. Biotope: rocky area, desert, mountains. ([Cillié 1997](#): 188)

- **rooiklipkonyne** . Categories: *diere, soogdiere*.

Pronolagus randensis Jameson, 1907 . Characteristics: herbivore; this rabbit has a salt-and-pepper fur of reddish-brown colour; the underparts are lighter; the chin and cheeks are whitish-grey; it has strong hind legs and large, sparsely haired ears;. ([Cillié 1997](#): 188)

- **rooiklipkonyne** . Categories: *diere, soogdiere*.

Pronolagus rupestris (A. Smith, 1834) . Characteristics: herbivore; height: 40-60 cm; the thick hair on the back is of a warm brown; the underparts are lighter; the tail is dark brown; the long ears and the face are grey;. Biotope: shrubland, grassland, rocky area, mountains. ([Cillié 1997](#): 188)

- **rooiklipkonyne** . Categories: *diere, soogdiere*.

Order: Macroscelidea

Family: Macroscelididae

Elephantulus myurus Thomas and Schwann, 1906 . Characteristics: carnivore; body-length: 26cm; the dorsal coat is brownish-grey and the underside is white, the hind legs are more developed than the forelegs; the nose is long and trunk-like;. Biotope: scrubforest, rocky area. ([Cillié 1997](#): 206)

- **oostelike klipklaasneus** . Categories: *diere, soogdiere*.

Macroscelides proboscideus (Shaw, 1800) . Characteristics: carnivore; length: 23cm, tail-length: 12cm; grey-brownish coloured fur; elongated highly mobile snout; thin round ears; long sparsely haired tail;. Biotope: scrubforest, desert, semi-arid desert. ([Stuart and Stuart 2007](#): 34)

- **rondeoor-klaasneus** . Categories: *diere, soogdiere*.



(CC) BY-SA ©



Public Domain by Christfried Naumann

Order: Perissodactyla

Family: Equidae

[Equus quagga](#) Boddaert, 1785 . Characteristics: herbivore; height: 110-145cm; this Zebra is thick built and short legged; the body is white with thick,vertical, black stripes alternating with lighter shadow stripes; the stripes become less distinct towards the hooves; the ears are small;. Biotope: savanna, grassland, desert. ([Cillié 1997](#): 86)

- **vlaktek wagga** . Categories: *dier*, *soogdier*.



(CC) BY ©



(CC) BY ©



(CC) BY ©

[Equus zebra hartmannae](#) . Characteristics: herbivore; the coat is yellowish-white with narrow black stripes; the stripes go all the way to the hooves; the belly remains white; there is a dewlap; the stripes on the buttocks are narrower than those of the Cape Mountain Zebra;. Biotope: desert, mountains. ([Cillié 1997](#): 90)

- **Hartmannse bergkwagga** . Categories: *dier*, *soogdier*.



(CC) BY-SA ©



(CC) BY-SA ©



(CC) BY-SA ©

[Equus zebra zebra](#) Linnaeus, 1758 . Characteristics: herbivore; height: 120 -15cm; The coat is white with close black stripes; the stripes on the buttocks are broad; the stripes go all the way to the hooves; the belly remains white; on the nose there is an orange suffusion;there is a dewlap; males are larger than females;. Biotope: mountains. ([Cillié 1997](#): 88)

- **kaapse bergkwagga** . Categories: *dier*, *soogdier*.



(CC) BY-NC-SA © Arthur Chapman



(CC) BY-NC-SA © Arthur Chapman

Family: Rhinocerotidae

Ceratotherium simum (Burchell, 1817) . Characteristics: herbivore; height: 150-180cm; the body is barrel-shaped with a low hanging head; the ears are pointy; the head is long with two horns on the snout, the front horn being the bigger one (± 85 cm); the square lips are characteristic; the white Rhinoceros is bigger than the black Rhinoceros. Biotope: savanna, forest, grassland. (Cillié 1997: 102)

- **witrenoster** . Categories: *diere*, *soogdiere*.



(CC) BY-SA © Ryan Harvey



(CC) BY-SA © unknown (Wj32)

Diceros bicornis (Linnaeus, 1758) . Characteristics: herbivore; height: 130-180cm; the the body is barrel shaped with the head held higher than the white Rhinoceros does; the ears are rounded; two horns grow on the snout, the front one is usually larger; the upper lip is pointed;. Biotope: savanna, scrubforest, grassland, desert. (Cillié 1997: 104)

- **swartrenoster** . Categories: *diere*, *soogdiere*.



(CC) BY-SA ©



(CC) BY-SA ©



Public Domain by Christfried Naumann

Order: Pholidota

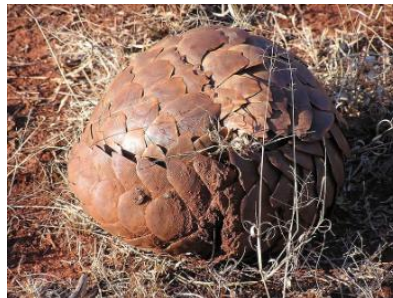
Family: Manidae

[Manis temminckii](#) Smuts, 1832 . Characteristics: insectivore; body-length: 40-70cm; this animal is covered in very hard, brown scales, giving it a pine-cone like look; only the belly, face and insides of the strong legs are naked; it has a small head with a pointed snout; the tongue is very long (25 cm) and sticky making it perfect for ant and termite hunt;. Biotope: savanna, scrubforest, forest, grassland. ([Cillié 1997](#): 174)

- **Suider-Afrikaanse ietermagog** . Categories: *diere, soogdiere*.
- **ietermagog** . Categories: *diere, soogdiere*.



Public Domain by Masteraah



Public Domain by Masteraah

Order: Primates

Family: Cercopithecidae

[Cercopithecus mitis](#) Wolf, 1822 . Characteristics: omnivore; body-length: 50-65cm, tail-length: 50 cm; the upper parts of the body are grey, the limbs are darker, the chest and belly are dull yellow; the face is black, just above the brow line is a prominent row of forward pointing white fur;. Biotope: forest. ([Cillié 1997](#): 202)

- **samango-aap** . Categories: *diere, soogdiere*.



(CC) BY-NC-SA © Flickr



(CC) BY ©

Chlorocebus aethiops (Linnaeus, 1758) . Characteristics: omnivore; body-length: 40-60 cm, tail-length: 30-50 cm; the fur is light grey with the belly and flanks even lighter; the face is black with a white fringe surrounding it; in males the scrotum and surrounding area are bright blue or greenish coloured;. Biotope: savanna, scrubforest, grassland. (Cillié 1997: 200)

- **blouaap** . Categories: *diere*, *soogdiere*.



(CC) BY-SA ©



(CC) MARK © Rotational



(CC) BY-NC © steveohley

Family: Galagonidae

Galago moholi A. Smith, 1836 . Characteristics: omnivore; body-length: 14-17cm; this small primate has light brown fur with a yellow tinge towards the belly and limbs; the extremely large, bare ears can be moved independently and have four vertical ridges; the large eyes are surrounded by a dark mask; the hind legs are longer than the forelegs;. Biotope: savanna, forest, grassland, semi-arid woodland. (Cillié 1997: 196)

- **nagapie** . Categories: *diere*, *soogdiere*.



(CC) BY-SA © Joachim Huber

Otolemur crassicaudatus (É. Geoffroy Saint-Hilaire, 1812) . Characteristics: omnivore; body-length: 25-50 cm, tail-length: 30-50 cm; the silvery-brown to grey fur is thick and woolly, the underside is lighter coloured; the large eyes ears are characteristic; the hind legs are very powerful and larger than the forelegs; it is bigger than the Moholi Bushbaby and its tail is much thicker and woollier;. Biotope: forest. ([Cillié 1997](#): 198)

- **bosnagaap** . Categories: *diere*, *soogdiere*.



(CC) BY-SA © unknown (buecherfresser)



(CC) BY-SA © Hans Hillewaert (Lycaon)

Order: Proboscidea

Family: Elephantidae

Loxodonta africana (Blumenbach, 1797) . Characteristics: herbivore; height: 3-3,75m; the African Bush elephant has large flat ears; its trunk ends with two opposing extensions; both sexes have large tusks; females are smaller and have smaller tusks;. Biotope: savanna, marshland, forest, grassland, desert, swamps. ([Cillié 1997](#): 100)

- **savanne-olifant** . Categories: *diere*, *soogdiere*.
- **olifant** . Categories: *diere*, *soogdiere*.



(CC) BY-SA © nickandmel2006



Public Domain by Gorgo

Order: Rodentia

Family: Bathyergidae

[*Cryptomys hottentotus*](#) (Lesson, 1826) . Characteristics: herbivore; body-length: 10-16 cm; the thick fur is grey or brown, in some individuals a white blaze is found on the head; the eyes are not well developed;. Biotope: savanna, grassland. ([Cillié 1997](#): 211)

- **vaalmol** . Categories: *diere, soogdiere*.
- **knaagdiermol** . Categories: *diere, soogdiere*.



CC-Zero ©

Family: Hystricidae

[*Hystrix africae australis*](#) Peters, 1852 . Characteristics: herbivore; body-length: 60-80 cm; this very large rodent is covered with quills and spines; the 30-50 cm long quills are white with black rings; the belly, legs and face are covered with short, coarse hair; females are larger than males;. Biotope: savanna, forest, shrubland, grassland, rocky area. ([Cillié 1997](#): 182)

- **ystervark** . Categories: *diere, soogdiere*.



(CC) BY-SA © unknown (emijrp)



(CC) BY-SA © unknown

Family: Muridae

[*Aethomys namaquensis*](#) (A. Smith, 1834) . Characteristics: herbivore; length:23-29 cm, tail-length: 15 cm; the fur is yellowish-brown with lighter underparts; the tail is covered in scales. Biotope: savanna, forest, shrubland, grassland, rocky area, desert. ([Cillié 1997](#): 213)

- **Namakwalandse klipmuis** . Categories: *diere, soogdiere*.



(CC) BY ©

[Dendromus melanotis](#) Smith, 1834 . Characteristics: herbivore; body-length: 6-9cm, tail-length: 7-13 cm; ash-grey on the back and whitish on the underside; the long, curly tail is used for climbing; the eyes are large;. Biotope: savanna, grassland. ([Cillié 1997](#): 214)

- **grysklimmuis** . Categories: *diere, soogdiere*.



(CC) BY-NC-SA © Phil Myers, Museum of Zoology,
University of Michigan-Ann Arbor

[Lemniscomys rosalia](#) (Thomas, 1904) . Characteristics: herbivore; length: 27cm; colour ranges from pale grey to brown, down the mid-back is a characteristic dark stripe; the long tail is slim with little hair;. Biotope: savanna. ([Cillié 1997](#): 212)

- **eenstreepmuis** . Categories: *diere, soogdiere*.



(CC) BY © Simon J. Tonge



(CC) BY © Simon J. Tonge

[Mus indutus](#) (Thomas, 1910) .

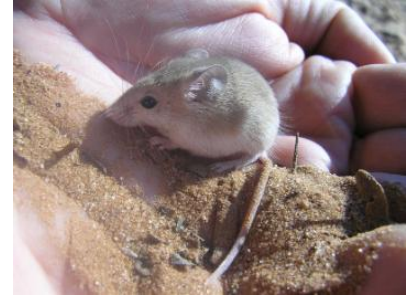
- **woestyndwergmuis** . Categories: *diere, soogdiere*.



Public Domain by Gldemann/Naumann



Public Domain by Gldemann/Naumann



Public Domain by Gldemann/Naumann

[Otomys angoniensis](#) Wroughton, 1906 . Characteristics: herbivore; length: 30 cm; pale to dark brown with greyish underparts; very short tail dark above and paler below; very large ears; larger than the similar Vlei rat. Biotope: savanna, forest, grassland, desert. ([Cilli 1997](#): 212)

- **Angoni vleirot** . Categories: *diere, soogdiere*.

[Parotomys brantsii](#) (A. Smith, 1834) . Characteristics: Herbivore; length: 25 cm; pale yellow-brown fur with lighter underparts;. Biotope: semi- arid desert. ([Cilli 1997](#): 212)

- **Brants se fluitrot** . Categories: *diere, soogdiere*.



(CC) BY-SA ©



(CC) BY-NC-SA © Bernard DUPONT

[Rhabdomys pumilio](#) (Sparman, 1784) . Characteristics: herbivore; length: 19cm; the fur is brown on the back and white on the belly; an the back are four characteristic dark stripes;. Biotope: montane savanna. ([Cilli 1997](#): 213)

- **streepmuis** . Categories: *diere, soogdiere*.



(CC) BY-NC-SA © Arthur Chapman



(CC) BY © Simon J. Tonge



(CC) BY-SA © C.R.Selvakumar

Saccostomus campestris Peters, 1846 . Characteristics: herbivore; body-length: 9-18cm; the fur is grey-brown on the back, lighter on the flanks and white on the belly; the tail is short; the eyes are small; it can store food in cheek-pouches;. Biotope: savanna, grassland, desert. ([Cillié 1997](#): 214)

- **wangsakmuis** . Categories: *diere*, *soogdiere*.



(CC) BY-SA ©

Tatera leucogaster (Peters, 1852) . Characteristics: omnivore; length: 28cm (including the tail); the fur is orange-brown to reddish-brown; the eyes are large;. Biotope: shrubland, grassland. ([Cillié 1997](#): 214)

- **Bosveldse nagmuis** . Categories: *diere*, *soogdiere*.

Thallomys paedulus (Sundevall, 1846) . Characteristics: herbivore; body-length: 12-16cm, tail-length: 13-21cm; grey-yellow on the back and white on the belly; the long tail is brown; dark rings around the eyes;. Biotope: savanna, grassland, woodland. ([Cillié 1997](#): 213)

- **boomrot** . Categories: *diere*, *soogdiere*.



(CC) BY-SA ©



Public Domain by Christfried Naumann



Public Domain by Christfried Naumann

Family: Myoxidae

Graphiurus murinus (Desmarest, 1822) . Characteristics: omnivore; body-length: 7-16cm; the fur is grey on the back and white on the underparts; the tail is long(5-13 cm) and fluffy; the eyes have a black mark around them; the ears are round;. Biotope: savanna, forest, grassland. ([Cillié 1997](#): 211)

- **boswaaierstertmuis** . Categories: *diere*, *soogdiere*.



(CC) BY-NC-SA © James Dowling-Healey



(CC) BY-SA © Николай Усик /
<http://paradoxusik.livejournal.com/>



(CC) MARK © Wikimedia Commons

Family: Pedetidae

Pedetes capensis (Forster, 1778) . Characteristics: omnivore; body-length: 35-45 cm; the Springhare is actually a rodent; with its powerful hind legs and the short forelegs it resembles a small kangaroo (though unrelated), it can leap over 2m in one jump; the colour of the coat varies from pale grey to reddish brown, the underparts are white; the long tail always has a broad black tip; it has long ears and conspicuously large eyes;. Biotope: savanna, grassland, desert. (Cillie 1997: 190)

- **springhaas** . Categories: *diere, soogdiere*.



(CC) BY-NC-SA © Bernard DUPONT



(CC) BY-NC-SA © Bernard DUPONT



(CC) MARK © Creator:Richard Lydekker

Family: Petromuridae

Petromus typicus A. Smith, 1831 . Characteristics: herbivore; body-length: 27-38 cm including the tail; the Dassie rat is neither a Dassie nor a rat, it is a rodent of squirrel-like appearance but with a less bushy tail; the fur is dark brown to grey with lighter underparts;. Biotope: rocky area, desert, mountains. (Cillie 1997: 211)

- **dassierot** . Categories: *diere, soogdiere*.



(CC) BY ©



(CC) BY ©



(CC) BY-SA ©

Family: Sciuridae

Paraxerus cepapi (A. Smith, 1836) . Characteristics: omnivore; body-length: 35 cm, half of which is tail; the colour varies depending on the region from pale grey to brown; the head and legs are rusty coloured; the chest is lighter coloured; the long, bushy tail is carried extended backwards;. Biotope: savanna, woodland. ([Cillié 1997](#): 194)

- **geelpooteekhorinkie** . Categories: *diere, soogdiere*.
- **boomeekhoring** . Categories: *diere, soogdiere*.



(CC) BY © Simon J. Tonge



(CC) BY © Simon J. Tonge



Public Domain by Androstachys

Xerus inauris (Zimmermann, 1780) . Characteristics: omnivore; body-length: 45 cm; the fur is cinnamon on the back and white on the face, belly, and insides of the leg; on the flanks are characteristic white stripes; the bushy tail is as long as the body itself and covered with long whitish hair; the ears are simple openings on the side of the head and the eyes are fairly large;. Biotope: savanna, grassland, desert, dune. ([Cillié 1997](#): 192)

- **Suidelike waaierstert-eekhoring** . Categories: *diere, soogdiere*.
- **waaierstertmeerkat** . Categories: *diere, soogdiere*.
- **erdmannetjie** . Categories: *diere, soogdiere*.
- **waaierstertgrondeekhoring** . Categories: *diere, soogdiere*.



(CC) BY-NC-SA © Bernard DUPONT



(CC) BY-SA ©



(CC) BY © Neil Strickland

Family: Thryonomyidae

Thryonomys swinderianus (Temminck, 1827) . Characteristics: herbivore; body-length: 60cm; the Greater Canerat's heavyset body is covered in a coarse, yellowish-brown pelage; the underside is much lighter; they have rounded ears; they are bigger than the Lesser Canerat; . Biotope: marshland. ([Cillié 1997](#): 178)

- **grootrietrot** . Categories: *diere, soogdiere*.



(CC) BY-SA ©



(CC) MARK © GMutzet / Alfred Brehm



Public Domain by

Order: Soricomorpha

Family: Soricidae

Crocidura hirta Peters, 1852 . Characteristics: insectivore; length: 13 cm, tail-length: 4; this greyish brown shrew has a short tail, a long snout and large round ears; the eyes are small; . Biotope: savanna, grassland, semi-arid desert. ([Cillié 1997](#): 206)

- **klein rooiskeerbek** . Categories: *diere, soogdiere*.



(CC) BY-SA ©

Order: Tubulidentata

Family: Orycteropodidae

[Orycteropus afer](#) (Pallas, 1766) . Characteristics: insectivore; height: 60 cm; this animal has a long pig-like snout, large, erect ears and a thick tail; most of the body is naked, only the legs are covered with dark hair; the forefeet have strong claws for digging; it has a long (30 cm), sticky tongue which allows it to catch termites and ants;. Biotope: savanna, grassland. ([Cillié 1997](#): 172)

- **aardvark** . Categories: *diere*, *soogdiere*.
- **erdvark** . Categories: *diere*, *soogdiere*.



Public Domain by Christfried Naumann



(CC) BY-SA ©



(CC) BY-SA ©

Class: Reptilia

Order: Squamata

Family: Agamidae

[Agama aculeata](#) Merrem, 1820 .

- **koggelmander** . "agama". Categories: *diere*, *reptiele*.



Public Domain by Christfried Naumann



Public Domain by Christfried Naumann

[Agama agama](#) (Linnaeus, 1758) .

- **koggelmander** . "agama". Categories: *diere*, *reptiele*.



Public Domain by Christfried Naumann

Family: Chamaeleonidae

[Chamaeleo](#) .

- **trapsuutjies, trapsoetjies** . Categories: *diere, reptiele*.
- **verkleurmannetjie** . Categories: *diere, reptiele*.
- **kameleon** . Categories: *diere, reptiele*.



Public Domain by Alexis Naumann



Public Domain by Alexis Naumann

[Chamaeleo dilepis](#) Leach, 1819 .

- **trapsuutjies** . "chameleon". Categories: *diere, reptiele*.



(CC) BY-SA © Alex Antener



(CC) BY-SA © unknown

Family: Colubridae

[Dispholidus typus](#) (Smith, 1828) .

- **boomslang** . Categories: *diere, reptiele*.



(CC) BY-SA © Rishaada

Family: Gekkonidae

[Pachydactylus turneri](#) Fischer, 1888 .

- **gekko** . "gecko". Categories: *diere*, *reptiele*.



(CC) BY-NC © Frank Teigler



(CC) BY-NC-SA © Bernard DUPONT



(CC) BY-NC-SA © James Anderson

Family: Varanidae

[Varanus niloticus](#) (Linnaeus, 1766) .

- **leguaan** . Categories: *diere*, *reptiele*.



(CC) BY © Simon J. Tonge



Public Domain by Alexis Naumann



(CC) BY-NC-SA © Description de l'Egypte, Book 34 (1826), Volume I - Planches : Histoire Naturelle.

Family: Viperidae

[Bitis arietans](#) (Merrem, 1820) .

- **pofadder** . Categories: *diere*, *reptiele*.



(CC) BY-NC-SA © Gerald and Buff Corsi



Public Domain by Alexis Naumann



Public Domain by Alexis Naumann

Family: other

Lacertidae .

- **akkedis** . Categories: *diere*, *reptiele*.



(CC) BY © Ralf Lotys (Sicherlich)



(CC) BY-SA ©



(CC) PUBLICDOMAIN © Omid Mozaffari

Order: Testudines

Family: Testudinidae

Geochelone pardalis (Bell, 1828) .

- **bergskilpad** . Categories: *diere*, *reptiele*.



Public Domain by Christfried Naumann



Public Domain by Christfried Naumann



Public Domain by Christfried Naumann

Psammobates oculiferus (Kuhl, 1820) .

- **Kalahari-skilpad** . Categories: *diere*, *reptiele*.



Public Domain by Christfried Naumann



Public Domain by Christfried Naumann

Kingdom: Fungi

Phylum: Ascomycota

Class: Pezizomycetes

Order: Pezizales

Family: Pezizaceae

[*Terfezia pfeilii*](#) (Henn.) Trappe & Kagan-Zur 2005 . Characteristics: desert truffle; fruit body 3-4cm in diameter; occurs 5-40cm under the surface of the sand; symbiotic relationships with certain plants. ([Van der Walt and le Riche 1999](#): 120)

- **Kalahari aartappel** . Categories: *swamme*.
- **wilde aartappel** . Categories: *swamme*.
- **ilhawas** . Plural *ilhawan*. Categories: *swamme*.
- **vet van die aarde** . Categories: *swamme*.
- **godekos** . Categories: *swamme*.

Phylum: Basidiomycota

Class: Agaricomycetes

Order: Agaricales

Family: Agaricaceae

[*Podaxis sp.*](#) . Characteristics: dispersed, solitary, cream-coloured fungus; 20 cm tall; cone-shaped fruit-bodies; inedible. ([Van der Walt and le Riche 1999](#): 123)

- **slangkop** . Categories: *swamme*.
- **vals wolhaarinkmus** . Categories: *swamme*.
- **wolfboegoe** . Categories: *swamme*.

Kingdom: Metazoa

Phylum: Chordata

Class: Mammalia

Order: Artiodactyla

Family: Bovidae

[*Damaliscus pygargus dorcas*](#) . Characteristics: herbivore; height: 90cm; the coat is very colourful, the top of the back and the neck are light brown getting darker on the flanks and legs; the belly, the lower legs and a patch around the crop are white; the face is brown with two large, white blazes which usually merge; both sexes have horns; it can be distinguished from the Blesbok by the white patch around the crop. Biotope: fynbos. ([Cillié 1997](#): 72)

- **bontebok** . Categories: *diere, soogdiere*.

Order: Primates

Family: Cercopithecidae

[*Papio ursinus*](#) (Kerr, 1792) . Characteristics: omnivore; body-length: 50-115 cm, tail-length: 50-70 cm; the fur is generally dark brown to grey on the back and lighter on the underparts and on the sides of the face; the face is long and downwards-sloping; the first part of the long tail is carried upwards while the rest hangs down;. Biotope: savanna, scrubforest, grassland, woodland. ([Cillié 1997](#): 204)

- **Kaapse bobbejaan** . Categories: *diere, soogdiere*.
- **bobbejaan** .



(CC) BY-SA © Graham



(CC) BY © Simon J. Tonge



PD ©

Kingdom: Plantae

Phylum: Magnoliophyta

Class: Magnoliopsida

Order: Lamiales

Family: Bignoniaceae

[Rhigozum trichotomum](#) Burch. . Characteristics: Shrub, 1-2m tall, egg-shaped leaves, solitary, white to salmon coloured flowers with a diameter up to 4cm, the fruit is a grey spindle-shaped capsule up to 10cm long. Biotope: dry river course, sandy soil, dune. ([Van der Walt and le Riche 1999](#): 72; [Van Rooyen et al. 2001](#): 56)

- **driedoring** . Categories: *plante*.



Public Domain by Gertrud Boden



Public Domain by Christfried Naumann



Public Domain by Christfried Naumann

Order: Malvales

Family: Thymelaeaceae

[Gnidia polycephala](#) (C.A. Mey.) Gilg ex Engl. . Characteristics: bush, up to 1,5 m tall, yellow flowers, almost leafless greenish branches, fluffy seeds dispersed by wind, contains poisonous substances when flowering. Biotope: sandy soil. ([Van der Walt and le Riche 1999](#): 78; [Van Rooyen et al. 2001](#): 72)

- **januariebos** . Categories: *plante*.



(CC) BY-NC-SA © MBG

Order: Zygophyllales

Family: Zygophyllaceae

Tribulus zeyheri . Characteristics: creeping growth, yellow flowers or white with a yellow centre, flower 4 cm in diameter, soft-haired leaves, woody, sharp, spiny fruits that can puncture animals' hoofs, bare feet and bicycle tyres. ([Van der Walt and le Riche 1999](#): 109)

- **dubbeltjie** . Categories: *plante*.
- **duwweltjie** . Categories: *plante*.
- **dubbeltjiedoring** . Categories: *plante*.
- **plattdubbeltjie** . Categories: *plante*.
- **volstruisdoring** . Categories: *plante*.



Public Domain by Christfried Naumann



(CC) BY-NC © Bart Wursten



Public Domain by Christfried Naumann

Phylum: Tracheophyta

Class: Liliopsida

Order: Asparagales

Family: Amaryllidaceae

Allium cepa L. .

- **ui** . Categories: *plante*.



(CC) BY-SA © Rainer Haessner



(CC) BY-SA © Donovan Govan



(CC) BY-SA © Christoph Waghubinger

Boophone disticha (L.f.) Herb. . Characteristics: deciduous, perennial; up to 30 cm; partially buried bulb; erect greyish-green leaves that form a characteristic fan-shaped crown; pink, sweet scented flowers in a spherical inflorescence. Biotope: sandy soil, dune. ([Van Rooyen et al. 2001](#): 120)

- **gifbol** . Categories: *plante*.
- **kopseerblom** . Categories: *plante*.
- **perdeskop** . Categories: *plante*.
- **seerooglelie** . Categories: *plante*.



Public Domain by Christfried Naumann



(CC) BY-SA © Hans Hillewaert



Public Domain by Daderot

Nerine laticoma (Ker Gawl.) T.Durand & Schinz . Characteristics: up to 50 cm tall, perennial, umbels of white flowers with a red stripe on each petal, leaves only appear when flowering, flowers poisonous for livestock, bulb used as medicine. Biotope: arid savanna, rivercourse. ([Van der Walt and le Riche 1999](#): 100; [Van Rooyen et al. 2001](#): 124)

- **seeroogbol** . Categories: *plante*.
- **gifbol** . Categories: *plante*.
- **jeukui** . Categories: *plante*.
- **misryblom** . Categories: *plante*.
- **vleilelie** . Categories: *plante*.



(CC) BY-NC © Darrel Plowes



(CC) BY-NC © Darrel Plowes



(CC) BY-NC © Darrel Plowes

[*Scadoxus puniceus*](#) (L.) Friis & Nordal .

- **rooikwas** . Categories: *plante*.



(CC) BY © Simon J. Tonge



Public Domain by Rotational



(CC) BY-NC © Paul Hubbard

Family: Asparagaceae

[*Asparagus nelsii*](#) Schinz . Characteristics: shrub, 1m high, spiny branches with greyish-green leaf-like structures (cladodes), white to pale-cream flowers, red berries. Biotope: grassland, sandy soil. ([Van Rooyen et al. 2001](#): 60)

- **sandveldkatbos** . Categories: *plante*.



Public Domain by Christfried Naumann



Public Domain by Christfried Naumann

[*Pseudogaltonia clavata*](#) (Baker ex Mast.) E.Phillips . Characteristics: perennial, bulbous plant; cream-brown bulb with a diameter up to 15 cm; large grey-green leaves; one single, multi-flowered inflorescence grows on a long stalk; the tubulus flowers are white with light-green stripes; fruit is a 3-chambered capsule. Biotope: dry river course, sandy soil. ([Van Rooyen et al. 2001](#): 118)

- **slangkop** . Categories: *plante*.
- **groenlelie** . Categories: *plante*.



Public Domain by Taa documentation team
(Boden/Güldemann/Naumann)



Public Domain by Taa documentation team
(Boden/Güldemann/Naumann)



(CC) MARK © J.D.Hooker (ed.)

Family: Xanthorrhoeaceae

[Aloe cryptopoda](#) Baker .

- **tweekleur-aalwyn** . Categories: *plante*.
- **geelaalwyn** . Categories: *plante*.



(CC) BY-SA © unknown (BotBln)

[Aloe zebrina](#) Baker .

- **aalwyn** . "aloe". Categories: *plante*.
- **aalwee** . "aloe". Categories: *plante*.



Public Domain by Gertrud Boden



Public Domain by Gertrud Boden



Public Domain by Gertrud Boden

Order: Poales

Family: Cyperaceae

[Cyperus usitatus](#) Burch. . Characteristics: sedge with many thin, linear leaves with a single peduncle ending in a tuft of compressed brown buds, bulb is edible. ([Van der Walt and le Riche 1999](#): 99)

- **Boesmanuintjie** . Categories: *plante*.

[Kyllinga alba](#) Nees . Characteristics: hairless sedge; up to 50 cm tall; leaves are bright green; the round, white inflorescences are attached to the erect flowering stems as terminal clusters; the spikelets are white or cinnamon coloured; the roots are aromatic. Biotope: sandy soil. ([Van Rooyen et al. 2001](#): 114)

- **witbiesie** . Categories: *plante*.



Public Domain by Christfried Naumann



Public Domain by Christfried Naumann



Public Domain by Christfried Naumann

Family: Poaceae

[Anthephora pubescens](#) Nees . Characteristics: perennial grass; up to 1,5 m tall; broad leaves with crinkled margins; inflorescence is a compact spike with hairy spikelets. Biotope: rocky area, sandy soil. ([Burke 2007](#): 98)

- **borseltjiegras** . Categories: *grasse, plante*.



(CC) BY-NC-SA © Missouri Botanical Garden

[Centropodia glauca](#) (Nees) Cope . Characteristics: grass, up to 1m tall, very hardy, almost succulent-like culms, short blue-green leaves. Biotope: sandy soil, dune. ([Van der Walt and le Riche 1999](#): 91; [Van Rooyen et al. 2001](#): 90)

- **ghagras** . Categories: *plante*.
- **ikagras** . Categories: *plante*.



(CC) BY-NC-SA © MBG

[Enneapogon cenchroides](#) (Licht.) C.E.Hubb. . Characteristics: hardy grass, 1m tall, leaves and culms covered with velvety hairs, the nodes are hairy, inflorescence is a hairy panicle, the spikelets typically have nine, hairy-fringed awns. Biotope: arid area, sandy soil. ([Van der Walt and le Riche 1999](#): 97; [Van Rooyen et al. 2001](#): 94)

- **vaalsuurgras** . Categories: *grasse, plante*.
- **negenaaldgras** . Categories: *grasse, plante*.



(CC) BY-NC-SA © Anthony Mendoza



(CC) BY-NC © Petra Ballings



(CC) BY-NC © Petra Ballings

[Eragrostis lehmanniana](#) Nees . Characteristics: perennial grass, abundant, conspicuous bend at the lowermost nodes of the culms, reproduces vegetatively through touching the ground with its nodes, slender but sturdy tufted grass, stick-like. ([Van Rooyen et al. 2001](#): 98)

- **knietjiesgras** . Categories: *grasse, plante*.
- **soetgras** . Categories: *grasse, plante*.



Public Domain by Christfried Naumann



(CC) BY-NC © Petra Ballings



Public Domain by Christfried Naumann

[Panicum coloratum](#) L. . Characteristics: grass with orange or purple coloured spikelets. ([Van der Walt and le Riche 1999](#): 90)

- **witbuffelsgras** . Categories: *plante*.
- **kleinbuffelsgras** . Categories: *plante*.
- **bont Panicum** . Categories: *plante*.



Public Domain by



(CC) BY © Forest and Kim Starr



(CC) BY © Forest and Kim Starr

[Panicum maximum](#) Jacq. .

- **blousaad soetgras** . Categories: *grasse, plante*.



(CC) BY © Forest & Kim Starr



(CC) BY-SA © Tau'olunga



(CC) MARK © USDA NRCS PLANTS Database

[Schmidtia kalahariensis](#) . Characteristics: Kalahari's most prominent annual grass, up to 1 m tall, produces an acidic secretion with strong smell, hardy grass with the tendency to become almost biennial in years of good rainfall, culms grow erect from a bent base, culms, dull striped sheaths and leaf blades densely haired, glands at the tips of the hairs that secrete a sticky organic acid (in maturity) that has devastating effects on humans and animals. ([Van der Walt and le Riche 1999](#): 95)

- **Kalahari suurgras** . Categories: *grasse, plante*.
- **suurgras** . Categories: *grasse, plante*.
- **vyfnaaldgras** . Categories: *grasse, plante*.



Public Domain by Christfried Naumann



Public Domain by Christfried Naumann



Public Domain by Christfried Naumann

Stipagrostis amabilis (Schweick.) De Winter . Characteristics: perennial large shrub-like grass, up to 2 m tall, colonizer of unstable dune tops, expanded rootstock system, tufted growth. ([Van der Walt and le Riche 1999](#): 91)

- **duinsteekwiet** . Categories: *grasse, plante*.
- **steekwiet** . Categories: *grasse, plante*.
- **duinekweek** . Categories: *grasse, plante*.
- **n!Tka** . Categories: *grasse, plante*.

Stipagrostis ciliata (Desf.) De Winter . Characteristics: perennial tufted grass, up to 1 m tall, nodes on the culms with characteristic white rings of white hair, large open panicles with long brownish awns. ([Van der Walt and le Riche 1999](#): 92)

- **langbeenboesmangras** . Categories: *grasse, plante*.
- **growwe twaa** . Categories: *grasse, plante*.



(CC) BY-NC-SA © Delile, A.R., 1813. Description de l'Égypte



(CC) BY-NC © Royal Botanic Garden & Edinburgh

Stipagrostis obtusa (Delile) Nees . Characteristics: small perennial tufted grass, dense basal leaf covering, up to 60 cm tall, pioneer and climax grass, curled blue-green leaves, one of the most important grazing resources. ([Van der Walt and le Riche 1999](#): 93)

- **kortbeenboesmangras** . Categories: *grasse, plante*.
- **fyn twaa** . Categories: *grasse, plante*.



(CC) BY-SA © JonRichfield



(CC) BY-SA © JonRichfield



(CC) BY-NC-SA © Delile, A.R., 1813. Description de l'Egypte

Stipagrostis uniplumis (Licht.) De Winter . Characteristics: perennial grass, soft feather-shaped hairy awns, tufts of hair at the base of the awns and at the nodes, lifespan of about five years, luxuriant seed production, high grazing value. ([Van der Walt and le Riche 1999](#): 94)

- **blinkaar** . Categories: *grasse, plante*.
- **pluimgras** . Categories: *grasse, plante*.



(CC) BY-NC © Petra Ballings



(CC) BY-NC © Petra Ballings



(CC) BY-NC © Royal Botanic Garden Edinburgh

Themeda triandra Forssk. .

- **rooigras** . Categories: *grasse, plante*.



(CC) BY-SA © Peripitus



(CC) BY © John Tann



(CC) BY © Biodiversity Heritage Library

Zea mays L. .

- **mielie** . Categories: *plante*.



(CC) BY-SA ©



(CC) BY ©



(CC) BY-SA ©

Family: Typhaceae

Typha capensis (Rohrb.) N.E.Br. .

- **papkuil** . Categories: *plante*.
- **matjiesriet** . Categories: *plante*.
- **palmiet** . Categories: *plante*.



(CC) BY-NC © Bart Wursten



(CC) BY-NC © Bart Wursten



Public Domain by Andrew Massyn

Class: Magnoliopsida

Order: Apiales

Family: Apiaceae

[Pappea capensis](#) Eckl. & Zeyh. .

- doppruim . Categories: *bome, plante.*



(CC) BY-SA © NJR ZA



(CC) BY-NC © Mark Hyde



(CC) BY-NC © Rob Burrett

Family: Araliaceae

[Cussonia paniculata](#) Eckl. & Zeyh. .

- bergkiepersol . Categories: *bome, plante.*



(CC) BY-SA © Frank Vincentz



(CC) BY-SA ©



(CC) BY-SA ©

Order: Asterales

Family: Asteraceae

[Dicoma anomala](#) .

- maagbitterwortel . Categories: *plante.*

- **kalwerbossie** . Categories: *plante*.
- **koorsbossie** . Categories: *plante*.
- **gryshout** . Categories: *plante*.
- **maagbossie** . Categories: *plante*.



(CC) BY-SA © JMK

[Dicoma capensis](#) . Characteristics: creeping herb; multiple stems grow from a perennial rootstock; hairy leaves; mauve flowerheads. Biotope: dry river course, sandy soil, dune. ([Van Rooyen et al. 2001](#): 188)

- **koorsbossie** . Categories: *plante*.
- **wilde karmedik** . Categories: *plante*.



Public Domain by Christfried Naumann



Public Domain by Christfried Naumann

[Ericephalus microphyllus var. pubescens](#) . Characteristics: shrub, up to 1m tall, very small reddish flowers, white seeds puffs which cover the ground like snow, small leaves with strong aromatic fragrance. ([Van der Walt and le Riche 1999](#): 83)

- **kapokbos** . Categories: *plante*.

[Geigeria pectidea](#) . Characteristics: small bush, 10 – 30cm tall, flowers grouped in small compact heads, outer flowers unisexual (female) and inner flowers bisexual, grows in riverbeds, causes paralysis of the oesophagus, pneumonia and vomiting when eaten by sheep. Biotope: river course. ([Van der Walt and le Riche 1999](#): 84; [Burke 2007](#): 92)

- **riviervermeerbossie** . Categories: *plante*.

[Helichrysum argyrosphaerum](#) . Characteristics: short runners rich in flowers, flowers mostly yellow with a pink edge or white becoming gradually pink towards the centre, hairy spoon-shaped leaves. Biotope: sandy soil, dune. ([Van der Walt and le Riche 1999](#): 116; [Van Rooyen et al. 2001](#): 192)

- **gansogies** . Categories: *plante*.
- **poprosies** . Categories: *plante*.



(CC) BY-NC © Bart Würsten

[Pechuel-loeschea leubnitziae](#) . Characteristics: up to 2 m tall, grey-green shrub, bitter aroma of stems and leaves, small purple flowers. ([Van der Walt and le Riche 1999](#): 76)

- **stinkbitterbos** . Categories: *plante*.



(CC) BY-NC © Christian Bravard



(CC) BY-NC © Christian Bravard



(CC) BY-NC © Christian Bravard

[Pentzia incana](#) . Characteristics: 0,3 m tall, grey-green shrub, yellow flowers, seeds dispersed by wind, vegetative reproduction through anchors, leaves are sticky and have fragrant oils. ([Van der Walt and le Riche 1999](#): 81)

- **ankerkaroo** . Categories: *plante*.
- **skaapbossie** . Categories: *plante*.
- **skaapkaroo** . Categories: *plante*.
- **soetkaroo** . Categories: *plante*.
- **goedkaroo** . Categories: *plante*.



(CC) BY-NC-SA © Anthony Mendoza



(CC) BY-NC-SA © Anthony Mendoza



(CC) BY-NC-SA © Anthony Mendoza

[*Platycarpha carlinoides*](#) . Characteristics: plant with cone-shaped tap root, ring of basal incised leaves, two or three floral whorls with bright purple flowers in the middle, grows in riverbeds of the Kalahari. Biotope: river course. ([Van der Walt and le Riche 1999](#): 106; [Van Rooyen et al. 2001](#): 194)

- **wilderaap** . Categories: *plante*.
- **rivierkool** . Categories: *plante*.

[*Tarchonanthus camphoratus*](#) . Characteristics: shrub or tree, 1-8m tall depending on climate, greyish-green, oblongate leaves with whitish felt, creamy-white flowerheads in terminal panicles, the small fruit is covered with white hairs. Biotope: savanna, grassland, woodland, sandy soil, stony soil. ([Van Rooyen et al. 2001](#): 58)

- **wildekanferbos** . Categories: *plante*.



Public Domain by Abu Shawka



(CC) BY-SA © Paul venter



(CC) BY-SA © JMK

Order: Caryophyllales

Family: Amaranthaceae

[*Achyranthes aspera*](#) L. .

- **grootklits** . Categories: *plante*.
- **langklitskafboom** . Categories: *plante*.



(CC) BY-SA © Frank Vincentz



(CC) BY-SA © Frank Vincentz

[Hermbstaedia fleckii](#) (Schinz) Baker & C. B. Clarke . Characteristics: annual, erect herb; up to 60 cm tall; linear, hairy leaves; the inflorescence is a terminal spike with a hairy axis and white to magenta flowers. Biotope: savanna, sandy soil. ([Van Rooyen et al. 2001](#): 158)

- **katstert** . Categories: *plante*.



Public Domain by Christfried Naumann



Public Domain by Christfried Naumann



Public Domain by Christfried Naumann

[Hermbstaedia linearis](#) Schinz . Characteristics: annual herb, up to 40 cm tall, perennial rootstock, small purple flowers in a terminal spike-shaped inflorescence. ([Van der Walt and le Riche 1999](#): 116)

- **katstert** . Categories: *plante*.
- **rooiaarbossie** . Categories: *plante*.



(CC) BY-NC-SA © Bernard DUPONT

Family: Caryophyllaceae

Pollichia campestris Ait. . Characteristics: herb or shrublet; up to 40 cm tall; small, strap-shaped leaves arranged in whorls; very small yellow leaves in axillary clusters; fruit is a white berry;. Biotope: sandy soil. ([Van Rooyen et al. 2001](#): 162)

- **teesuiker** . Categories: *plante*.



(CC) BY-NC © Bart Wursten



(CC) BY-NC © Bart Wursten



(CC) BY-NC © Bart Wursten

Family: Talinaceae

Talinum crispatum Dinter . Characteristics: herb; 5-15 cm tall; erect and spreading, pinkish stems; large roots; succulent, linear leaves; bright yellow flowers; seeds are small and shining black. Biotope: arid savanna, sandy soil, dune. ([Van Rooyen et al. 2001](#): 130)

- **wilde vygie** . Categories: *plante*.



Public Domain by Christfried Naumann



Public Domain by Christfried Naumann



Public Domain by Christfried Naumann

Order: Cucurbitales

Family: Cucurbitaceae

Citrullus lanatus (Thunb.) Matsumura & Nakai . Characteristics: annual, creeping herb; the hairy leaves are divided into 3-5 lobes; male and female flowers grow on the same plant and are yellow; the fruit is round with a diameter of 15-20 cm and a yellow and green surface. Biotope: sandy soil, dune. ([Van der Walt and le Riche 1999](#): 110; [Van Rooyen et al. 2001](#): 148)

- **tsamma** . Categories: *plante*.
- **karkoer** . Categories: *plante*.
- **bitterwaatlemoen** . Categories: *plante*.
- **wildewaatlemoen** . Categories: *plante*.
- **bitterboela** . Categories: *plante*.
- **bitterkalbas** . Categories: *plante*.
- **N!Ham** . Categories: *plante*.
- **waatlemoen** . Categories: *plante*.



(CC) BY © Jeff Heath and the Dogon and Bangime
Languages Project



Public Domain by Christfried Naumann

Kedrostis hirtella (Forssk. ex J. F. Gmel.) C. Jeffrey .

- **bobbejaankomkommer** . Categories: *plante*.

Momordica balsamina L. . Characteristics: perennial climber; leaves are divided into 5-7 lobes, the margins toothed; the flowers are white to yellow with fused petals; the egg-shaped fruit is orange to red when ripe and covered with spines; the plant emits an unpleasant smell when bruised. Biotope: savanna, sandy soil. ([Van Rooyen et al. 2001](#): 152)

- **laloentjie** . Categories: *plante*.



(CC) BY © Jeff Heath and the Dogon and Bangime
Languages Project



(CC) BY-SA © H. Zell



(CC) BY © Jeff Heath and the Dogon and Bangime
Languages Project

Order: Ericales

Family: Ebenaceae

[Diospyros lycioides](#) Desf. .

- **bloubos** . Categories: *plante*.



(CC) BY-NC © Petra Ballings



(CC) BY-NC-SA © Research Institute Senckenberg



(CC) BY-NC © Mark Hyde

[Euclea crispa](#) (Thunb.) Gürke .

- **bloughwarrie** . Categories: *plante*.



(CC) BY-SA ©



(CC) BY-SA ©



(CC) BY-SA ©

Family: Sapotaceae

[Englerophytum magalimontanum](#) (Sond.) T.D.Penn. .

- **stamvrug** . Categories: *bome, plante*.



(CC) BY-NC © Bart Wursten



(CC) BY-NC-SA © Research Institute Senckenberg



(CC) BY-NC © Bart Wursten

[Mimusops zeyheri](#) Sond. .

- **moepel** . Categories: *bome, plante*.



(CC) BY-SA ©



(CC) BY-SA © original uploader|Paul venter|wikipedia|en



(CC) BY-NC-SA © Research Institute Senckenberg

Order: Fabales

Family: Fabaceae

[*Acacia ataxacantha*](#) DC. .

- **vlamdoring** . Categories: *bome, plante*.
- **rank wag-'n-bietjie** . Categories: *bome, plante*.



(CC) BY-SA © JMK



(CC) BY-SA © JMK



(CC) BY-SA © JMK

[*Acacia caffra*](#) (Thunb.)Willd. .

- **gewone haakdoring** . Categories: *bome, plante*.
- **katdoring** . Categories: *bome, plante*.
- **wag-'n-bietjie** . Categories: *bome, plante*.



(CC) BY-SA © JMK



(CC) BY-SA © Paul Venter



(CC) BY-SA © Paul Venter

[*Acacia erioloba*](#) E.Mey. . Characteristics: 4 - 12 m tall, yellow flowers, woody pods 130 mm long, grey-green leaves 100 mm, leaflets 13 mm, straight thorns 60 mm, rough fissured bark. Biotope: arid savanna, grassland, dry river course. ([Carruthers \(eds.\) 2000](#): 250; [Van der Walt and le Riche 1999](#): 39; [Van Rooyen et al. 2001](#): 26)

- **kameeldoring** [k^ha'miəldɔ:rɪŋ] . "Camel thorn (acacia)". Lit. "camel thorn". [name.usage]. Plural *kameeldorings*. derived from kameelperd (doring) 'giraffe (thorn)'. Categories: *bome, plante*. no. Uses: construction, fuel, shade. important tree (largest plant in the central Kalahari).
- **kameeldoringboom** . Categories: *bome, plante*.



Public Domain by Christfried Naumann



Public Domain by Christfried Naumann

[Acacia haematoxylon](#) Willd. . Characteristics: up to 8 m tall, yellow flowers, leaves and pods with fine grey hairs. Biotope: desert, semi-desert, sandy soil, dune. ([Van der Walt and le Riche 1999](#): 47; [Van Rooyen et al. 2001](#): 28)

- **vaalkamel** . Categories: *bome, plante*.
- **basterkamel** . Categories: *bome, plante*.
- **haaikoos** . Categories: *bome, plante*.
- **n!Haboom** . Categories: *bome, plante*.
- **vaalkameeldoring** . Categories: *bome, plante*.

[Acacia hebeclada hebeclada](#) . Characteristics: 2 – 6 m tall, white flowers, hairy leaves and pods. Biotope: dry savanna, grassland, dry river course, dune. ([Van der Walt and le Riche 1999](#): 51; [Van Rooyen et al. 2001](#): 42)

- **trassie bos** . Categories: *plante*.
- **terassiebos** . Categories: *plante*.
- **kersdoring** . Categories: *plante*.
- **sikiboontjie** . Categories: *plante*.
- **volstruisbos** . Categories: *plante*.
- **trassiedoring** . Categories: *plante*.



Public Domain by Christfried Naumann



Public Domain by Christfried Naumann



Public Domain by Christfried Naumann

[Acacia karroo](#) Hayne . Characteristics: 3 - 6 m tall, yellow flowers. Biotope: savanna, arid savanna, grassland, river course. ([Carruthers \(eds.\) 2000](#): 250; [Van Rooyen et al. 2001](#): 30)

- **soetdoring** . Categories: *bome, plante*.
- **soetdoorn** . Categories: *bome, plante*.



(CC) BY-SA © Kurt Stueber



(CC) BY-SA © Sten Porse

Acacia luederitzii Engl. . Characteristics: up to 8 m tall, creamy-white flowers. Biotope: shrubland, grassland. ([Van der Walt and le Riche 1999](#): 49; [Van Rooyen et al. 2001](#): 30)

- **basterhaak-en-steek** . Categories: *bome, plante*.
- **swartbas** . Categories: *bome, plante*.
- **rooihaak** . Categories: *bome, plante*.
- **basterkamel** . Categories: *bome, plante*.
- **ysterhout** . Categories: *bome, plante*.
- **buikdoring** . Categories: *bome, plante*.



Public Domain by Christfried Naumann



Public Domain by Christfried Naumann



Public Domain by Christfried Naumann

Acacia mellifera (M.Vahl)Benth. . Characteristics: shrub, white flowers, small feather-shaped round leaves, small blackish hook thorns in pairs, very thorny. Biotope: dry savanna, grassland. ([Van der Walt and le Riche 1999](#): 64; [Van Rooyen et al. 2001](#): 42)

- **swarthaak** . Categories: *plante*.
- **gnoibos** . Categories: *plante*.
- **blouhaak** . Categories: *plante*.
- **hakiesdoring** . Categories: *plante*.



Public Domain by Christfried Naumann



Public Domain by Christfried Naumann



Public Domain by Christfried Naumann

[Acacia nigrescens](#) Oliv. .

- **knoppiesdoring** . Categories: *bome*, *plante*.



(CC) BY © Steven Haw

[Acacia nilotica subsp. kraussiana](#) (Benth.)Brenan .

- **lekkerruikpeul** . Categories: *bome*, *plante*.



(CC) BY-SA © JMK



(CC) BY-SA © JMK

[Acacia robusta](#) Burch. .

- **enkeldoring** . Categories: *bome*, *plante*.



(CC) BY-SA © JMK



(CC) BY-NC © Bart Wursten



(CC) BY-SA © JMK

[Acacia tortilis subsp. heteracantha](#) (Burch.)Brenan .

- **haak-en-steek** . Categories: *bome, plante*.
- **sambreelboom** . Categories: *bome, plante*.



(CC) BY-NC © Bart Wursten



(CC) BY-NC © Bart Wursten



(CC) BY-NC © Bart Wursten

[Albizia anthelmintica](#) Brongn. . Characteristics: up to 6 m tall, yellow or creamy-white flowers, feathery leaves, no thorns, large light brown pods. Biotope: savannasandy soil, dune. ([Van der Walt and le Riche 1999](#): 52; [Van Rooyen et al. 2001](#): 32)

- **wurbasvalsdoring** . Categories: *bome, plante*.
- **bonthout** . Categories: *bome, plante*.
- **oumaboom** . Categories: *bome, plante*.

[Burkea africana](#) Hook. .

- **wildesering** . Categories: *plante*.



Public Domain by unknown (Rotational)



Public Domain by unknown (Rotational)

[*Crotalaria orientalis*](#) Verd. . Characteristics: shrub, 1m tall, straight stems, small leaves, whitish to yellow flowers (similar to pea-flower), the fruit is an inflated pod. Biotope: sandy soil, dune. ([Van Rooyen et al. 2001](#): 66)

- **besembossie** . Categories: *plante*.



Public Domain by Christfried Naumann



Public Domain by Christfried Naumann



Public Domain by Christfried Naumann

[*Crotalaria spartioides*](#) DC. . Characteristics: many branched shrub, bottle-green, only lives for 2-3 years, large bright yellow flowers, moderately poisonous. Biotope: sandy soil, dune. ([Van der Walt and le Riche 1999](#): 78)

- **besembossie** . Categories: *plante*.
- **duinebos** . Categories: *plante*.



Public Domain by Taa documentation team

(Boden/Güldemann/Naumann)

[*Dichrostachys cinerea*](#) (L.)Wight & Arn. . Characteristics: shrub or small tree; 1-3m tall, flowers in an elongated drooping spike, composed of two sections: a pink tuft of sterile flowers and below a section of fertile yellow flowers; the pods are curly and twisted;. Biotope: grassland, sandy soil. ([Van Rooyen et al. 2001](#): 44)

- **sekelbos** . Categories: *plante*.



(CC) BY © Jeff Heath and the Dogon and Bangime
Languages Project



(CC) BY © Jeff Heath and the Dogon and Bangime
Languages Project



(CC) BY © Jeff Heath and the Dogon and Bangime
Languages Project

[Elephantorrhiza elephantina](#) (Burch.)Skeels . Characteristics: small shrub, up to 60cm tall, extended underground tuberous root system, annual stems, creamy-yellow racemes, turning brown with age, woody flat pods, roots edible. Biotope: arid savanna, grassland, sandy soil, dune. ([Van der Walt and le Riche 1999](#): 101; [Van Rooyen et al. 2001](#): 68)

- **elandsboontjie** . Categories: *plante*.
- **leerbossie** . Categories: *plante*.
- **bas** . Categories: *plante*.
- **elandswortel** . Categories: *plante*.
- **olifantswortel** . Categories: *plante*.
- **looiersbossie** . Categories: *plante*.



Public Domain by Christfried Naumann



Public Domain by Christfried Naumann



(CC) BY-NC © Bart Wursten

[Indigofera alternans](#) DC. . Characteristics: plant with small racemes of purple-red flowers, hairy green leaves, creeper, annual, small pea-like seeds. Biotope: sandy soil. ([Van der Walt and le Riche 1999](#): 106; [Van Rooyen et al. 2001](#): 132)

- **springbokopslag** . Categories: *plante*.
- **vaalopslag** . Categories: *plante*.
- **skaapertjie** . Categories: *plante*.

Lebeckia linearifolia E.Mey. . Characteristics: 2m tall shrub, yellow flowers, blue-grey foliage, linear leaves divided in three, pods. Biotope: dry river course, dune. ([Van der Walt and le Riche 1999](#): 69; [Van Rooyen et al. 2001](#): 46)

- **bloubos** . Categories: *plante*.
- **ertjiebos** . Categories: *plante*.



(CC) BY-NC-SA © MBG

Mundulea sericea (Willd.)A.Chev. .

- **kurkbos** . Categories: *plante*.
- **blou-ertjieboom** . Categories: *plante*.
- **olifantshout** . Categories: *plante*.
- **visboontjie** . Categories: *plante*.
- **visgif** . Categories: *plante*.
- **mangaanbos** . Categories: *plante*.



(CC) BY © Jeff Heath and the Dogon and Bangime
Languages Project



(CC) BY-NC © Bart Wursten



(CC) BY © Jeff Heath and the Dogon and Bangime
Languages Project

Parkinsonia africana Sond. . Characteristics: 3 m tall, yellow flowers, green bark, thin leaves, short thickish thorns, 90 mm long thin red-brown pods. Biotope: arid area, river course. ([Van Rooyen et al. 2001](#): 32)

- **wilde-groenhaarboom** . Categories: *bome, plante*.
- **lemoending** . Categories: *bome, plante*.
- **groenhaar-doring** . Categories: *bome, plante*.
- **lemoenboom** . Categories: *bome, plante*.

- **groenhaarboom** . Categories: *bome, plante*.
- **wildelemoenhout** . Categories: *bome, plante*.

Peltophorum africanum Sond. .

- **huilboom** . Categories: *bome, plante*.



(CC) BY-SA © JMK



(CC) BY-NC-SA © Bernard DUPONT



(CC) BY-NC-SA © Research Institute Senckenberg

Senna italica Mill. . Characteristics: perennial herb; up to 40 cm tall; hairy stems rise from a black, woody rootstock; pinnately compound leaves; leaflets with rounded tips; yellow flowers; fruit is a large and flat pod. Biotope: savanna, grassland. ([Van der Walt and le Riche 1999](#): 107; [Van Rooyen et al. 2001](#): 134)

- **swartstorm** . Categories: *plante*.
- **swartstormbossie** . Categories: *plante*.
- **elandsertjie** . Categories: *plante*.



(CC) BY-NC © Bart Wursten



Public Domain by Gertrud Boden



(CC) BY-NC © Bart Wursten

Tylosema esculentum (Burch.)A.Schreib. . Characteristics: shrub or small tree, up to 6m tall, large egg-shaped leaves, covered with short, soft, tawny hairs, greenish-white to yellowish flowers in axillary clusters, fruit is a yellow to brown berry. Biotope: savanna, sandy soil. ([Van der Walt and le Riche 1999](#): 107; [Van Rooyen et al. 2001](#): 136)

- **maramaboontjie** . Categories: *plante*.
- **braaiboontjie** . Categories: *plante*.
- **maramaboontjie** . Categories: *plante*.
- **gemsbokboontjie** . Categories: *plante*.

- **N!Gham** . Categories: *plante*.
- **tamani** . Categories: *plante*.
- **sandveldneut** . Categories: *plante*.



Public Domain by Gertrud Boden



(CC) MARK © Tracey Slotta



Public Domain by Gertrud Boden

Order: Gentianales

Family: Apocynaceae

Gomphocarpus fruticosus . Characteristics: herb or shrublet; up to 1,5 m tall; produces milky, poisonous latex; lance-shaped leaves; up to 10 yellow flowers in an axillary umbel; fruit is a heart-shaped, hairy follicle; the seeds have a parachute of long hairs. Biotope: dry river course. ([Van Rooyen et al. 2001](#): 180)

- **gansies** . Categories: *plante*.
- **blaasoppies** . Categories: *plante*.
- **kapokbossie** . Categories: *plante*.
- **tontelbos** . Categories: *plante*.



Public Domain by Christfried Naumann



Public Domain by Christfried Naumann



Public Domain by Christfried Naumann

Hoodia gordonii (Masson) Sweet ex Decne. . Characteristics: succulent, 0,5 – 1 m tall, large dusty pink flowers, greyish green or greyish brown colour of the plant, plant is said to suppress the appetite (not scientifically proven). ([Van der Walt and le Riche 1999](#): 85)

- **wildeghaap** . Categories: *plante*.
- **bobbejaanghaap** . Categories: *plante*.

- **ghaap** . Categories: *plante*.



(CC) BY-SA © Winfried Bruenken (Amrum)



(CC) BY-SA © Winfried Bruenken (Amrum)



(CC) BY-SA © Winfried Bruenken (Amrum)

Pergularia daemia . Characteristics: perennial climber; hairy, hand-shaped leaves; small, cream-coloured flowers with fused petals; the fruit is bright red and contains many seeds. Biotope: savanna, dry river course, sandy soil. ([Van Rooyen et al. 2001](#): 150)

- **kgaba** . Categories: *plante*.
- **bobbejaankambro** . Categories: *plante*.



(CC) BY-NC © David Gwynne-Evans



(CC) BY-NC © David Gwynne-Evans



(CC) BY-NC © Bart Wursten

Family: Rubiaceae

Vangueria infausta Burch. . Characteristics: shrub or small tree, up to 6m tall, large egg-shaped leaves, covered with short, soft, tawny hairs, greenish-white to yellowish flowers in axillary clusters, fruit is a yellow to brown berry. Biotope: savanna, grassland, rocky area, dune. ([Van Rooyen et al. 2001](#): 56)

- **wilde mispel** . Categories: *plante*.



(CC) BY-SA ©



(CC) BY-NC © Bart Wursten



(CC) BY-SA © Marco Schmidt

Order: Lamiales

Family: Acanthaceae

[Monechma foliosum](#) (C. B. Cl.) comb. ined. . ([Van der Walt and le Riche 1999](#): 80)

- **perdebos** . Categories: *plante*.

[Monechma genistifolium](#) Engl. . Characteristics: perennial shrub, 60cm tall, whitish branches, opposite, elliptical leaves, the single snapdragon-like flowers are whitish with purple veining, fruit is a capsule with round, black seeds. Biotope: dry river course, sandy soil, dune. ([Van Rooyen et al. 2001](#): 82)

- **perdebos** . Categories: *plante*.
- **perdebos** . Categories: *plante*.



Public Domain by Christfried Naumann



Public Domain by Christfried Naumann



Public Domain by Christfried Naumann

[Monechma incanum](#) (Nees) T. Anders. . Characteristics: 0,5 m tall, blue-grey coloured hairy, leafy bush, woody, sparse white flowers, grows in dune valleys or near sand pans and saline depressions. ([Van Rooyen et al. 2001](#): 82)

- **netvetbossie** . Categories: *plante*.
- **blouganna** . Categories: *plante*.
- **skaapganna** . Categories: *plante*.

- **bloubossie** . Categories: *plante*.
- **veebreker** . Categories: *plante*.



Public Domain by Christfried Naumann



Public Domain by Christfried Naumann



Public Domain by Christfried Naumann

Family: Pedaliaceae

Harpagophytum procumbens . Characteristics: perennial herb, purple flowers with yellow inside throat, fruit capsules with long bent hooks, woody creepers up to 1,5 m long, root tubers used as medicine. Biotope: sandy soil. ([Van der Walt and le Riche 1999](#): 103; [Van Rooyen et al. 2001](#): 144)

- **duiwelsklou** . Categories: *plante*.
- **ghamaghoe** . Categories: *plante*.
- **kludoring** . Categories: *plante*.
- **duiwelsdoring** . Categories: *plante*.
- **kommaku** . Categories: *plante*.
- **leeudoring** . Categories: *plante*.
- **Kalahari skaapklou** . Categories: *plante*.
- **skerpioendubbeltjie** . Categories: *plante*.
- **veldspinnekop** . Categories: *plante*.



Public Domain by Christfried Naumann



Public Domain by Christfried Naumann



Public Domain by Christfried Naumann

Family: Scrophulariaceae

Aptosimum albomarginatum Marl. et Engl. . Biotope: dry river course, sandy soil. ([Van Rooyen et al. 2001](#): 78)

- **koegab** . Categories: *plante*.



Public Domain by Christfried Naumann



Public Domain by Christfried Naumann



Public Domain by Christfried Naumann

Buddleja saligna Willd. .

- **witolien** . Categories: *plante*.



Public Domain by unknown (Rotational)

Order: Malpighiales

Family: Euphorbiaceae

Spirostachys africana Sond. .

- **tambotie** . Categories: *bome*, *plante*.



(CC) BY ©



Public Domain by Paul Venter



(CC) BY-NC © Bart Wursten

Order: Malvales

Family: Malvaceae

[Adansonia digitata](#) L. .

- **kremetart** . Categories: *bome, plante*.
- **kremetartboom** . Categories: *bome, plante*.
- **Afrikaanse kremetart** . Categories: *bome, plante*.
- **baobab** . Categories: *bome, plante*.

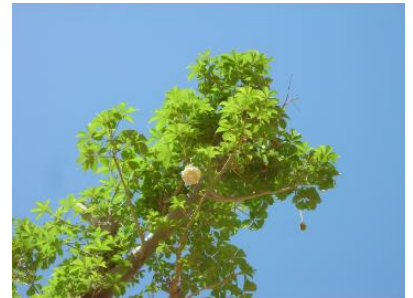


Public Domain by unknown



(CC) BY © Jeff Heath and the Dogon and Bangime

Languages Project



(CC) BY © Jeff Heath and the Dogon and Bangime

Languages Project

[Grewia flava](#) DC. . Characteristics: slightly hairy shrub, up to 3m tall, pale green leaves, yellow flowers, red-brown round fruits 8 mm in diameter. Biotope: dry savanna, dry river courses, sandy soil. ([Van der Walt and le Riche 1999](#): 70; [Van Rooyen et al. 2001](#): 48)

- **fluweelrosyntjebos** . Categories: *plante*.
- **wilderosyntjie** . Categories: *plante*.
- **n!oubessie** . Categories: *plante*.
- **bessiebos** . Categories: *plante*.



Public Domain by Christfried Naumann



Public Domain by Christfried Naumann



(CC) BY-SA ©

[Grewia occidentalis](#) L. .

- **kruisbessie** . Categories: *plante*.



(CC) BY © Forest & Kim Starr



(CC) BY-SA © Marco Schmidt



(CC) BY-NC-SA © Missouri BG!

[Grewia retinervis](#) Burret . Characteristics: bush, 2m tall, elliptic leaves with serrate margins, bright yellow flowers, reddish-brown, spherical fruit (diameter: 8mm). Biotope: savanna, woodland. ([Van Rooyen et al. 2001](#): 48)

- **Kalahari skurwe rosytjie** . Categories: *plante*.



Public Domain by Gertrud Boden



Public Domain by Gertrud Boden

[Radyera urens](#) (L. f.) Bullock . Characteristics: pumpkin-like herb, lobed, hairy, grey-green leaves with finely pleated edges, runners up to 1,2 m long, hairs cause slight burning sensation on contact, bad smell when dry, small red pumpkin-like flowers, cucumber-like fruit. Biotope: dry river course, river course. ([Van der Walt and le Riche 1999](#): 103)

- **wildepampoen** . Categories: *plante*.
- **pampoenbossie** . Categories: *plante*.
- **wildekalabas** . Categories: *plante*.

Family: Sterculiaceae

[Dombeya rotundifolia](#) (Hochst.) Planch. .

- **drolpeer** . Categories: *bome, plante*.



(CC) BY-SA © unknown



(CC) BY-SA © unknown



(CC) BY-SA © unknown

Family: Thymelaeaceae

[Gnidia capitata](#) L. f. .

- gifbossie . Categories: *plante*.



(CC) BY-NC-SA © MBG



(CC) BY-NC-SA © MBG



(CC) BY-NC-SA © MBG

Order: Myrtales

Family: Combretaceae

[Terminalia sericea](#) Burch. ex DC. . Characteristics: 4-8m tall, cream to pale yellow flowers, silvery-grey leaves. Biotope: savanna, sandy soil, dune. ([Carruthers \(eds.\) 2000](#): 270; [Van der Walt and le Riche 1999](#): 60; [Van Rooyen et al. 2001](#): 36)

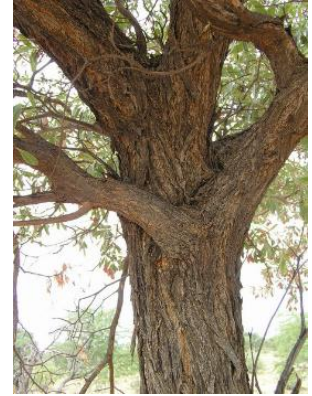
- vaalboom . Categories: *bome, plante*.
- sandgeelhout . Categories: *bome, plante*.
- sandvaalbos . Categories: *bome, plante*.
- silwerboom . Categories: *bome, plante*.



Public Domain by Christfried Naumann



Public Domain by Taa documentation team
(Boden/Güldemann/Naumann)



Public Domain by Christfried Naumann

Order: Oxalidales

Family: Oxalidaceae

Oxalis lawsonii F. Bolus . Characteristics: annual or perennial herb; purple-pink flowers; juicy, thick tap root; tubers along the lateral root; likes water. ([Van der Walt and le Riche 1999](#): 117)

- **beessuring** . Categories: *plante*.
- **skaapsuring** . Categories: *plante*.
- **vlaktesuring** . Categories: *plante*.

Order: Ranunculales

Family: Papaveraceae

Argemone ochroleuca . Characteristics: coarse annual herb, up to 60cm tall, long sturdy tap root, grey-green, deeply lobed leaves with tips ending in a thorn, light yellow to cream-coloured flowers, seeds can last up to 20 years, grows in riverbeds. Biotope: dry river course. ([Van der Walt and le Riche 1999](#): 100; [Van Rooyen et al. 2001](#): 162)

- **bloudissel** . Categories: *plante*.
- **steekbossie** . Categories: *plante*.
- **blouduivel** . Categories: *plante*.
- **Mexikaanse papawer** . Categories: *plante*.



(CC) BY-NC © inaturalist



(CC) BY-NC © inaturalist



(CC) MARK © Gareth Bain at en.wikipedia. Original uploader was Garble at en.wikipedia

Order: Sapindales

Family: Anacardiaceae

[Searsia lancea](#) (L. f.) F. A. Barkley .

- **karee** . Categories: *bome, plante*.
- **rooikaree** . Categories: *bome, plante*.



(CC) BY © Bri Weldon



(CC) BY © Tatiana Gerus



(CC) BY © Bri Weldon

Order: Saxifragales

Family: Crassulaceae

[Kalanchoe rotundifolia](#) (Haw.) Haw. .

- **nentabos** . Categories: *plante*.
- **plakkie** . Categories: *plante*.



(CC) BY-NC © Bart Wursten



(CC) BY-SA © JMK



(CC) BY-NC © Royal Botanic Garden & Edinburgh

Order: Solanales

Family: Solanaceae

[Solanum capense](#) L. . Characteristics: shrub, 0,45 m tall, cream to pale purple coloured flowers, yellow berries, slightly hairy leaves, slightly thorny stem, moderate toxicity of the apples. ([Van der Walt and le Riche 1999](#): 80)

- **bitterapple** . Categories: *plante*.
- **jakkalsbessie** . Categories: *plante*.
- **nagskade** . Categories: *plante*.



(CC) BY-NC-SA © MBG

[Solanum lycopersicum](#) L. .

- **tamatie** . Categories: *plante*.



(CC) BY-SA ©



(CC) BY-SA ©



(CC) BY © Tim Sheerman-Chase

[Solanum supinum](#) Dunal . Characteristics: sprawling shrub, 40 cm tall, leaf margins deeply undulated, leaves covered with hairs, solitary white or pale violet flowers, fruit is a yellow berry. Biotope: grassland, dry river course. ([Van Rooyen et al. 2001](#): 76)

- **tandpynbos** . Categories: *plante*.



Public Domain by Christfried Naumann



Public Domain by Christfried Naumann

[Solanum tuberosum](#) L. .

- **aartappel** . Categories: *plante*.



(CC) BY-SA ©



(CC) BY-SA ©



(CC) BY-SA ©

Order: Zygophyllales

Family: Zygophyllaceae

[Tribulus terrestris](#) L. . Characteristics: creeping growth, yellow flowers, flower 1 cm in diameter, soft-haired leaves, woody, sharp, spiny fruits that can puncture animals' hoofs, bare feet and bicycle tyres. ([Van der Walt and le Riche 1999](#): 109)

- **dubbeltjie** . Categories: *plante*.
- **duwweltjie** . Categories: *plante*.
- **dubbeltjiedoring** . Categories: *plante*.
- **platdubbeltjie** . Categories: *plante*.
- **volstruisdoring** . Categories: *plante*.



(CC) BY © Jeff Heath and the Dogon and Bangime Languages Project



(CC) BY-SA © Stan Shebs



(CC) BY-SA © Stan Shebs

Phylum: other

Class: other

Order: Gentianales

Family: Apocynaceae

[Adenium oleifolium](#) . Characteristics: succulent, up to 1 m tall, large stem tuber above the ground, longitudinal leaves, pink flowers. Biotope: dry river course, sandy soil. ([Van der Walt and le Riche 1999](#): 86; [Van Rooyen et al. 2001](#): 202)

- **ouheip** . Categories: *plante*.
- **bitterkambro** . Categories: *plante*.



(CC) BY © Peter A. Mansfeld

Kingdom: Viridiplantae

Phylum: Streptophyta

Class: Magnoliopsida

Order: Boraginales

Family: Ehretiaceae

Ehretia rigida . Characteristics: Shrub, 1-3m tall, small green leaves clustered on reduced shoots, the pale mauve, bluish or white tubular flowers are sweetly scented, the berry changes from yellow to black while ripening,. Biotope: forest, arid woodland. ([Van Rooyen et al. 2001](#): 50)

- **deurmekaarbos** . Categories: *plante*.
- **gwenjabessie** . Categories: *plante*.



Public Domain by Christfried Naumann



Public Domain by Rotational



Public Domain by Rotational

Order: Brassicales

Family: Capparaceae

Boscia albitrunca (Burch.) Gilg & Gilg-Ben. . Characteristics: 2–4m tall, small flowers, no petals, grey to whitish-grey bark. Biotope: savanna, woodland, sandy soil. ([Carruthers \(eds.\) 2000](#): 247; [Van der Walt and le Riche 1999](#): 55; [Van Rooyen et al. 2001](#): 24)

- **witgatboom** . Categories: *bome, plante*.
- **witgat** . Categories: *bome, plante*.
- **matoppie** . Categories: *bome, plante*.
- **witstam** . Categories: *bome, plante*.
- **wittebom** . Categories: *bome, plante*.



Public Domain by Taa documentation team
(Boden/Güldemann/Naumann)



Public Domain by Christfried Naumann



Public Domain by Christfried Naumann

Boscia foetida . Characteristics: small tree or shrub, greenish flowers without petals, unpleasant scent of the flowers, yellowish berries about 10mm in diameter. Biotope: dry river course, rocky area. ([Van der Walt and le Riche 1999](#): 60; [Van Rooyen et al. 2001](#): 40)

- **stinkwitgat** . Categories: *bome, plante*.
- **noenieboom** . Categories: *bome, plante*.
- **stinkbos** . Categories: *bome, plante*.
- **mapiepie** . Categories: *bome, plante*.
- **oumeidsbos** . Categories: *bome, plante*.



(CC) BY-NC © Rob Burrett



(CC) BY-NC © Rob Burrett



(CC) BY-NC © Rob Burrett

Family: Cleomaceae

[*Cleome angustifolia*](#) . Characteristics: erect, annual herb; up to 1,5 m; spider-like yellow flowers with a reddish base and two large petals; fast-growing; thin, hairy pods 8 cm long; many compound, linear leaves. ([Van der Walt and le Riche 1999](#): 117)

- **wilde ertjie** . Categories: *plante*.



(CC) BY-NC-SA © Bernard DUPONT



(CC) BY-NC © Rob Burrett



(CC) BY-NC © Bart Wursten

Order: Cucurbitales

Family: Cucurbitaceae

[*Coccinia rehmannii*](#) Cogn. .

- **wilde komkommer** . Categories: *plante*.



Public Domain by Christfried Naumann



Public Domain by Christfried Naumann



Public Domain by Christfried Naumann

[*Cucumis africanus*](#) L. f. . Characteristics: creeping growth, runners can grow to a length of 50 m, 7 cm long spiny fruit, can be bitter or sweet. Biotope: savanna, arid area, sandy soil, dune. ([Van der Walt and le Riche 1999](#): 115; [Van Rooyen et al. 2001](#): 146)

- **doringkomkommer** . Categories: *plante*.
- **springbokkomkommer** . Categories: *plante*.
- **wilde komkommertije** . Categories: *plante*.
- **wilde agurkie** . Categories: *plante*.



Public Domain by Christfried Naumann



Public Domain by Christfried Naumann



Public Domain by Christfried Naumann

Order: Fabales

Family: Polygalaceae

[Securidaca longipedunculata](#) Fresen. .

- **krinkhout** . Categories: *bome, plante.*



(CC) BY-NC-SA © Research Institute Senckenberg



(CC) BY-NC © Bart Wursten



(CC) BY-SA © Marco Schmidt

Order: Gentianales

Family: Apocynaceae

[Carissa bispinosa](#) .

- **noemnoem** . Categories: *plante.*



(CC) BY-SA ©



(CC) BY-NC © Bart Wursten



(CC) BY-NC © Bart Wursten

[Pentarrhinum insipidum](#) E. Mey. .

- **donkieperske** . Categories: *plante*.
- **hondepisbossie** . Categories: *plante*.
- **opklim** . Categories: *plante*.
- **wildekomkommer** . Categories: *plante*.



(CC) BY-NC © Bart Wursten



(CC) BY-NC © Bart Wursten



(CC) BY-NC © Bart Wursten

Family: Loganiaceae

[Strychnos madagascariensis](#) Poir. .

- **swartklapper** . Categories: *plante*.
- **botterklapper** . Categories: *plante*.



(CC) BY-SA © Ton Rulkens from Mozambique



(CC) BY-NC-SA © Research Institute Senckenberg

Order: Lamiales

Family: Bignoniaceae

[Catophractes alexandri](#) D. Don . Characteristics: shrub, large trumpet-shaped white flowers, sometimes slightly pink, hairy blue-grey leaves, hard black thorns in pairs, fruit is a woody capsule. Biotope: semi-arid savanna. ([Van der Walt and le Riche 1999](#): 75; [Van Rooyen et al. 2001](#): 54)

- **trompetdoring** . Categories: *plante*.
- **gabbabos** . Categories: *plante*.

- **swartdoring** . Categories: *plante*.
- **n!Harrie** . Categories: *plante*.
- **skaapbos** . Categories: *plante*.
- **papwielbos** . Categories: *plante*.



Public Domain by Christfried Naumann



Public Domain by Christfried Naumann



Public Domain by Christfried Naumann

Family: Lamiaceae

Acrotome inflata Benth. . Characteristics: annual herb; up to 50 cm; small white flowers, packed in dense rows in spherical axillary inflorescences; hardy, rectangular, finely ripped stalk; few opposite, pendent leaves. Biotope: sandy soil, dune. ([Van der Walt and le Riche 1999](#): 118; [Van Rooyen et al. 2001](#): 182)

- **tolbossie** . Categories: *plante*.
- **perdeskrikbossie** . Categories: *plante*.



(CC) BY-NC © Bart Wursten



(CC) BY-NC © Bart Wursten



(CC) BY-NC © Bart Wursten

Tetradenia riparia (Hochst.) Codd .

- **gemmerbos** . Categories: *plante*.
- **watersalie** . Categories: *plante*.



(CC) BY-SA © Ton Rulkens



(CC) BY-SA © Ton Rulkens



(CC) BY-SA ©

Family: Pedaliaceae

Sesamum triphyllum Welw. ex Aschers. . Characteristics: erect, annual herb; 25-200 cm; solitary, dark pink flowers with darker centre; small, butterfly-shaped seeds; fruit oblong capsule; aromatic leaves. Biotope: savanna, grassland, sandy soil. ([Van der Walt and le Riche 1999](#): 119; [Van Rooyen et al. 2001](#): 186)

- **brandboontjie** . Categories: *plante*.
- **wilde sesaam** . Categories: *plante*.
- **bokboontjie** . Categories: *plante*.



(CC) BY-NC © Bart Wursten



(CC) BY-NC © Bart Wursten



(CC) BY-NC © Bart Wursten

Family: Verbenaceae

Lippia javanica (Burm.f.) Spreng. .

- **koorsbossie** . Categories: *plante*.
- **beukesbossie** . Categories: *plante*.
- **lemoenbossie** . Categories: *plante*.



(CC) BY-NC © Bart Wursten



(CC) BY-NC © Bart Wursten



(CC) BY-NC © Bart Wursten

Order: Malpighiales

Family: Ochnaceae

Ochna pulchra Hook. . Characteristics: shrub or tree, up to 6m tall, shiny light green leaves, small sweetly-scented pale yellow flowers. Biotope: woodland, sandy soil. ([Van Rooyen et al. 2001](#): 50)

- **lekkerbreek** . Categories: *bome, plante*.



Public Domain by Rotational



Public Domain by Rotational



Public Domain by Rotational

Order: Proteales

Family: Proteaceae

Faurea saligna Harv. .

- **bosveldboekenhout** . Categories: *plante*.



Public Domain by Rotational



(CC) BY-NC © Bart Wursten



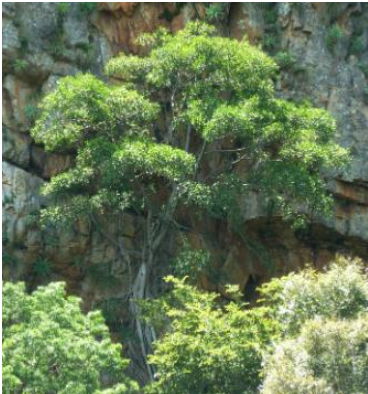
Public Domain by Rotational

Order: Rosales

Family: Moraceae

[Ficus ingens](#) (Miq.) Miq. .

- rooiblaarvy . Categories: *plante*.



(CC) BY-SA ©



(CC) BY-SA ©



CC-Zero ©

Family: Rhamnaceae

[Berchemia zeyheri](#) (Sond.) Grubov .

- rooi-ivoor . Categories: *plante*.
- rooihout . Categories: *plante*.



(CC) BY-NC © Bart Wursten



(CC) BY-NC © Bart Wursten



(CC) BY-NC © Bart Wursten

Ziziphus mucronata . Characteristics: 2 - 5 m tall, yellowish-green flowers, greyish-brown bark, thorns in pairs.
Biotope: river course, arid area. ([Carruthers \(eds.\) 2000](#): 263; [Van Rooyen et al. 2001](#): 34)

- **blinkblaar-wag-'n-bietjie** . Categories: *bome, plante*.



Public Domain by Christfried Naumann



(CC) BY-NC-SA © Research Institute Senckenberg



Public Domain by Gertrud Boden

Order: Santalales

Family: Ximeniaceae

Ximenia caffra Sond. .

- **grootsuurpruim** . Categories: *plante*.



(CC) BY-NC-SA © Bernard DUPONT



(CC) BY-SA © Paul venter



(CC) BY-NC © Bart Wursten

Order: Sapindales

Family: Anacardiaceae

[Ozoroa paniculosa](#) (Sond.) R. & A. Fernandes .

- gewone harpuisboom . Categories: *bome, plante*.



(CC) BY-SA © JMK



(CC) BY-SA © Paul venter



(CC) BY-SA © Paul venter

[Rhus pyroides](#) (L.) F. A. Barkley .

- gewone taaibos . Categories: *bome, plante*.



(CC) BY-SA © JMK



(CC) BY-NC © Scamperdale



(CC) BY-SA © JMK

[Searsia leptodictya](#) (Diels) T.S.Yi, A.J.Mill. & J.Wen .

- bergkaree . Categories: *bome, plante*.
- klipkaree . Categories: *bome, plante*.



(CC) BY-SA ©



(CC) BY-SA © JMK



(CC) BY-SA ©

Order: Solanales

Family: Solanaceae

Lycium bosciifolium Schinz . Characteristics: shrub, up to 3m tall, thorny stems, small green lance-shaped hairless leaves, long dirty white to greenish flowers with dark violet lobes, the fruit is a glossy, purplish berry. Biotope: dry river course, arid area, sandy soil, dune. ([Van Rooyen et al. 2001](#): 52)

- **wolfdoring** . Categories: *plante*.



Public Domain by Christfried Naumann



Public Domain by Christfried Naumann



Public Domain by Christfried Naumann

Class: other

Order: Cucurbitales

Family: Cucurbitaceae

Acanthosicyos naudinianus . Characteristics: melon plant, creeping growth, yellow flowers, yellow, thorny, oval-shaped fruits of approx. 250 g, fruit and seeds edible, long root tuber. Biotope: sandy soil, dune. ([Van Rooyen et al. 2001](#): 146)

- **gemsbokkomkommer** . Categories: *plante*.



Public Domain by Christfried Naumann



Public Domain by Christfried Naumann

Kingdom: other

Phylum: other

Class: Agaricomycetes

Order: other

Family: other

[Fungi](#) .

- **swam** . Categories: *swamme*.

Class: Aves

Order: other

Family: other

[Animalia](#) .

- **dier** . Categories: *diere*.