

An Annotated Checklist of the Orchids of Sri Lanka

Samantha Suranjan Fernando and Paul Ormerod¹

Post Graduate Institute of Science, University of Peradeniya, Peradeniya, Sri Lanka.
E-mail: sasurh@yahoo.com

¹P.O. Box 8210, Cairns 4870, Queensland, Australia.
E-mail: wsandave@bigpond.net.au

Abstract

A general description of Sri Lanka and its bioclimatic zones are presented. The history of the Island's orchid taxonomy is briefly reviewed. An updated checklist is presented for the country's orchid flora using recent information. New species, new records and nomenclatural changes from previous lists are annotated with appropriate references. This work lists 188 species belonging to 78 genera with one endemic genus (*Adrorhizon* Hook. f.) and 55 endemic species. A new name, *Bulbophyllum jayaweerae* Fernando et Ormerod, is proposed for *Cirrhopetalum roseum* Jayaweera. Illegitimacy of the name *Saccolabium virescens* Gardner ex Lindl. is discussed and this species is described as a new taxon, *Robiquetia virescens* Ormerod et Fernando.

Keywords: Sri Lanka, Orchids, *Bulbophyllum jayaweerae*, *Robiquetia virescens*, New name, New taxon

Introduction

Sri Lanka is a pear shaped island in the Indian Ocean lying in the southern tip of the Indian Peninsula (Fig. 1). It lies between 5° 55' - 9°51' North latitudes and 79° 41' - 81°54' East longitudes and covers a total area of 65,609.8 km² consisting of 64,453.6 km² of land area and 1,156. 2 km² of inland waters. The island has a maximum length of about 435 km and a maximum width of about 225 km. Its natural vegetation is principally determined by the rainfall pattern and elevation.

The Island has three penепlains. The first is from sea level to 900 m. In the north and north-east to the south-east is a large flat lowland that gets low quantities of rain (<2000 mm per year) from the north-east monsoon. This comprises the dry zone. The vegetation principally comprises of drought tolerant hardy species and orchids are not abundant here. The south-western part of this penепlain gets an average 5000 mm of rainfall per year mainly from the south-western monsoon. The rainfall occurs without a dry month in the year, creating an aseasonal wet climate. This area represents the wet zone. The lower area of the wet zone consists of lowland wet forests. Tall forests with several strata are characteristic of this vegetation. Orchid diversity is very high in this area.

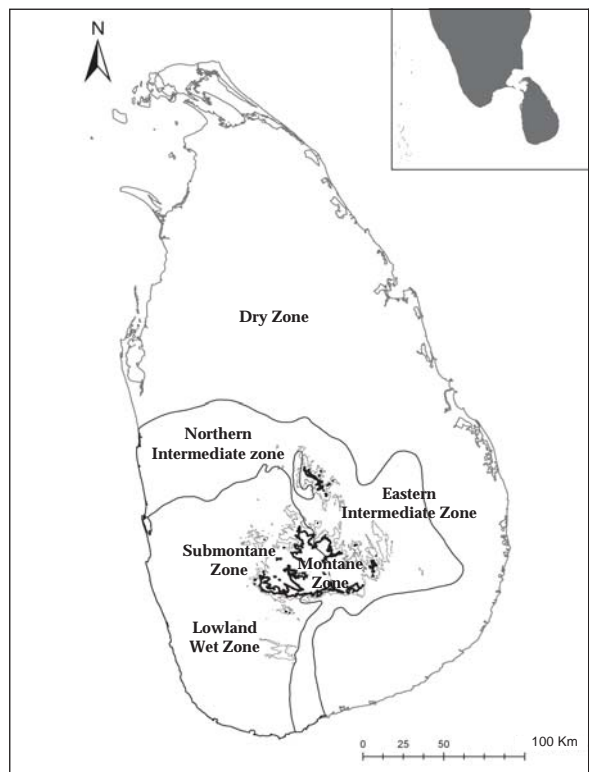


Figure 1. Main bioclimatic zones of Sri Lanka.

In between the wet and dry zones, there is a narrow transitional zone called the intermediate zone. The eastern side of the intermediate zone mainly consists of savannah type of forest vegetation.

The second peneplain is from 900 to 1100 m. The submontane zone is found in this altitudinal range. This is a transitional zone between the lowland wet zone and the montane zone. Forests in these areas harbour the country's richest orchid diversity. The third peneplain continues to the highest mountains, such as Pidurutalagala (2220 m). Montane forests are found in this area (see Fig. 3 a-f).

Orchidaceae is one of the largest families in Sri Lanka. It is distributed in almost all terrestrial vegetation types and occupies various habitats.

Historical Background

Sri Lanka has a long history of botanical collections. Many pioneers of botanical literature have cited numerous records from Sri Lanka. Among these species, orchids are an interesting group. Paul Hermann (1646-1695) was a German born Dutch botanist and the first European botanist to make a collection of plants from Sri Lanka. He got employment in the Dutch East India Company as a ship's Medical Officer and thus reached Sri Lanka where he spent eight years collecting plants and animals during 1670-1677. Here, he made an impressive collection of dried plants and drawings. He joined as Chair of Botany at the University of Leiden in 1679 and in a matter of a few years the Leiden Botanical Garden became the finest one in Europe. He did not publish anything about his Sri Lankan collection which was passed on to Johannes Burman, Carl Linnaeus and others. His premature death in 1695 prevented its availability to the botanists of his time. His collection included two orchids, *Zeuxine strateumatica* (L.) Schltr. and *Peristylus cubitalis* (L.) Kraenzlin, the very first Sri Lankan orchids made known to the outside world. These plants were to wait for scientific naming till 1753 when Linnaeus gave them their binomials. Some of Hermann's manuscripts were edited by W. Sherard who included a few descriptions and reduced figures of Sri Lankan plants in *Paradisus Batavus* in 1698. Sherard also published a useful booklet on Hermann's herbarium and illustrations called *Museum Zeylanicum* (1717). Johannes Burmann (1707-1778), a Dutch physician and botanist at Amsterdam (Fig. 2) and a friend and correspondent of Linnaeus, utilized *Museum Zeylanicum* and Hermann's specimens to compile an alphabetical list



Figure 2. Johannes Burmann

of Sri Lankan plants called *Thesaurus Zeylanicus* (1737). Linnaeus also helped him in the preparation of this book. In appreciation of Burman's work, Linnaeus later commemorated him with a genus *Burmannia*.

Hermann's collection remained unknown till 1744 when the five volume set was sent to Linnaeus who immediately started working on it and produced his *Flora Zeylanica* in 1747. Linnaeus' binomial nomenclature was not inaugurated at that period and hence, no species in *Flora Zeylanica* were named in the modern sense but they are referred to as the Linnaean genera. Linnaeus gratefully dedicated this work to Günther who sent the Hermann set to him. Hermann was commemorated by the genus *Hermannia* L.

J. G. König (1728-1785), from his travels, cited several specimens of Sri Lankan native orchids, some with their Sinhala names (Seidenfaden, 1995a). He made collections in Sri Lanka in the years 1777, 1780 and 1781. He is commemorated by the genus *Koenigia* L. (Polygonaceae) and many species e.g. *Murraya koenigii*.

During the English colonial period, botanical gardens were established in Sri Lanka and many botanical works began. Alexander Moon (?-1825) made a large number of herbarium collections and wrote *A Catalogue of the Indigenous and Exotic Plants Growing in Ceylon* (1824). He is immortalized by the genus *Moonia* (Asteraceae) and several species like *Vanilla moonii*. James Macrae (?-1830) collected many orchid specimens from the country and sent them

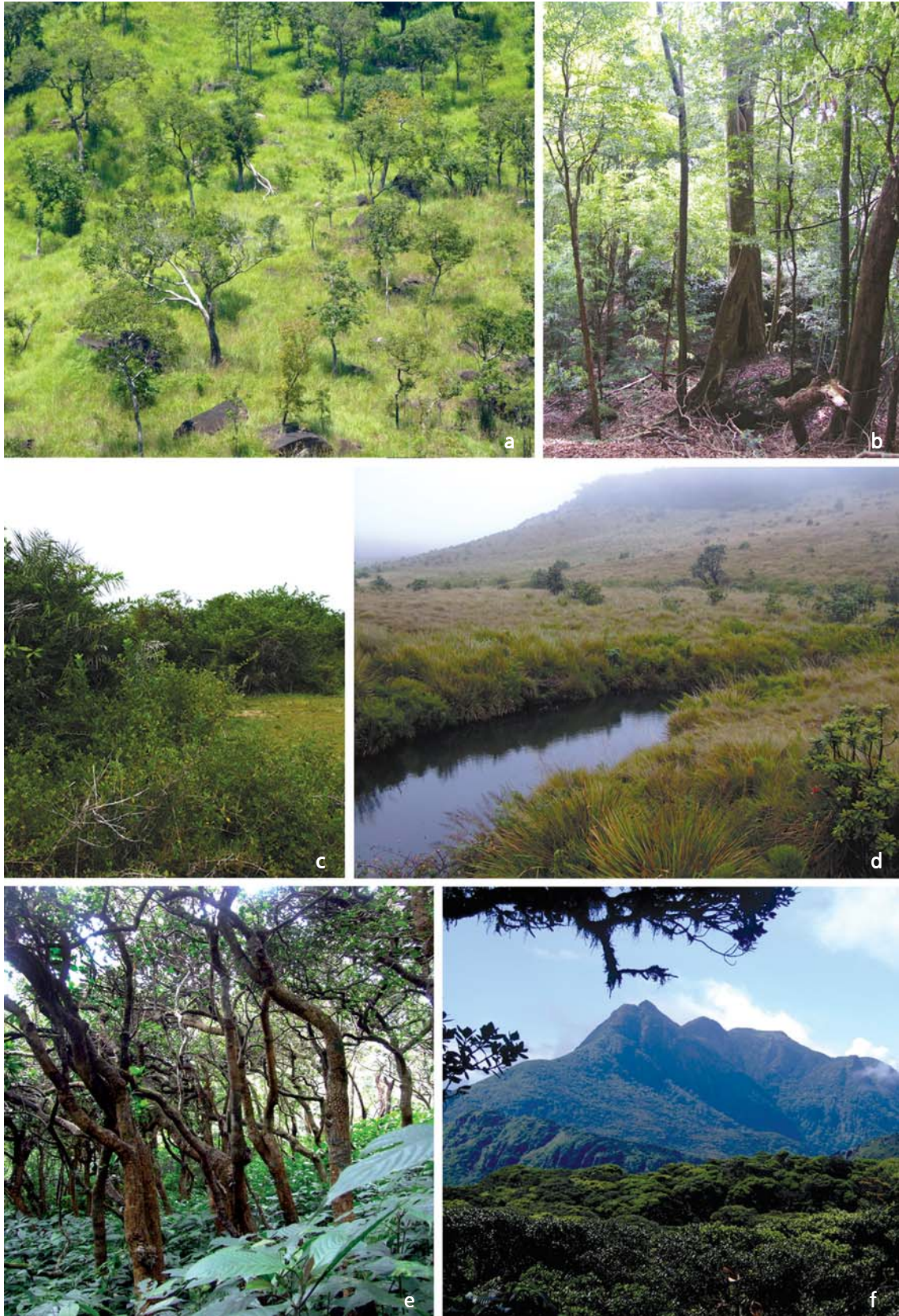


Figure 3. a. Savannah type vegetation in eastern intermediate zone; b. Dry zone forest; c. Arid zone scrub forest; d. Montane grassland; e. Inside of mountain to montane forest; f. Submontane zone forest (all photographs by S.S. Fernando).

to Lindley (1799-1865) for naming. He is commemorated by *Flickingeria macraei*.

Colonel J. T. Walker and Mrs. A. W. Walker (fl.1830-1840) gathered an extensive collection of orchid specimens and sent them to England. Among these were specimens from Adam's Peak, one of the country's richest orchid habitats. The Walkers are suitably remembered by many orchids - *Vanilla walkerae*, *Liparis walkeriae*, *Thrixsperum walkeri* etc.

George Gardner (1812-1849) was a British botanist and explorer who became the superintendent of Peradeniya Botanical Garden. Gardner made an extensive collection of Ceylon plants which included many orchids. Unfortunately, he died at the early age of 37. He is commemorated by the genus *Gardneria* Wall. (Strychnaceae) and many orchids - *Hetaeria gardneri*, *Oberonia gardneriana*, *Peristylus gardneri* etc.

Following Gardner came another British naturalist of immense caliber and energy by the name of George Henry Kendrick Thwaites (1812-1882) (Fig. 4). He spent 31 years in the island and laid a strong foundation for botanical studies and heavily contributed to the science. His *Enumeratio* was a comprehensive flora published in five parts during 1858-1864. All the then orchids (145 species) were treated with his critical comments and observations. He also initiated the series C. P. (Ceylon Plants) numbers most of which are the basis of hundreds of species. He is commemorated by many orchids like



Figure 4. G. H. K. Thwaites



Figure 5. H. Trimen

Eria thwaitesii, *Bulbophyllum thwaitesii*, *Liparis thwaitesii*, *Malaxis thwaitesii*, *Oberonia thwaitesii*, *Vanda thwaitesii* etc.

When Thwaites retired in 1880, Henry Trimen (1843-1896) (Fig. 5) joined Peradeniya Botanic Garden as its next Director. Trimen was amply qualified to adorn the post and made several lasting improvements in the garden. His magnum opus was *Handbook to the Flora of Ceylon* three volumes of which appeared between 1893 and 1895. They are considered as a model for a tropical flora. Paralysis and deafness did not permit him to complete the series. The volume containing Orchidaceae was completed by J. D. Hooker (1898). Trimen is commemorated by the orchids *Bulbophyllum trimenii*, *Liparis trimenii*, *Peristylus trimenii* etc.

While working for the *Flora of British India*, Joseph Dalton Hooker (1817-1911) had already treated the Orchidaceae in detail including materials from Ceylon (1888-1890). Hence, when Trimen was incapacitated Hooker was the natural choice. Hooker dealt with 158 species in 61 genera. Arthus Hugh Garfit Alston (1902-1958) brought out the final volume of the series incorporating changes and additions in 1931. A revision of the entire flora was begun in 1968 in collaboration with the Smithsonian institution. Orchidaceae authored by Don Jayaweera was published in 1982.

Don Martin Arthur Jayaweera (1912-1982) (Fig. 6) was the son of an Ayurvedic physician who instilled in him a keen interest in plants. After formal education,

he went to England for higher education. When he came back in 1945 Jayaweera was appointed Superintendent of the Royal Botanic Gardens, Peradeniya. He made extensive collections from remote areas of Sri Lanka. He sent a large collection of orchids to B. J. Premasuriya, an artist at PDA who illustrated them for publications. He also exchanged herbarium specimens with leading orchidologists like Dr Leslie Garay (AMES) and published many novelties in Sri Lankan orchids. He passed away at the age of 70. He is commemorated by *Phreatia jayaweerae*, *Bulbophyllum jayaweerae*, the latter named in this contribution.

Among all these publications (Table 1), Jayaweera's (1981) work is the major reference currently available



Courtesy : National Botanic Garden, Sri Lanka

Figure 6. Don Martin Arthur Jayaweera

in the country. Senaratna (2001) and Fernando *et al.* (2003) have mainly based their work on Jayaweera's book with a few changes. Though Jayaweera's chapter was published in 1981, the manuscript was completed as far back as 1975 (pers. comm., Prof. M. D. Dassanayake, General Editor, Flora of Ceylon project). During this period there were many changes with new information on orchid systematics.

Our modest attempt here is to

1. Solve some nomenclatural problems and species ambiguity existing in previous lists.
2. Include new name changes and species records. We found several distribution records new to Sri Lanka from various literature sources and internet databases but most were doubtful. Thus, we have considered only the precise records with citations of herbarium specimens or live plants, giving notes at relevant places.

Table 1. Number of orchid species described in many leading works on Sri Lankan plants.

Publication	Genera	Species	Endemic
Moon, 1824	10	17	-
Thwaites, 1864	65	145	-
Trimen, 1885	57	165	
Hooker in Trimen, 1896	61	158	67
Hooker, 1888-1890	57	151	76
Willis, 1911	61	161	78
Abeywickrama, 1959	67	160	-
Ekanayake, 1975	66	166	87
Jayaweera, 1981	69	168	74
Sumithraarachchi, 1986	68	170	74
Senaratna, 2001	67	170	65
Fernando <i>et al.</i> 2003	69	173	66
Present list	78	188	55

3. Find out current endemic species.

At present, the number of endemic species is vastly reduced from that in previous publications, especially with the rapid development of south Indian botanical literature.

In the present work, Sri Lankan orchids are arranged genus wise alphabetically and under each genus, species also alphabetically. Endemics are marked with an* and adventive taxa with #. Literature base for new species and taxonomic and status changes from Jayaweera (1981) and Senaratne (2001) are noted. Under distribution is/are stated the main bioclimatic zone/s of each species.

Acampe Lindley

Fol. Orchid. 4:1.1835.

Acampe ochracea (Lindl.) Hochr., Bull. New York Bot. Gard. 6: 270. 1910. *Saccolabium ochraceum* Lindl., Bot. Reg. 28: Misc. 2. 1842.

Distribution: Lowland wet zone.

Sinhala: Kuda Namba

Acampe praemorsa (Roxb.) Blatter & Mc Cann, J. Bombay Nat. Hist. Soc. 35: 495. 1932. *Epidendrum praemorsum* Roxb., Pl. Corom. 34. t. 43. 1795. *Saccolabium wightianum* (Lindl.) Hook. f., Fl. Brit. India 6: 62. 1890.

Distribution: Northern and Eastern intermediate zones.

Acampe rigida (Buch.-Ham. ex J. E. Smith) P. F. Hunt, Kew Bull. 24: 98. 1970. *Aerides rigida* Buch.-Ham. ex J. E. Sm. In Rees, Cyclop. 39.1819. *Saccolabium longifolium* Hook. f., Fl. Brit. India 6:62. 1890.

Distribution: Lowland wet zone.

Sinhala: Maha Namba

Acanthephippium Blume

Bijdr. 353. 1825.

Acanthephippium bicolor Lindl., Edwards. Bot. Reg. 20: t. 1730. 1835. **Fig. 8a**

Distribution: Lowland wet and submontane zones.

* **Adrorhizon** Hook. f.

in H. Trimen, Handb. Fl. Ceylon 4:161.1898.

* **Adrorhizon purpurascens** (Thwaites) Hook. f. in H. Trimen, Handb. Fl. Ceylon 4: 161. 1898. *Dendrobium purpurascens* Thwaites, Enum. Pl. Zeyl. 298. 1861. *Coelogyne purpurascens* (Thwaites) Hook. f., Fl. Brit. India 5: 842. 1890. **Fig. 8b**

Distribution: Submontane and montane zones.

Aerangis Rchb. f.

Flora 48: 190. 1865.

Aerangis hologlottis (Schltr.) Schltr., Beih. Bot. Centralbl. 36 (2): 117. 1918. *Angraecum hologlottis* Schltr., Repert. Spec. Nov. Regni Veg. 3: 82. 1906. **Fig. 8f**

Distribution: Lowland wet zone.

Note: The species has a scattered distribution in tropical east Africa (Kenya, Mozambique, Tanzania) (World Checklist of Monocots, 2007).

Aerides Lour.

Fl. Cochinch. 525. 1790.

Aerides ringens (Lindl.) C. E. C. Fischer in Gamble, Fl. Madras 1442. 1928. *Saccolabium ringens* Lindl., Gen., Sp. Orch. 221. 1833. *Aerides lineare* Hook. f., Fl. Brit. India 6: 47. 1890.

Distribution: Eastern Intermediate zone.

Agrostophyllum Blume

Bijdr. 368.1825.

* **Agrostophyllum zeylanicum** Hook. f., Fl. Brit. India 5: 824. 1890.

Distribution: Lowland wet zone.

Angraecum Bory

Voy. îles Afrique 1: 359. 1804.

Angraecum zeylanicum Lindl., J. Proc. Linn. Soc.,

Bot. 3: 40. 1858. *Mystacidium zeylanicum* (Lindl.) Trimen, J. Ceyl. Br. Roy. As. Soc. 9: 90. 1885. **Fig. 8c**

Distribution: Lowland wet zone.

Note: This species is also recorded from the Seychelles (World Checklist of Monocots, 2007).

Anoectochilus Blume

Bijdr. 411. 1825.

Anoectochilus elatus Lindl., J. Linn. Soc., Bot. 1:178. 1857.

Distribution: Submontane zone.

Note: Ormerod (2004) recorded this Indian species from Sri Lanka after examining a specimen from Sri Lanka (Jayaweera 46, AMES).

* **Anoectochilus regalis** Blume, Coll. Orch. Archip. Ind. 46. 1858. *A. frederici-augusti* Rchb. f., Hamburger Garten-Blumenzeitung 16: 177. 424. 1860. *A. neglectus* Blume, Coll. Orchid. 47. 1858. [*Wanna Ladja Cingalensium* Koen. in sched., *nom. nud.*] *A. setaceus* non Blume: Jayaweera, Rev. Handb. Fl. Ceylon 2: 305. 1985.

Distribution: Lowland wet to submontane zone.

Sinhala: Wana raja

Note: Correct name for this species is *A. regalis* Blume, an endemic species of Sri Lanka. *A. setaceus* Blume, with which this has often been confused, is found in Java (Comber, 1990).

Aphyllorchis Blume

Bijdr. t. 16, f. 77. 1825.

Aphyllorchis montana Rchb. f., Linnaea 41: 57. 1877.

Distribution: Lowland wet zone.

Apostasia Blume

Bijdr. 423. 1825.

Note: Jayaweera treated Apostasiaceae as a separate family. This genus was unknown to Jayaweera when

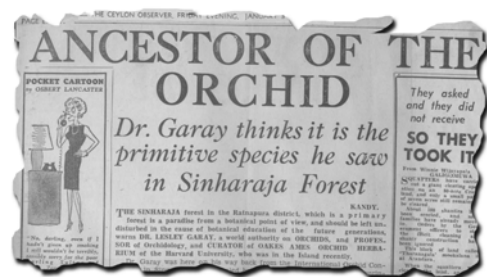


Figure 7. Discovery of *Apostasia* in Sinharaja forest as it appeared in Ceylon Observer (1964).



Figure 8. a. *Acanthephippium bicolor* Lindl.; b. *Adrorhizon purpurascens* (Thwaites) Hook. f. ; c. *Angraecum zeylanicum* Lindl.; d. *Apostasia wallichii* R. Br.; e. *Arundina minor* Lindl.; f. *Aerangis hologlottis* (Schltr.) Schltr (photographs: a by P. Samaravikrama; b,d,f by S.S. Fernando; c by Priyadarshana; e by P. Anthony).

he accompanied Dr Leslie Garay to Sinharaja forest in 1964, where it was collected and identified as *Apostasia* (see also Fig. 7). Now the consensus is to treat it as a subfamily of Orchidaceae (Dressler, 1993; Chase *et al.*, 2003; World Checklist of Monocots, 2007).

Apostasia wallichii R. Br. in Wallich, Pl. Asiat. Rar. 1: 75. 1830. **Fig. 8d**

Distribution: Lowland wet zone.

Arundina Blume

Bijdr. 401.1825.

Arundina graminifolia (D. Don) Hochr., Bull. New York Bot. Gard. 6: 270. 1910.

Bletia graminifolia D. Don, Prodr. Fl. Nepal. 29. 1825.

English: bamboo orchid

Distribution: Lowland wet and submontane zones.

* ***Arundina minor*** Lindl., Gen. Sp. Orchid. Pl. 125. 1831. **Fig. 8e**

Distribution: Submontane zone.

Note: *A. minor* Lindl. has been synonymised under *A. graminifolia* (D. Don) Hochr., a widespread taxon found in disturbed areas (World Checklist of Monocots, 2007). After examining floral, morphological and habitat characters, these two taxa have been clearly distinguished in Sri Lanka as different entities. We prefer to keep them separate.

Bromheadia Lindley

Edwards Bot. Reg. 27 (App.): 90. 1841.

* ***Bromheadia srilankensis*** Kruizinga & de Vogel, Orchid Monogr. 8: 112. 1997. **Fig. 9b**

Distribution: Lowland wet zone.

Note: A specimen (*Fernando s.n.*, 04-1977) deposited in Kew collected from Sinharaja forest from Sri Lanka was described as a new species (Kruizinga & de Vogel, 1997).

Bulbophyllum Thouars

Hist. Orchid.: f. 93-97. 1822, *nom. cons.*

Note: We have treated *Bulbophyllum* in the broad sense and therefore, include *Trias* Lindley and *Cirrhopetalum* Lindley in it.

* ***Bulbophyllum crassifolium*** Thwaites ex Trimen, J. Bot. 23: 244. 1885. *Trias crassifolia* (Thwaites ex Trimen) Sathish, Blumea 34: 108. 1989.

Distribution: Lowland wet zone.

Bulbophyllum elegans Gardner ex Thwaites, Enum.

Pl. Zeyl. 298. 1861. **Fig. 9a**

Distribution: Lowland wet and submontane zones.

Note: This species has been recorded from Agastyamala in Kerala (*CSK 1426, 1430TBGT*), India by Sathish and Manilal (1994: 59).

* ***Bulbophyllum elliae*** Rchb. f. in Walper's, Ann. Bot. Syst. 6: 263. 1861.

Distribution: Montane and submontane zones.

* ***Bulbophyllum jayaweerae*** Fernando *et* Ormerod, *nom. nov.* Basionym: *Cirrhopetalum roseum* Jayaweera, Bot. Mus. Leaflet Harv. Uni. 20,4:108, t. XVII, 1963. *B. elliae* non Rchb.f.: Seidenfaden, Dansk Bot. Ark. 29(1): 145. 1973.

Distribution: Submontane zone.

Note: This species has been confused with *B. elliae* Rchb. f. for a long period of time due to the mix of C.P. numbers from PDA and other herbaria. Jayaweera (1963) described this species as *Cirrhopetalum roseum* and afterwards synonymised it under *B. elliae* Rchb. f. (Seidenfaden, 1974). But Garay and Romero-Gonzalez (1999) argue, using shapes of the petals, sepals and coloration as distinguishing characters, that this is a valid species.

The name *Bulbophyllum roseum* Ridl. 1896 [now *Trias rosea* (Ridl.) Seidenf. 1976], a species from Malaya and Indochina already exists. Therefore, Jayaweera's *C. roseum* needs a new name in *Bulbophyllum*.

Bulbophyllum macraei (Lindl.) Rchb. f. in Walper's, Ann. Bot. Syst. 6: 263. 1861. *Cirrhopetalum macraei* Lindl., Gen. Sp. Orch. Pl. 59.1830. **Fig. 9f**

Distribution: Submontane zone.

Note: Srinivasan and Chitra (1989) recorded this species from Tamil Nadu, India. Furthermore, it has been recorded as far away as Japan and Taiwan.

* ***Bulbophyllum maskeliyense*** Livera, Ann. Roy. Bot. Gard. (Peradeniya) 10: 142. 1926.

Distribution: Submontane zone.

Note: This species has been recorded from the Western Ghats, India (Muktesh Kumar and Sequiera, 2000).

* ***Bulbophyllum petiolare*** Thwaites, Enum. Pl. Zeyl. 298.1861. **Fig. 9e**

Distribution: Submontane zone.

* ***Bulbophyllum purpureum*** Thwaites, Enum. Pl. Zeyl. 298. 1861.

Distribution: Lowland wet and submontane zones.



Figure 9. a. *Bulbophyllum elegans* Gardner ex Thwaites; b. *Bromheadia srilankensis* Kruizinga & de Vogel; c. *Bulbophyllum wightii* Rchb. f.; d. *Bulbophyllum thwaitesii* Rchb. f.; e. *Bulbophyllum petiolare* Thwaites; f. *Bulbophyllum macraei* (Lindl.) Rchb. f. (photographs: a,e,f by P. Samaravikrama; b,c by S.S. Fernando; d by I. Priyadarshana).

* **Bulbophyllum thwaitesii** Rchb. f., J. Bot. 12: 199. 1874. *Cirrhopetalum thwaitesii* (Rchb. f.) Hook. f., Fl. Brit. India 5: 777. 1890. **Fig. 9d**

Distribution: Lowland wet, submontane to montane zones.

* **Bulbophyllum tricarınatum** Petch, J. Indian Bot. 3: 148. 1923.

Distribution: Submontane zone.

* **Bulbophyllum trimenii** (Hook. f.) J. J. Sm., Bull. Jard. Bot. Buitenzorg, II, 8: 28. 1912. *Cirrhopetalum trimenii* Hook. f. in Trimen, Handb. Fl. Ceyl. 4: 158. 1898.

Distribution: Montane zone.

* **Bulbophyllum wightii** Rchb. f. in Walper's, Ann. Bot. Syst. 6: 262. 1861. *Cirrhopetalum wightii* Thwaites, Enum. Pl. Zeyl. 299. 1861. *Cirrhopetalum grandiflorum* Wight, Ic. Pl. Ind. Or. 5: t. 1658. 1852. **Fig. 9c**

Distribution: Submontane zone.

Calanthe R. Br.

Bot. Reg. 7: t. 573. 1821, *nom. cons.*

Calanthe sylvatica (Thouars) Lindl., Gen. Sp. Orchid. Pl.: 250. 1833. *Centrosis sylvatica* Thouars, Orch. Iles. Aust. Afr. T. 35, 36. 1822. *Calanthe purpurea* Lindl., Gen. Sp. Orchid. Pl. 249. 1833.

Distribution: Montane and submontane zones.

Note: The name *Calanthe purpurea* Lindl. was recently synonymised with the widespread *C. sylvatica* (Thouars) Lindl. (World Checklist of Monocots, 2007).

Calanthe triplicata (Willemet) Ames, Philipp. J. Sci., 2: 326. 1907. *Orchis triplicata* Willemet, Usteri Ann. Bot. 18:52. 1796. *Limodorum veratrifolium* Willd., Sp. Pl. 4: 122. 1805. *Calanthe veratrifolia* (Willd.) Ker-Gawl., Bot. Reg. 9: t.720.1823.

Distribution: Montane zone.

Corymborkis Thouars

Nouv. Bull. Sci. Soc. Philom. Paris 1: 318. 1809.

Corymborkis veratrifolia (Reinw.) Blume, Coll. Orchid. 125. 1859. *Hysteria veratrifolia* Reinw., Nov. Pl. Ind. Gen. Syll. Pl. Nov. 2:15. 1825-26. *Corymbis veratrifolia* Rchb. f. in Flora 48: 184. 1865.

Distribution: Lowland wet to submontane zone.

Cheirostylis Blume

Bijdr. 413. 1825.

Cheirostylis flabellata Wight, Icon. Pl. Ind. Orient. 5(1): 16. t. 1727. 1851.

Distribution: Submontane zone.

Cheirostylis parvifolia Lindl., Edward's Bot. Reg. 25 (Misc.): 19. 1839.

Distribution: Submontane and montane zones.

Chiloschista Lindley

Edward's Bot. Reg. 18: t. 1522. 1832.

Chiloschista fasciata (F.v. Muell.) Seidenf. & Ormerod, Oper. Bot. 124: 64. 1995. *Sarcochilus fasciatus* F. v. Muell., Fragm. 5: 202. 1866. *Chiloschista pusilla* sensu Schltr., Fed. Repert. Beih. 4: 275. 1919. *Sarcochilus wightii* Hook. f., Fl. Brit. India 6: 37. 1890.

Distribution: Lowland wet to submontane zone.

Note: This species was wrongly called *Chiloschista pusilla* (W.) Schltr. by Schlechter who was influenced by Hooker's citation of some synonyms, especially *Epidendrum pusillum* Koen. (= *Taeniophyllum pusillum* (Willd.) Seidenf. & Ormerod, a Malesian entity) (Seidenfaden, 1995 a). Our species has been confused with the above entity. *C. fasciata* is restricted to Sri Lanka and Southern Deccan (Seidenfaden, 1995 b).

Chrysoglossum Blume

Bijdr. 337. 1825.

Chrysoglossum ornatum Blume, Bijdr. 338. 1825. *Ania maculata* Thwaites, Enum. Pl. Zeyl. 301. 1861. *Chrysoglossum maculatum* (Thwaites) Hook. f., Fl. Brit. India 5: 784. 1890.

Distribution: Submontane zone.

Cleisostoma Blume

Bijdr. 362. 1825.

Cleisostoma tenuifolium (L.) Garay, Bot. Mus. Leaflet. Harv. Uni. 23: 175. 1972. *Epidendrum tenuifolium* L., Sp. Pl. 2: 952. 1753. *Sarcanthus peninsularis* Dalz., Hooker's J. Bot. & Kew Misc. 3: 343. 1851.

Distribution: Lowland wet zone.

Coelogyne Lindley

Coll. Bot. t. 33. 1821

Coelogyne breviscapa Lindl., Fol. Orchid. *Coelogyne* 5: 4. 1854.

Distribution: Lowland wet and submontane zones.

Coelogyne odoratissima Lindl., Gen. Sp. Orchid. Pl. 41. 1830.

Distribution: Montane and submontane zones.

Coelogyne zeylanica Hook. f. in Trimen, Handb. Fl. Ceylon 4: 161. 1898. *Panisea zeylanica* (Hook. f.) Aver.,

Bot. Zhurn. SSSR. 73(3): 432. 1988.

Distribution: Submontane zone.

Note: The plant recorded and figured as *C. uniflora* Lindl. from South India by Joseph (1987) appears to represent *C. zeylanica* (Clayton, 2002).

Cottonia Wight

Icon. Pl. Ind. Orient. 5 (1): 21. 1851.

Cottonia peduncularis (Lindl.) Rchb.f., Cat. Orch. Samml. Schiller, ed. 3: 22. 1857. *Vanda peduncularis* Lindl., Gen. Sp. Orch. Pl. 216. 1833.

Distribution: Lowland wet to Northern and Eastern intermediate zones.

English: Bee orchid

Crepidium Blume

Bijdr. 387. 1825.

Crepidium purpureum (Lindl.) Szlach., Fragm. Flor. Geobot. Supp. 3: 131. 1995. *Microstylis purpurea* Lindl., Gen. Sp. Orch. Pl. 20. 1830. *Malaxis purpurea* (Lindl.) Kuntze, Rev. Gen. 2: 673. 1891.

Distribution: Lowland wet and submontane zones.

Cryptostylis R. Br.

Prodr. 317. 1810.

Cryptostylis archnites (Blume) Hassk., Cat. Bog. 48. 1844. *Zosterostylis archnites* Blume, Bijdr. 418. 1825.

Distribution: Submontane and montane zones.

Cyclopogon C. Presl

Reliq. Haenk. 1(2): 93, pl. 13. 1827.

Cyclopogon obliquus (J. J. Sm.) Szlach., Fragm. Florist. Geobot. 39 (2): 125. 1994. *Spiranthes obliqua* J. J. Sm., Bull. Dep. Agric. Indes Neerl. 43: 74. 1910. *Pelexia obliqua* (J.J. Sm.) Garay, Bot. Mus. Leaflet. 28(4): 345. 1982.

Distribution: Locality unknown.

Note: This is based on a specimen (*Jayaweera 3011*) deposited in Kew collected from Sri Lanka. This is a native species of neotropical countries but is found as an adventive in Hong Kong, Java, Samoa and Sri Lanka (Cribb & Ormerod, 1999; Ackerman, 2000).

Cymbidium Swartz

Nova Acta Regiae Soc. Sci. Upsal. 6: 70. 1799.

Cymbidium aloifolium (L.) Sw., Nova Acta Regiae Soc. Sci. Upsal. 6: 73. 1799. *Epidendrum aloifolium* L., Sp. Pl. 2: 953. 1753. *Epidendrum ensifolium* L., Sp. Pl. 2: 954. 1753. *Cymbidium haematodes* Lindl., Gen. Sp. Orch. Pl. 162. 1830.

Distribution: Lowland intermediate and dry zones.

Sinhala: Visha duli

Cymbidium bicolor Lindl., Gen. Sp. Orchid. Pl. 164. 1833.

Distribution: Lowland wet zone

Sinhala: Visha duli

Cymbidium ensifolium (L.) Sw., Nova Acta Regiae Soc. Sci. Upsal. 6: 77. 1799. subsp. **haematodes** (Lindl.) Du Puy & P. J. Cribb ex Govaerts, World Checklist Seed Pl. 3 (1): 20. 1999.

Distribution: Lowland wet zone.

Cyrtosia Blume

Bijdr. 396. 1825.

Cyrtosia javanica Blume, Bijdr. 396. 1825. *Galeola javanica* (Blume) Benth. ex Hook. f., Fl. Brit. India 6: 88. 1890.

Distribution: Submontane zone.

Dendrobium Swartz

Nova Acta Regiae Soc. Sci. Upsal. 6:82. 1799.

Dendrobium aphyllum (Roxb.) C. E. C. Fisher in Gamble, Fl. Madras 8:1416. 1928. *Limodorum aphyllum* Roxb., Pl. Corom. 1: 34, pl. 41. 1795. *Dendrobium macrostachyum* Lindl., Gen. Sp. Orch. Pl. 78. 1830.

Distribution: Lowland wet, submontane and intermediate zones.

Sinhala: Poson mal, Kaputu wesak mal

Note: The name has been changed according to Christenson & Wood (2003).

Dendrobium crumenatum Swartz, J. Bot. (Schrader) 2: 237. 1799.

Distribution: Lowland wet zone.

English: pigeon orchid, white dove orchid

Sinhala: sudu pareyi mal

Note: An adventive species, not native to Sri Lanka.

Dendrobium diodon Rchb. f., Linnaea 41: 89. 1877. *subsp. **diodon** **Fig. 10d**

Distribution: Montane and submontane zones.

Note: This species has been recorded from Kanniyakumari district, Tamil Nadu, India by Gopalan and Henry (1988) with a new subspecies (*D. diodon* subsp. *kodayarensis* Gopalan & Henry, Holotype: *Gopalan 81452*, CAL).

Dendrobium haemoglossum Thwaites, Enum. Pl. Zeyl. 429. 1864.

Distribution: Lowland wet and submontane zones.

Note: *D. haemoglossum* is closely related to *D. salaccense* and may prove to be a variant of it.

Dendrobium heterocarpum Wall. ex Lindl., Gen. Sp. Orchid. Pl. 78. 1830.

Distribution: Montane and submontane zones.

English: primrose orchid

* **Dendrobium maccarthiae** Thwaites, Bot. Mag. 81: t. 4886. 1855.

Distribution: Lowland wet zone.

Sinhala: Wesak mal

Note: The description in Lavarack *et al.* (2000:148) belongs to a different entity, probably a hybrid.

Dendrobium nutantiflorum A. D. Hawkes & A. H. Heller, Lloydia 20: 122. 1957. *Dendrobium nutans* Lindl., Gen. Sp. Orch. 90. 1830. non Presl 1827.

Distribution: Montane submontane zones.

Note: The name *D. nutans* Lindl. 1830 is homonymised by *D. nutans* Presl 1827, a different species.

Dendrobium panduratum Lindl., J. Proc. Linn. Soc., Bot. 3: 19. 1858. * subsp. **panduratum**

Distribution: Lowland wet and submontane zones.

Note: This subspecies has been recorded from India (Manilal and Sathish, 1985). Later, Gopalan and Henry (1990) described it as a new subspecies endemic to South India (*D. panduratum* Lindl. subsp. *villosum*).

Didymoplexis Griff.

Calcutta J. Nat. Hist. 4: 383, t. 17. 1844.

Didymoplexis pallens Griff., Calcutta J. Nat. Hist. 4: 383, t. 17. 1844.

Distribution: Lowland wet zone.

Note: This is based on a specimen (*D. Chatterjee 505*) deposited in CAL collected from Kankaniya Mullaha in Sri Lanka in 1956 (Misra, 2004). The identity of the specimen requires confirmation. Another two specimens from Peradeniya are deposited at PDA (Coll: K. M. Gunapala, 20 May 1982 and D. S. A. Wijesundara, June 1994).

Didymoplexis seidenfadenii Sathish & Ormerod in Manilal & Sathish, Orch. Memories 182. 2004.

Distribution: Lowland wet zone.

Note: This species has been recorded from Sri Lanka by C. S. Kumar and P. Ormerod (C. S. Kumar & K. S. Manilal, 2004).

Dienia Lindley

Bot. Reg. Sub t. 825. 1824.

Note: There are several recent revisions of the subtribe Malaxidae, especially on the genus *Malaxis* Sw. At present the above Sri Lankan genus has been segregated into three genera, *Dienia* Lindl. 1824, *Crepidium* Blume 1825 and *Seidenfia* Szlach. 2001 (Margonska & Szlachetko, 2001). However, the genus *Seidenfia* is a doubtful concept with erroneous typification. Therefore, we have decided to omit the generic concept *Seidenfia* from the present checklist. It is likely that nearly all the South-East Asian segregations of *Malaxis* will be considered to belong to a broad concept of *Dienia*.

Dienia ophrydis (J. König) Ormerod & Seidenf., Contrib. Orchid Fl. Thailand XIII: 18. 1997. *Epidendrum ophrydis* J. König in Retz., Observ. Bot. 6:46. 1771. *Malaxis latifolia* J. E. Sm. in Rees Cycl. 22: *Malaxis* n. 3. 1812. *Microstylis latifolia* (Sm.) J. J. Sm., Fl. Buitenz. 6: 248, fig. 185. 1905.

Distribution: Lowland wet and submontane zones.

Diplozentrum Lindley

Edwards Bot. Reg. 18: sub t. 1522. 1832.

Diplozentrum recurvum Lindl., Edward's Bot. Reg. 18: sub t. 1522. 1832.

Distribution: Submontane zone.

Diploprora Hook. f.

Fl. Brit. India 6: 26. 1890.

Diploprora championi (Lindl.) Hook. f., Fl. Brit. India 6: 26. 1890. *Cotonia championii* Lindl., Hooker's J. Bot. Kew Gard. Misc. 7: 35. 1855.

Distribution: Lowland wet zone.

Disperis Swartz

Kongl. Vetensk. Acad. Nya Handl. 21:218. 1800.

Disperis neilgherrensis Wight, Icon. Pl. Ind. Orient. 5: t. 1719. 1851. *Disperis zeylanica* Trimen, J. Bot. 23: 245. 1885. *Disperis walkeriae* Rchb. f., Linnaea 41: 101. 1877.

Distribution: Submontane zone.

Note: All Asian taxa of the genus *Disperis* were recently synonymised with the widespread *D. neilgherrensis* Wight (Kurzweil, 2005).

Epipogium Gmelin ex Borkhausen

Tent. Disp. Pl. German. 139. 1792.

Epipogium roseum (D. Don) Lindl., J. Proc. Linn. Soc., Bot. 1: 177. 1857. *Limodorum roseum* D. Don, Prodr. Fl. Nepal. 30. 1825. *Galera nutans* Blume, Bijdr. 416. 1825. *Epipogium nutans* (Blume) Rchb. f., Bonplandia 5: 36. 1857.

Distribution: Lowland wet zone.

Eria Lindley

Bot. Reg. 11: t. 904. 1825.

Note: The six Sri Lankan species traditionally placed in *Eria* would, according to a recent phylogenetic treatment (Cribb & Ng in Pridgeon *et al.* 2005), be placed in at least four genera. We feel that much more samplings are needed before these changes can be accepted. The Sri Lankan species (*E. articulata*, *E. braccata*, *E. muscicola* var. *oblonga*) would probably be placed in *Conchidium* Griff. but it seems to us that apart from having a somewhat similar habit that these taxa are not that closely related. Thus, we treat *Eria* in the traditional sense until a better circumscription of the various resurrected genera becomes available.

* **Eria articulata** Lindl., J. Linn. Soc., Bot. 3: 47. 1858.

Conchidium articulatum (Lindl.) Rauschert, Feddes Repert. Spec. Nov. Regni Veg. 94: 444. 1983. *Alvisia tenuis* Lindl., Fol. Orch. 1. 1859.

Distribution: Lowland wet zone.

Eria bicolor Lindl., Gen. Sp. Orchid. Pl. 65. 1830.

Distribution: Montane and submontane zones.

English: Lily of the valley orchid

Eria braccata (Lindl.) Lindl., J. Linn. Soc., Bot. 3: 46. 1858. *Dendrobium braccatum* Lindl., Gen. Sp. Orch. 75. 1830. *Conchidium braccatum* (Lindl.) Brieger, Orchideen 1(11-12): 751. 1981.

Distribution: Montane and submontane zones.

* **Eria lindleyi** Thwaites, Enum. Pl. Zeyl. 299. 1861.
Fig. 10f

Distribution: Lowland wet and submontane zones.

Eria muscicola (Lindl.) Lindl., J. Linn. Soc. Bot. 3: 47. 1858. var. **oblonga** Trimen, J. Ceyl. Br. As. Soc. 9: 88. 1885. *Dendrobium muscicola* Lindl., Gen. Sp. Orchid. Pl. 75. 1830. *Conchidium muscicola* (Lindl.) Rauschert, Feddes Repert. Spec. Nov. Regni Veg. 94: 444. 1983. *Eria velutina* Thwaites, Enum. Pl. Zeyl. 299. 1864, non Lindl. 1840.

Distribution: Lowland wet to montane zone.

Note: The Sri Lankan variation of this species may represent a separate species (Seidenfaden, 1982).

* **Eria thwaitesii** Trimen J. Ceyl. Br. As. Soc. 9: 88. 1885. *E. velutina* Thwaites, Enum. Pl. Zeyl. 299. 1864, non Lindl. *nom. illeg.* **Fig. 10a**

Distribution: Lowland wet and submontane zones.

* **Eria tricolor** Thwaites, Enum. Pl. Zeyl. 429. 1864.
Fig. 10c

Distribution: Submontane zone.

Erythrodes Blume

Bijdr. 410. 1825.

* **Erythrodes latiloba** Ormerod, Lindleyana 17 (4): 201. 2002. *Erythrodes humilis* non (Blume) J. J. Sm.: Jayaweera, Rev. Handb. Fl. Ceylon 2: 1981.

Distribution: Lowland wet and submontane zones.

Note: This species was confused with *E. humilis* (Blume) J. J. Sm. and *E. blumei* (Lindl.) Schltr. which are two closely related Malayan species. By examining the specimens (*Sledge 1146*, *C.P. 598* and *Macrae 59*) in K and BM, it was distinguished as a new species (Ormerod, 2002).

Eulophia R. Br. ex LindleyBot. Reg. 7: t. 573. 1821. *nom. cons.*

Eulophia epidendraea (J. Koenig ex Retz.) C. E. C. Fischer in Gamble, Fl. Madras 1434. 1928. *Serapias epidendraea* J. König in Retz., Obs. Bot. 6: 65. 1791. *Limodorum virens* Roxb., Pl. Corom. T. 38. 1795. *Eulophia virens* (Roxb.) R. Br. ex Lindl., Bot. Reg. 7: sub t. 573. 1821.

Distribution: Lowland intermediate and dry zones.

Eulophia graminea Lindl., Gen. Sp. Orchid. Pl.: 182. 1833.

Distribution: Lowland intermediate zone.

Eulophia pulchra (Thouars) Lindl., Gen. Sp. Orchid. Pl.: 182. 1833. *Limodorum pulchrum* Thouars, Orch. Iles. Austr. Afr. Pls. 43, 47. 1822. *Eulophia macrostachya* Lindl., Gen. Sp. Orch. 183. 1833.

Distribution: Lowland wet and submontane zones.

Eulophia spectabilis (Dennst.) Suresh in Nicolson, Suresh & Manilal, Interpret. Van Rheede's Hort. Malab.: 300. 1988. *Wolffia spectabilis* Dennst., Schlüssel Hort. Malab. 11, 25, 38. 1818. *Eulophia nuda* Lindl., Gen. Sp. Orch. Pl. 180. 1833.

Distribution: Lowland wet zone.

Eulophia zollingeri (Rchb. f.) J. J. Sm., Orch. Java.

228. 1905. *Cyrtopera zollingeri* Rchb. f. in Bonplandia 5: 38. 1857. *C. sanguinea* Lindl., J. Linn. Soc., Bot. 3: 32. 1858. *Eulophia sanguinea* (Lindl.) Hook. f., Fl. Brit. India 6: 8. 1890.

Distribution: Lowland wet and submontane zones.

Flickingeria A. D. Hawkes
Orchid Weekly 2: 251. 1961.

Flickingeria macraei (Lindl.) Seidenf., Dansk Bot. Ark. 34: 39. 1980. *Dendrobium macraei* Lindl., Gen. Sp. Orchid. Pl. 75. 1830. *Ephemerantha macraei* (Lindl.) P. F. Hunt & Summerh., Taxon 10: 105. 1961.

Distribution: Lowland wet and submontane zones.

Sinhala: Jata makuta

Gastrochilus D. Don
Prodr. Fl. Nepal. 32. 1825.

Gastrochilus acaulis (Lindl.) Kuntze, Revis. Gen. Pl. 2: 661. 1891. *Cleisostoma acaule* Lindl., Gen. Sp. Orch. Pl. 227. 1833. *Saccolabium acaule* (Lindl.) Hook. f., Fl. Brit. India 6: 61. 1890.

Distribution: Lowland wet to submontane zone

Gastrodia R. Br.
Prodr. 330. 1810.

* **Gastrodia zeylanica** Schltr., Repert. Spec. Nov. Regni Veg. 3: 77. 1906. *Gastrodia javanica* sensu Thwaites non (Blume) Lindl. 1840.

Distribution: Lowland wet zone.

Note: The record from Bangladesh (Khan and Halam, 1989), after examining the detailed drawing, is found similar to a *Didymoplexis* species, possibly *D. pallens* Griff. by the following characters: branching habit of stem, lateral sepals deeply separated from petals and dorsal sepal and bilobed lip. Therefore, *G. zeylanica* is retained as an endemic species. The figure in Jayaweera (1981: 335) and two drawings deposited at PDA are not *G. zeylanica* but a *Didymoplexis* species (C.P. 3463).

Geodorum Jackson
Bot. Repos. 10: t. 626. 1811.

Geodorum densiflorum (Lam.) Schltr., Repert. Spec. Nov. Regni Veg., Beih. 4: 259. 1919. *Limodorum densiflorum* Lam., Encycl. 3: 576. 1792. *Geodorum dilatatum* R. Br., Hort. Kew. (ed. 2). 5: 207. 1813.

Distribution: Lowland wet and submontane zones.

Geodorum recurvum (Roxb.) Alston in H. Trimen, Handb. Fl. Ceyl. 6 (Suppl.): 276. 1931. *Limodorum*

recurvum Roxb., Pl. Corom. 1: 33, pl. 39. 1795.

Distribution: Locality unknown.

Note: Two specimens of *G. recurvum* deposited at Kew collected by Walker from Sri Lanka were without precise locality.

Goodyera R. Br.

in W. T. Aiton, Hortus Kew. 5: 197. 1813.

Goodyera fumata Thwaites, Enum. Pl. Zeyl. 314. 1861.

Distribution: Lowland wet and submontane zones.

Goodyera procera (Ker-Gawl.) Hook., Exot. Fl. 1: t. 39. 1823. *Neottia procera* Ker-Gawl., Bot. Reg. 8:T.639. 1822.

Distribution: Submontane zone.

* **Goodyera stolidifera** Ormerod, Oasis suppl. 3: 6. 2004. *Rhamphidia elongata* auct. non (Lindl.) Lindl.: Thwaites, Enum. Pl. Zey. 1: 313. 1861. *Hetaeria elongata* auct. non (Lindl.) Hook. f.: Hook. f., Fl. Brit. India 6: 197. 1890; Trimen, Handb. Fl. Ceyl. 4: 210. 1898; Jayaweera, Rev. Handb. Fl. Ceyl. 2: 296. fig. 131. 1981.

Distribution: Locality unknown.

Note: For quite sometime the only material (C. P. 2739, K) of this taxon had been wrongly called *Hetaeria elongata* (Lindl.) Hook. f. (now *H. finlaysoniana* Seidenf.) distributed from Peninsular Malaysia to Thailand, Myanmar and possibly China. A critical study of the material at K convinced the correct generic placement and novelty (Ormerod, 2004).

Habenaria Willd.
Sp. Pl. 4: 44. 1805.

Habenaria acuminata (Thwaites) Trimen, J. Ceyl. Br. Roy. Soc. 9: 91. 1885. *Ate acuminata* Thwaites, Enum. Pl. Eyl. 309. 1861. **Fig. 10b**

Distribution: Submontane zone.

Habenaria barbata Wight ex Hook. f., Fl. Brit. India 6: 133. 1890. *Ate virens* Lindl., Gen. Sp. Orch. Pl. 327. 1835. *Habenaria virens* non A. Rich & Galeotti: Abeywickrama, Ceylon J. Sci. Bio. Sci. 2: 1959; Hunt & Summerhayes, Kew Bull. 20(1): 51. 1966. **Fig. 10e**

Distribution: Submontane, montane and eastern intermediate zones.

Note: This species was originally named *Ate virens* Lindl. Wight (1845) named it as *Habenaria barbata* nom. nud., by using a separate specimen. Later, Joseph Hooker validated the name *H. barbata* (1890). Abeywickrama (1959) and P.F. Hunt &

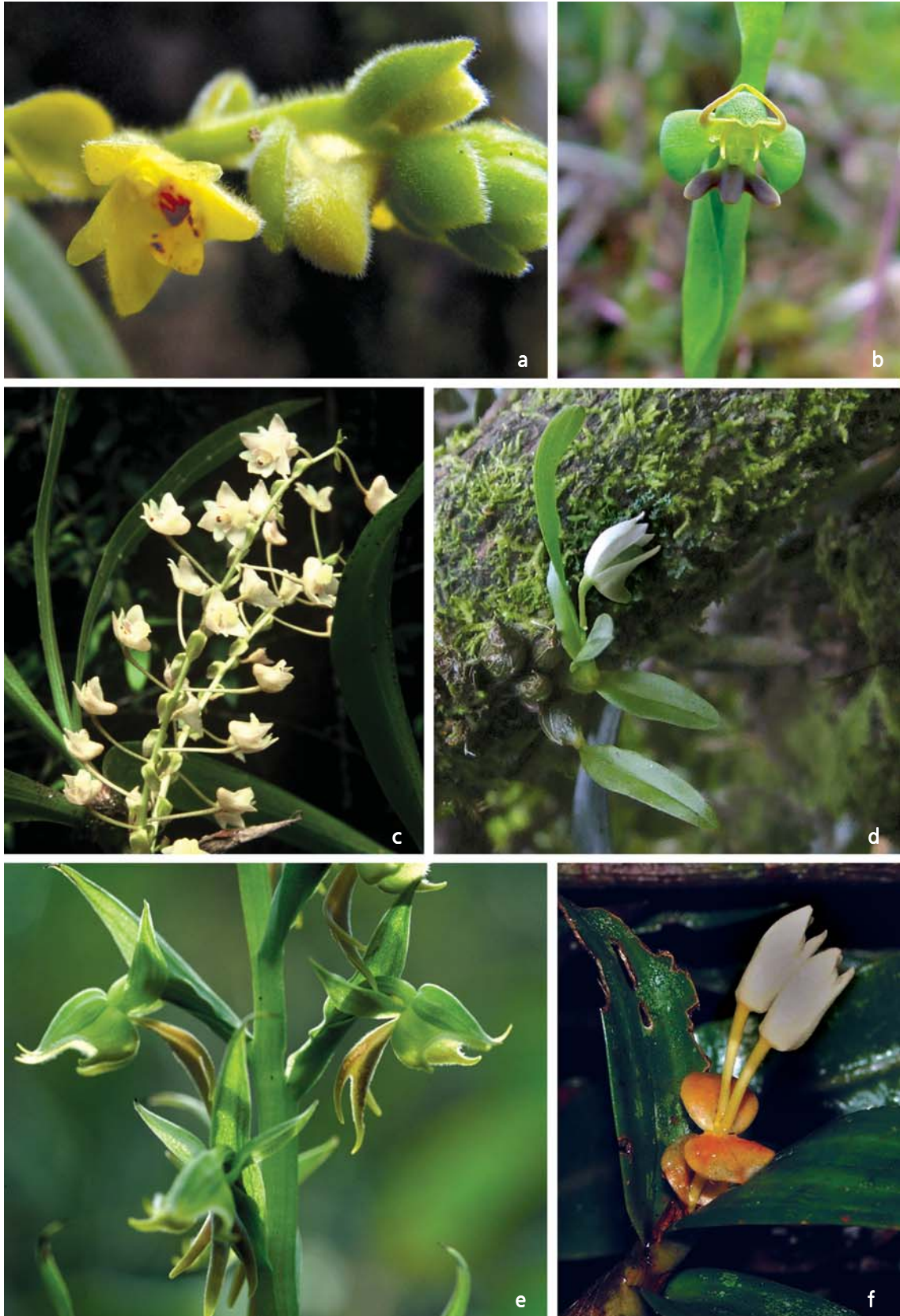


Figure 10. a. *Eria thwaitesii* Trimen; b. *Habenaria acuminata* (Thwaites) Trimen; c. *Eria tricolor* Thwaites; d. *Dendrobium diodon* Rchb. f.; e. *Habenaria barbata* Wight ex Hook. f.; f. *Eria lindleyi* Thwaites (photographs: a-e by S.S. Fernando; f by P. Samarawikrama).

Summerhayes in 1966 independently transferred it as *H. virens* (Seidenfaden in Matthew, 1999). Abeywickrama's transfer (1959) was illegitimate because of wrong basionym used (Seidenfaden in Matthew, 1999) and P.F. Hunt & Summerhayes' transfer is a homonym of *H. virens* A. Rich & Galeotti (1845), a Mexican species (World Checklist of Monocots, 2007).

Habenaria crinifera Lindl., Gen. Sp. Orchid. Pl. 323 1835.

Distribution: Lowland wet zone.

Sinhala: Nari Lata

* **Habenaria dichopetala** Thwaites, Enum. Pl. Zeyl. 309. 1861.

Distribution: Dry zone.

* **Habenaria dolichostachya** Thwaites, Enum. Pl. Zeyl. 309. 1861.

Distribution: Montane zone.

Habenaria macrostachya Lindl., Gen. Sp. Orchid. Pl. 307. 1835.

Distribution: Lowland wet, intermediate zone and dry zones.

Habenaria plantaginea Lindl., Gen. Sp. Orch. Pl. 323. 1835.

Distribution: Intermediate and dry zones.

* **Habenaria pterocarpa** Thwaites, Enum. Pl. Zeyl. 309. 1861.

Distribution: Submontane zone.

* **Habenaria rhynchocarpa** (Thwaites) Trimen, Syst. Cat. Fl. Pl. Ceylon 91. 1885. *Platanthera rhynchocarpa* Thwaites, Enum. Pl. Zeyl. 310. 1861.

Distribution: Submontane zone.

Habenaria roxburghii Nicolson, Fl. Hassan Distr. 834. 1976. *Habenaria platyphylla* Spreng., Syst. Veg. 3: 690. 1826.

Distribution: Eastern intermediate zone.

Sinhala: Sudu koka Mala

Note: *H. roxburghii* Nicolson is a new record for Sri Lanka (Fernando and Gunasekara, 2005) but its author was incorrectly cited as R. Br.

Habenaria viridiflora (Sw.) Spreng. Syst. 3: 691. 1826.

Orchis viridiflora Rottler ex Sw., Kongl. Vetensk. Acad. Nya Handl. 21: 206. 1800.

Distribution: In all zones.

Hetaeria Blume

Bijdr. 409. 1825.

Hetaeria oblongifolia Blume, Bijdr. 410. 1825. *Rhamphidia gardneri* Thwaites, Enum. Pl. Zeyl. 313. 1861. *Hetaeria gardneri* (Thwaites) Trimen, Cat. Pl. Ceyl. 1: 90. 1885.

Distribution: Lowland wet zone.

Note: This taxon was recently synonymised with the widespread *H. oblongifolia* Blume (Ormerod, 2004).

Ipea Lindley

Gen. Sp. Orchid. Pl. 124. 1831.

* **Ipea speciosa** Lindl., Gen. Sp. Orchid. Pl. 124. 1831. **Fig. 11a**

Distribution: Montane and submontane zones.

English: Daffodil orchid

Sinhala: Naga meru ala

Liparis A. Rich.

De Orchid. Eur. 30. 1817, *nom. cons.*

Liparis atropurpurea Lindl., Gen. Sp. Orchid. Pl. 28. 1830.

Distribution: Montane and submontane zones.

Liparis barbata Lindl., Gen. Sp. Orchid. Pl. 27. 1830. *Liparis wrayi* Hook. f., Fl. Brit. India 6:181. 1890.

Distribution: Submontane zones.

Note: *L. barbata* was described from a solitary specimen sent by Macrae to Lindley, which supposedly had hairs on the lip (Lindley, 1830-1840). But later publications did not mention hairiness on the lip (Trimen 1898, Hooker 1888-1890, Ormerod, 2005a). In Alston (1931: 272) and Jayaweera's (1981:55) treatments an entirely different species is described as *L. barbata*. Examination of the type (*Macrae 6*, K-L) proved that the lip lacked hairs and that many entities (including *L. wrayi* Hook. f.) were synonyms. *L. barbata* is a widespread species distributed from Sri Lanka to Samoa (Ormerod, 2005a).

* **Liparis brachyglottis** Rchb. f. ex Trimen, J. Ceyl. Br. AS. Soc. 9: 87. 1885.

Distribution: Submontane zone.

Liparis cespitosa (Lam.) Lindl., Bot. Reg. 11 sub t. 882. 1825. *Epidendrum cespitosum* Lam., Encycl. Meth. Bot. 1: 87. 1783. *Liparis obscura* Hook. f., Hooker's Icon. Pl. 19: t. 1886. 1889.

Distribution: Lowland wet and submontane zones.

Note: *L. cespitosa* (Lam.) Lindl. is the correct name for

the taxon based on *Epidendrum cespitosum* Lam. 1783. In Jayaweera (1981) and Senaratne (2001), it is incorrectly cited as *L. caespitosa* (Thouars) Lindl. 1825.

Liparis elliptica Wight, Icon. Pl. Ind. Orient. 5: t. 1735. 1851.

Distribution: Submontane zone.

Liparis nervosa (Thunb. ex Murray) Lindl., Gen. Sp. Orchid. Pl. 26. 1830. *Ophrys nervosa* Thunb. ex Murray, Syst. Veg. (ed. 14). 814. 1784.

Distribution: Submontane zone.

* **Liparis thwaitesii** Hook. f., Hooker's Icon. Pl. 21: t. 2006. 1890. *L. barbata* non Lindl., Jayaweera, Rev. Handb. Fl. Ceyl. 2: 55. 1981.

Distribution: Lowland wet and submontane zones.

Note: This was described as a unifoliate species based on Thwaites, CP 3179 (K). We think this is an error that arose from incomplete vegetative material because the two isotypes at PDA are specimens with two (rarely three) leaves. Furthermore, the flowers have a suborbicular (not late obovate or cuneate-oblong as originally described) lip. The figure called *L. barbata* Lindl. by Jayaweera (1981: 56) represents *L. thwaitesii*. Further studies are required of the type specimens in the *L. wightiana/thwaitesii* complex. However, it seems possible that *L. trimenii* Ridley is not a synonym of *L. wightiana* but an earlier name for *L. thwaitesii*.

Liparis viridiflora (Blume) Lindl., Gen. Sp. Orchid. Pl. 31. 1830. *Malaxis viridiflora* Blume, Bijdr. 8: 392. 1825. *Liparis longipes* Lindl., Gen. Sp. Orchid. Pl. 30. 1830.

Distribution: Lowland wet and submontane zones.

Liparis walkeriae R. Graham, Edinburgh New Philos. J. 20: 194. 1836.

Distribution: Montane zone.

Liparis wightiana Thwaites, Enum. Pl. Zeyl. 295. 1861. *Liparis trimenii* Ridley, J. Linn. Soc., Bot. 24: 350. 1888.

Distribution: Montane and submontane zones.

Note: See notes under *L. thwaitesii* concerning the synonymy of this species.

Luisia Gaudich.

Voy. Uranie: 426. 1829.

Luisia birchea Blume, Rumphia 4: 50. 1849. *Luisia tenuifolia* auct. non (L.) Blume: Hook. f., Fl. Brit. India 6: 24. 1890.

Distribution: Northern and Eastern intermediate zones.

Note: This species was first collected from Nilgiris and described as a separate genus *Birchea* by A. Richard (1841). Later, Blume transferred it to its current position (Sathish & Manilal, 2004). Basionym of *L. tenuifolia* (L.) Blume 1848 is *Epidendrum tenuifolium* L. 1753. It is not a true *Luisia* but is now known as *Cleisostoma tenuifolium* (L.) Garay.

Luisia zeylanica Lindl. Fol. Orch. Luisia 3. 1853. *Luisia tristis* Hook. f., Fl. Brit. India 6: 25. 1890. *L. teritifolia* auct. non Gaudich.: Jayaweera, Rev. Handb. Fl. Ceyl. 2: 210. 1981.

Distribution: Lowland wet to Submontane zone.

Note: *L. zeylanica* Lindl. was based on Macrae's collection from Sri Lanka. *L. teritifolia* Gaudich does not occur in Sri Lanka or India.

Malaxis Swartz

Prodr. 8.119. 1788.

Malaxis densiflora (A. Rich.) Kuntze, Revis. Gen. Pl. 2: 673. 1891. *Liparis densiflora* A. Rich., Ann. Sci. Nat. (Ser.2) 15:18. 1841. *Seidenfia densiflora* (A. Rich.) Szlach., Fragm. Flor. Geobot., Suppl. 3:122. 1995. *Microstylis versicolor* auct. non Lindl.: Wight, Ic. Pl. Ind. Or. 9. t. 901. 1844-45.

Distribution: Submontane zone.

* **Malaxis discolor** (Lindl.) Kuntze, Revis. Gen. Pl. 2: 673. 1891. *Microstylis discolor* Lindl., Gen. Sp. Orchid. Pl. 20. 1830. *Seidenfia discolor* (Lindl.) Szlach., Fragm. Flor. Geobot., Suppl. 3:122. 1995.

Distribution: Lowland wet zone.

* **Malaxis thwaitesii** Bennet, Indian J. Forest. 5: 326. 1982. *Microstylis lancifolia* Thwaites, Enum. Pl. Zeyl. 297. 1864. *Malaxis lancifolia* (Thwaites) Kuntze, Revis. Gen. Pl. 2: 673. 1891, non J. E. Sm. 1812. *Seidenfia lancifolia* (Thwaites) Szlach., Fragm. Flor. Geobot., Suppl. 3:122. 1995.

Distribution: Lowland wet zone.

Note: The name *M. lancifolia* (Thwaites) Kuntze 1891 is a homonym of *M. lancifolia* J. E. Sm. 1812. Therefore, we use the name proposed by Bennett.

Malaxis versicolor (Lindl.) Abeyw., Ceylon J. Sci., Biol. Sci. 2: 247. 1959. *Microstylis versicolor* Lindl. Gen. Sp. Orch. Pl. 21. 1830. *Seidenfia versicolor* (Lindl.) Marg. & Szlach., Pol. Bot. Journ. 46 (1): 56. 2001. *Microstylis rheedii* (Sw.) Lindl., Gen. Sp. Orch. Pl. 21. 1830, p. p.; Wight, Ic. Pl. Ind. Or. T. 902.

1844-45.

Distribution: Lowland wet zone to montane forests.

Nervilia Comm. ex Gaudich.

Voy. Uranie 422. 1829.

Nervilia juliana (Roxb.) Schlechter, Bot. Jahrb. Syst. 45: 402. 1911. *Epipactis juliana* Roxb., Fl. Ind. 3:453. 1832.

Distribution: Intermediate zone.

Note: There is no confirmed specimen of this species at PDA. Therefore, the occurrence of this species is doubtful. Yet at PDA, several sheets with differing foliar morphologies from different localities are found. This has also been stated by J.D. Hooker (1898: 255).

Oberonia Lindley

Gen. Sp. Orchid. Pl.: 15. 1830.

Note: Apart from the species enumerated here, two more species have been included under the genus *Oberonia*, *O. bicornis* Lindl. (Senaratne, 2001) and *O. verticillata* Wight (Seidenfaden, 1968). Since there are no precise records of these species as herbarium specimens or in literature, we decided to omit the species from the present list.

* **Oberonia claviloba** Jayaweera, Bot. Mus. Leaflet. Harv. Uni. 20: 98. 1963.

Distribution: Submontane zone.

* **Oberonia dolabrata** Jayaweera, Bot. Mus. Leaflet. Harv. Uni. 20: 96. 1963.

Distribution: Submontane zone.

Oberonia forcipata Lindl., Fol. Orchid. *Oberonia*: 2. 1859.

Distribution: Submontane zone.

Oberonia fornicata Jayaweera, Bot. Mus. Leaflet. Harv. Uni. 20: 106. 1963.

Distribution: Submontane zone.

* **Oberonia longibracteata** Lindl., Gen. Sp. Orchid. Pl. 15. 1830.

Distribution: Montane and submontane zones.

* **Oberonia quadrilatera** Jayaweera, Bot. Mus. Leaflet. Harv. Uni. 20: 93. 1963.

Distribution: Submontane zone.

Oberonia recurva Lindl., Edward's Bot. Reg. 25 (Misc.): 14. 1839.

Distribution: Montane and submontane zones.

* **Oberonia scyllae** Lindl., Fol. Orchid. *Oberonia*: 5. 1859. **Fig. 11c**

Distribution: Submontane zone.

Oberonia tenuis Lindl., Fol. Orchid. *Oberonia*: 3. 1859.

Distribution: Lowland wet and submontane zones.

Oberonia thwaitesii Hook. f., Fl. Brit. India 5: 678. 1890.

Distribution: Lowland intermediate zone.

Note: This species was recorded by Manilal and Sathish (1984) from Quilon district in Kerala, India (*Sivadasan 15225*, CALI).

* **Oberonia truncata** Lindl., Fol. Orchid. *Oberonia*: 3. 1859.

Distribution: Submontane zone.

* **Oberonia wallie-silvae** Jayaweera, Bot. Mus. Leaflet. Harv. Uni. 20: 101. 1963.

Distribution: Submontane zone.

* **Oberonia weragamaensis** Jayaweera, Bot. Mus. Leaflet. Harv. Uni. 20: 103. 1963.

Distribution: Lowland wet zone.

Oberonia wightiana Lindl., Edward's Bot. Reg. 25 (Misc.): 14. 1839.

Distribution: Montane and submontane zones.

Oberonia zeylanica Hook. f., Hooker's Icon. Pl. 18: t. 1782. 1888.

Distribution: Submontane zone.

Octarrhena Thwaites

Enum. Pl. Zeyl. 305. 1861.

Octarrhena parvula Thwaites, Enum. Pl. Zeyl. 305. 1861.

Distribution: Submontane and montane zones.

Papilionanthe Schlechter

Orchis 9: 78. 1915.

Papilionanthe cylindrica (Lindl.) Seidenf., Descr. Epidendrorum J.G. König 33. 1995. *Aerides cylindrica* Lindl., Gen. Sp. Orch. Pl. 340. 1833, excl. syn. *Papilionanthe subulata* auct. non (Willd.) Garay: Jayaweera, Rev. Handb. Fl. Ceylon. 2: 202. 1981.

Distribution: Submontane and montane zones.

Note: The name *P. subulata* (Willd.) Garay 1974 is based on *Epidendrum subulatum* Koenig and

incorrectly used for our species, *P. cylindrica* (Lindl.) Seidenf. (Seidenfaden, 1995a)

Peristylus Blume

Bijdr. 404. 1825, *nom. cons.*

Peristylus aristatus Lindl., Gen. Sp. Orchid. Pl. 300. 1835.

Distribution: Submontane zone.

Note: This species with small undulate leaves was described based on Macrae's specimen (*Macrae 56*) collected from Peradeniya, Sri Lanka. However, only flower buds of this specimen remain and Lindley's sketch on the type sheet is not a detailed one (Seidenfaden, 1977). Jayaweera (1981: 370) illustrated a specimen similar to *Macrae 56* with subequal sidelobes and midlobe. Yet another specimen with a much shorter midlobe and much larger leaves (*Kostermann 27104, G*) was also found collected from Kandy, Sri Lanka in 1978. It was identified as *P. gracilis* Blume (Swiss Orchid Foundation, 2007). *C.P. 3081(K)* was identified as *P. aristatus* Lindl. This species has a much shorter spur and a pair of lobules at the base of the lip (spur of *P. gracilis* is twice as long as the length of the dorsal sepal and does not have lobules at the base of lip). The later entity is clearly different from *P. gracilis* and possibly belongs to a new species, but further materials are needed for confirmation.

* **Peristylus brevilobus** Thwaites, Enum. Pl. Zeyl. 311. 1861. *Habenaria breviloba* (Thwaites) Trimen, J. Ceyl. Br. Roy. As. Soc. 9: 91. 1885

Distribution: Submontane zone.

Peristylus cubitalis (L.) Kraenzlin, Orchid. Gen. Sp. Pl. 1: 502. 1898. *Orchis cubitalis* L., Sp. Pl. 2: 940. 1753. *Habenaria cubitalis* (L.) R. Br., Prodr. 12. 1810.

Distribution: Submontane zone.

Peristylus densus (Lindl.) Santapau & Kapadia, J. Bombay Nat. Hist. Soc. 57: 128. 1960. *Coeloglossum densum* Lindl., Gen. Sp. Orch. Pl. 302. 1832.

Distribution: Lowland wet zone.

Note: There is a specimen (*Laegard 13962*) deposited in AAU collected from Sinharaya (Sinharaja forest), Sri Lanka (Seidenfaden, 1999).

* **Peristylus gardneri** (Hook. f.) Kraenzlin, Orchid. Gen. Sp. 1: 506. 1898. *Habenaria gardneri* Hook. f., Fl. Brit. India 6:158. 1890.

Distribution: Montane zone.

Peristylus plantagineus Lindl., Gen. Sp. Orchid. Pl.

300. 1835. *Habenaria wightii* Trimen, J. Ceyl. Br. Roy. As. Soc. 9: 91. 1885.

Distribution: Submontane zone.

Peristylus spiralis A. Rich., Ann. Sci. Nat., Bot., II, 15: 69. 1841. *Habenaria torta* Hook. f., Fl. Brit. India 6:159. 1890.

Distribution: Submontane zone.

* **Peristylus trimenii** (Hook. f.) Abeywick., Ceylon J. Sci., Biol. Sci. 2: 151. 1959. *Habenaria trimenii* Hook. f., Fl. Ceylon. 4: 233. 1898. **Fig. 11b**

Distribution: Eastern intermediate zone.

Phaius Loureiro

Fl. Cochinch. 529. 1790.

Phaius luridus Thwaites, Enum. Pl. Zeyl. 300. 1861.

Distribution: Lowland wet zone.

Note: This species is also reported from India (Abraham & Vatsala, 1981; Sathish Kumar & Manilal, 2004).

Phaius wallichii Lindl. in Wallich, Pl. Asiat. Rar. 2: 46, t 158. 1831. *P. tankervilleae* non (Banks ex L'Hérit.) Blume: Jayaweera, Rev. Handb. Fl. Ceylon 2: 153. 1881. **Fig. 11d**

Distribution: Montane and submontane zones.

English: Star orchid

Note: Both *P. wallichii* Lindl. and *P. tankervilleae* (Banks ex L'Hérit.) Blume were considered one and the same species but were recently discovered to be two different, closely related species. Sri Lankan specimens at K fell under *P. wallichii* Lindl. (Cribb *et al.* 2004).

Phalaenopsis Blume

Bijdr. 294. 1825.

Note: The genus *Kingidium* P.F. Hunt is now placed under this genus (Christenson, 2002).

Phalaenopsis deliciosa Rchb. f., Bonplandia 2: 93. 1854. subsp. **deliciosa**. *Kingidium deliciosum* (Rchb. f.) Sweet, Amer. Orch. Soc. Bull. 39:1095. 1970. *Phalaenopsis deliciosa* Rchb. f., Bonplandia 2: 93. 1854. *P. wightii* Rchb. f., Bot. Zeit. 20: 214. 1862. *Doritis wightii* (Rchb. f.) Benth. ex Hook. f., Fl. Brit. India 6: 32. 1890. *Aerides latifolium* Thwaites, Enum. Pl. Zeyl. 429. 1864.

Distribution: Lowland wet zone.

Phalaenopsis mysorensis Saldanha, Ind. For. 100: 571. 1974.

Distribution: Isolated hilltops in intermediate and dry zones.

Note: This species was found on some isolated hills in the intermediate zone of Sri Lanka. Specimens are deposited at PDA (*S.S.-2004-1*, *S.S.-2004-2*). Previously, it was considered as endemic to a narrow range in South India (Christenson, 2006).

Pholidota Lindley ex Hooker

Exot. Fl. 2: t. 138. 1825.

Pholidota imbricata Lindl. in Hooker, Exot. Fl. 2: t. 138. 1825. *Pholidota pallida* non Lindl.: Jayaweera, Rev. Handb. Fl. Ceylon 2: 120. 1951.

Distribution: Lowland wet and submontane zones.

English: necklace orchid

Sinhala: Nari ala

Podochilus Blume

Bijdr. 295. 1825.

Podochilus falcatum Lindl., Gen. Sp. Orchid. Pl. 234. 1833.

Distribution: Submontane zone.

Sinhala: Maha Patma

Podochilus malabaricum Wight, Icon. Pl. Ind. Orient. 5: t. 1748, f. 2. 1851.

Distribution: Lowland wet to submontane zone.

Sinhala: Maha Patma

* **Podochilus saxatile** Lindl., Gen. Sp. Orchid. Pl. 235. 1833.

Distribution: Lowland wet zone.

Sinhala: Kuda Patma

Phreatia Lindley

Gen. Sp. Orchid. Pl. 63. 1830.

Phreatia elegans Lindl., Gen. Sp. Orchid. Pl. 63. 1830.

Distribution: Submontane and montane zones.

* **Phreatia jayaweerae** Ormerod, Taiwaniana 50 (3): 185. 2005.

Distribution: Submontane zone.

Note: A new species endemic to Sri Lanka (Ormerod, 2005).

Polystachya Hook.

Exot. Fl. 2: t. 103. 1824, *nom. cons.*

Polystachya concreta (Jacq.) Garay et Sweet, Orquideologia 9: 206. 1974. *Epidendrum concretum* Jacq., Enum. Pl. 30. 1760.

Distribution: Intermediate, lowland wet, submontane and montane zones.

Pomatocalpa Breda

Gen. Sp. Orchid. Asclep. III: t. 15. 1827.

Pomatocalpa maculosum (Lindl.) J. J. Sm., Natuurw. Tijdschr. Ned. - Indië 72: 105. 1912. subsp. **maculosum**. *Cleisostoma maculosum* Lindl., Gen. Sp. Orch. 227. 1833. *Cleisostoma decipiens* Lindl., Edwards's Bot. Reg. 30: Misc. 11. 1844.

Distribution: Lowland wet zone.

Note: Endemic status of this species has changed because of the recent studies of the genus by Watthana (2006, 2007).

Pomatocalpa spicatum Breda, Gen. Sp. Orchid. Asclep. Fasc. III t. 15. 1829.

Distribution: Lowland wet zone.

Note: Names and endemic status of this species have changed as a result of the recent studies of the genus by Watthana (2006, 2007).

Pteroceras Van Hasselt ex Hassk.

Flora 25 (2 Beibl.): 6. 1842.

* **Pteroceras viridiflorum** (Thwaites) Holttum, Kew Bull. 14: 272. 1960. *Aerides viridiflorum* Thwaites, Enum. Pl. Zeyl. 430. 1864. *Sarcochilus viridiflorus* (Thwaites) Hook. f., Fl. Brit. India 6: 38. 1890.

Distribution: Submontane and montane zones.

Note: According to Pedersen (1993:55) taxonomic affinity of *P. viridiflorum* (Thwaites) Holttum is unclear, but it has been recognized as an endemic taxon to Sri Lanka. When citing specimens, Jayaweera has confused the above with an Indian taxon, *Loxoma viridiflora* (Dalz.) Pradhan, a clearly different entity.

Rhynchostylis Blume

Bijdr. 285. 1825.

Rhynchostylis retusa (L.) Blume, Bijdr. 286. 1825. *Epidendrum retusum* L., Sp. Pl. 2: 953. 1753.

Distribution: Eastern Intermediate zone.

English: Batticaloa orchid, Fox-tail orchid

Sinhala: Gurulu Raja

Robiquetia Gaudich.

Voy. Uranie; 426. 1829.

* **Robiquetia brevifolia** (Lindl.) Garay, Bot. Mus. Leaf. Harv. Uni. 23: 196. 1972. *Saccolabium brevifolium* Lindl., Gen. Sp. Orch. 225. 1833.

Distribution: Montane and submontane zones.



Figure 11. a. *Ipsea speciosa* Lindl. ; b. *Peristylus trimenii* (Hook. f.) Abeywick.; c. *Oberonia scyllae* Lindl.; d. *Phaius wallichii* Lindl.; e. *Robiquetia rosea* (Lindl.) Garay; f. *Zeuxine reginasilvae* Ormerod (photographs: a, f by K. Gunawardhana; b-e by S.S. Fernando).

Robiquetia gracilis (Lindl.) Garay, Bot. Mus. Leaflet. Harv. Uni. 23: 197. 1972. *Saccolabium gracile* Lindl., Gen. Sp. Orchid. Pl. 225. 1833.

Distribution: Submontane zone.

Robiquetia rosea (Lindl.) Garay, Bot. Mus. Leaflet. Harv. Uni. 23: 197. 1972. *Saccolabium roseum* Lindl., J. Linn. Soc., Bot. 3: 36. 1859. **Fig. 11e**

Distribution: Submontane zone.

Note: This species has been recorded from India (Bhat, 2000), but the plant figure does not match exactly with the Sri Lankan material.

* **Robiquetia virescens** Ormerod et Fernando, *sp. nov.* **Fig. 12**

R. virescens (Gardner ex Lindl.) Jayaweera, Rev. Handb. Fl. Ceylon 2: 255, 1981. *nom. illeg.* *Saccolabium virescens* Gardner ex Lindl., J. Linn. Soc. Bot. 3: 35. 1858. *nom. nud.*

Affinis *R. brevifolia* (Lindl.) Garay sed petalis floribus oblongis ad oblongo-ellipticis (non oblique late obovatis) et ostium labello late obliquus (non brevipatens) differt.

Type: Sri Lanka, Kandy district, Rangala, Corbet's Gap, 1290 m, 29 March 1961, D.M.A. Jayaweera 2048 (holotype with sketch, PDA; isotype: PDA).

Epiphytic herb. Roots terete, elongate, emerging from nodes. Stem slender, terete, weakly flexuous, laxly 5-8-leaved, 5-12 cm long, 0.2-0.3 cm thick; internodes covered by shallowly ribbed, coriaceous, tubular sheaths. Leaves oblong-ligulate to linear-ligulate, apex equally to inequally, obtusely bilobed, thinly coriaceous, 4-7 cm long, 0.4-1.0 cm wide. *Inflorescence* emerging from nodes opposite to leaf lamina, 2.7-6.8 cm long, peduncle slender, terete, with 3-5 brown sheathing bracts, 2-4 cm long; rachis subdensely 12-14 flowered, 1.5-3.2 cm long; floral bracts broadly triangular, acute, 0.8 mm long. *Flowers* with pale green to green sepals and petals, lip with green midlobe and edges of spur mouth, rest of spur white to pale green, column pale green to green, anther cap purple-red; dorsal sepal oblong to oblong-elliptic, obtuse to shortly truncate, 3.9 mm long, 2.1 mm wide; lateral sepals obliquely oblong, subacute, 3.8 mm long, 1.8 mm wide; petals oblong to oblong-elliptic, subacute to shortly truncate, 3.8 mm long, 1.7 mm wide; labellum infundibuliform, apex subacute to obtuse, 9.8 mm long; mouth of labellum oblique, 3.8 mm wide from base of column to midlobe; midlobe fleshy, deltate, c. 0.7 mm long; column semicylindriclavate, 2.1 mm long.

Distribution: Sri Lanka.

Specimens Examined: SRI LANKA, Rangala, Corbet's Gap, 1290 m, 18 March 1959, D.M.A. Jayaweera 32 (AMES); *sine loc.*, G.H.K. Thwaites, C.P. 488 (BM, K-L, PDA); *sine loc.* & *coll. s.n.* (AMES).

Habitat: On trees of submontane forests.

Note: Lindley mentioned Gardner's manuscript name *Saccolabium virescens* in the synonymy of *S. brevifolium* Lindl. Jayaweera (1981) provided an English description and a figure of the former entity which he transferred to *Robiquetia*. However, the

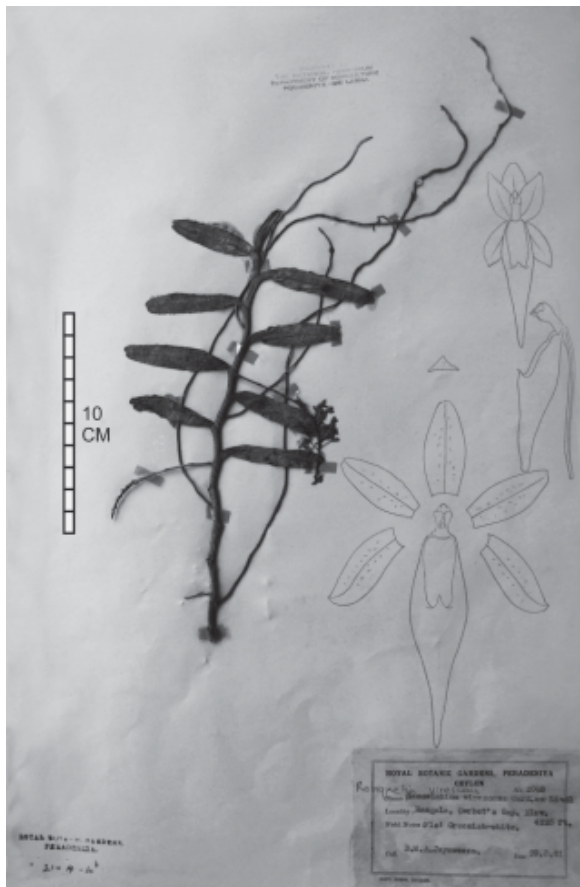


Figure 12. *Robiquetia virescens* Ormerod & Fernando (type specimen at PDA).

name *Saccolabium virescens* was never validly published and consequently the name *Robiquetia virescens* is until now invalid. We, therefore, have validated the name *R. virescens* for this checklist.

Robiquetia virescens is related to *R. brevifolia* (Lindl.) Garay but differs from it by having longer (4-7 vs. 1.5-2.0 cm) leaves, flowers with pale green to green (not deep purple red) sepals and petals, oblong to elliptic (not obliquely late obovate) petals and much broader entrance to the lip.

Jayaweera (1981) mentions that there is a white-

flowered form of *R. virescens*. His observation was based on *Bernardi 15769* (PDA) which has shorter and more coriaceous leaves than *R. virescens*. We are unsure of the identity of this collection and thus have excluded it from this list.

Satyrium Swartz

Kongl. Vetensk. Acad. Nya Handl. 21: 214. 1800.
nom. cons.

Satyrium nepalense D. Don, Prodr. Fl. Nepal. 26. 1825.

Distribution: Montane zone.

Schoenorchis Reinw. ex Blume

Bijdr. 361. 1825.

Schoenorchis nivea (Lindl.) Schltr., Repert. Spec. Nov. Regni Veg., Beih. 1: 986. 1913. *Saccolabium niveum* Lindl., Gen. Sp. Orch. Pl. 224. 1833.

Distribution: Lowland wet and submontane zones.

Note: Gopalan and Henry (1989) have recorded this species from India.

* **Schoenorchis tortifolia** (Jayaweera) Garay, Bot. Mus. Leafl. Harv. Univ. 23: 203. 1972. *Saccolabium tortifolium* Jayaweera, Bot. Mus. Leafl. Harv. Univ. 20: 111. 1963.

Distribution: Submontane zone.

Seidenfadeniella Sath. Kumar

in C. S. Kumar & K. S. Manilal, Cat. Ind. Orchids, 43. 1994.

Seidenfadeniella filiformis (Rchb. f.) E. A. Christenson & Ormerod in Matthew, Fl. Palni Hills 1258. 1999. *Saccolabium filiforme* Rchb. f., Walp. Ann. 6: 887. 1864. *Schoenorchis juncifolia* auct. non Blume: Thwaites, Enum. Pl. Zeyl. 304. 1864. *Saccolabium chrysanthum* Alston in Trimen, Handb. Fl. Ceylon (Suppl.) 6: 277. 1931. *Schoenorchis chrysantha* (Alston) Garay, Bot. Mus. Leafl. Harv. Univ. 23: 202. 1972. *Seidenfadeniella chrysantha* (Alston) Sathish Kumar & Manilal, Cat. Ind. Orch. 47. 1994.

Distribution: Montane zone.

Note: Sathish Kumar (Sathish Kumar & Manilal, 1994) erected this genus with two species distributed in India and Sri Lanka. Later, the name of *S. chrysantha* (Alston) Sath. Kumar was changed using an earlier available basionym to *Saccolabium filiforme* Rchb. f. 1864 by Christenson & Ormerod (Seidenfaden in Matthew, 1256: 1999).

Sirhookera Kuntze

Revis. Gen. Pl. 2: 681. 1891.

Sirhookera lanceolata (Wight) Kuntze, Revis. Gen. Pl. 2: 681. 1891. *Josephia lanceolata* Wight, Ic. Pl. Ind. Or. 5(1): 19. t. 1742. 1851.

Distribution: Lowland wet, submontane and montane zones.

Sirhookera latifolia (Wight) Kuntze, Revis. Gen. Pl. 2: 681. 1891. *Josephia latifolia* Wight, Ic. Pl. Ind. Or. 5(1): 19. t. 743. 1851.

Distribution: Submontane and montane zones.

Spathoglottis Blume

Bijdr. 400. 1825.

Spathoglottis plicata Blume, Bijdr. 401. 1825.

Distribution: Lowland wet and submontane zones.

Note: This adventive species is now recorded from many areas in wet and mid elevation zone in Sri Lanka, especially near waterways. This is a common garden plant in most parts of Sri Lanka.

Spiranthes Rich.

De Orchid. Eur. 28. 1817.

Spiranthes sinensis (Pers.) Ames, Orchidaceae 2: 53. 1908. *Neottia sinensis* Pers., Syn. Pl. 2: 511. 1807.

Distribution: Lowland wet and submontane zone.

Stichorkis Thouars

Nouv. Bull. Sci. Soc. Philom. Paris 1: 318. 1809.

Stichorkis disticha (Thouars) Pfitzer in H. G. A. Engler & K. A. E. Prantl (eds.), Nat. Pflanzenfam., Nachtr. 1: 103. 1897. *Liparis disticha* Lindl., Bot. Reg. 11: sub t. 882. 1826.

Distribution: Montane and submontane zones.

Note: *Liparis gibbosa* Finet is now placed under this genus (Pridgeon *et al.*, 2005). This species has been identified as *Liparis disticha* Lindl. and *L. gibbosa* Finet. The identity of the Sri Lankan material is not wholly certain, so we have taken a conservative approach and used the oldest available name.

Tainia Blume

Bijdr. 354. 1825.

Tainia bicornis (Lindl.) Rchb. f., Bonplandia 5: 54. 1857. *Ania bicornis* Lindl., Bot. Reg. 28: Misc. 37. 1842.

Distribution: Submontane zone.

Taeniophyllum Blume

Bijdr. 355. 1825.

Taeniophyllum alwisii Lindl., J. Proc. Linn. Soc., Bot. 3: 42. 1858.

Distribution: Submontane and montane zones.

* **Taeniophyllum gilimalense** Jayaweera, Bot. Mus. Leafl. Harv. Uni. 20: 144. 1963.

Distribution: Lowland wet zone.

Taprobanea Christenson

Lindleyana 7: 90. 1992.

Taprobanea spathulata (L.) Christenson, Lindleyana 7 (2): 91. 1992. *Epidendrum spathulatum* L., Sp. Pl. 952. 1753. *Vanda spathulata* (L.) Spreng., Syst. Veg. 3: 719. 1828.

Distribution: Intermediate and dry zones.

Thrixspermum Loureiro

Fl. Cochinch. 519. 1790.

***Thrixspermum pugionifolium** (Hook. f.) Schlechter, Orchis 5: 57. 1911. *Sarcochilus pugionifolius* Hook. f., Fl. Brit. India. 6: 196. 1890.

Distribution: Intermediate and dry zones.

Thrixspermum pulchellum (Thwaites) Schlechter, Orchis 5: 57. 1911. *Dendrocolla pulchella* Thwaites, Enum. Pl. Zeyl. 430. 1864. *Sarcochilus pulchellus* (Thwaites) Trimen, J. Ceyl. Br. Roy. As. Soc. 9: 89. 1885.

Distribution: Lowland wet zone.

Note: This species was recorded by Manilal and Sathish (1986) from Palode, Trivandrum district in India (CU36969, CALI and Sathish Kumar 501, TBGT). It is a member of the difficult *T. hystrix* (Blume) Rchb. f. complex.

Thrixspermum walkeri Seidenf. & Ormerod in G. Seidenfaden, Descr. Epidendrorum J. G. König 1791: 26. 1995. *Thrixspermum complanatum* auct. non (J. G. König) Schltr.: Alston in Trimen, Supple. Handb. Fl. Ceyl. 277. 1931; Jayaweera, Rev. Handb. Fl. Ceylon 2: 195. 1981. *Sarcochilus complanatus* auct. non (J. G. König) Hook. f.: Hook. f., Fl. Brit. India 6: 41. 1890, *p.p.*

Distribution: Lowland wet zone.

Note: The Sri Lankan species was incorrectly identified as *T. complanatum* (J. G. König) Schlechter based on *Epidendrum complanatum* Koen. 1791 from Thailand.

Trichoglottis Blume

Bijdr. 359. 1825.

Trichoglottis tenera (Lindley) Rchb. f., Gard. Chron. 1872: 699. 1872. *Oeceoclades tenera* Lindl., Gen. Sp. Orch. Pl. 236. 1833. *Cleisostoma tenerum* (Lindl.) Hook. f., Fl. Brit. India 6: 73. 1890

Distribution: Submontane and montane zones.

Tropidia Lindley

Edward's Bot. Reg. 19: t. 1618. 1833.

***Tropidia bambusifolia** (Thwaites) Trimen, SJ. Ceyl. Br. Roy. As. Soc. 9: 90. 1885. *Cnemidia bambusifolia* Thwaites, Enum. Pl. Zeyl. 313. 1861.

Distribution: Lowland wet zone.

Note: *T. bambusifolia* (Thwaites) Trimen is an endemic plant synonymised under *T. thwaitesii* Hook. f. in World Checklist of Monocots (2007). No flowering material has been deposited in Kew (Pers. comm., J. J. Wood). When flowering and morphological characters of the two taxa are compared, they can be distinguished clearly as separate species.

Tropidia thwaitesii Hook. f., Fl. Brit. India 6: 93. 1890.

Distribution: Lowland wet to dry zone.

Note: This species has been recorded from India (Rao, 1989).

Vanda Jones ex R. Br.

Bot. Reg. 6: t. 506. 1820.

Vanda tessellata (Roxb.) Hook. ex G. Don in J. C. Loudon, Hort. Brit.: 372. 1832. *Epidendrum tessellatum* Roxb., Pl. Corom. 1: 34. T. 42. 1795. *Vanda roxburghii* R. Br., Bot. Reg. 6: t. 506. 1820. **Fig. 13**

Distribution: Intermediate and dry zones.

English: Anuradhapura orchid, grey orchid

Sinhala: Rassana, Retta

Vanda testacea (Lindl.) Rchb. f., Gard. Chron., n. s., 8: 166. 1877. *Aerides testacea* Lindl., Gen. Sp. Orch. Pl. 238. 1833. *Vanda parviflora* Lindl., Edward's Bot. Reg. 30: Misc. 57. 1844.

Distribution: Lowland wet, intermediate and dry zones.

Vanda thwaitesii Hook. f. in H. Trimen, Handb. Fl. Ceylon 4: 193. 1898.

Distribution: Lowland intermediate zone.

Note: This species was recently recorded in India (C. S. Kumar and P. C. S. Kumar, 1998). It was originally



Figure 13. Selected colour varieties of *Vanda tessellata* (Roxb.) Hook. ex G. Don (all photographs by S. Gunasekhara).

described by J.D. Hooker (1898) from Sri Lanka using two paintings at PDA and Thwaites' description (1864) but the original specimen (*C.P. 3378*) is believed to be lost. It was originally recorded from Hunnasgiriya area in Central Province. Since it is not found from Sri Lanka it is believed to be extinct in the Island (Jayaweera, 1981).

The appearance of this species can easily be confused with the widespread *V. tessellata* (Roxb.) Hook. ex G. Don which has a wide range of flower colorations and shapes. Yet, since the type locality has a considerable amount of forest cover and habitat for Vandaceous plants, we decided not to omit it from the list.

Vanda wightii Rchb. f., Ann. Bot. Syst. 6: 932. 1864.

Distribution: Not known

Note: This species was rediscovered after 150 years from Karnataka and Kerala, India (Sathish Kumar *et al.* 2007). There is one specimen from Reichenbach herbarium, *Thwaites C.P. 2346* at W collected from Sri Lanka.

This species can easily be confused with the widespread *V. tessellata* (Roxb.) Hook. ex G. Don.

Vanilla Plum. ex Miller
Gard. Dict. Abr. ed. 4. 1754.

Vanilla planifolia Jacks. ex Andrews, Bot. Repos. 8: t. 538. 1808.

Distribution: Cultivated in lowland wet zone.

* **Vanilla moonii** Thwaites, Enum. Pl. Zeyl. 312. 1861.

Distribution: Lowland wet zone.

Vanilla walkeriae Wight, Icon. Pl. Ind. Orient. 3(2): 12. t. 932. 1844-45.

Distribution: Intermediate and dry zones.

Zeuxine Lindley
Coll. Bot., App.: 1. 1826.

Zeuxine blatteri C. E. C. Fischer, Bull. Misc. Inf. Kew:76. 1928. *Z. flava* auct. non (Wall. ex Lindl.) Trimen Jayaweera, Rev. Handb. Fl. Ceylon 2: 323. 1981.

Distribution: Submontane zone.

Zeuxine longilabris (Lindl.) Trimen, Syst. J. Ceyl. Br. Roy. As. Soc. 9: 90. 1885. *Monochilus longilabre* Lindl., Gen. Sp. Orch. 487. 1840.

Distribution: Submontane zone.

* **Zeuxine regia** (Lindl.) Trimen, J. Ceyl. Br. Roy. As.

Soc. 9: 90. 1885. *Monochilus regium* Lindl., Gen. Sp. Orch. 487. 1840.

Distribution: Submontane zone.

Sinhala: Iru raja

* **Zeuxine reginasilvae** Ormerod, Taiwania 50 (1): 7. 2005. *Z. regia* non (Lindl.) Trimen: Jayaweera, Rev. Handb. Fl. Ceylon 2:320. 1981. **Fig. 11f**

Distribution: Lowland wet zone.

Zeuxine strateumatica (L.) Schltr., Bot. Jahrb. Syst. 45: 394. 1911. *Orchis strateumatica* L., Sp. Pl. 943. 1753. *Pterygodium sulcatum* Roxb., Fl. Ind. 3: 45. 1832. *Zeuxine sulcata* (Roxb.) Lindl., Gen. Sp. Orch. Pl. 485. 1840.

Distribution: Lowland wet, submontane and eastern intermediate zone.

Acknowledgements

We like to extend our thanks to the following people, the curator and staff of the Herbaria at AMES, BM, K and PDA for permitting specimen reference; Prof. M. D. Dassanayake, general editor of Flora of Ceylon revision project and Dr D.S.A. Wijesundara, Director, General National Botanic Gardens, Sri Lanka who gave invaluable information for the work; R. Govaerts, world checklist programme and Jeffrey Wood, curator, orchid herbarium at Kew, Dr M. K. Huda at Chittagong University, Bangladesh and Dr R. Ganesan, ATREE, India, who provided necessary literature support; Prof. Mark Chase and Dr Micheal Fay at Jodrel laboratory, Kew, who gave us current classification details and the Swiss Orchid Foundation for important data provided; Dr C. Sathish Kumar of TBGRI, India, who enriched the contents of this contribution and continuously encouraged us. Finally, we are grateful to the following people for providing their excellent orchid photographs (names in alphabetical order): Messrs Imaduwa Priyadarshana, Kitsiri Gunawardhana, Palitha Anthony, Preedep Samarawikrama and Samantha Gunasekara. All other photographs are by the first author.

Literature Cited

- Abeywickrama, B. A. 1959.** A provisional Check List of the Flowering Plants of Ceylon. *Ceylon J. Sci. (Bio. Sci)* 2: 146-152.
- Abraham, A. & P. Vatsala 1981.** *An Introduction to Orchids.* Tropical Botanic Garden and Reserch Institute Trivandrum, India.

- Ackerman, J. D. 2000.** Notes on the Caribbean Orchid Flora II. *Lindleyana* 15: 89-95.
- Alston, A. H. G. 1931.** *A Handbook to the Flora of Ceylon* 6: 271-280, *Supplement*. Dulau & Co. London.
- Ansari, R. & R. Balakrishnan 1990.** A Revision of the Indian Species of *Oberonia* (Orchidaceae). *Orchid Monographs* 4: 1-89.
- Berg, van den C., D. H. Goldman, J. V. Freudenstein, A. M. Pridgeon, K. M. Cameron & W. C. Mark 2005.** An overview of the phylogenetic relationships within Epidendroideae inferred from multiple DNA regions and recircumscription of Epidendreae and Arethuseae (Orchidaceae). *Amer. J. Bot.* 92: 613-624.
- Bhat, K.G. 2000.** *Robiquetia rosea* (Lindl.) Garay: A new record for India. *Rheedea* 10 (2): 135-137.
- Chase, M.W., R.L. Barrett, K.M. Cameron & J.V. Freudenstein 2003.** DNA Data and Orchidaceae Systematics: A New Phylogenetic Classification. In Dixon, K.W. (Ed.) *Orchid Conservation*. Natural History Publications, Kota Kinabalu, Sabah. Pp. 69-89.
- Christenson, E. A. 2002.** *Phalaenopsis. A monograph*. Timber Press, Portland, Oregon.
- Christenson, E. A. 2006.** Notes on *Phalaenopsis*. *Austral. Orch. Rev.* 71: 34-35.
- Christenson, E & H. Wood 2003.** The Mystery of *Limodorum aphyllum*. *Orchids* 72: 774-777.
- Clayton, D. 2002.** *The genus Coelogyne. A synopsis*. Natural History Publ. (Borneo) & Royal Botanic Gardens, Kew.
- Comber, J. B. 1990.** *Orchids of Java*. Royal Botanic Gardens, Kew.
- Comber, J. B. 2001.** *Orchids of Sumatra*. Natural History Publications, Kota Kinabalu, Sabah.
- Cribb, P. & P. Ormerod 1999.** Notes on Orchidaceae from the Pacific Islands. *Kew Bull.* 55: 231-236.
- Cribb, P. Sun, M. & G. Barretto 2004.** *Phaius tankervilleae* and *P. wallichii* (Orchidaceae), a pair of confused species. *Kew Bull.* 59: 547-554.
- Dressler, R. L. 1993.** *Phylogeny and Classification of the Orchid Family*. Cambridge University Press, UK.
- Eakanayake, D.T. 1975.** Some wild orchid species of Sri Lanka (Ceylon). *Proceedings of Eighth World Orchid Conference*. Pp. 205-210.
- Fernando, M., Wijesundara, S. & S. Fernando 2003.** *Orchids of Sri Lanka A Conservationist's Companion: A Simplified guide to identification*. Vol.1. The protected orchids and selected similar species. IUCN, Sri Lanka.
- Fernando, S. S. & S. Gunasekara 2005.** *Habenaria roxburghii* R. Br. - A new addition to the Sri Lankan Orchid Flora. *J.Natn. Sci. Foundation Sri Lanka* 33: 273-275.
- Garay, L. A. & G. A. Romero-Gonzalez 1999.** *Schedulace Orchidum* II. *Harvard Papers in Botany* 4: 475-488.
- Gopalan, R. & A. N. Henry 1988.** A New subspecies of *Dendrobium diodon* Reichb.f. (Orchidaceae) From Southern India. *J.Econ.Tax. Bot.* 12: 487-488.
- Gopalan, R. & A. N. Henry 1989.** *Schoenorchis nivea* (Lindl.) Schltr. (Orchidaceae) - A New record for India. *J. Econ.Tax. Bot.* 13: 258.
- Gopalan, R. & A. N. Henry 1990.** A New subspecies of *Dendrobium panduratum* Lindl. (Orchidaceae) From Southern India. *J.Bombay Nat. Hist. Soc.* 87: 128-129.
- Hooker, J. D. 1888-1890.** Orchidaceae. In: the *Flora of British India* 5: 667-858 & 6: 1-198. Ashford, Kent.
- Hooker, J. D. 1898.** In: Trimen H. *Handbook to the Flora of Ceylon*. Bishen Singh and Mahendra Pal Singh, India (Reprinted 1974) 4: 132-237.
- Hooker, J. D. 1893.** *Icones Plantarum* 22: t. 2174.
- Hunt, P. F. & V. S. Summerhayes, 1966.** Notes on Asiatic Orchids: IV. *Kew Bull.* 20(1):51-61.
- Jayaweera, D. M. A. 1963.** New Orchids from Ceylon. *Bot. Mus. Leaf. Harv. Uni.* (20) 4: 93-116.
- Jayaweera, D. M. A. 1981.** Apostasiaceae and Orchidaceae. In: Dassanayake M.D. & Fosberg, F.R. *A Revised handbook to the flora of Ceylon*. 2:1-320.
- Joseph, J. 1987.** *Orchids of Nilgiris*. Botanical Survey of India, Calcutta, 1-186.
- Khan, M. S. & M. Halam 1989.** *Gastrodia zeylanica* Schlechter (Orchidaceae) A new angiospermic record for Bangladesh. *Bangladesh J. Bot.* 18: 113-115.
- Kruizinga, H. J., Scheindelen Van & E.F. De Vogel 1997.** Revision of the Genus *Bromheadia* (Orchidaceae). *Orchid Monographs* 8: 79-118. Figures 29-55+plates 4b-5b.
- Kurzweil, H. 2005.** Taxonomic studies in the genus *Disperis* (Orchidaceae) in southeast Asia. *Blumea* 50: 143-152.
- Lavarack, B., Harris, W. & G. Stocker 2000.** *Dendrobium and its relatives*. Kangaroo Press.
- Lindley, J. 1830-1840.** *Genera and Species of Orchidaceous Plants*. Ridgways, London.
- Lindley, J. 1858.** Contributions to the Orchidology of India II *J. Linn. Soc. Bot.* 3:1-63.
- Manilal, K. S. & C. Sathish Kumar 1984.** *Oberonia thwaitesii* Hk.f., An addition to orchid flora of India. *Curr. Sci.* 53: 1106-1107.
- Manilal K. S. & C. Sathish Kumar 1985.** *Dendrobium panduratum* Lindl. (Orchidaceae) A new record for India. *J. Indian Bot. Soc.* 64: 299-301.
- Manilal, K. S. & C. Sathish Kumar 1986.** *Thrixsperrum pulchellum* (Thw.) Schltr. (Orchidaceae)- A New Record for India. *Indian J. Bot.* 9: 11-13.
- Margonska, H. B. & D. L. Szlachetko 2001.** Materials to a revision of the genus *Seidenfia* (Orchidaceae, Malaxidinae) with a description of a new species. *Polish Botanical Journal* 46: 47-62.
- Misra, S. 2004.** *Didymoplexis pallens* Griff., An Uncommon Saprophytic Orchid from Orissa, India. In: Manilal K. S. & C. S. Kumar (Eds) *Orchid Memories- A Tribute*

- to Gunnar Seidenfaden. Mentor books and Indian Association for Angiosperm Taxonomy (IAAT). pp. 73-80.
- Moon, A. 1824.** *Catalogue of Indigenous and Exotic plants growing in Ceylon*. Vaslian Mishanry Press Colombo.
- Muktesh Kumar, M. S., Sequiera, S. & P.V. Anto 2000.** *Bulbophyllum maskeliyense* Livera (Orchidaceae) - A new record for India. *J. Econ. Taxon. Bot.* **24**: 207-209.
- Ormerod, P. 2002.** Taxonomic changes in Goodyerinae (Orchidaceae: Orchidoideae) *Lindleyana* **17**: 189-238.
- Ormerod, P. 2004.** Notulae Goodyerinae *Oasis suppl.* **3**: 3-19.
- Ormerod, P. 2005a.** Notes on Papuasian orchids. *Orchadian* **14**: 563 - 565.
- Ormerod, P. 2005b.** Notulae Goodyerinae (II) *Taiwania* **50**: 1-10.
- Ormerod, P. 2005c.** Some notes on *Phreatia* Lindl. (Orchidaceae) *Taiwania* **50**: 183-190.
- Pedersen, H. A. 1993.** The genus *Pteroceras* (Orchidaceae) - a taxonomic revision. *Opera Botanica* **117**: 1- 64.
- Pridgeon, A. M., Cribb, P. J., Chase, M. W. & F. N. Rasmussen 2005.** *Genera Orchidacearum 4 Epidendroideae (Part one)*. Oxford University Press, Oxford.
- Rao, A. N. 1989** *Tropidia thwaitesii* Hook. f. (Orchidaceae) A new record to India. *J. Indian Bot. Soc.* **68**: 409-410.
- Sathish Kumar, C. & K. S. Manilal 1994.** *A Catalogue of Indian Orchids*. Mentor Books & IAAT, Calicut.
- Sathish Kumar, C. & K. S. Manilal 2004.** Orchids of Kerala, India. In: Manilal K. S. & C. S. Kumar (Eds) *Orchid Memories-A Tribute to Gunnar Seidenfaden*. Mentor books and Indian Association for Angiosperm Taxonomy (IAAT).
- Sathish Kumar C. & P. C. Suresh Kumar 1998.** The reappearance of *Vanda thwaitesii* J.D. Hook. (Orchidaceae) *Rheedea* **8**: 249 - 253.
- Sathish Kumar C., Suresh Kumar, P. C. & E. George 2006.** Rediscovery of Robert Wight's *Vanda wightii* Rchb. f. (Orchidaceae) *Rheedea* **16**: 49-54.
- Seidenfaden G. 1968.** The Genus *Oberonia* in Mainland Asia. *Dansk Botanisk Arkiv.* **25**: 1- 125.
- Seidenfaden G. 1974.** Notes on *Cirrhopetalum* Lindl. *Dansk Botanisk Arkiv.* **29**: 1- 260.
- Seidenfaden, G. 1977.** Orchid Genera in Thailand V. *Dansk Bot. Ark.* **31**(1): 1-149.
- Seidenfaden, G. 1982.** Orchid genera in Thailand X. *Trichotosia* Bl. and *Eria* Lindl. *Opera Botanica* **62**: 1-157.
- Seidenfaden, G. & J. J. Wood 1992.** *The orchids of Peninsular Malaysia and Singapore*. Olsen & Olsen, Fredensborg, Denmark.
- Seidenfaden, G. 1995a.** *The Descriptiones Epidendrorum of J.G. König 1791*. Olsen & Olsen, Fredensborg, Denmark.
- Seidenfaden, G. 1995b.** Contribution to the orchid flora of Thailand XII. *Opera Botanica* **124**: 64 -65.
- Seidenfaden, G. 1999.** Orchidaceae. In: Matthew, K.M. (Eds) *The Flora of the Palni hills*. 1197-1272. Rapinat Herbarium, Tiruchirapalli.
- Senaratna, L. K. 2001.** *A Checklist of the Flowering Plants of Sri Lanka*. Nat. Sci. Foundation Sri Lanka, 244-257.
- SOF, 2007.** The Database of Swiss Orchid Foundation. Published on the internet at <http://orchid.unibas.ch/site.sof.php> [accessed on 21 August 2007; 17.25 GMT].
- Srinivasan, S. R. & V. Chitra 1989.** *Bulbophyllum macraei* (Lindl.) Reichb. f. - a new record for the flora of India from Tamil Nadu. *J. Econ. Tax. Bot.* **13**: 43-44.
- The International Plant Name Index 2003.** Published on Internet. <http://www.ipni.org> [access 08 March 2007].
- Thwaites, G. H. K. 1864.** *Enumeratio Plantarum Zeylaniae*. Dulau & Co., London.
- Trimen, H. 1885.** Systematic catalogue of the flowering plants and Ferns Indigenous or growing wild in Ceylon. *Journ. of the Ceylon Branch Royal Asiatic Soc.* **9**: 1-137.
- Trimen, H. 1898.** *A Handbook to the flora of Ceylon* **4**: 132-239. Dulau & Co. London.
- Watthana, S. 2006.** The *Pomatocalpa maculosum* complex (Orchidaceae) revised by multivariate morphometric analysis. *Taiwania* **51**: 1-10.
- Watthana, S. 2007.** The genus *Pomatocalpa* (Orchidaceae) - A taxonomic monograph. *Harvard Papers of Botany* **11**: 207-256.
- Wight, R. 1844-1853.** *Icones plantarum Indiae Orientalis* Madras.
- Willis, J. C. 1911.** *Revised catalogue of the Indigenous flowering plants and Ferns of Ceylon*. Government Press, Ceylon.
- World Checklist of Monocots 2004-2006.** The Board of trustees of the Royal Botanic Gardens, Kew. Published on the Internet; <http://www.kew.org/monocotChecklist/> [accessed 08 March 2007; 18. 00 GMT].

Received : 29.2.2008

Revised and accepted : 15.4.2008