

Aquatic Weeds in EAA Canals



Lyn Gettys, PhD
University of Florida IFAS FLREC
lgettys@ufl.edu



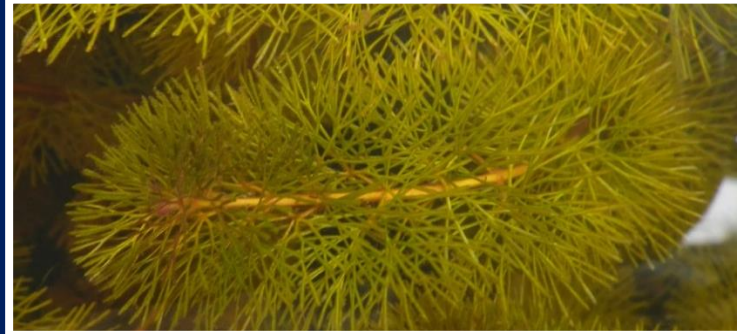
Florida's environment



Common EAA aquatic weeds



Water lettuce
Pistia stratiotes
Photo by Alison Fox, 1998



Torpedograss
Panicum repens
Photo by Ann Murray
© 2003 University of Florida



Waterhyacinth

Eichhornia crassipes (Pontederiaceae)

Brazil, S. America

FL Prohibited Aquatic Plant

Plant height to 3'

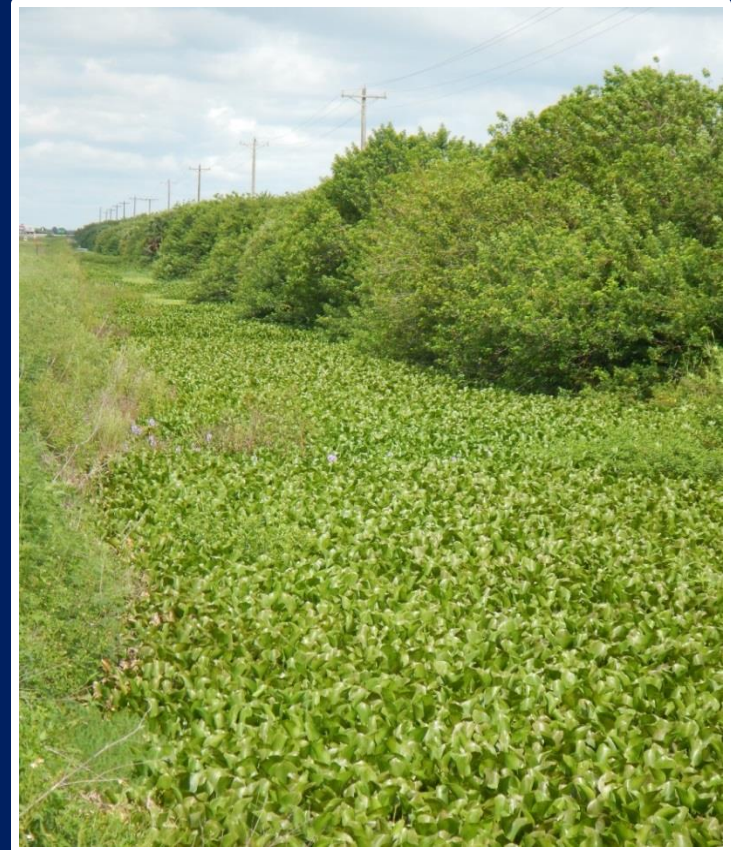
Leaves 5", round

Leathery/rubbery

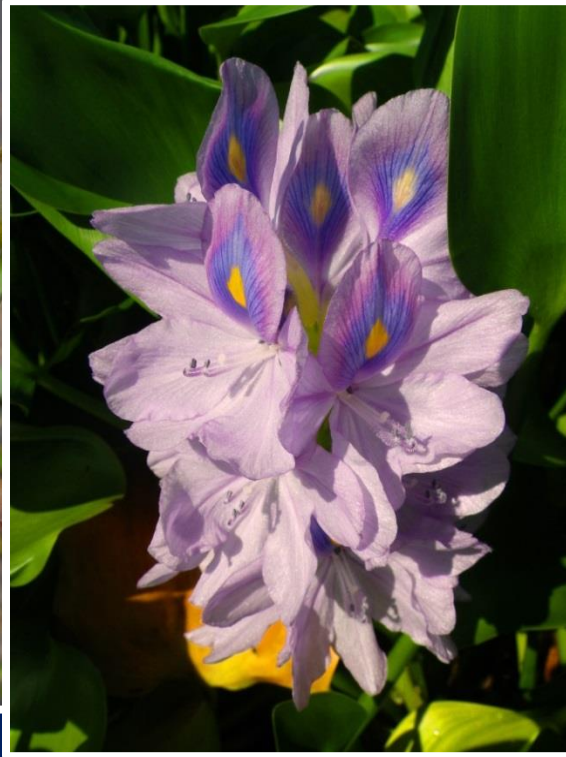
Spongy petioles; basal

Roots dark, feathery

Showy purple flowers



Waterhyacinth



Waterhyacinth



Neochetina eichhorniae
Mottled water hyacinth weevil
Copyright 1997 USDA-ARS

**2,4-D, triclopyr
Diquat, glyphosate
Penoxsulam**

Waterlettuce

Pistia stratiotes (Araceae)

S. America, Africa, SE US???

FL Class 2 Prohibited Aquatic Plant

Plant width to 2'

Leaves to 1', scalloped

Thick, dull green, sessile

Roots light, feathery

Inconspicuous flowers



Waterlettuce



**2,4-D, diquat, endothall
Flumioxazin**

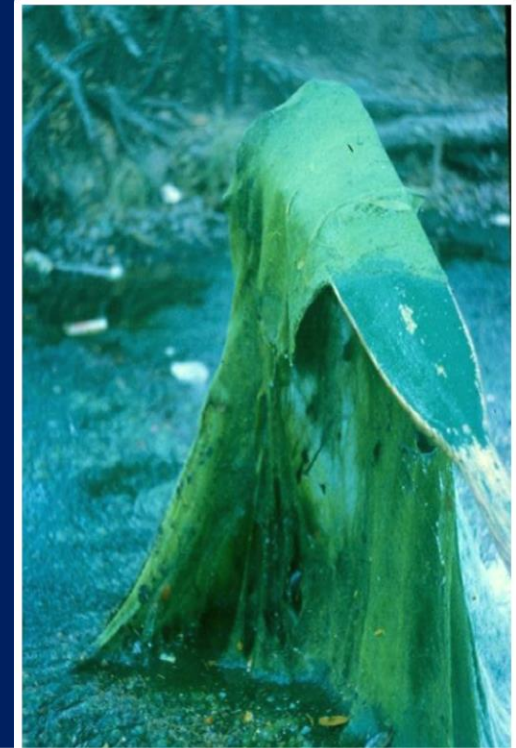
Algae

Many types, many species...

- Planktonic
- Macrophytic
- Filamentous



Algae



Copper, flumioxazin
Nutrient binders (alum, PhosLock)

Torpedograss

Panicum repens (Poaceae)

Africa, Asia

FLEPPC Cat 1

Plant height to 3'

Leaves to 1/4" x 10"

Blue-green

Clasping hairy ligule

Open panicle to 9"

Small yellow flowers

Sharp pointed rhizome



Torpedograss



Glyphosate
Fluridone, imazapyr

Alligatorweed

Alternanthera philoxeroides (Amaranthaceae)

S. America

FL Prohibited Aquatic Plant

Plant height to 1'

Leaves simple, to 4"

Elliptic to lanceolate

Smooth margins

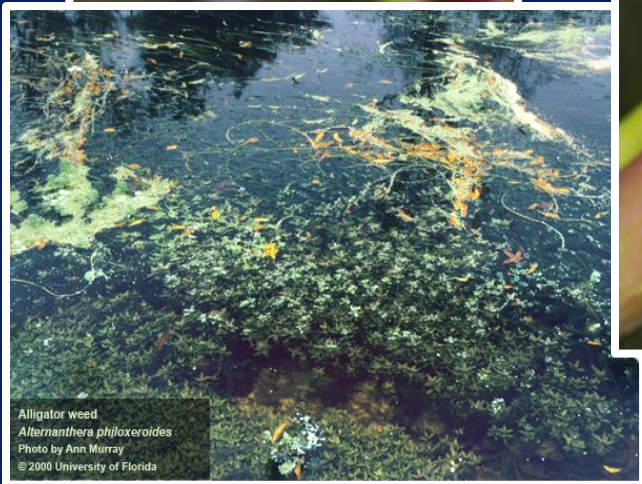
Opposite

Hollow stems

White flower on peduncle



Alligatorweed



Alligator weed
Alternanthera philoxeroides
Photo by Ann Murray
© 2000 University of Florida

Imazapyr, imazamox
Glyphosate, triclopyr

Fanwort

Cabomba caroliniana (Cabombaceae): native***

Plant height to 30'

Submersed leaves finely cut, fan-like, 3"

Gelatinous

Opposite or verticillate/whorled

Emergent leaves ◇

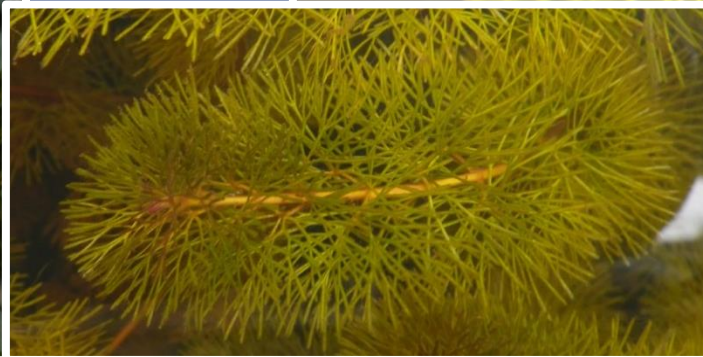
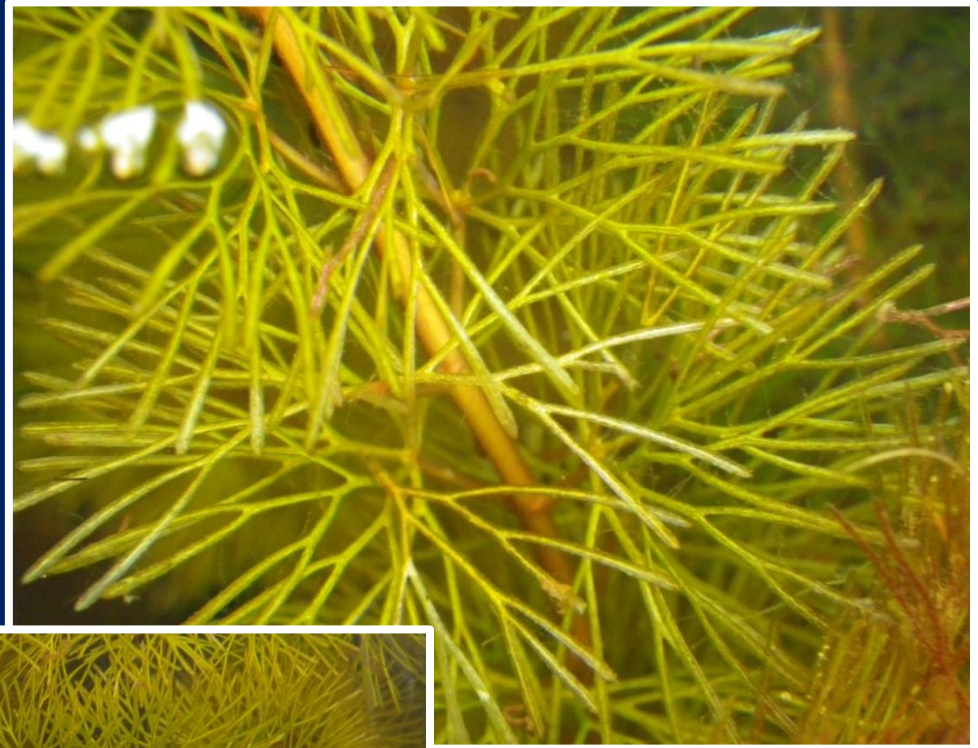
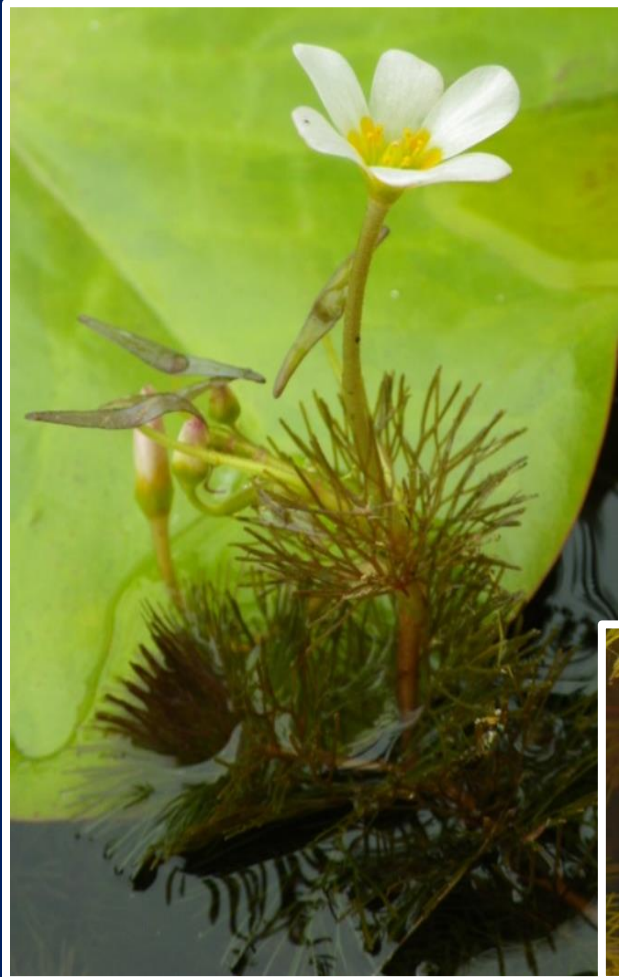
Usually rooted

Free-floating or anchored

Flowers emergent, 0.5"



Fanwort



Flumioxazin

Crested floatingheart

Nymphoides cristata (Menyanthaceae)

Asia

FL Noxious Weed

Leaves 6", cordate

Dark red markings

Smooth

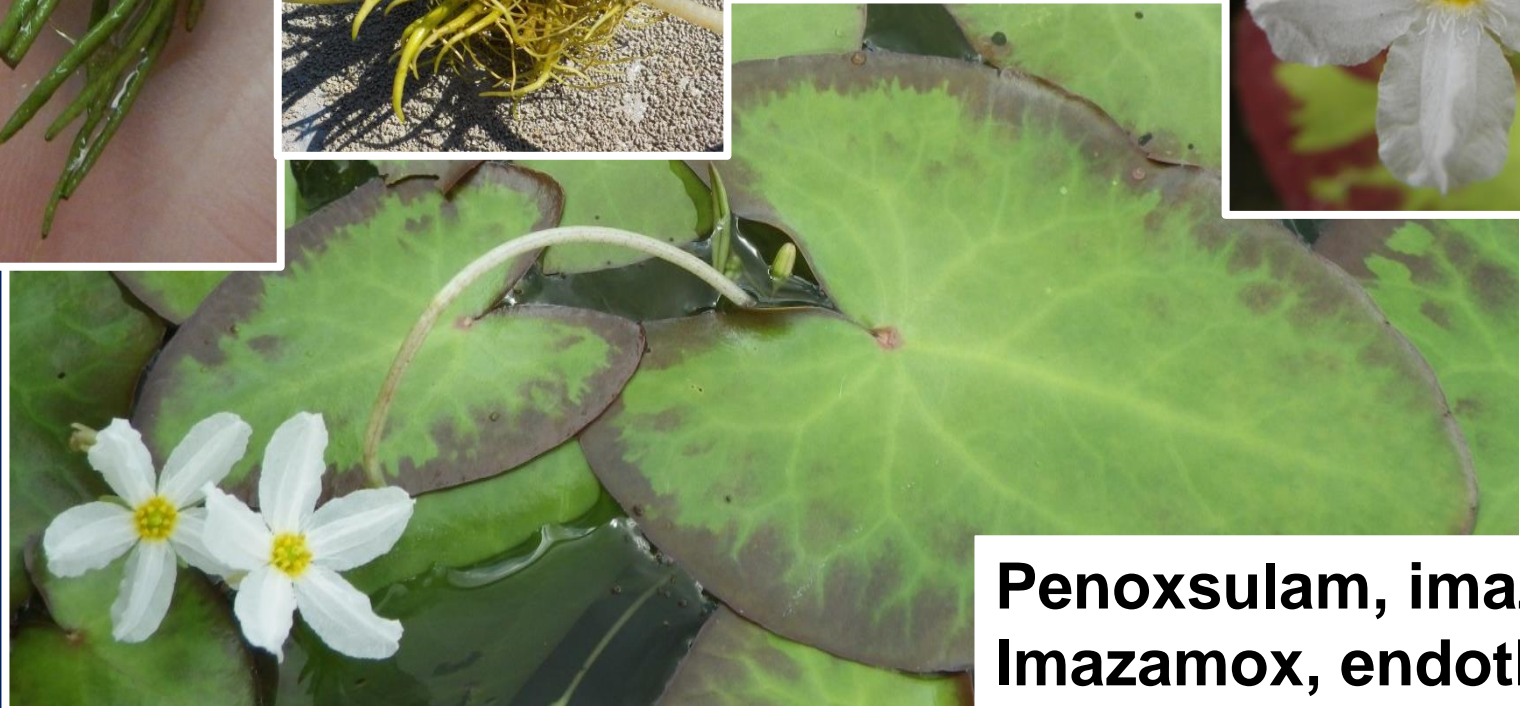
Ridged white flowers

~5 petals

Spikey ramet



Crested floatingheart



**Penoxsulam, imazapyr
Imazamox, endothall**

Thank you!

AWCSC: May 7-10, Coral Springs



Conference.ifas.ufl.edu/aw

Lyn Gettys, Ph.D. • lgettys@ufl.edu • Go GATORS!!!