

Additional biographical notes on plant collectors in southern Africa

L. E. CODD* and MARY GUNN*

Keywords: biographies, plant collectors, southern Africa

ABSTRACT

Biographical notes on plant collectors, supplementary to those already published in *Botanical Exploration of Southern Africa* by Mary Gunn & L. E. Codd (1981), and including some collectors not previously recorded, are provided.

INTRODUCTION

In our publication *Botanical Exploration of Southern Africa* (Gunn & Codd, 1981) many collectors' names are listed with little or no biographical information. Attempts have since been made to collect some of the missing data and have, in several cases, met with success. The information gathered is now presented and the opportunity is taken to make some corrections to the original text. In addition, several new names, not previously recorded, are added. It is also apparent that some names, taken over from lists published by Tölken (1971) and in the Index Herbariorum series on collectors, are scarcely important enough to warrant inclusion.

We especially wish to thank those readers of *Veld & Flora* who came forward with information in response to a plea which we published in that journal. No doubt many collectors have still been overlooked, especially modern ones, in spite of appeals to those whose names were omitted to submit the necessary documentation. We again appeal to all readers to inform us of any omissions or errors that are known to them.

ALPHABETICAL LIST OF COLLECTORS

* An asterisk indicates that the name appeared in Gunn & Codd (1981).

Abbott, Anthony Thomas Dixon (1936-)

b. Great Britain, 22 Sept. 1936; farmer; ed. Rugby School 1950-54 and Northampton Institute of Agriculture 1955-56. Came to South Africa in 1956 and farmed near Port Edward. Encouraged by Mr H. B. Nicholson and Mr A. E. van Wyk, he is compiling a comprehensive check list of the Umtamvuna flora, with special reference to the high degree of endemism found on Table Mountain Sandstone formations. Fig. 1.

Commemorated in *Maytenus abbottii* van Wyk.

Specimens c. 1 800; in PRU, NH and in a personal herbarium.

* Adams, Berenice Zoe Margaret (later Mrs Matthews) (1925-)

b. Springs, Transvaal, 7 June 1925; biologist and housewife; ed. Natal Univ., Pietermaritzburg, 1943-45, graduating B.Sc. Research chemist, Chamber of Mines Timber Research Laboratories, Johannesburg, 1946-49, investigating the preservation of timber and fabrics against fungal attack and fire underground, the corrosion of steel by underground water, and the culture of fungi. After her marriage in 1949 to Dr John Quarry Matthews, she worked for a year in the Pasteur Institute, Salisbury (now Harare), Zimbabwe, as a clinical pathologist concerned mainly with haematology, and has continued to assist her husband with similar laboratory work since he settled in Richmond, Natal.

Has collected several hundred specimens, many with accompanying illustrations, mainly in Natal, eastern Cape and eastern parts of Zimbabwe; in NU.



FIG. 1. A. T. D. Abbott Constance G. Adams

* Adams, Constance ('Daisy') Georgina (later Mrs Tardrew) (1883-1968)

b. Cape Town, 6 Aug, 1883; d. Johannesburg, 21 June 1968; housewife and collector. She spent the first six years of her life on her parents' farm 'Waterfalls' in the Tulbagh District. Both parents took a keen interest in wild and cultivated flowers and were among the prime movers in the establishment of the first wild-flower show in Tulbagh. In 1890 the family moved to Warrenton where Connie (later called 'Daisy') had her early schooling. At the age of 14 she

* Botanical Research Institute, Department of Agriculture & Water Supply, Private Bag X101, Pretoria 0001.

went to Vredenburg High School in Cape Town and won several prizes for botany, her favourite subject. During school holidays at home she collected specimens for the Albany Museum Herbarium, Dr Schonland being a great friend of her father's.

Before leaving Cape Town, she took a short course in teaching. In 1907 the family moved to Kimberley and she taught for two years. She also became friendly with Dr Wilman, Director of the McGregor Museum, and collected plants for the herbarium. In 1910 she married Peter Tardrew and went to live first in Bloemhof, moving to Johannesburg in 1936, where she became a keen member of the Housewives' League of S. Africa. Fig. 1.

Specimens in GRA, KMG; also some leg. Mrs Tardrew in PRE.

Ref: Information supplied by her youngest daughter, Mrs C. G. Smits of Pinelands, 1983; Codd & Gunn in *Veld & Flora* 70: 67 (1984).

* **Admiraal, Johannes** (1916–83)

d. Pretoria, 2 July 1983.

Ames, A. H. (*fl.* 1853)

Assistant naturalist with the United States North Pacific Surveying Expedition, which spent seven weeks in Simon's Bay in 1853.

A few specimens leg. A. H. Ames are in PH but the major collection was made by Charles Wright (see Gunn & Codd, 1981).

Ref.: Mears in *Proc. Acad. Nat. Sci. Philadelphia* 133: 155 (1981) and pers. comm. Apr. 1983.

* **Anderson, Mrs E.**: see **Ethel West**

Apstein, Dr C. (*fl.* 1898).

Algologist. Originally from Kiel and accompanied the German Tiefsee-Expedition of 1898–99. Collected a few phanerogams around Cape Town from 6–12 Nov. 1898 and made a collection of marine algae, also at Kerguelen, Seychelles and Sumatra; in HBG.

Ref.: pers. comm. from Prof. Kurt Walther, Hamburg, March 1977.

Bain, Thomas Charles John (1830–93).

b. Graaff-Reinet, C.P., 29 Sept. 1830; d. Cape Town, 29 Sept. 1893; roads engineer and builder of many mountain passes; trained by his father, the famous roads engineer, Andrew Geddes Bain. At the request of Sir Henry Barkly, governor of the Cape (q.v. Gunn & Codd, 1981), he collected a number of *Stapelieae*, several of which were described as new by N. E. Brown. In an informative booklet which he wrote, *Knysna District in the Division of George, Colony of the Cape of Good Hope*, London 1871, he listed 41 varieties of timber.

Commemorated in *Hoodia bainii* Dyer.

Ref.: White & Sloane, *The Stapelieae*, Pasadena 1937; Georgina Lister, *Reminiscences of Georgina Lister*, Johannesburg 1960; Burman in *DSAB* 1: 39 (1968); Storrar, *A Colossus of Roads*, Cape Town 1984.

Balkwill, Kevin (1958–)

b. Cape Town, 14 Febr. 1958; student; ed. Witwatersrand Univ., graduating B.Sc. in 1979, H. Dip. Ed. in 1980, B.Sc. (Hons) in 1981; continuing with Ph.D. at Natal Univ., Pietermaritzburg.

Has collected mainly in northern Transvaal and Natal, c. 1 000 of his own numbers and 1 400 in conjunction with other collectors, chiefly J. C. Manning and M. J. Cadman; NU, PRE, J.

Bamps, Paul Joseph Rodolphe (1932–)

b. Louvain, Belgium, 6 Feb. 1932; botanist; ed. Univ. Catholique de Louvain, graduating in 1955. Curator of the African Herbarium, Jardin Botanique National de Belgique, Meise.

Collected 240 specimens in Transvaal and Natal in January–February 1982; in BR, GENT, LG, PRE.

* **Barnard, Thomas Theodore** (1898–1983)

d. Furzebrook, Devonshire, 20 Aug. 1983.

Ref.: Rourke in *Veld & Flora* 70: 39–41 (1984).

Bean, Patricia Anne (née Taylor) (1930–)

b. Longueuil, near Montreal, Canada, 11 July 1930; biologist and teacher; ed. Rhodes Univ. 1947–51, graduating B.Sc., and Univ. of Cape Town, M.Sc. (1962). Teacher in charge of the Field Biology and Nature Study School, Kirstenbosch National Botanic Garden, 1960–64; senior lecturer in biology at the Teachers' College, Bulawayo, 1965–75, specializing in ethology and ecology with emphasis on veld management and game ranching. Returned to South Africa in 1975 and from 1977 on the staff of the Bolus Herbarium, Cape Town, with a special interest in *Agathosma*.

Specimens c. 1 500, mainly in BOL.

Behr, Cathrina Maria (1958–)

b. Johannesburg, 5 July 1958; botanical assistant; ed. Rand Afrikaans Univ. 1977–80, graduating B.Sc. After a short period in the botanic garden of the Botanical Research Institute, she joined the National Botanic Gardens of South Africa and was stationed on the Highveld Botanic Garden, Roodepoort.

Specimens c. 700, from the Krugersdorp-Witwatersrand area, in NBG, PRE.

* **Bell-Marley, Harold Walter** (1873–1946)

b. England (probably Richmond, Surrey), 1873. d. Durban, Natal, 27 Jan. 1946; naturalist and collector. Came to southern Africa as a British soldier and fought in Zimbabwe in 1896, in the Anglo-Boer War for 18 months, and in the Bambatha Rebellion, Natal, in 1906. He returned to Britain where he received his discharge from the army and returned to Natal shortly afterwards, obtaining a post with a firm of shipping agents at the Point in Durban. In Aug. 1918 he joined the Natal Provincial Administration as Principal Fisheries Officer, based in Durban, a post he held until his retirement in 1937.

He paid almost annual visits of several weeks duration to northern Zululand and was one of the first to make extensive collections of birds, eggs, insects (especially butterflies and beetles), crabs, fish and plants in this relatively inaccessible and unhealthy part of the country. He also collected in Zimbabwe. He was one of the first to collect molluscs from the stomachs of deep-sea fish, many of which were undescribed.

His paintings of fish, from fresh-caught specimens, are in the Natal Museum, and some of them were published by other authors, such as J. L. B. Smith and Chubb. His zoological material went to various museums in South Africa, especially Durban, and to major museums in Europe and the United States; his collection of South African birds' eggs is in the Pretoria Museum; his plants have been seen only in NH.

Ref.: S.A. Museums Assoc. Bull. March 1946, p.397; L. S. Whicher in *The Entomologists' Monthly Magazine* 85: 49 (1949) and pers. comm.; A. J. Duke, East London, pers. comm. Aug. 1983; Director, Natal Parks Game & Fish Preservation Board, Pietermaritzburg, pers. comm. Sept. 1983; Director, Durban Museum, pers. comm. Oct. 1983.

* **Bigalke, Erich Heinrich** (1937–)

b. Kimberley, C.P., 12 June 1937; teacher and ethnologist; ed. Rhodes Univ. 1955-59, graduating B.A., U.E.D. and M.A. (1969); Univ. of Edinburgh 1963-64, Dip. Social Anthropology; Ph.D. (Queen's Univ., Belfast) 1983. Taught in schools in S.W. Africa/Namibia, Zimbabwe and Natal 1960-65 and at Univ. of Witwatersrand 1965. Ethnologist, East London Museum, 1966-70, Deputy Director 1971-74, Director from 1974. Interested in social anthropology and use of plants by native tribes (Southern Nguni).

Specimens c. 150, from eastern Cape Province and Transkei; in GRA, some in PRE, BOL.



FIG. 2. Gladys Blackbeard

* **Bisschop, John Henry Roosegaarde** (1898-1984)

d. Kokstad, 27 April 1984.

* **Blackbeard, Gladys Ivy** (1891-1975)

b. Grahamstown, C.P., 19 May 1891; d. Grahamstown, 11 Sept. 1975; gardener and nature lover who maintained a nursery for indigenous plants, especially Amaryllidaceae and succulents, on her property Scott's Farm on the outskirts of Grahamstown, most of which she collected and propagated herself. She supplied plants to the Albany Museum Herbarium and to authorities overseas, such as Von Poellnitz, and assisted Lotsy and Goddijn of Holland during their visit to the eastern Cape Province in 1927. Her collection of some 2 000 plants of *Clivia* was acquired by Mr Gordon McNeil of Ofcolaco in 1962. Fig 2.

Commemorated in *Haworthia blackbeardiae* V. Poelln.

Some specimens in GRA.

Ref.: pers. comm. from Mrs Estelle Brink, Grahamstown, Feb. 1984.

Bojer, Wenceslas (Wencelaus, Wenzel) (1795?-1856)

b. Resanice, southern Bohemia (then part of the Austrian Empire), 23 Sept. 1795 (Vaughan, l.c.) or in Prague, Bohemia, 1797 (Stafleu & Cowan, l.c.); d. Port Louis, Mauritius, 4 June 1856; horticulturalist and naturalist. Trained as a horticulturalist on the estate of Count Caspar von Sternberg at Radnitz, 1810-13. Through the influence of F. W. Sieber (q.v. Gunn & Codd, 1981), he worked in the Imperial Museum at Vienna 1813-1820, where he agreed to join Sieber's band of collectors. Left for Mauritius as assistant to Charles Hilsenberg (1802-24) of Erfurt, arriving on the island in July 1821. He collected extensively in Mauritius, Madagascar and the Comoros, as well as along the coast of East Africa, finally settling in Mauritius. An active member of the local scientific society, he was appointed Professor of Natural History at the Royal College 1826-32 and Curator of the Natural History Museum from 1842. In later years he devoted much of his attention to the sugar industry. Fig. 3.

Commemorated in genera *Bojeria* DC. (1836), *Bojeria* Raf. (1838) and in many species names.

Specimens in W (orig.), BM, C, G-DC, K, P etc. (IH 2,2: 83, 1954); according to Mr P. Bamps (pers. comm. April 1984), there are some in BR collected at 'Caput b. Spei.' It was not previously realized that he had collected at the Cape. This was no doubt during his outward journey in 1821.

Ref. *Hooker's J. Bot. Kew Gdn Misc.* 8: 312 (1856); Vaughan in *Proc. Roy. Soc. Art. Sci. Mauritius* 2: 73 (1958), with portrait; Stafleu & Cowan, *Taxonomic Literature* 1: 261 (1976).

* **Borchardt, E. J.**

Technical assistant on Jonkershoek Forestry Station who, encouraged by Prof. Wicht, collected specimens at Jonkershoek.

Specimens in JF, STE.

* **Bottomley, Averil Maud** (1889–1984)

d. Johannesburg, 23 Feb. 1984.

* **Bremekamp, Cornelis Elisa Bertus** (1888–1984)

d. Bilthoven, Holland, 21 Dec. 1984

Brown, Christopher Justin (1955–)

b. Durban, Natal, 17 June 1955, ornithologist; ed. Natal Univ., graduating B.Sc. in 1976, B.Sc. (Hons) in 1977 and working on Ph.D. at present. Appointed as Ornithologist in the Nature Conservation Division, South West Africa/Namibia, and stationed in Windhoek.

While an undergraduate, he and B. Shapiro (present address unknown) were employed by the Natal Parks Board to undertake a biological survey of the newly proclaimed Itala Nature Reserve in northern Natal. Specimens c. 580, in PRE, NPB.



FIG. 3. W. Bojer

F. A. Brusce

* **Brown, M. G.**

Farmer in the Vryburg District who sent occasional specimens to McGregor Museum, Kimberley, in the 1940's from his farm Palmyra for identification; in KMG.

Ref.: pers. comm. from Mrs Anna Ludlow, 1983.

Brusce, Franklin Andrej (1951–)

b. The Hague, Holland, 24 Feb. 1951; lichenologist; came to South Africa with his parents in 1953; ed. Witwatersrand Univ. 1972–80 graduating B.Sc. (1975), Hons (1976), M.Sc. (1980), for a study on *Xanthoparmelia*. Appointed to National Herbarium, BRI, Feb. 1980 as curator of the lichen collection. Fig. 3.

Specimens c. 3 000, mainly lichens, collected chiefly in Transvaal, Cape and S.W. Africa/Namibia; in PRE.

Bruyns-Haylett, Alfonso Frederik (1891–1963?)

b. Lakeside, C.P., 30 March 1891 as A. F. Bruijns; his parents died while he was still young and he was adopted by the Haylett family, assuming the name Bruijns-Haylett, subsequently changing it to Bruyns-Haylett; d. Pietermaritzburg 1963 (?); engineer; ed. South African College (later Univ. of Cape

Town) 1910–13, graduating with the Diploma in Civil Engineering. Served in Tanzania during World War I, where he was taken prisoner. Joined S.A. Railways & Harbours on his return, becoming A.M.I.C.E. and serving as President, and also M. Inst. T. (Member of the Institute of Transport). Spent most of his career in Natal and retired as Chief Civil Engineer in 1951 after which he was Chairman of the Private Townships Board, Natal Provincial Administration, for several years.

Was interested in succulent plants, particularly aloes, and collected plants, often while supervising the construction of railway tracks, mainly in Natal. On his death his collection, including some cycads, was presented to the Department of Botany, Natal University.

* **Bruyns-Haylett, John Pieter** (1927–)

b. Pietermaritzburg, 8 Aug. 1927; plant pathologist; son of A. F. Bruyns-Haylett; ed. in Faculty of Agric., Natal Univ., 1948–51, graduating B.Sc. with Plant Pathology as a major. Continued studies with a bursary from the Tobacco Control Board and joined the Tobacco Research Station, Rustenburg, as Plant Pathologist, in Aug. 1954. Exempted from M.Sc. examinations and obtained the Ph.D. degree in 1961 for his studies on *Helminthosporium turcicum*.

Joined Dow Chemical Africa (Johannesburg) in Jan. 1961 as manager of Technical Services and Development of all agricultural products in Africa; stationed at the Dow European R & D Headquarters, Horgen, Switzerland, 1970–73, responsible for Dow acaricides and fungicides; from 1974 at King's Lynn, England, firstly as Fungicide Development Manager and, from 1977, Herbicide Development Manager for Europe, Middle East and Africa.

Collected succulent plants with his father and, in 1949, made a herbarium collection for the Natal Parks Board in the Giants Castle area; specimens in NU.

* **Buitendag, Elise**

Botanical Officer at the Lowveld Botanic Garden, Nelspruit, 1971–1981; from Jan. 1984 Plant and Seed Control Officer, Citrus & Subtropical Fruit Research Institute, Nelspruit.

Burelli, Giovanni Guiseppe (1956–)

b. San Daniele, Italy, 7 June 1956; plant pathologist; came to South Africa in Feb. 1959; ed. Witwatersrand Univ. 1974–79, graduating B.Sc. (Hons). Appointed as plant pathologist with Agricura 1979–81; field officer, S.A. Avocado Growers Association 1982 and Director from 1983. Fig. 4.

A keen amateur botanist and naturalist, he undertook a survey of Bophuthatswana with two of his fellow students, Peeters (q.v.) and Gericke (q.v.); specimens c. 2 000, mainly in Dept of Agric. herbarium, Mafikeng, J. PRE, MO.

Burger, Gladys Hever (née Hoare) (1906–)

b. Pretoria, 9 Aug. 1906; housewife and conservationist; ed. Johannesburg Girls' High School. Mar-



FIG. 4. G. G. Burelli

Gladys H. Burger

ried Mauritz Dietz Burger (1901–81) and both became interested in indigenous plants. Served on the committee of the Tree Society of Southern Africa and contributed to the journal *Trees of South Africa* between 1966 and 1980 in the form of articles and photographs, of which Mauritz Burger built up a collection of about 1 500. Fig. 4.

Specimens c. 600, mainly from the Transvaal; in PRE.

Cabu

Collected specimens at the Cape in August–September 1930 and also in the Congo (1936); in BR.

Ref.: IH 2: 111 (1954) and pers. comm. from Mr P. Bamps, April 1984.

* Campbell, Glen Kerry (1944–)

b. Pretoria, 20 March 1944; plant physiologist; ed. Natal Univ., Pietermaritzburg, 1962–65, graduating B.Sc., later Ph.D. Lecturer in plant physiology, Dept of Biological Sciences, Univ. of Natal, Durban, from 1966; interested mainly in seed dormancy and plant hormones.

Undertook a survey of trees in the Stainbank Nature Reserve, Durban, as a postgraduate project; specimens c. 200; in NU.

* Cassidy, T. J.

Business man in Cape Town. Made a collection of plants above Camps Bay; in NBG (Miss Barker in pers. comm. 1982).

* Chater, Sidney Walter (1894–)

b. London; England, 6 October, 1894; journalist and conservationist; served in World War I with rank of Captain and awarded M.C. Settled in Cape Town in March 1925 and was editor of *Organised Agriculture* 1932–61.

Specimens c. 200; in NBG, STE, BOL; was associated with E. G. H. Oliver during studies on *Erica* in the Western Province mountains and built up an extensive collection of colour slides of the S.W. Cape flora.

Cheadle, Vernon Irving (1910–)

b. Salem, South Dakota, USA, 6 Feb. 1910; plant anatomist. Collected material in S. Africa c. 1960 for anatomical study.

* Coetzer, Lourens Abraham (1942–)

Date of birth 9 Oct. 1942, not 10 Sept. as previously recorded (Gunn & Codd, 1981). Received the degree of D.Sc. from Pretoria Univ. for an embryological study on the South African species of *Tylosema*. Has collected c. 860 specimens, in PRU, PRE. Fig. 5.

* Cohen, Ethel (later Mrs Gluckman)

Studied at Witwatersrand Univ. and was awarded the Solly Scholarship at Kirstenbosch in 1938, after which she worked for a while at Kirstenbosch on a revision of *Ehrharta*, then as lecturer in botany, Witwatersrand Univ., for a few years until her marriage. Settled with her husband in Israel.

Specimens in NBG (leg. E. Cohen) and in J (leg. E. Gluckman).

* Collett, Derrick George (1917–)

b. Cradock, Cape, 24 June 1917; botanist and farmer; ed. Rhodes Univ. 1934–36, graduating B.Sc. Appointed to the then Division of Plant Industry in July 1937 and stationed in the National Herbarium, Pretoria; Liaison Officer at Kew 1938–39; on military service, first in the South African Artillery and later with the Royal Artillery, in the Middle East and Italy 1940–46. Transferred to Pasture Research in 1948 and stationed on Towoomba Pasture Research Station near Warmbaths until 1950 when he resigned to take over the family farm, Groen Kloof, at Fish River, Cradock District. Retired to Grahamstown in 1980.

Specimens in PRE (orig.), K etc.

* Collins, Elizabeth ('Liz') Sophia (later Mrs Roos) (1898–1969)

b. Pretoria, 20 July 1898; d. Pretoria, 1969; teacher; trained at Pretoria Normal College and taught at Sunnyside Primary School for a number of years. Sister of 'Min' Collins (q.v.).

Specimens less than 200, leg. L. Collins; in PRE (ex Transvaal Museum).

Ref.: pers. comm. from her daughter Mrs Trollip, Verwoerdburg, July 1984.

* Collins, Maria ('Min') Carolina (later Mrs Holden) (?–1918)

Employed as botanical assistant to Miss Leendertz in the herbarium of the Transvaal Museum, Pretoria, Sept. 1907 to Oct. 1913 when she left to get married. After her marriage she lived in Durban, where she died in 1918. Sister of 'Liz' Collins (q.v.).

There are 244 of her specimens now in PRE (ex Transvaal Museum), collected in the Transvaal.

Ref.: pers. comm. from Transvaal Museum, 1984.

Coppejans, Eric (1948–)

b. Gent, Belgium, 6 March 1948. Marine algologist in the herbarium of the Univ. of Gent. Graduated with a doctorate in botanical sciences at Univ. of Gent and collected in Cape Province and SWA/Namibia during 1970; 1399 specimens in GENT (orig.), 1 077 dupl. in BR (pers. comm. from Mr P. Bamps, April 1984).



FIG. 5. L. A. Coetzer

Doreen Court

Court, Grace Doreen (née Morris) (1928–)

b. Oudtshoorn, C. P., 16 Aug., 1928; teacher and botanist; ed. Rhodes Univ. 1946–48 and 1951, graduating B.Sc., U.E.D. Awarded Solly Scholarship at Kirstenbosch in 1949. Married Jack Gilroy Court 3 Jan. 1953. Taught in Zimbabwe 1963–78; Lecturer in Botany, Rhodes University, from 1979. Her interest in plants, especially succulent plants, was stimulated by her mother, Mrs F. N. Morris (q.v.), and between 1974 and 1979 she travelled widely in southern Africa collecting material and photographs for her book *Succulent Flora of Southern Africa*, Cape Town 1981, Fig. 5.

Collected some specimens in south-western Cape, in NBG, leg. D. G. Morris (the labels were written by Miss W. F. Barker who transposed the initials); also collected succulent plants throughout southern Africa which are chiefly maintained as a living collection in Grahamstown.

*** Crook, Albert Oliff ('Paddy') (1913–84)**

d. Cape Town, 28 April 1984.

*** Culverwell, James (1952–)**

b. Manzini (Bremersdorp), Swaziland, 29 May 1952; naturalist and conservationist; ed. St Mark's School, Mbabane, 1956–67; St Martin's School, Johannesburg, 1968–70; managed a reinforcing steel firm in Mbabane 1973–77; worked in Sabi-Sand Game Reserve in 1978; for the Swaziland National Trust Commission, 1979; from 1980 as warden of the private Mbuluzi Nature Reserve in north-east Swaziland lowveld.

Specimens c. 1 400, in PRE; recent collections mainly from conservation areas in north-eastern Swaziland and Lebombo.

Cuthbert, James Brown (fl. 1931)

M.Sc., Cape Town Univ. c. 1931 for a thesis on the physiology of a dendritic lichen and did some collecting in the Riviersonderend Mts.

*** Dahlstrand, Karl Ake (1904–80)**

d. Port Elizabeth, 2 April 1980 (pers. comm. from Mr Bo Peterson, Göteborg, July 1984).

Davidse, Gerrit (1942–)

b. Grijpskerke, Netherlands, 19 Dec. 1942; botanist; ed. Calvin College, Grand Rapids, Michigan, 1961–65, graduating B.Sc.; Utah State Univ. 1965–68, graduating M.S.; Iowa State Univ. 1968–72, graduating Ph.D. Appointed as Assistant Curator, Missouri Botanical Garden, 1972–78, Associate Curator from 1978. Mainly interested in the tropical American flora, especially Gramineae. Fig. 6.

Commemorated in the names of several American plants, such as *Hierochloa davidsei* Pohl, *Ichthyothera davidsei* H. Robinson, *Strychnos davidsei* Kruckhoff & Barnaby etc.

Visited South Africa in Jan. - Feb. 1974 and collected 612 specimens mainly in northern Transvaal, northern Cape and Natal; 230 in S.W. Africa/Namibia; 243 in Zimbabwe; 104 in Zambia; in MO, PRE.



FIG. 6. G. Davidse

G. B. Deall

*** Deacon, Hilary John (1936–)**

b. Cape Town, 10 Jan. 1936; archaeologist; ed. Univ. of Cape Town, 1953–55 and 1962, graduating B.Sc., B.A. (Hons), M.A., Ph.D. Professional officer and later Deputy Director, Albany Museum, 1963–71; Senior Lecturer in Dept of Archaeology, Univ. of Stellenbosch, 1971–78, and Professor from 1979. Plant specimens were collected in connection with a project on the prehistory of the eastern Cape for comparison with macroscopic plant remains from cave deposits and as a pollen reference collection.

Specimens and pollen slides in GRA.

Deall, Graham Basil (1950–)

b. Harare, Zimbabwe, 14 June 1950; ecologist; ed. Natal Univ., Pietermaritzburg, graduating B.Sc. in 1971, B.Sc. (Hons) in 1979. Appointed to the Botanical Survey Section of the BRI in 1980 and is

undertaking survey work in the eastern Transvaal. Fig. 6.

Specimens c. 2 000, collected in Lesotho (mosses only) and eastern Transvaal; in PRE.

* **Dekenah, Albert Jacob** (1907–81)

d. Riversdale, C.P. 11 July 1981.

* **Denman, Mary**

d. Port Elizabeth, c. 1980. Matron of Empilweni Hospital, Port Elizabeth, for many years. She had a Licentiate in music and painted wild flowers which were exhibited on two occasions in Port Elizabeth. Wife of Earle L. Denman, author of *Alone to Everest*, and accompanied her husband to the Himalayas where she also painted some of the wild flowers (pers. comm. from Mrs Auriol Batten, 1982).

Specimens in GRA (Tölken, 1971).

* **D'Estourgies**

The collection which he made in the Transvaal was deposited in BR in 1877 (pers. comm. from Mr P. Bamps, Brussels, April 1984).

De Wit, Hendrik Cornelis Dirk (1909–)

b. Purmerend, Holland, 24 Oct. 1909; botanist; ed. Amsterdam Univ. (Drs. 1937) and Pretoria Univ. (Ph.D., Univ. of S. Africa, 1941). Employed as Agricultural Research Officer, Dept of Agriculture, S. Afr., 1938–40, when he undertook a revision of the genus *Setaria*; Botanist at Buitenzorg, Java, 1941–45; Botanist, Flora Malesiana Foundation, Leiden, 1946–53; from 1953 Senior Lecturer in Systematic Botany, University for Agriculture, Wageningen; from 1959 Professor and, from 1969 until his retirement in 1980, Director of the Laboratory of Plant Taxonomy and Plant Geography. Publications deal with systematic botany, mainly of the Asian tropics, history of botany and biology.

Specimens c. 4 000, from the Cape Province, Natal, Swaziland and Transvaal; in L. WAG.

Duncan, Graham Dugald (1959–)

b. 28 Nov. 1959; horticulturalist; trained at Cape Town Technikon obtaining the National Diploma in Horticulture and appointed to Kirstenbosch Botanic Garden.

Specimens c. 100 from S.W. Cape; in NBG.

* **Duparquet, Rev. C.** (1830–88)

Portrait reproduced from *Viagens na Cimbebasia*, Museu de Angola, Luanda, 1953. Fig. 7.

* **Du Plessis, Christiaan Jacobus** (1944–)

b. Johannesburg, Transvaal, 19 Nov. 1944; science teacher; ed. Pretoria Univ. 1963–72, graduating B.Sc., later H.O.D. (1969) and M.Sc. (1972) for a thesis entitled 'n Floristiese-ekologiese studie van die plaas Doornkop in die distrik Middelburg, Transvaal'. Taught from 1971–77 and from 1978 Head of the Department of Natural Science, Soweto College of Education. Fig. 7.

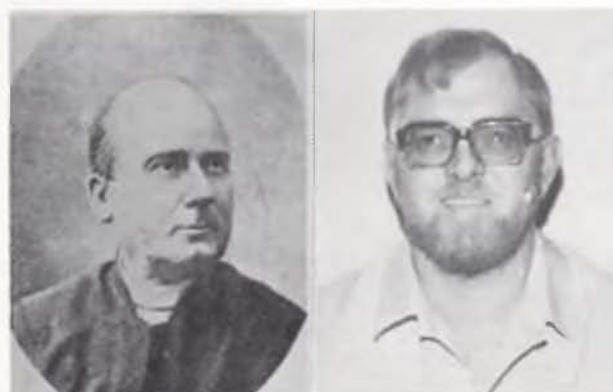


FIG. 7. Rev. C. Duparquet

C. J. du Plessis

Specimens c. 1 900, from Middelburg District, Transvaal; in PRU, PRE.

* **Ecklon, Christian Frederick** (1795–1868)

We are grateful to Dr Alfred Hansen of the Botanical Museum, University of Copenhagen, for the following correction: Ecklon was born in Aabenraa (in German, Apenrade), northern Schleswig. This part of Denmark belonged to Germany from 1864–1920 but in 1795 (and from 1920) belonged to Denmark.

* **Edwards, Elizabeth M.** (fl. 1945)

Studied at Natal Univ., Pietermaritzburg, during the early 1940's and was appointed as biology mistress at Girls' Collegiate School in 1946. Collected while a student, mainly in her home territory, East Griqualand; specimens in NU (pers. comm. from Dr K. D. Gordon-Gray, Natal Univ., 1983).

Specimens in NU, J (Tölken, 1971).

* **Eschscholz, Johann Friedrich** (1793–1831)

b. and d. Dorpat, or more recently Tartu, Estonia (not Latvia as stated previously) (comm. from Dr Alfred Hansen, Botanical Museum, Copenhagen University, 1983).

Evrard, Charles Marie (1926–)

ed. Univ. Catholique de Louvain, graduating in 1949 and doctor of botanical sciences in 1964. Professor at the Univ. of Louvain-la-Neuve, Belgium.

Collected 479 specimens (Nos 8810–9289) in Cape Province and SWA/Namibia; also collected in the Congo; in BR (IH 2,2: 188, 1957; pers. comm. from Mr P. Bamps, April 1984).

* **Fawkes, Madeleine ('Madge') Charlotte** (1880–1954)

b. Malta, 14 Dec. 1880; d. Black Bourton, near Oxford, England, 15 Sept. 1954; artist and collector; trained at the Slade School of Art, Paris, and in Cornwall. She visited her brother, Valentine Fawkes, who farmed near Ficksburg, in 1922–23, 1931–37 and in 1952, during which she painted wild flowers and took an active part in the local Horticultural Society. Some of her paintings, mainly of

flower arrangements, were exhibited by the Royal Academy and, in 1939, the Grenfell Medal was awarded to her by the R.H.S. for her exhibition of paintings of Lesotho wild flowers. She also painted landscapes and portraits. She was a keen gardener and showed considerable skill in garden designing. Fig. 8.

Specimens and paintings in NBG.

Ref.: letter from Mrs A. M. Tennent, Ficksburg, Aug. 1982; Codd & Gunn in *Veld & Flora* 68: 93–94 (1982).



FIG. 8. Madge C. Fawkes

J. M. Feely

* **Feely, James Michael** (1934–)

b. Tanga, Tanzania, 17 Jan 1934; self-taught naturalist; ed. Univ. of Cape Town. Game ranger at Lake St Lucia and Umfolozi Game Reserves 1955–60; Luangwa Valley, Zambia, 1961–65 then, after a period as game rancher, field officer for Wilderness Leadership School until 1982; from 1983 Senior Research Assistant in Dept of Botany, Univ. of Transkei, Umtata. Published 'Observations on *Acacia albida* in the Luangwa Valley' in *Puku* 3: 67–70 (1965), and 'Did Iron Age man have a role in the history of Zululand's wilderness landscapes' in *S. Afr. J. Sci.* 76: 150–152 (1980). Currently investigating the ecological consequences and constraints regarding Iron Age farming settlements in Transkei. Fig. 8.

Specimens c. 400 collected in Zululand (in NPB, NU) and c. 200 in Zambia (in FHO).

Fellingham, A. C. (née Bester) (1933–)

b. Vryburg, C. P., 23 Oct. 1933; botanical technician; ed. Potchefstroom Univ. c. 1954, graduating B.Sc. After various posts in medical research, she was appointed as Chief Technician in the Botanical Research Unit, Stellenbosch.

Specimens c. 500, mainly from S.W. and S. Cape, in STE.

* **Ferrar, Evelyn**

Assistant to Dr M. Wilman, McGregor Museum, Kimberley, in the 1940's who collected specimens with Dr Wilman; in KMG.

* **Forbes, Helena Madelain Lamond** (1900–59)

Further references: obituary in *S. Afr. J. Sci.* 55: 317 (1959); Schrire in *Bothalia* 14: 223 (1983).

Fourie, Stephanus Petrus (1949–)

b. Potchefstroom, Transvaal, 3 Sept. 1949; conservationist; ed. Rand Afrikaans Univ., graduating B.Sc. in 1973 and B.Sc. (Hons) in 1974. Spent his early years in Zimbabwe (then Rhodesia) and was awarded the shield for 'student of the year' in the Rhodesian army in 1968. Appointed to the Transvaal Div. of Nature Conservation in 1975; Senior Professional Officer, 1978; Chief Professional Officer 1983 and from 1984 head of the section for Flora and Environmental Conservation; mainly concerned with the conservation of rare and endangered plant species in the Transvaal.

Commemorated in *Protasparagus fouriei* Oberm.

Specimens c. 3 200, mainly from Transvaal; in Nature Conservation herbarium, Lydenburg, and PRE.

* **Froembling, George Herman Walter** (1859–1941)

b. London, England, Dec. 1859; d. Cape Town, 7 June 1941; pharmaceutical chemist; studied in Germany, qualifying in 1889 and with Ph.D. (Munich) in 1896. Came to Cape Town in 1897 and set up a pharmaceutical business, experimenting with drugs in his spare time in association with the late Dr Hahn and Dr Penther of the firm Wentzel & Schleswig, and published papers on drugs used in S. African native medicines. In 1909 he was President of the Cape Pharmaceutical Society and was instrumental in the formation of the S. African Pharmaceutical Society. In his botanical activities he was often in contact with Marloth, Bolus and Dümmer.

Commemorated in *Agathosma froemblingii* Dümmer.

Specimens collected around Cape Town, mainly from 1897–98, in B (Index Herbariorum, Collectors 2,2: 211, 1957), about 500 in NBG (Rourke in *Veld & Flora* 69: 159, 1983) and some in E. Also collected in Chile and Venezuela, 1885–86 (in M).

Ref.: *Afr. World* 26 July 1941, p. 61; Moore in *Veld & Flora* 69: 158–60 (1983).

* **Fuller, Edward Barnard** (1868–?)

b. Mowbray, Cape Town, 29 June 1868; d. ?; medical practitioner; ed. S.A. College, Cape Town, and Edinburgh Univ. graduating M.B., C.M. (1891), F.R.C.S.E. (1892). Started a practice in Cape Town in 1892 and was a pioneer in many fields, including public health, medical education and surgical urology. He lectured in clinical surgery at Cape Town University, served on innumerable committees and was a keen sportsman.

Collected some specimens at the Cape c. 1886; in E (Hedge & Lamond, *Index of Collectors in the Edinburgh Herbarium*, Edinburgh 1970).

Ref.: *South African Who's Who*, Johannesburg 1937; Burrows, *A History of Medicine in South Africa*, Cape Town 1958.

* **Garabedian, Star** (1895–1978)

b. 1895, according to Dr Alfred Hansen of the Botanical Museum, University of Copenhagen (pers. comm. 1983).

* **Gentry, Howard Scott** (1903–)

b. Temecula, California, USA, 10 Dec. 1903; biologist; graduated B.A. at Univ. at California, Berkeley, in 1931 (zoology), Ph.D. at Univ. of Michigan, Ann Arbor, in 1946 (botany). Farmed in California 1927–31; free-lance biologist 1933–40; fossil hunter for Amer. Mus. Nat. Hist. New York, 1934–40; emergency war work investigating rubber plants, 1942–45; research botanist, Allan Hancock Foundation, Los Angeles, 1946–50; plant exploration and investigating new crops with U.S. Dept Agric., 1950–71; research botanist, Desert Botanical Garden, Phoenix, Arizona, 1972–81; from 1982 Associate Director, Amerind Agrotech Laboratory, Sacaton, Arizona.

Collected in South Africa during 1960–61 on behalf of the USDA New Crops Branch, about 600 gatherings (Nos 18612–19218) including many herbarium specimens; in US. PRE. etc.

Gericke, Nigel Peter (1955–)

b. Johannesburg, 26 June 1955; medical student; ed. Witwatersrand Univ., graduating B.Sc. (Hons) in 1979 and continuing for M.B., Ch.B. Interested in ecology and the S. African flora, he undertook a survey of Bophuthatswana with two of his fellow students, Peeters (q.v.) and Burelli (q.v.); specimens c. 2 000, mainly in Dept of Agric. Herbarium, Mafikeng, J. PRE, MO.

Germain, René Antoine (1914–1982)

b. Monceau-Imbrechies, Belgium, 10 March 1914; d. Ganshoren, Brussels, 4 Feb. 1982; agronomist; ed. Univ. Catholique de Louvain, graduating in 1934 and doctor of botanical sciences in 1950. Stationed in the Congo c. 1940–1950 where he collected about 9 000 numbers; 84 collected in Natal and Cape Province (Nos 1509–1592) in August–September 1942; in BR (IH 2,2: 222, 1957; pers. comm. from Mr P. Bamps, Brussels, April 1984).

* **Gerstner, Father Jacob** (1888–1948)

Father Gerstner's collecting books are in the Dept of Botany, University of Zululand (pers. comm. from Prof. E.J. Moll).

* **Gibbs Russell, Garland Elizabeth**

Wrongly listed under Russell in Gunn & Codd, 1981.

* **Gluckman, Mrs E.:** see Ethel Cohen**Godfrey, Robert Kenneth** (1911–)

b. Bloomsbury, New Jersey, USA, 29 Aug. 1911; botanist. Collected in South Africa in 1952 for the U.S. Dept of Agric. New Crops Branch, chiefly planting material of alkaloid-producing or drug plants, and also some herbarium specimens.

Goetghebeur, Paul (1952–)

b. Ostend, Belgium, 4 Nov. 1952. Botanist in the Herbarium of the Univ. of Gent, where he graduated in botanical science. Collected c. 230 specimens in Transvaal and Natal in January–February 1982; in GENT (orig.), BR, LG, PRE (pers. comm. from Mr P. Bamps, Brussels, April 1984).

* **Gordon-Gray, John Louis** (1916–)

b. in the Cape (Wynberg ?), 12 Aug. 1916; army officer and collector; after Potchefstroom Boys' High School he entered a cadet officer's course in 1935. Served in Western Desert, Italy and seconded to British Army towards end of World War II. Returned to S. Africa after the war and retired in 1964, settling at The Haven, Transkei. Brother-in-law of Dr K. D. Gordon-Gray, who encouraged him to make a comprehensive collection, particularly of forest plants, within a ten mile radius of The Haven (pers. comm. from Dr K. D. Gordon-Gray, Sept. 1982). Specimens in NU; the bryophytes were sent to MO for Dr Magill.

* **Gorter, Gerard Jacobus Marinus Anne** (1913–)

First name wrongly spelt 'Gerhard' in Gunn & Codd (1981).

* **Gouws, Jozef Benjamin** (1909–)

b. Amersfoort, Transvaal, 13 June 1909; botanist; ed. Pretoria Univ., graduating B.Sc. (1933), M.Sc. (1941), D.Sc. (1947), with further study at Hohenheim-Stuttgart in 1962. Appointed Lecturer, Department of Botany, Pretoria Univ., later Senior Lecturer, Pretoria Bantu Normal College, then Professor of Botany, Univ. of western Cape until his retirement.

Specimens c. 1 000, from northern and north-eastern Transvaal, and south-western Cape; in PRU, PRE, UWC.

Gubb, Andrew Alan (1950–)

b. Cape Town 24 April 1950; botanist; ed. Cape Town Univ., graduating B.Sc. (Hons) in 1977. Was a ranger at Cape of Good Hope Nature Reserve 1970–72 and, from 1973, ecological botanist and curator of the herbarium, McGregor Museum, Kimberley, where he has studied habitat utilization by game and phytosociology. Also interested in remote sensing research.

Specimens c. 16 000, mainly from N. Cape, in KMG; some from S.W. Cape in NBG.

* **Guy, Robert Douglas** (1932–)

b. Pietermaritzburg, Natal, 26 Dec. 1932; farmer; ed. Rhodes Univ., graduating B.Sc.

Specimens c. 50, collected in Zululand, in NPB, NU.

Hargreaves, Bruce James (1942–)

b. Stockton, California USA, 18 April 1942; botanist; graduated B.A., Univ. of California in 1964; M.S.P.H., Univ. of N. Carolina in 1970; Ph.D. New

York Univ. in 1974. Instructor, New York Univ. Medical Centre 1975–76; Lecturer, Univ. of Malawi 1976–81; Senior Lecturer and head of herbarium and botanic garden, Univ. of Lesotho from 1983. Interested in medicinal and succulent plants.

Specimens c. 3000 coll. in Malawi, in MAL; 800 in Lesotho, in ROML.

* **Harris, Mrs Eric (née Zoë Anne Borlase)** (1895–1970)

b. Natal, 26 July 1895; d. Pretoria, Sept. 1970; housewife. Married Eric Harris, who farmed near Modder River Station, in 1923. Encouraged by Miss Wilman she collected plants on their farm Three Oaks, especially bulb plants, some of which were sent on to Kirstenbosch. Retired to Pretoria.

Specimens in KMG, recorded under the name Eric Harris (b. Kimberley, 4 May 1893).

Ref.: pers. comm. from Mr Eric Harris, Pretoria, 1982.

* **Heginbotham, Marjorie Constance** (later Mrs Schirach) (1921–)

b. Izmir, Turkey, 1 Aug. 1921, and spent most of her childhood in Greece where she was educated privately. Came to South Africa with her parents in June 1941 and worked for several years as librarian at Kirstenbosch until her marriage.

Collected over 300 specimens, mainly from south-western Cape; in NBG.

* **Henderson, Murray Ross** (1899–1982)

b. Banchory, Aberdeenshire, 1899; d. Aberdeen, Scotland, Oct. 1982. Studied botany at Aberdeen Univ. after World War I. Appointed in 1921 to Museums Dept, Federated Malay States, as botanist; in 1924 Curator of the herbarium in the Singapore Botanic Garden and Director from 1949 until his retirement. During World War II he spent a few years from 1941 at Kirstenbosch where he published notes on South African cycads, returning to Singapore in Dec. 1945.

Ref.: R. E. Holttum in *The Gardeners' Bulletin, Singapore* 35: 235–236 (1982).

Herman, Paul Philippus Johannes (1955–)

b. Vanderbijlpark, Transvaal, 13 July 1955; botanist; ed. Pretoria Univ. 1973–76, graduating B.Sc. in 1975, B.Sc. (Hons) in 1976, M.Sc. in 1983 for a study entitled 'Die stingel- en blaarmorfologie van die Suider-Afrikaanse *Pavetta*-spesies.' Appointed to the Herbarium Section, BRI, from March 1979 and, from April 1984, with the Anatomy-Cytology Section, specializing in wood anatomy. Fig 9.

Specimens c. 1 510, collected alone and together with other members of BRI staff, in Transvaal, OFS, north-east Cape and the Karoo; in PRE.

Horn, D.H.S. (fl. 1960)

On the staff of the Chemical Research Inst., CSIR, and collected specimens in connection with



FIG. 9. Paul Herman

Nancy M. E. Horrocks

an investigation of aromatic substances in plants; emigrated to Australia.

275 specimens in PRE.

* **Horrocks, Nancy Margaret Emily (née Gillies)** (1902–)

b. Georgetown, New Zealand, 4 April 1902; botanical assistant. Came to S. Africa in 1930 and was Technical Assistant in Compton Herbarium 1959–75, during which time she mounted over 42 000 sheets. Fig. 9.

Specimens c. 200, from S.W. Cape; in NBG.

Hosten, Lilliane Francine (née Willems) (1932–)

b. Likasi, Zaïre, 6 Feb. 1932; botanist and housewife; came to South Africa in 1950 and studied at Stellenbosch Univ., graduating B.Sc. in 1953 and M.Sc. (Botany) in 1957. Worked at Rijksplantentuin, Brussels, during 1956 and at Compton Herbarium, Kirstenbosch, 1958–59. After her marriage she settled in Port Elizabeth and worked part-time at UPE. Interested mainly in Mesembryanthemaceae and in drift seeds.

Specimens in STE, PRE (leg. Willems) and UPE.

* **Howlett, J.C.**

Technical Assistant in Division of Botany and Plant Pathology, stationed in Pretoria from 1912–1936 and in Durban Botanic Station 1936 until his retirement in 1951; accompanied Dr I.B. Pole Evans on some of his expeditions.

Ref.: Schrire in *Bothalia* 14: 232 (1983).

Hugo, Loretta (later Mrs Van Zyl) (1942–)

b. Moorreesburg, C.P., 8 Nov. 1942; botanist; ed. Stellenbosch Univ. 1972–74, graduating B.Sc., later M.Sc. Appointed at Botanical Research Unit, Stellenbosch, in 1976 and from 1980 Curator of the Herbarium. Married Percy van Zyl, 29 July 1982 and resigned from her post shortly afterwards.

Specimens c. 3 000, from S.W. Cape; in STE, PRE.

* **I'Ons, John Henry** (1936–)

b. Johannesburg, 16 Jan. 1936; pasture ecologist; ed. Natal Univ., Pietermaritzburg, 1954–59, graduating B.Sc. (Agric.) in 1958, M.Sc. (Agric.) in

1961. Pasture Research Officer, Swaziland, 1959 – 68; in South African Dept Agric. as Pasture Research Officer 1968 – 77 and Agricultural Counsellor, Australia, 1978 – 82. Resigned in 1982 and settled in Australia. Undertook an ecological survey of Swaziland for which the specimens were identified by Prof. Compton.

Specimens collected mainly on Malkerns Research Station, Swaziland, and at Estcourt and Dohne Research Stations; in PRE and Malkerns Research Station.

Immelman, Kathleen Leonore (1955–)

b. East London, C.P., 26 Dec. 1955; botanist; ed. Natal Univ., Pietermaritzburg, 1974 – 77, graduating B.Sc., B.Sc. (Hons); Cape Town Univ. 1978 – 79, M.Sc. for a revision of South African spp. of *Holothrix*; studying *Justicia* and allied genera for doctorate. Appointed to Flora Research team, BRI, 1980 and has written up Simaroubaceae and genera *Acridocarpus* and *Triaspis* for the *Flora of Southern Africa*. Fig. 10.

Specimens c. 600, from E. Cape, northern Natal, Transvaal and S.W. Africa/Namibia.



FIG. 10. Kathy Immelman

A. J. Joubert

*** Isaac, William Edwyn (1905–)**

Prof. Isaac was Professor of Botany at Nairobi Univ. College from 1961 until his retirement in 1970 and was not subsequently at Cardiff Univ. as previously stated (Gunn & Codd, 1981).

*** Jacobs, Marius (1929–1983)**

d. Leiden, Holland, 28 April 1983; taxonomist, conservationist and biohistorian.

Ref.: Van Steenis in *Flora Malesiana* Bull. 36: 3869 – 3871 (1983); Kalkman in *Blumea* 29: 1 – 12 (1983), with portr. and list of publications.

*** Jacot Guillarmod, Amy Frances May Gordon (1911–)**

Dr Amy Jacot Guillarmod graduated with the degree of D.Sc. from St Andrews Univ., Scotland, not Ph.D. as previously stated (Gunn & Codd, 1981).

*** Jenkins, Thomas J.**

Appointed in June 1907 as a clerk at the Transvaal Museum, Pretoria, and also did collecting and cata-

loguing while at the Museum, concentrating largely on plant collecting. In 1913 he was transferred on promotion to the Dept of Lands and shortly afterwards to the Dept of Inland Revenue, where he spent most of his career in the Public Service.

Over 1 200 specimens in PRE (ex Transvaal Museum), collected mainly in the Transvaal, also around Durban and in Mozambique. His collecting activities ceased after leaving the Transvaal Museum in 1913.

Ref.: pers. comm. from Transvaal Museum, 1984.

*** Johnstone, Douglas ('Das') Ian (fl. 1950)**

Studied at Natal Univ., Pietermaritzburg, 1945 – 49, during which time he collected quite extensively on Noodsberg. Employed at Hlobane where he continued to collect for some time (pers. comm. from K.D. Gordon-Gray, Sept. 1982).

Specimens in NU, NH.

*** Joubert, Adriaan Jacobus (1901–)**

b. on farm Derdeheuvel, Montagu district, C.P., 27 May 1901; science and biology teacher; ed. Stellenbosch Univ. graduating B.Sc. in 1923, H.S.O.D. in 1927, and B.Ed. in 1933. Spent his teaching career at Hoërskool Ladismith; appointed as science and mathematics teacher in 1924, later Vice Principal and as Principal from 1953 until his retirement in 1966. With the introduction of biology to the syllabus in 1926, he undertook the teaching of the subject, although without previous training in this direction. One of his first undertakings was to build a rock garden at the school and he later maintained a collection of succulents at his home. His collection came to the notice of Prof. G.C. Nel of Stellenbosch Univ. with the result that plants were sent to Stellenbosch and to Kirstenbosch. He specialized at various times in the Stapelieae, *Gibbaeum* and *Lithops*. Prof. Nel acknowledges his assistance in the *Gibbaeum Handbook*, London 1953, and White & Sloane presented him with copies of their books on the Stapelieae and Euphorbieae in recognition of material of living plants supplied. After retiring in 1966 his interest in *Lithops* induced him to undertake temporary teaching posts at inland centres such as Petrus Steyn and Merweville. He contributed articles, with colour photographs, to the *Landbou-weekblad* on *Lithops* (31 Oct. 1981) and *Gibbaeum* and *Muiria* (12 Nov. 1982). Fig. 10.

Commemorated in *Hereroa joubertii* L. Bol., *Conophytum joubertii* Lavis, *Sceletium joubertii* L. Bol.

Specimens in BOL.

Karis, Per-Ola (1955–)

b. Stockholm, Sweden, 28 Aug. 1955; botanist; ed. Stockholm Univ. 1976 – 80, graduating B.Sc. At Kirstenbosch Sept. 1980 to Feb. 1981 studying *Metasia* and *Lachnospermum*.

Specimens c. 200; in S, NBG.

*** Keit, Julius Wilhelm (1841–1916)**

His first name was inadvertently omitted in Gunn & Codd (1981).

* **Kent, Charles C.**

Plant Inspector, Div. of Entomology, Dept of Agric., from 1921; stationed in Durban until 1954 when he was transferred to East London.

Ref.: Schrire in *Bothalia* 14: 223 (1983).

* **König (Koenig) Johann Gerhard (1728–85)**

b. Courland, Latvia, which was not a province of Denmark as stated (Gunn & Codd, 1981).

Krantz, P.A. (fl. 1894)

Technical Assistant and taxidermist at Transvaal Museum who collected material for the Museum, including some plant specimens (e.g. Lekkerkraal and Matlabas River, near Thabazimbi, Jan. 1894); in PRE.

Ref.: Staats Almanak, Z.A. Republiek, 1898, 1899.

* **Kresfelder, Louis J. (1898–)**

b. Pretoria, 1 June 1898 and attended school in Pretoria. Joined the government service in March 1912 as clerical assistant and transferred to the Division of Botany and Plant Pathology in October 1914. In addition to clerical work, he was required to pay regular visits to the Groenkloof Experiment Station and, from 1916, was also involved in the citrus cancer campaign and in nursery inspection work (see Pole Evans, I.B.). Later became a laboratory assistant under E.M. Doidge (q.v.) and her successor, J.E. Vanderplank (q.v.), finally retiring on 1 June 1958 after which he settled in Villiers, OFS.

Specimens in PREM (Tölken, 1971).

* **Lamb, James Dugal Cameron (1853–1937)**

(As Lamb, J.A.C., in Tölken, 1971; I.H. 2,3: 406, 1972; Gunn & Codd, 1981). b. probably in Berkshire, England, 1 June 1853, of Scottish descent; d. Cape Town 1937; horticulturalist. After a period of training at Kew, he settled in Rondebosch and was the gardener and estate manager at Belmont Park House, the home of Alfred Ebdon, until 1918 when the property was sold. He then moved to Oxford Road, Observatory, where he worked privately on garden lay-outs and maintained a nursery. He was a member of the Cape Town Mountain club from 1898 – 1923 and collected plants, geological specimens and other natural history material during his walks.

His collecting numbers exceed 4 000, collected mainly around Cape Town, but also at places such as Worcester, the Karoo, Benoni, Mafikeng, Botswana and Zimbabwe. They were kept as a private collection, the best of which (over 1 000) were donated to SAM in 1932, where they were remounted with the original labels in his handwriting. Unfortunately only the month and not the year of collecting was recorded. Fig. 11.

Ref.: *Annual Rep. S. Afr. Mus.* for 1932; pers. comm. from his granddaughter, Mrs Molly Dowson of Pinelands, Cape, his great granddaughter, Mrs Cynthia Kemp of Johannesburg and Dr J.P. Rourke, Compton Herbarium, Cape Town; Codd & Gunn in *Veld & Flora* 70: 61 (1984).

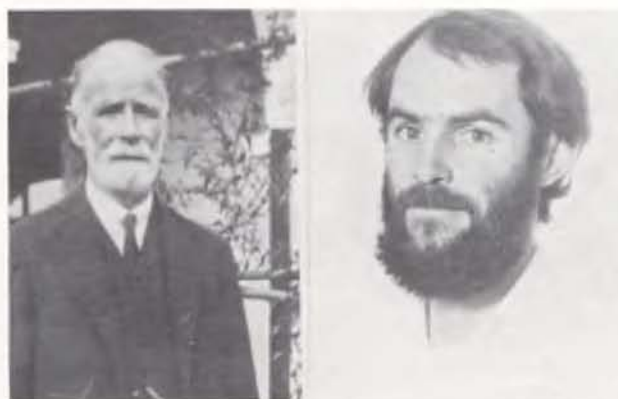


FIG. 11. J. D. C. Lamb

D. J. McDonald

* **Lang, Herbert (?–1957)**

A German by birth, he emigrated to the United States where he was associated with the Field Museum of Natural History, Chicago, for some years. Lived in Cape Town 1926 – 27 and in Pretoria from 1927 until his death in 1957. Married the owner of Eaton Hall, a boarding house in Skinner Street near the Transvaal Museum, and accompanied several of their expeditions, during which he collected and took excellent photographs. Organized a major expedition to the Kalahari sponsored by Mr Arthur S. Vernay on behalf of the Chicago Museum, known as the Vernay-Lang Kalahari Expedition, March–September 1930. In 1931 he was the first to make a substantial herbarium collection in the northern Kruger National Park. In 1957, shortly before his death, the Transvaal Museum acquired his extensive collection of zoological and botanical photographs.

Albums of his plant photographs and c. 600 specimens (ex Transvaal Museum) in PRE.

Ref.: FitzSimons & Brain in *Tvaal Mus. Bull.* No. 13 (1972).

Latrobe, Peter (1795–1863)

Associated with the Moravian ministry in Fulneck, England. There are some specimens in PH (*Mears in Proc. Acad. Nat. Sci. Philadelphia* 133: 155, 1981, and pers. comm. Apr. 1983) attributed to 'Latrobe, Peter, CBS' ex Herb. Schweinitz, but Latrobe may not himself have visited the Cape. One wonders if he was perhaps the son of C.I. Latrobe, also of the Moravian ministry, who made an extensive tour of mission stations in South Africa and published *Journal of a Visit to South Africa in 1815 and 1816*, London 1818.

* **Lavoipierre, Michael (fl. 1944)**

Studied at Natal Univ., Pietermaritzburg, during World War II and collected some plants while a student, mainly together with E.A.C.L.E. Schelpe during an excursion to Port St Johns. Specimens in NU (pers. comm. from Dr K.D. Gordon-Gray, Sept. 1982).

* **Lawson, Archdeacon George Mervyn (1865–1945)**

b. on one of the Channel Islands (probably Jersey) in 1865; d. Kimberley, 17 Aug. 1945; grew up in London. After obtaining a B.A. degree, he pre-

pared himself for the ministry and, after taking Orders, he emigrated to South Africa to do mission work. He made his headquarters at Papkuil in Griqualand West, attending to various missions from Schmidtsdrift to west of Upington.

He was interested in succulent plants and took specimens to Dr Wilman of the McGregor Museum for identification, some of which were transmitted to Bolus Herbarium. Encouraged by Archdeacon F.A. Rogers, he also made herbarium specimens.

Commemorated in *Ruschia lawsonii* (L. Bol.) Schw.

Specimens in KMG.

Ref.: Information supplied by Mr W.M. van Zyl of Paarl and Mr A. Gubb, McGregor Museum, Kimberley; Codd & Gunn in *Veld & Flora* 70: 68 (1984).

* **Leighton, Frances Margaret** (later Mrs W.E. Isaac) (1909–)

Daughter of Francis Leighton, a brother of James Leighton (not daughter of James Leighton as stated, Gunn & Codd, 1981).

* **Lemaire, C.H.**

The information included in Index Herbariorum, Part II, Collectors, 3 (I–L): 429 (1972), appears to be incorrect. Mr P. Bamps of BR informs us (April 1984) that Capt. Charles Lemaire (1863–1926) gathered some pictures of plants, without specimens, during his 'Mission scientifique du Katanga' in 1898–1900. H. Lemaire (no dates), agronomist, collected some 550 specimens in the 'Equateur' District of Congo in 1913–14. There is no evidence in BR that either of them, or 'Lemaire et al.' collected in the Cape Province, so this name should be excluded from our list.

* **Lennox, Fay** (later Mrs **Boik**) (1924–)

b. Harding, Natal, 4 Sept. 1924; farmer and nature lover; ed. privately and at Durban Girls' College until 1942. Interested in wild life and indigenous plants and, although she has not collected extensively herself, has assisted others, such as Mr L.E. Taylor, Prof. Olive Hilliard and Mr B.L. Burtt, in the Weza/Ingeli area. Married Reginald Bruce Boik, farmer and business man, in Sept. 1977.

Specimens c. 200; in NU, E.

* **Levring, Carl Tore Christian** (1913–82)

b. Lund, Sweden, 21 Febr. 1913; d. Gällstad, Sweden, 30 Jan. 1982; phycologist; ed. Lund Univ., Fil. Dr Docent 1940; Asst. Prof., Göteborg, 1942; head of the Marine Botanical Institute, Göteborg, 1948; Professor 1969.

Collected marine algae and visited S. Africa in 1947; specimens in GB etc. (IH 2,3: 437, 1972).

Commemorated in genera *Levringia* Kylin, *Levringiella* Kylin.

Ref.: pers. comm. from Mr Bo Peterson, Göteborg, July 1984.

* **Liebenberg, Louis Christiaan Cronje** (1900–1985)

d. Pretoria, 26 Feb. 1985.

Lindner, Otto (1852–1945)

b. Berlin, Germany, 10 Aug. 1852; d. Ypres, Belgium, 16 Feb. 1945; technician. Adopted Belgian nationality in 1888. He was sent by the 'Etat indépendant du Congo' to Damaraland from Feb. to July 1886 in order to recruit man-power and during his stay he collected plants which he gave to the then Director of the Jardin botanique de l'Etat (BR).

Ref.: pers. comm. from Mr P. Bamps, Brussels, Aug. 1984.

* **Linley, John Stanley** (1909–)

b. Caledon, C.P., 9 March 1909; pharmacist and conservationist; ed. Cape Technical College, qualifying as a pharmacist in 1931. Was part-time lecturer in the Dept of Pharmacy 1932–48, specializing in pharmacognosy; Chief Pharmacist, Cape Town City Council, 1935–65.

Collected several hundred specimens in the southwestern Cape Province mainly for (and often with) Dr Joyce Lewis, hence largely Iridaceae but also Orchidaceae, Liliaceae, Amaryllidaceae and Ericaceae; accompanied Dr John Hutchinson for a day during his visit to Cape Town, and represented the Tercentenary Foundation in certain nature conservation projects. Specimens in SAM.

* **Louw, Hester E.**

d. Kimberley c. 1977. Taught at the Preparatory School, Beaconsfield, in the 1970's.

Collected in the Cape Province, especially in the Kimberley area; specimens in KMG (pers. comm. from Mr A. Gubb, KMG).

Lowrey, Timothy Kemper (1953–)

b. Woodland, California, USA, 12 Aug. 1953; botanist; ed. Utah State Univ. 1971–76, graduating B.Sc. in 1974 and M.Sc. in 1976; and Univ. of California, Berkeley, 1976–81, graduating Ph.D. Post-doctoral Research Fellow, Ohio State Univ., 1981–82. Lecturer in Botany and Curator of the Moss Herbarium, Witwatersrand Univ. from Oct. 1982. Mainly interested in biosystematics of Compositae and plant reproductive biology.

Specimens c. 300, from Cape Province, Natal, Witwatersrand area and Savuti (northern Botswana); in J.

* **McClean, Alan Percy Douglas** (1902–)

Dr McClean was transferred to the Durban Botanic Station in 1926 but was placed in charge in 1928 when the then Officer in Charge, Dr H.H. Storey, left for the Amani Research Station in Tanganyika.

Ref.: Schrire in *Bothalia* 14: 232 (1983).

McDonald, David Jury (1956–)

b. Florida, Transvaal, 7 Aug. 1956; ecologist; ed. Natal Univ., Pietermaritzburg, graduating B.Sc. in 1977, B.Sc. (Hons) in 1978 and M.Sc. (Univ. of Cape Town) in 1983. Appointed in 1981 to Botanical Research Unit, BRI, Stellenbosch, and studying phytosociology of mountain fynbos vegetation. Fig. 11.

Specimens c. 900, from northern Natal, Richtersveld and south-western Cape; mainly in STE.

* **Maguire, Brian** (1922–83)

d. Johannesburg, 17 Aug. 1983.

Ref.: Davidson in *Forum Botanicum* 21: 88 (1983).

Marais, Elizabeth Maria (1945–)

b. Moorreesburg, C.P., 16 Oct. 1945; botanist; ed. Stellenbosch Univ. 1964–67, 1976–81, graduating M.Sc. Lecturer in Botany at Akademie vir Tersiëre Onderwys, Windhoek, 1981–83 and from 1983 Lecturer at Univ. of Stellenbosch.

Specimens c. 100, from south-west Cape, in STE-U.

* **Markötter, Erika Irene** (1906–83)

b. Bethel, E. Cape, 21 Feb. 1906; d. Kuilsrivier, C.P., 22 Sept. 1983 (pers. comm. from Mr R.O. Moffett, Bellville, 1984).

* **Meebold, Alfred** (1863–1952)

b. Heidenheim, Württemberg, Germany, 24 Sept. 1863; d. Havelock North, New Zealand, 6 Jan. 1952; traveller and collector; travelled to India, Ceylon and Burma from 1904–1912, collecting 18 000 numbers; to United States, Pacific Islands, Australia and New Zealand in 1928–30 and 1932–33, visiting Natal, Cape Province, Transvaal and Rhodesia in 1933, during which period a further 10 000 numbers were added. He maintained a private botanic garden on his property in Heidenheim.

Commemorated in genus *Meeboldia* Pax & Hoffm. (India).

Specimens in M, dupl. in HBG, NY etc.; some in PRE.

Ref.: Pax & Hoffman in *Pflanzenfam.* 17b: 187 (1936); Suessenguth in *Boissiera* 7: 21 (1943); IH 2, 4: 521 (1976); Mr. R. O. Moffett, pers. comm. 1983.

Meyer, Helmut Ernst (1908–)

b. Kommagas, C.P., 8 Nov. 1908; horticulturalist; son of Rev. L. G. Meyer (q.v.). Appointed as assistant to A. G. S. Herre (q.v.) 1930, under whom he received 3 years training as horticulturalist. Additional training, with emphasis on care of succulent plants, in Germany at Tübingen (1933–1935), Hohenheim at Stuttgart (1935–1936), and München (1937). Returned to Stellenbosch in 1938 where he worked as horticulturalist in the botanic garden of the University until his retirement in 1973. Undertook collecting trips to Namaqualand together with Herre, under whose name the specimens were catalogued. Most of the specimens thus collected are no longer in existence. In his spare time grew *Disa uniflora* in his backyard greenhouse, where he produced numerous spectacular selections and hybrids. Fig. 12.

Commemorated in *Conophytum helmutii* Lavis, *Lithops helmutii* L. Bol.

Ref.: pers. comm. from Dr P. Vorster, Stellenbosch, July 1984.



FIG. 12. Back: H. E. Meyer, Luisa Meyer jr.
Seated: Rev. L. G. Meyer, Mrs Luisa Meyer
Front: Werner Meyer

Meyer, Louis Gottlieb (1867–1958)

b. Near Kleine Marpe, Dettmold, Germany, 16 Oct. 1867; d. Stellenbosch, Sept. 1958; missionary; initially trained as agriculturalist; arrived in South Africa as missionary on 7 Nov. 1894 to practise in Namaqualand, firstly at Kommagas and later at Steinkopf, which also included the Richtersveld. Interested in natural history, especially plants, since childhood, his mission station became headquarters to Marloth on the latter's visits to Namaqualand, and they sometimes collected together. Meyer also sent plants collected on his own to Marloth and to Herre (q.v.), and insects to Dr H. K. C. Andreae (q.v.) which are at present housed in the South African Museum. Interned at Pietermaritzburg for a time during World War I. After his retirement he settled in Stellenbosch, where he died and was buried. Fig. 12.

Commemorated in the genus *Meyerophytum* Schwant. and in *Aloe meyeri* Van Jaarsveld, *Anacampseros meyeri* v. Poelln., *Cheiridopsis meyeri* N.E. Br., *Conophytum meyeri* N.E. Br., *Euphorbia meyeri* Nel, *Herreanthus meyeri* Schwant., *Lithops meyeri* L. Bol., *Meyerophytum meyeri* (Schwant.) Schwant., *Nelia meyeri* Schwant., *Ruschia meyeri* Schwant., *Stomatium meyeri* L. Bol.

Specimens from Namaqualand in STE (Tölken, 1971); BOL, PRE.

Ref.: pers. comm. from Dr P. Vorster, Stellenbosch, July 1984.

Meyer, Luise (née Olpp) (1873–1956)

b. Gibeon, SWA, 1 June 1873; d. Stellenbosch, 1956; daughter of Johannes Olpp (b. 5 July 1837) who was one of the pioneer missionaries who landed at Angra Pequena (Lüderitz) in 1868; wife of Rev. L. G. Meyer (q.v.) whom she often accompanied on collecting trips. Fig. 12.

Commemorated in *Conophytum meyeriae* Schwant., *Ruschia meyeriae* Schwant. Both type plants were attributed to Rev. G. Meyer.

Ref.: pers. comm. from Dr P. Vorster, Stellenbosch, July 1984.

Meyer, Luise (1905–)

b. Kommagas, C.P., 1905; daughter of Rev. L. G. Meyer (q.v.) and Luise Meyer (q.v.); she sometimes accompanied her parents on collecting trips. Currently (1984) living in Stellenbosch. Fig. 12.

Commemorated in *Conophytum luisae* Schwant.

Ref.: pers. comm. from Dr P. Vorster, Stellenbosch, July 1984.

*** Moffett, Rodney Oliver (1937–)**

Is revising *Rhus* for the Flora of Southern Africa. Specimens c. 3 600, mainly *Rhus* from all over South Africa. Fig. 13.

*** Morris, D.G.: see Mrs Grace Doreen Court.**

FIG. 13. R. O. Moffett

Florence N. Morris

Morris, Florence Nightingale (née Seller) (1897–)

b. Cradock, C.P., 25 May 1897; housewife and plant lover; daughter of Rudolf Seller who was park curator in Cradock; mother of Mrs Grace Doreen Court (q.v.). Talented in music, she obtained Licentiate (Trinity College, London) in both piano and singing by the age of 18. After her marriage to Gilbert Morris they settled in Oudtshoorn until 1942 and became keenly interested in succulent plants, especially Haworthias. She carried on an active correspondence and exchange with Grace Britten in Grahamstown, F. R. Long in Port Elizabeth and W. Triebner in Windhoek. *Haworthia morrisiae* V. Poelln. is named after her. Fig. 13.

Mücke, M. (fl. 1910)

Collected about 100 specimens between Walvis Bay and Windhoek in 1910 and then collected more extensively in East Africa.

Ref.: Strey, MS (1961).

Netshiungani, Eric N. (1952–)

b. Mauluma, Dzanani Distr., Venda, 1952; forester; ed. Fort Cox College, Ciskei, obtaining the diploma in Forestry. Appointed as a forester in Venda Dept of Agric. and Forestry in 1977 and transferred to Venda Herbarium, Tate Vondo, in June 1978 as assistant to G. Hemm; later curator of the herbarium. Specimens in Tate Vondo herbarium, PRE, PRU.

Nicholas, Ashley (1954–)

b. Chingola, Zambia, 15 Aug. 1954; botanist; ed. Natal Univ. Pietermaritzburg, graduating B.Sc. in 1976; B.Sc. (Hons) in 1979; M.Sc. in 1982. Appointed in 1981 as Curator of the Donald Killick Herbarium, Dept of Forestry, Natal (CPF). Interested in Droseraceae and Asclepiadaceae in addition to forest flora.

Collected c. 1 900 specimens in South Africa, mainly Natal, in CPF, NH, NU, PRE, K, MO; c. 500 in Zimbabwe, in SRGH.

Nichols, Geoffrey Richard (1953–)

b. Nairobi, Kenya, 22 Oct. 1953; horticulturalist; obtained Diploma in Agriculture, Cedara, 1974; National Diploma in Horticulture, Durban, 1977; National Diploma in Park and Recreation Admin. 1980. Horticultural scholar at Kirstenbosch, 1979. Since 1982 with the Durban Parks Dept. Fig. 14.

Specimens c. 650, collected mainly in Natal; in NH, NBG.



FIG. 14. G. R. Nichols

C. G. Osbeck

Nilsson, Eva Birgitta Maria (1955–)

b. Boras, Sweden, 3 Sept. 1955; botanist; ed. Stockholm Univ. 1977–80, graduating B.Sc. At Kirstenbosch Sept. 1980 to Feb. 1981 studying *Wachendorfia*.

Specimens c. 200; in S, NBG.

* **Oates, Lawrence Grace** (1943–)

b. Cape Town, 13 March 1943; nature conservationist; great-grand nephew of the naturalist-collector Frank Oates (q.v. Gunn & Codd 1981) and grand nephew of Capt. Oates of Scott's Antarctic Expedition; ed. Stellenbosch Univ. 1962–66, graduating B.Sc. (Agric.), and Pretoria Univ. 1967, B.Sc. (Hons) (Wildlife Management). Agricultural Extension Officer, Dundee, 1968–69; joined Division of Nature Conservation, Transvaal, in 1969 and engaged on an ecological study of the Hans Merensky Nature Reserve, 1969–71; officer in charge of S.A. Lombard Nature Reserve, 1971–73; Regional Representative (Management) from 1973, concerned mainly with the balanced management of nature reserves in western Transvaal.

Specimens c. 1 000, collected mainly on the Hans Merensky Nature Reserve, Letaba District, Transvaal; in PRE and in a local herbarium in the Reserve.

Ornduff, Robert (1932–)

b. Portland, Oregon, USA, 13 June 1932; botanist; ed. Reed College, Univ. of Washington, and Univ. of California (Berkeley), 1949–61 graduating A.B., M.Sc., Ph.D. On faculties of Reed College, Duke University and, from 1963, Univ. of California, Berkeley. Director of the University Herbarium and Jepson Herbarium, 1968–83, University Botanical Garden from 1973, and Professor from 1969. Interested in reproductive biology, phytogeography and chemosystematics, and specialist in reproductive systems of heterostylous Cape plants. Publications on heterostyly in South African plants (review); cytotaxonomy of *Villarsia*, *Lachenalia*, *Cyanella*, *Haemodoraceae*; reproductive systems of *Wachendorfia*, *Cyanella*, *Nivenia*; taxonomy of *Oxalis*.

Visited South Africa in 1970–71, 1974 and 1981 and collected c. 800 specimens as well as living plants for the University of California Botanical Garden, Berkeley, from the south-western Cape; in UC.

* **Örtendahl (Oertendahl), Ivar Anders** (1870–1935)

Further ref.: Norlindh in *Veld & Flora* 70: 46 (1984), with portrait.

* **Osbeck, Carl Gustaf** (1766–1841)

Portrait kindly provided by Mr Bo Peterson, Göteborg and published with acknowledgement to the Nordiska Museet, Stockholm. Fig. 14.

Ottley, Alice Mario (1882–1971)

b. Seneca Castle, New York, 20 Nov. 1882; d. Chula Vista, California, 22 July 1971; botanist; A.B. (Cornell Univ.) 1904; M.A. (Wellesley College) 1906; Ph.D. (Univ. of California) 1921. Assistant and instructor in the Botany Department, Wellesley College, 1907–19; Associate Professor 1922–34 and full Professor from 1934 until her resignation in 1939. In 1925 she was Exchange Professor at Witwatersrand Univ. and collected about 600 specimens in Transvaal and Mozambique, often together with Margaret Moss, who was a contemporary of hers at Wellesley College, and with R. G. N. Young.

Specimens in WELC. Also collected in the USA.

Ref.: *IH* 2.5: 630 (1983); comm. from Wellesley College, Feb. 1984.

* **Otzen, Max** (?–c.1947)

b. in Schleswig-Holstein and came to South Africa in the 1880's. Moved to South West Africa/Namibia when the diamond boom was on and was later appointed to the board of directors of Consolidated Diamond Mines. Retired to Cape Town where he maintained an extensive collection of succulent plants. See also Gunn & Codd (1981).

Ref.: Krueger in *Veld & Flora* 68: 87 (1982), who took some of the photographs of Euphorbias published in White, Dyer & Sloane, *The Succulent Euphorbieae*, Pasadena 1941.

* **Owen-Smith, Norman** (1942–)

b. Durban, Natal, 10 Jan. 1942; ecologist; ed. Natal Univ. and Univ. of Wisconsin, graduating M.Sc. and later Ph.D. for a study on behavioural ecology of the white rhinoceros. Lecturer, University of Rhodesia (now Zimbabwe), 1975–78; research ecologist in Centre for Resource Ecology, Witwatersrand Univ. from 1979, currently studying interrelations between vegetation and large herbivores.

Specimens c. 200, in NPB (Tölken, 1971).

Palmer, Antony Riordan (1954–)

b. Springs, Transvaal, 8 Aug. 1954; ecologist and computer botanist; ed. Univ. of Natal, Durban. 1973–76, graduating B.Sc. (Hons); Rhodes Univ. 1979–81, M.Sc. with a thesis dealing with the vegetation of the Andries Vosloo Kudu Reserve. Appointed to Cape Dept of Nature and Environmental Conservation from 1979. Interested in floristics of conservation areas in semi-arid parts of the Cape and the interpretation of satellite imagery for mapping and monitoring vegetation. Fig. 15.

Specimens c. 1 200, mainly from Great Fish River Valley and the mountains near Graaff-Reinet; in GRA, PRE.

* **Papenfuss, George Frederik** (1903–81)

d. Berkeley, California, 8 Dec. 1981.

Ref.: *Forum Botanicum* 20: 33 (1982); *Taxon* 31: 613–615 (1982).



FIG. 15. A. R. Palmer

C. P. Peeters

Paterson, M. (fl. 1926)

Specimens in MO (orig.). BR (IH 2.5: 651, 1983). According to Dr Peter Goldblatt, Curator of African Botany, MO (pers. comm.), this is a relatively small collection of c. 70 specimens acquired with the herbarium of Adele Grant (q.v. Gunn & Codd, 1981). The specimens were collected mainly in the Hermanus area in 1926 and 1927.

Peeters, Christian Paul (1956–)

b. Brussels, Belgium, 30 April 1956; took up residence in Johannesburg in 1971; entomologist; ed. Witwatersrand Univ. graduating B.Sc. (Botany and Zoology) in 1978, B.Sc. (Hons) (Zoology) in 1979. At present part-time lecturer engaged on post-graduate study in entomology at Witwatersrand Univ. Fig. 15.

Undertook a survey of Bophuthatswana with two of his fellow-students, Gericke (q.v.) and Burelli (q.v.), and collected c. 900 specimens; in J. BOL. PRE and in a collection maintained in Mafikeng.

*** Penfold, Oliver Crace (c. 1875–1954)**

A dentist by profession who grew up in England and qualified L.D.S. and R.C.S. in London in 1898. Came to South Africa in 1900 and registered with the S.A. Medical and Dental Council on 1 Oct. 1900. Practised in Cape Town until his retirement in 1940 and died on 16 September 1954. At first he collected moths but soon turned his attention to plants and was friendly with Dr G. J. Lewis, Prof. R. H. Compton, Miss W. F. Barker and Capt. T. M. Salter. He was a member of the Botanical Society of S. Africa from 1919. His wife ran the tea-room at Kirstenbosch for a number of years until into the 1940's.

Specimens in NBG, SAM.

Ref.: pers. comm. from Mr C. D. C. Dickson, Cape Town; from his stepdaughter, Mrs D. E. Clark, Durban; and from the Registrar, S.A. Medical and Dental Council, Pretoria; Codd & Gunn in *Veld & Flora* 70: 67 (1984).

Perold, Sarie Magdalena (née Lombard) (1928–)

b. Johannesburg, 19 May 1928; research technician; ed. Witwatersrand Univ. 1946–49, graduating B.Sc. in anatomy and histology; Pretoria Univ. 1977–78 (2nd year courses in botany and zoology). Worked in S.A. Inst. Medical Res. as technician. 1950–52; with a private firm of pathologists. 1952–56; scientific assistant (chemical pathology) in Witwatersrand Univ. Medical Faculty, 1956–67; from 1979 research technician, BRI, responsible for electron microscopy and studies in Hepaticae (genus *Riccia*). Married to J. M. Perold in 1953. Fig. 16.

460 specimens (*Riccia*), mainly from Transvaal, in PRE.

Peter, Gustav Albert (1853–1937)

b. Gumbinnen, east Prussia (now in USSR), 21 Aug. 1853; died Göttingen, Germany, 4 Oct. 1937; botanist; ed. Königsberg Univ. 1870–74. After graduating with a doctorate, he was appointed at



FIG. 16. Mrs S. M. Perold

G. A. Peter

München Univ. where he and Prof. Nageli worked on the genus *Hieracium*. From 1888 to 1923 he was Professor of Botany at Göttingen Univ. and, although he did not publish a great deal, he built up the botanic garden and was interested in comparative anatomy and cryptogams. In 1891–93 he contributed the Convolvulaceae, Polemoniaceae and Hydrophyllaceae for Engler & Prantl's *Natürl. Pflanzenfam.* In 1903 he travelled extensively in Europe and in 1907 embarked on a two year world-wide tour.

In July 1913 he left on an extended collecting tour in Africa which lasted until Feb. 1919. In S.W. Africa/Namibia from 20 Aug.—17 Oct. 1913, he collected 540 numbers, travelling from Swakopmund – Okahandja – Tsumeb – Waterberg – Windhoek – Keetmanshoop and Fish River – Luderitz. In South Africa from 24 Oct.—29 Nov. 1913, he collected about 1 000 numbers, in Cape Town (where he met Dr Marloth), the Peninsula – George – Knysna – Avontuur – Port Elizabeth – Graaff-Reinet – Pretoria. He then proceeded to Bulawayo – Victoria Falls – Harare – Umtali – Beira and the Mozambique coast. The rest of the time was spent in Tanzania but unfortunately much of his material remained behind in Dar-es-Salaam when he left and had to be destroyed because of insect infestation. A second journey to Africa was made in 1925–26 during which he collected 75 numbers in S.W. Africa/Namibia (Swakopmund and Walvis Bay) from 7–11 Aug. 1925, and 310 numbers in South Africa (Cape Town and coastal ports) from 14–24 Aug., followed by further extensive collecting in Tanzania. His studies were presented in his 'Flora von Deutsch-Ostafrika' in *Feddes Reprium* Beih. 40, Part 1 (1929–38) and 40, Part 2 (1932–38). Fig. 16.

Apparently the specimens were numbered after his return to Germany but he died before the numbering was complete. His herbarium of about 50 000 numbers was acquired by Berlin-Dahlem in 1936. The numbering was continued in B, starting with No. 50001, but not in chronological order because the material had been sorted into families in the meantime. Duplicates are in BR, GOET. K, MO, WAG and possibly W.

Ref.: *Notizbl. Bot. Gart. Mus. Berl.* 13: 166 (1936); Schmucker in *Ber. dt. bot. Ges.* 56: (203) (1938), with portr. reproduced herewith; Exell &

Hayes in *Kirkia* 6: 85 (1967); personal communications in 1983 from Prof. P. Hiepko, Berlin-Dahlem, and Mr R. O. Moffett of Bellville, C.P.

* **Pfeil, Joachim Friedrich Graf von** (1857–1924)

Full title as given in *Index Herbariorum* (Collectors) 2.5: 677 (1983).

Pienaar, Barendina ("Barnie") Jacoba (née De Villiers) (1926–)

b. Somerset East, C.P., 26 Sept. 1926; botanical technician; ed. Natal Univ., Pietermaritzburg, 1944–47, graduating B.Sc., U.E.D.; Pretoria Univ. 1982–83, B.Sc. (Hons.); presently studying South African *Vigna* spp. for M.Sc. Taught geography at Newcastle school 1948–52; temp. lecturer (geography), Pretoria Onderwyskollege 1956 and at Univ. College of Zululand 1960; Herbarium technician, Univ. College of Zululand, 1963–66; Natal Herbarium, Durban, 1979–81; National Herbarium, BRI, from 1981. Married Dr Benjamin Pienaar (1923–81), educationist, in 1949.

Specimens c. 50 leg. De Villiers in NU; c. 670 leg. Pienaar in ZULU (50), NH, PRE, incl. about 360 cultivated plants collected in Durban.

Radloff, Ellen Miranda (?–1982)

b. Kimberley, date ?; d. Kimberley, 6 July 1982; physiologist; ed. Huguenot Univ. College, Wellington, obtaining the Diploma in Domestic Science and B.Sc. Awarded the Abe Bailey Travelling Scholarship and took courses in nutrition, pathology and public health at Cambridge Univ. and Bedford College, London, obtaining the M.Sc. degree. With the award of a Stirling Research Scholarship she attended Yale Univ. for three years doing research in respiration and circulation for which she received the Ph.D. degree. Returning to S. Africa she lectured in the Physiology Dept of the Medical School, Witwatersrand Univ. 1936–43. At the request of Fort Hare Univ. she established the Physiology Dept and served as Professor until 1946 when she returned to her home, Sekretarius Farm near Kimberley.

She collected specimens near Kimberley; in KMG.

Ref.: pers. comm. from Mr A. Gubb, KMG.

Raitt, Lincoln Miles (1948–)

b. Somerset West, C.P., 7 June 1948; plant ecophysicist; ed. Helderberg College, B.Sc. (S.A.) in 1970, B.Sc. (Hons) (Stell.) in 1971, M.Sc. (Stell.) in 1974. Technical Officer in the Botany Dept, Univ. of Stellenbosch, 1971–80; from 1980 Lecturer, Univ. of Western Cape. Research interest in ecophysiology and reproduction.

Specimens c. 800, mainly S.W. Cape; in STE, UWC.

* **Rehmann, Anton** (1840–1917)

Further ref.: Codd & Gunn in *Bothalia* 14: 1–14 (1982), with portrait. Dr Christian Puff kindly searched through the collection in W for types of species described by Szyszylowicz, but found none except *Greyia radlkoferi* Szyszyl.

Prof. Dr Kornás of the Jagiellonian Univ. Kraków, Poland, informs us (March 1984) that Rehmann wrote two books, in Polish, on his travels in South Africa in 1875–77 and 1879–80, in which information on his itineraries is recorded.

Reid, Clare (1955–)

b. Johannesburg, 20 Aug. 1955; botanist; ed. Natal Univ., Pietermaritzburg, 1973–77, graduating B.Sc. (1976), Hons (1977). Appointed to National Herbarium, BRI, in 1979, and concerned mainly with Cyperaceae and petaloid monocots, especially *Cyrtanthus*. Fig. 17.

Specimens c. 800, together with several hundred collected jointly with other staff members, in various parts of South Africa and S.W. Africa/Namibia; in PRE.

* **Renny, Alexander Timbrell** (1903–83)

d. Tzaneen, Transvaal, 28 June 1983.

Riley, Herbert Parkes (1904–)

b. Brooklyn, New York, 28 June 1904; cytogeneticist; ed. Princeton Univ. graduating A.B. (1925), A.M. (1929), Ph.D. (1931); Hon. D.Sc., Univ. of Kentucky, 1976. National Research Council Fellow, Harvard Univ. 1932–34; Asst Professor, Tulane Univ. 1934–38; Univ. of Washington (Seattle) 1938–42; at Univ. of Kentucky as Professor, 1942–56, Distinguished Professor, 1956–74 (Head of Department, 1942–65), and, since his retirement in 1974, Distinguished Professor Emeritus. As Fullbright Lecturer at Pretoria Univ. Aug. – Dec. 1955 and at Cape Town Univ. Dec. 1955 – May 1956. Publications include *Families of Flowering Plants of Southern Africa*, Univ. of Kentucky Press, 1963, and *The Aloineae, A Biosystematic Survey* (with S. K. Majumdar), Univ. of Kentucky Press, 1979.

Specimens collected in S. Africa in PRU, MEM; also collected in USA.

Ref.: IH 2.5: 762 (1983).

Ringgold & Rodgers

Commanders in the United States North Pacific Surveying Expedition (1853–56), comprising five well-equipped ships. Leaving Norfolk, Virginia, in June 1853, they spent seven weeks in Simon's Bay undergoing repairs and refitting. A substantial col-



FIG. 17. Claire Reid

Max Schlechter

lection was made by the naturalist, Charles Wright (q.v.) and to lesser extent, assistant naturalist, A.H. Ames (q.v.). Some specimens are in PH, leg. Ringgold & Rodgers.

Ref.: Mears in *Proc. Acad. nat. Sci. Philadelphia* 133: 155 (1981) and pers. comm. April 1983.

* **Robertson, Colin Charles** (?–1946)

A Yale graduate, appointed in 1913 as head of the Research Section, Dept of Forestry, Pretoria.

Specimens in A. PRF.

Ref.: Immelman, Wicht & Ackerman, *Our green heritage*, Cape Town 1973; IH 2,5: 768 (1983).

Roux, Cecilia (1947–)

b. Pretoria, 31 Dec. 1947; mycologist; ed. Pretoria Univ., graduating B.Sc. in 1967 and B.Sc. (Hons) in 1974, and Rand Afrikaans Univ., M.Sc. in 1978. Appointed as taxonomic mycologist in Plant Protection Research Institute, Pretoria, from 1975.

Specimens c. 120, chiefly mycotoxic samples collected in the Karoo, also some collections in S.W. Africa and Mozambique; in PREM.

* **Roux, C.H.D.** (*fl.* 1935)

Lived in the Victoria West-Carnarvon area and collected plants, especially mesems, for Mrs L. Bolus.

Commemorated in *Pleiospilos rouxii* L. Bol., *Rhinophyllum rouxii* L. Bol., *Stomatium rouxii* L. Bol.

Specimens in BOL.

Ref.: pers. comm. from Mrs O'Connor-Fenton, Bolus Herbarium.

Royle, John Forbes (1798–1858)

b. Cawnpore, India, 20 May 1798; d. Acton, England, 2 Jan. 1858.

Surgeon in East India Co. A keen naturalist, he was Curator of the Saharunpur Botanic Garden, Punjab, 1823–31, in addition to his medical duties. Professor of Materia Medica, King's College, London, 1837–56 and Secretary of Horticultural Society of London, 1837–58.

Collected some plants at the Cape, no doubt during voyages to India; also collected in India, Chile and elsewhere; specimens in LIV, K, PH and elsewhere (see also IH 2,5: 794, 1983).

Ref.: *Taxon* 5: 11 (1956); Desmond, *Dictionary of British and Irish Botanists and Horticulturalists*, London 1977; Mears in *Proc. Acad. Nat. Sci. Philadelphia* 133: 155 (1981) and pers. comm.

* **Russell, G.E. (née Gibbs)**: see Gibbs Russell, G.E.

* **Schirach, M.C.**: see Heginbotham, M.C.

* **Schlechter, Max** (1874–1960)

Photograph provided by Dr P. Vorster and published with acknowledgement to Mr H. E. Meyer, Stellenbosch. Fig. 17.

* **Schmitz, Marthe Odile (née Ruch)** (1935–82)

b. Strasbourg, France, 27 Nov. 1935; d. Maseru, Lesotho, 1 April 1982; teacher and missionary; ed. Strasbourg Univ., graduating Lic. Sc. Nat. in 1958. Came to Lesotho in 1958 as Lecturer in Botany at the University College of Lesotho, Roma, where she gave courses in plant systematics, anatomy, ecology and genetics, and was in charge of the herbarium. She was acting head of the Department in 1960 and 1965. In 1962 she married Dr Gerhard Schmitz who became Professor of Geography at Roma. In 1965 she gave up her post as lecturer but continued with her studies, and had just completed a guide to the flowers of Lesotho at the time of her death due to injuries sustained in a motor accident.

Ref.: Talukdar in *Forum Botanicum* 20: 33–35 (1982).

Schrire, Brian David (1953–)

b. Johannesburg, 20 Oct. 1953; botanist; ed. Univ. of Witwatersrand 1972–1977, graduating B.Sc. (Hons); studying Desmodiaceae for M.Sc. at Univ. of Durban Westville. Appointed to National Herbarium, Pretoria, 1978 and from Aug. 1979 in charge of the Durban Unit and Curator of the Natal Herbarium. Fig. 18.

Specimens c. 1 500, mainly from eastern Transvaal and Natal; in NH (mainly), PRE.

* **Seydel, Richard Heinrich Wilhelm** (1885–1972)

d. Usakos, S.W. Africa/Namibia, 10 June 1972.

Specimens c. 2 000 in B, purchased between 1954 and 1967; dupl. in A, C, K, LD, MO, NY, PRE, SRGH, US, WAG etc.

Ref.: pers. comm. from Prof. Hiepko, Berlin, May 1983.

Skarpe, Christina (1946–)

b. Sweden, 23 March 1946; ecologist; ed. Uppsala Univ. from 1966, graduating M.Sc. Appointed as researcher in Institute of Ecological Botany, Uppsala, studying interactions between large herbivores and plants, with particular reference to the Kalahari and Zimbabwe.

Specimens c. 450, from the Kalahari, in UPS, K, PRE etc.

* **Skead, David Michael** (1937–1983)

b. Grahamstown, Cape, 24 Oct. 1937; d. near Viljoenskroon in northern OFS in an airplane crash while on survey work, 16 Oct. 1983; ornithologist; ed. Natal Univ., Pietermaritzburg, graduating M.Sc. in 1977 and D.Sc. (Potchefstroom University) in 1980. Worked as Ranger with the Natal Parks, Game and Fish Preservation Board, mainly at Giants Castle and Hluhluwe 1956–61; with the Divisional Council of the Cape, at Rondevlei Bird Sanctuary and Cape of Good Hope Nature Reserve 1962–64; with Transvaal Nature Conservation Division since July 1964 and officer in charge of the Barberspan Ornithological Research Station since 1971.

Assisted C. J. Ward with maintenance of the herbarium at Hluhluwe in 1958 and has collected in the Giants Castle and Barberspan areas, mainly in connection with ornithological studies, with special reference to the Yellow-billed Duck.

Specimens c. 700; in NU, PRE.

Ref.: Oatley in *African Wildlife* 37: 180 (1984).



FIG. 18. B. D. Schrire

Deidre Snijman

Snijman, Deidre Anne (1949–)

b. Brakpan, Transvaal, 27 June 1949; botanist; ed. Natal Univ., Pietermaritzburg, 1967–72, graduating M.Sc. with a thesis dealing with aspects of growth and differentiation of *Nicotiana tabacum* callus, and U.E.D. Taught for a year in Natal and, from 1974, Professional Officer in the Compton Herbarium, Kirstenbosch; mainly interested in the autumn-flowering bulbs of the winter rainfall region, especially Amaryllidaceae, and has published a revision of the genus *Haemanthus*. Fig. 18.

Specimens c. 750, mainly S.W. Cape; in NBG.

Stadler, Anne-Marie (1960–)

b. Pretoria, Transvaal, 14 July 1960; botanical technician; ed. Pretoria Univ., graduating B.Sc. in 1982. Appointed to Botanical Survey Section, BRI, Jan. 1983.

Specimens c. 150 from northern coastal Natal; in PRE.

Stapleton, Clarence Cowper (1892–1974)

b. Ladismith, Cape, 19 March 1892; d. 28 Oct. 1974; forester; ed. at Diocesan College, Cape Town, and after serving in World War I with the rank of Lieut. in the S.A. Artillery, attended Edinburgh Univ. 1920–22, obtaining the degree of B.Sc. (Forestry). Appointed to the Dept of Forestry Sept. 1922 and was stationed at various centres: Transkei 1922–23, Knysna to 1929, Pietersburg to 1934, Bloemfontein to 1939, Port Elizabeth to 1944, retiring as Conservator of Forests, King William's Town, Sept. 1948.

Wrote *Common Transvaal Trees* (Dept Agr. & For. Bull. 164, 1937) and *Trees of the Knysna — George Natural Forests* (Knysna Publicity Assoc. 1949). Specimens in PRF.

*** Stohr (originally Stöhr or Stoehr), Frederick Otto (1871–1946)**

b. Brighton, England, 1 Dec. 1871; d. Cape Town, 7 April 1946; medical practitioner; graduated M.A. (classics) at Oxford Univ. and in medicine at Guy's Hospital, London. Came to S. Africa in 1900 with the R.A.M.C. during the Anglo-Boer War and started collecting birds for the S.A. Museum. Took part, as medical officer, in the expedition which surveyed the border between the Congo and N. Rhodesia in the early years of the century and did research on the tsetse fly for the Belgian government. About this time he acquired a farm at Munshiweba, in central Zambia, to which he returned periodically, though practising as a psychiatrist in Johannesburg. Married the well-known pianist, Elsie Hall, in London on 22 Nov. 1913.

Always a keen ornithologist, he also collected some plants at Munshiweba, Zambia, and a few in the Transvaal in 1942. Specimens in PRE (Exell & Haines in *Kirkia* 6: 102, 1967) and SAM (Tölken, 1971).

Ref.: pers. comm. from his son, Dr P.S. Stohr of Cape Town, June 1981.

Swart, Jan Philippus Jakobus (1950–)

b. Bredasdorp, C.P., 24 May 1950; wood anatomist; ed. Stellenbosch Univ. 1971–74, graduating B.Sc. (For.) and B.Sc. (Hons) in 1976. Appointed to the Wood Anatomy Section of the Faculty of Forestry, Stellenbosch Univ. Fig. 19.

Specimens collected in S.W. Cape; in PRE.

*** Theron, Johannes Jacobus (1905–1980)**

d. Pretoria, 27 Aug. 1980 (pers. comm. from Dr L.A. Coetzer, Pretoria Univ., Aug. 1984).

*** Thienel, Sister O. (fl. 1944)**

Roman Catholic Sister from Mariannhill who studied at Natal Univ., Pietermaritzburg, during World War II and made a collection while a student. Specimens in NU (pers. comm. from Dr K.D. Gordon-Gray, Sept. 1982).

Thompson, Louis Clifford (1920–)

b. Haenertsburg, Transvaal, 29 Feb. 1920; farmer, near Magoebaskloof. Was Flight Sergeant in the R.A.F. and piloted torpedo bombers during World War II. A keen naturalist, he has explored many little known desert areas and mountain regions of southern Africa and occasionally collects unusual specimens or plants of horticultural interest for his sister, Sheila (q.v.).

Collaborated in an interesting collection of over 100 specimens in the Baynes Mts, S.W. Africa/Namibia, in July 1959, leg. Davies, Thompson & Miller, in PRE.

*** Thompson, Mary Fraser (later Mrs Rand) (1941–82)**

d. Cape Town 10 Dec. 1982 (Oliver in *Forum Botanicum* 21: 1, 1983; and in *Veld & Flora* 69: 30, 1983.)

* **Thompson, Sheila Clifford** (1917–)

b. Haenertsburg, Transvaal, 23 April 1917; nurseryman-farmer; daughter of Dr Thompson of Magoebaskloof; ed. Witwatersrand Univ., graduating B.Sc. (Hons). She maintains a nursery near Magoebaskloof in which she grows many indigenous plants, including unusual species which she has collected herself in eastern Transvaal, Zimbabwe and the Cape.

Some specimens in J, PRE.

* **Tosh, Patricia A.** (later Mrs **Mulder**) (fl. 1950)

Studied at Natal Univ., Pietermaritzburg, in the mid 1950's and collected plants near her home at Nibela Store and on the Nibela Peninsula (northern end of Lake St Lucia).

Specimens in NU (pers. comm. from Dr K.D. Gordon-Gray, Sept. 1982).

Tredgold, Edith Kathleen (later Mrs **Macintosh**) (1900–)

b. Cape Town, 22 Feb. 1900; housewife, social worker and museum technician; ed. Cape Town University 1918–23, graduating M.A. (Botany). Demonstrator in Botany Dept 1922–23; in 1927 married J.C. Macintosh, Advocate, and settled in Grahamstown until her husband's death in 1943. Social Worker 1944–53 and Technician in Geology Dept, South African Museum, 1954–65. Published 'A guide to the rocks, minerals and gemstones of Southern Africa,' 1976.

Made a small collection of plant specimens in south-western Cape during an expedition from Ashton to Hex River in 1922; in SAM.

Ref.: George & Dorothy Randall, *We All Lived Here*, Queenstown 1977.

Tsuane, William (fl. 1928–68)

Assistant at Albany Museum Herbarium, Grahamstown, where he was appointed in 1928 as messenger and gardener. Retired Nov. 1976. His duties included maintaining the display of wild flowers in the entrance to the Museum.

Made some herbarium specimens, e.g. the rare *Iboza barberae* N.E. Br., in GRA.

Turner, Beverley Joy (1960–)

b. Pretoria, 2 Nov. 1960; ecologist; ed. Natal Univ., Pietermaritzburg, graduating B.Sc. in 1981, B.Sc. (Hons) in 1982. Appointed to the Botanical Survey Section of the BRI and engaged on ecological studies in eastern Transvaal.

C. 200 specimens; in PRE.

* **Van Dam, Gerhardus Petrus Frederick** (?–1927)

Appointed as Lay Assistant in the Lower Vertebrates Department, Transvaal Museum, Pretoria, May 1908, and died in a motor accident in Pretoria in 1927.

Made collections of various kinds for the Museum while on field excursions, including 645 plant speci-

mens, now in PRE (ex Transvaal Museum), many recorded jointly with more senior staff members, e.g. V. FitzSimons.

* **Van der Merwe, C.P.** (fl. 1908–38)

Entomologist in Dept of Agriculture from 1908. Was stationed in Durban from about 1914–27 and then in Pretoria until about 1938.

Specimens in PREM (Tölken, 1971).

Ref.: Schrire in *Bothalia* 14: 223 (1983).

Van Heerde, Pieter (1893–1979)

b. Cape Town, 30 April 1893; d. Springbok, Namaqualand, 15 May 1979; teacher and collector; ed. Univ. of Cape Town, graduating M.A. (chemistry) and with a teaching diploma. After lecturing at the University and at the General Louis Botha Training Ship, he taught at Wittedrif and Bredasdorp before accepting the post of headmaster of Springbok school in 1926, a post he held with distinction until his retirement in 1952.

He was interested in natural history and particularly in the succulent plants of Namaqualand, which he propagated in his private garden and later on the Hester Malan Nature Reserve, where he was employed from 1966 until his health failed in 1967. He was always helpful to visiting botanists and passed on his discoveries to specialists, especially to Dr Louisa Bolus and Hans Herre. The localities recorded were sometimes deliberately misleading in order to protect species in their natural habitat.

Commemorated in the genus *Vanheerdea* L. Bol., *Namaquanthus vanheerdei* L. Bol., *Conophyllum vanheerdei* L. Bol. and *Astridia vanheerdei* L. Bol.

Specimens in BOL.

Ref.: pers. comm. from Mr E.J. van Jaarsveld, Sept. 1983; Dr H. Glen, Dec. 1983; Mr C.D.C. Dickson, Cape Town, March 1984.



FIG. 19. J. P. J. Swart

J. van Rooy

* **Van Niekerk, Grace** (?–1983)

d. Somerset West, C.P., July 1983; teacher and botanical assistant. Gave up teaching to join the staff of the Bolus Herbarium during the 1950's and early 1960's and did some work on the genus *Aspalathus*. Returned to teaching for some years and again

worked at BOL for about two years in the early 1970's.

Specimens in BOL.

Ref.: pers. comm. from Mrs O'Connor-Fenton, Bolus Herbarium, Feb. 1984.

Van Rooy, Jacques (1953–)

b. Bloemfontein, OFS, 11 Oct. 1953; bryologist; ed. UNISA, graduating B.Sc. in 1982; Pretoria Univ., B.Sc. (Hons) in 1983. Appointed to the BRI as Technical Assistant, 1978; Asst Agr. Researcher from 1982, studying Archidiaceae, Bryaceae (Bryophyta). Fig. 19.

Specimens c. 2 000, collected mainly in eastern South Africa; in PRE (orig.), MO, NY, S, H.

Van Rooyen, Noel (1950–)

b. Nongoma, Natal, 25 Dec. 1950; ecologist; ed. Pretoria Univ., graduating B.Sc. (Agric.) in 1973, B.Sc. (Hons) in 1975 and M.Sc. in 1978. Lecturer in Botany Dept, Pretoria Univ., from 1978, mainly interested in classification of vegetation. Fig. 20.

Specimens c. 4 000, from Transvaal; in PRU, PRE.

Van Wyk, Christina Maria (1955–)

b. Stellenbosch, C.P., 20 April 1955; botanist; ed. Stellenbosch Univ. 1973–1980, graduating M.Sc. Appointed to the Herbarium, Botanical Research Unit, Stellenbosch, in 1980.

Specimens c. 1 000, from S. and S.W. Cape and Namaqualand; in STE.

* **Von Below, Irma Ina** (later Mrs Booysen) (1920–84)

d. Cape St Francis, C.P., 21 Jan. 1984.

Ref.: Oliver in *Veld & Flora* 70: 59–60 (1984).

* **Vorster, Pieter Johannes** (1945–)

D.Sc. awarded by Pretoria Univ. in 1979, not Ph.D. as previously recorded (Gunn & Codd, 1981).

* **Vorster, Thomas Butler** (1948–)

Date of birth should be 31 March 1948, not 1931 as previously recorded (Gunn & Codd, 1981).

* **Wager, Vincent Athelstan** (1904–)

Correction: Dr Wager was transferred to the Natal Region in 1946 and was stationed at the Natal Herbarium until his retirement in 1966.

Ref.: Schrire in *Bothalia* 14: 223 (1983).

* **Walters, Ian Basil** (1917–1983)

b. Worcester, C.P., 23 Oct. 1917; d. Worcester, 11 Jan. 1983; dental surgeon; ed. Witwatersrand Univ. 1935, Stellenbosch Univ. 1936 and Guy's Hospital, London, 1937–40, graduating L.D.S., R.C.S. Served as a bomber pilot and later as an instructor in the R.A.F. with the rank of Flight Lieutenant during World War II and then returned to practise in Worcester, C.P. Started collecting as a hobby in 1962 and

devoted most of his time to this occupation after being obliged to give up his practice in 1977 due to illness.

Collected mainly in western Cape, especially the upper Breede River Valley; specimens c. 2 500, in NBG, BOL, PRE.

Commemorated in *Lebeckia waltersii* Stirton.

Ref.: Rourke in *Veld & Flora* 69: 148–49 (1983).

Wanntorp, Hans-Erik (1940–)

b. Stockholm, Sweden, 8 May 1940; botanist; ed. Stockholm Univ. where he is at present Lecturer in Botany. Visited South West Africa/Namibia with his wife in 1980 and collected 1 159 numbers; in S, PRE.

Wanntorp, Henni (née Palson) (1943–)

b. Stockholm, Sweden, 15 April 1943; botanist; ed. Stockholm Univ.; Curator of the Herbarium, Bergius Botanic Garden, Stockholm. Collected in South West Africa/Namibia with her husband, H. E. Wanntorp (q.v.) in 1980.



FIG. 20. N. van Rooyen

Michael Webb

Webb, Mabel Margaret (later Mrs Gerber) (1918–)

b. Pietermaritzburg, 19 May 1918; teacher and housewife; ed. Natal Univ., Pietermaritzburg, graduating B.Sc. (1938), H.E.D. (1939). Taught in Natal and Transvaal until her marriage in 1942, and finally settled in Cape Town where she undertook part-time work in the office of the Kirstenbosch Botanic Garden.

Made a small herbarium collection while a student; specimens in NU.

* **Webb, Michael** (1924–)

b. Durban, Natal, 18 March 1924; zoologist and marine biologist; ed. Natal Univ., Pietermaritzburg, 1942–44, graduating B.Sc., later M.Sc. (1947) and D.Sc. (1957). Appointed to Dept of Zoology, Fort Hare, as Lecturer (1948–51), Senior Lecturer (1952–56), Professor (1957–59); Lecturer in Zoology, Natal Univ. (Medical School), 1960–63; Univ. of Durban Westville, Senior Lecturer 1964–74, Associate Professor 1975; from 1976 Professor of Zool-

ogy, Univ. of Stellenbosch. Studies mainly in the field of marine zoology. Also interested in horticultural pursuits and in plants in general. Fig. 20.

Collected while a student at Natal University, mainly in Natal and Transkei; specimens c. 500, in NU.

* **Weeks, G.T.** (fl. 1915)

Started a collection of the Witwatersrand flora in 1915 and this formed the nucleus of the Moss Herbarium, Univ. of Witwatersrand; specimens in J.

* **Weimark, August Henning** (1903–80)

b. Hammar, Närke Province, Sweden, 22 May 1903; d. Lund, Sweden, 12 June 1980. His first appointment was as assistant at the Botanical Museum, University of Lund, in 1928.

Ref.: Almborn in *Taxon* 31: 616–618 (1982).

Weitz, Frans Manuel (1954–)

b. Bredasdorp, C.P., 1 Aug. 1954; botanist; ed. Univ. of Western Cape, graduating B.Sc. in 1974, B.Sc. (Hons) in 1976. Appointed to Univ. of Western Cape as Senior Laboratory Assistant, 1975–79, and as Lecturer from 1980. Undertaking a revision of the genus *Corymbium*.

Specimens c. 400, from S.W. Cape; in UWC.

* **West, Ethel** (later Mrs **Anderson**) (c. 1870–1939)

b. London, England, c. 1870; d. Grahamstown, c. 1939; housewife and keen naturalist. Came out with her mother and two brothers to Port Elizabeth, where her elder stepbrother had a business, and later married Thomas Anderson, who was manager of the Riet River Syndicate near Douglas. While in Port Elizabeth she was a member of the Eastern Province Naturalists Society and E.P. Photographic Society.

Collected over 500 specimens: (a) leg. E. West, mainly in the eastern Cape and some around the Peninsula, in GRA, BOL, K, NH, PRE; and (b) leg. E. Anderson, mainly in Griqualand West, in BOL, KMG, SAM. Her collecting register is in GRA.

Commemorated in *Leonotis westiae* Skan.

Ref.: pers. comm. from her nephew, Dr Oliver West; Codd & Gunn in *Veld & Flora* 69: 145 (1983).

Westendorp, Gérard-Daniel (1813–68)

b. The Hague, Netherlands, 1813; d. Dendermonde, Belgium, 1868; medical doctor in the Belgian army. Collected some specimens around Cape Town; in BR (pers. comm. from Mr P. Bamps, Brussels, April 1984).

Whellan, James Arden (1915–)

b. Liverpool, England, 1915; entomologist; ed. Liverpool Univ. 1934–40, graduating B.Sc. Served in World War II with rank of Lieut. R.E.M.E. Government entomologist in Rhodesia (now Zimbabwe) 1947–67; Malawi 1967–74; Malaysia 1974–76. Settled in Australia after retirement.

Specimens c. 5 000, collected mainly in Zimbabwe and Malawi, and some while on holiday in South Africa; in SRGH, PRE.

Commemorated in *Euphorbia whellanii* Leach.

* **Wild, Hiram** (1917–1982)

d. Johannesburg, 28 April 1982.

Ref.: Ernst in *Vegetatio* 51: 125–128 (1983), with portrait and list of publications.

Willems, Liliane Francine: see **Hosten, Liliane Francine**

Williams, Benjamin Murray Burdon (1956–)

b. Cape Town, 20 Nov. 1956; horticulturalist. After qualifying as a photogravure engraver, he joined the staff of the National Botanic Gardens, Kirstenbosch.

Specimens c. 300, from western Cape, in NBG.

* **Williams, Charles R. Farmer** (?–1980)

Was Chief conservator in the Indian Forest Service and, after serving in World War II, he joined the Faculty of Forestry, Stellenbosch Univ. as lecturer in forest botany 1951–59, and was largely responsible for building up their herbarium. After his retirement he lived in Somerset West where he died in 1980 (pers. comm. from H.C. Taylor and Prof. D.G.M. Donald of Stellenbosch, 1982). Fig. 21.

Specimens in FFS, which Herbarium bears his name.

Ref.: Codd & Gunn in *Veld & Flora* 70: 67 (1984).



FIG. 21. C. R. F. Williams

G. Williamson

Williamson, Graham (1932–)

b. Harare (Salisbury), Zimbabwe, 7 March 1932; dental surgeon; ed. Natal Univ. 1951; Witwatersrand Univ. 1952–57, graduating B.D.S. and, in 1982, M.Sc. (Wits) for a dissertation on the orchid flora of Zambia. From 1958–77 he practised in Zambia, making extensive collections in this territory and in Malawi, with special reference to Orchidaceae. In 1977 he joined the Anglo-American Corporation of S. Africa as senior Dental Officer and was posted at

Oranjemund, S.W. Africa/Namibia. Wrote *Orchids of S. Central Africa* (1977), completed Orchidaceae for the Flora of Witwatersrand (in preparation) and is presently working on Orchidaceae for the *Fl. Zambesiaca*. In 1981 he was awarded the Harry Bolus Medal by the Botanical Society of S. Africa. Fig. 21.

Commemorated in *Habenaria williamsonii* Cribb, *Stolzia williamsonii* Cribb, *Cardiochilos williamsonii* Cribb, *Eulophia williamsonii* Cribb, *Euphorbia williamsonii* Leach.

Collected 2 760 numbers in Central Africa (in K, SRGH) in addition to many collections jointly from time to time with L.C. Leach, R.B. Drummond and B.K. Simon of SRGH; 550 specimens collected in Diamond Area No. 1 and in Richtersveld (BOL, lichens in BM, PRE).

* **Winkler, Dorothea Gudrun** (later Mrs Stielau) (1932–)

b. Masama Mission Station, Moshi, Tanzania, 6 June 1932; came to South Africa in May 1947; ed. Stellenbosch Univ. 1951–55, graduating B.Sc., M.Sc. and later H.E.D. (Natal Univ.) 1974. Botanical Assistant, Compton Herbarium, 1955–56; temporary lecturer in botany, Natal Univ. 1957; teacher of mathematics in Pietermaritzburg from 1974. Married to Werner Johannes Stielau, Professor of Animal Science, Faculty of Agriculture, Natal Univ., 9 July 1958.

Specimens c. 200, Cape Province, in NBG.

* **Wood, John Medley** (1827–1915)

Further ref.: Schrire in *Bothalia* 14: 223 (1983).

Woods, Denis Hamilton (1911–1977)

b. Salisbury (now Harare), Zimbabwe, 1911; d. Cape Town, 1977; businessman, mountaineer and conservationist. On military service during World War II. During his rambles he studied the indigenous flora and fauna and wrote many articles in the *Journal of the Botanical Society of S.A.*, the *Journal of the Mountain Club of S.A.* and *African Wild Life*, championing the cause of conservation.

Specimens from S.W. Africa/Namibia, S.W. Cape and Namaqualand; in NBG.

Ref.: *Veld & Flora* 64: 13 (1978), with portrait.

UITTREKSEL

Biografiese notas oor plantversamelaars, bykomstig tot dié wat reeds in Botanical Exploration of Southern Africa deur Mary Gunn en L. E. Codd (1981) gepubliseer is, met inbegrip van 'n aantal versamelaars nie voorheen vermeld nie, word verskaf.

REFERENCES

- GUNN, M. & CODD, L. E., 1981. *Botanical exploration of Southern Africa*. Cape Town: Balkema.
- INDEX HERBARIORUM PART II, COLLECTORS, 1954–83. Published in the *Regnum Vegetabile* series by the I.A.P.T. (1) A–D (1954) by Lanjouw & Stafleu; (2) E–H (1957) by Lanjouw & Stafleu; (3) I–L (1972) by Chaudhri, Vegter & De Wal; (4) M (1976) by Vegter; (5) N–R (1983) by Vegter.
- TÖLKEN, H. R., 1971. *Index Herbariorum Austro-Africanorum*. Distributed in cyclostyled form by the S. African Association of Botanists.