

Wednesday Walk – Burra School Block – 19 November 2014

The Burra School Block is opposite Burra Park. It is a small reserve but very species rich and there were many things flowering. There were large quantities of *Podolepis jaceoides* flowering and still quite a few *Microseris lanceolata*. The *Leucochrysum albicans* var. *tricolor* were having a second flush and a few of the blue devils - *Eryngium ovinum* - were tinged with blue. Other flowers were *Ajuga australis* (good patches), *Chrysocephalum apiculatum*, *Cynoglossum australe*, *Hypericum gramineum*, *Hypoxis hygrometrica*, *Hibbertia obtusifolia*, *Opercularia hispida*, *Pimelea curviflora*, *Scleranthus diander*, the 3 vittadinias (*V. cuneata*, *V. gracilis*, *V. meulleri*) and some stunning bluebells - *Wahlenbergia communis* and *W. stricta* - along with a pink one. We found *Brachyscome willisii* but it had finished flowering and was a little chewed. There were also a couple of *Swainsona sericea* flowering and we found lots of seed on *S. recta*. There were some lovely grasses flowering - *Themeda triandra*, *Rytidosperma carphoides*, *Amphibromus nervosa*, *Lachnagrostis filiformis* and *Poa sieberiana*.

For photos below: JG = Jean Geue; RF = Roger Farrow



Burra School Reserve JG



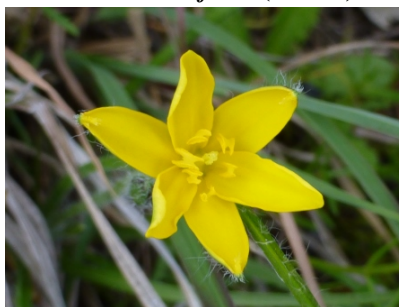
Lomandra multiflora (female) JG



Xerochrysum viscosum JG



Hypericum gramineum RF



Hypoxis hygrometrica RF



Geranium solanderi RF



Ajuga australis JG



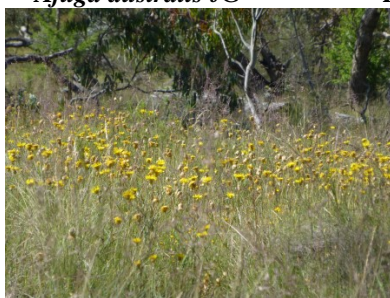
Bossiaea buxifolia RF



Microtis unifolia RF



Wahlenbergia stricta RF



Podolepis jaceoides RF



Podolepis jaceoides JG



Opercularia hispida RF



Amphibromus nervosus RF



Amphibromus nervosus RF



Scleranthus diander RF

Plant List for Burra School Block – 19 November 2014

? indicates that those present were unsure of the plant name

- | | |
|-----------------------------------------|-------------------------------------|
| Acacia dealbata | Eucalyptus rossii |
| Acacia mearnsii | Eucalyptus rubida |
| Acacia paradoxa | Euchiton involucratus |
| Acaena ovina | Galium gaudichaudii |
| Ajuga australis | Geranium retrorsum |
| Amphibromus nervosus | Geranium solanderi |
| Anthosachne scabra | Glycine clandestina |
| Arthropodium minus | Glycine tabacina |
| Asperula conferta | Gonocarpus tetragynus |
| Austrostipa bigeniculata | Haloragis heterophylla |
| Austrostipa scabra ssp. falcata | Hibbertia obtusifolia |
| Bossiaea buxifolia | Hovea heterophylla |
| Brachyscome willisii | Hydrocotyle laxiflora |
| Bulbine bulbosa | Hypericum gramineum |
| Bursaria spinosa | Hypoxis hygrometrica |
| Calocephalus citreus | Kunzea ericoides |
| Calotis scabiosifolia var. integrifolia | Lachnagrostis filiformis |
| Carex appressa | Leptorhynchus squamatus |
| Cassinia longifolia | Leucochrysum albicans var. tricolor |
| Cheilanthes austrotenuifolia | Lomandra filiformis ssp. coriacea |
| Chrysocephalum apiculatum | Lomandra filiformis ssp. filiformis |
| Chrysocephalum semipapposum | Lomandra multiflora |
| Clematis microphylla | Luzula densiflora |
| Convolvulus erubescens | Melichrus urceolatus |
| Craspedia variabilis | Microlaena stipoides |
| Crassula sieberiana | Microseris lanceolata |
| Cryptandra amara var. longiflora | Microtis sp. |
| Cymbonotus lawsonianus | Opercularia hispida |
| Cynoglossum australe | Pimelea curviflora |
| Daucus glochidiatus | Plantago gaudichaudii |
| Desmodium varians | Plantago varia |
| Dianella longifolia | Poa sieberiana |
| Dianella revoluta | Podolepis jaceoides |
| Dichelachne sp. | Ranunculus lappaceus |
| Eleocharis sp. | Rytidosperma carphoides |
| Eryngium rostratum | Rytidosperma sp. |
| Eucalyptus bridgesiana | Schoenus apogon |
| Eucalyptus melliodora | Scleranthus biflorus |
| Eucalyptus polyanthemus | Scleranthus diander |

Sebaea ovata
Senecio quadridentatus
Stackhousia monogyna
Swainsona recta
Swainsona sericea
Thelymitra sp.
Themeda triandra
Triptilodiscus pygmaeus
Viola betonicifolia
Vittadinia cuneata
Vittadinia gracilis
Vittadinia muelleri
Wahlenbergia communis
Wahlenbergia gracilis
Wahlenbergia stricta
Wurmbea dioica
Xerochrysum viscosum