



Haritarium

Family Code: 570

Species code: 7- 1A

Naoroji Godrej Centre for Plant Research

Camptorrhiza indica S.R.Yadav, N.P.Singh & B.Mathew

Botanical name: *Camptorrhiza indica* S.R.Yadav, N.P.Singh & B. Mathew

Vernacular name: -

Family : Colchicaceae

Status: Critically endangered(Mishra & Singh, 2001), **Vulnerable** (Gaikwad & Yadav, 2004),

Key characters: Anthers latrorse; style 1, simple, filiform, with an apical punctiform stigma

Description: Small erect herbs, allied to the genus *Iphigenia*, 15-25 cm high, erect, perennial; corms up to 1.5 X 1.3 cm, ovate to subglobose; stems solitary, rigid. Leaves 3-5, cauline, alternate, 5-15 X 0.3-0.7 cm, Linear-lanceolate, the leaf base sheathing stem. Inflorescence a cymbose raceme, 3-6 flowered. Flowers bright pink to pinkish-mauve, white in bud stage. Pedicels up to 3cm long. Capsules obovoid, 3-locular with 7-15 seeds, 0.6-1.0 X 0.5 -0.7 cm. Seeds ovoid, brown. 2.5-3.0 X 2.5-3.0 mm,

Flowering and fruiting: June- July.

Distribution: Endemic to Maharashtra.

Reported Localities: Maharashtra - A. Ratnagiri -. Dharmashala

Ecology: Occurs rarely on the open plateaux of lower altitudes (below 600m). More prominently seen at Ratnagiri airport.

Association: No specific plant association is observed.



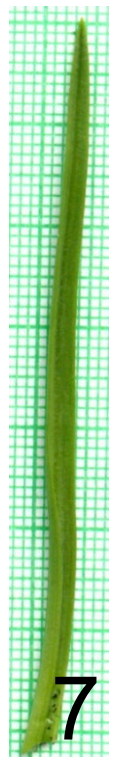
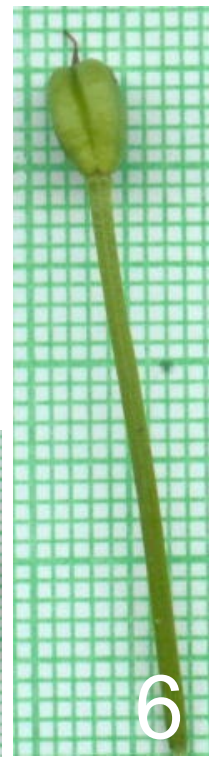
Haritarium

Family Code: 570

Species code: 7- 1B

Naoroji Godrej Centre for Plant Research

***Camptorrhiza indica* S.R.Yadav, N.P.Singh & B.Mathew**



1.Habit, 2. Flower, 3.Habitat, 4.Inflorescence, 5. Bulb, 6. Pod, 7. Leaf.



Haritarium

Family Code: 570

Species code: 7- 1C

Naoroji Godrej Centre for Plant Research

Camptorrhiza indica S.R.Yadav, N.P.Singh & B.Mathew





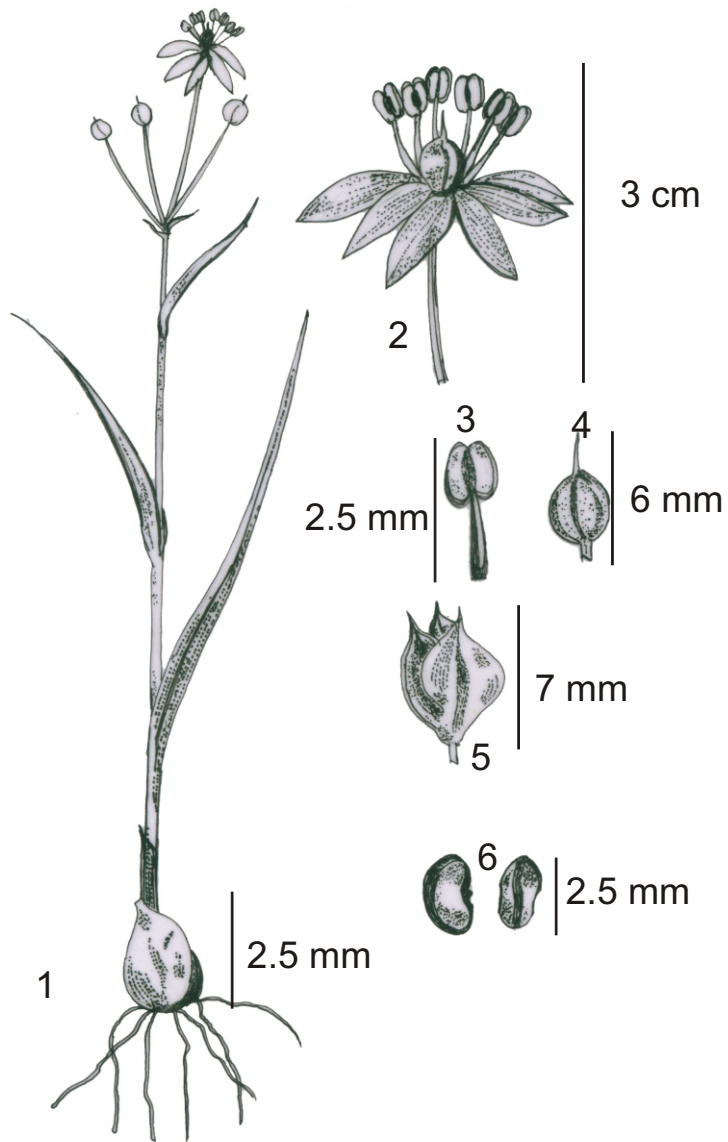
Haritarium

Family Code: 570

Species code: 7- 1D

Naoroji Godrej Centre for Plant Research

Camptorrhiza indica S.R.Yadav, N.P.Singh & B.Mathew



1. Habit, 2. Flower, 3. Stamen, 4. Pistil, 5. capsule, 6. Seed



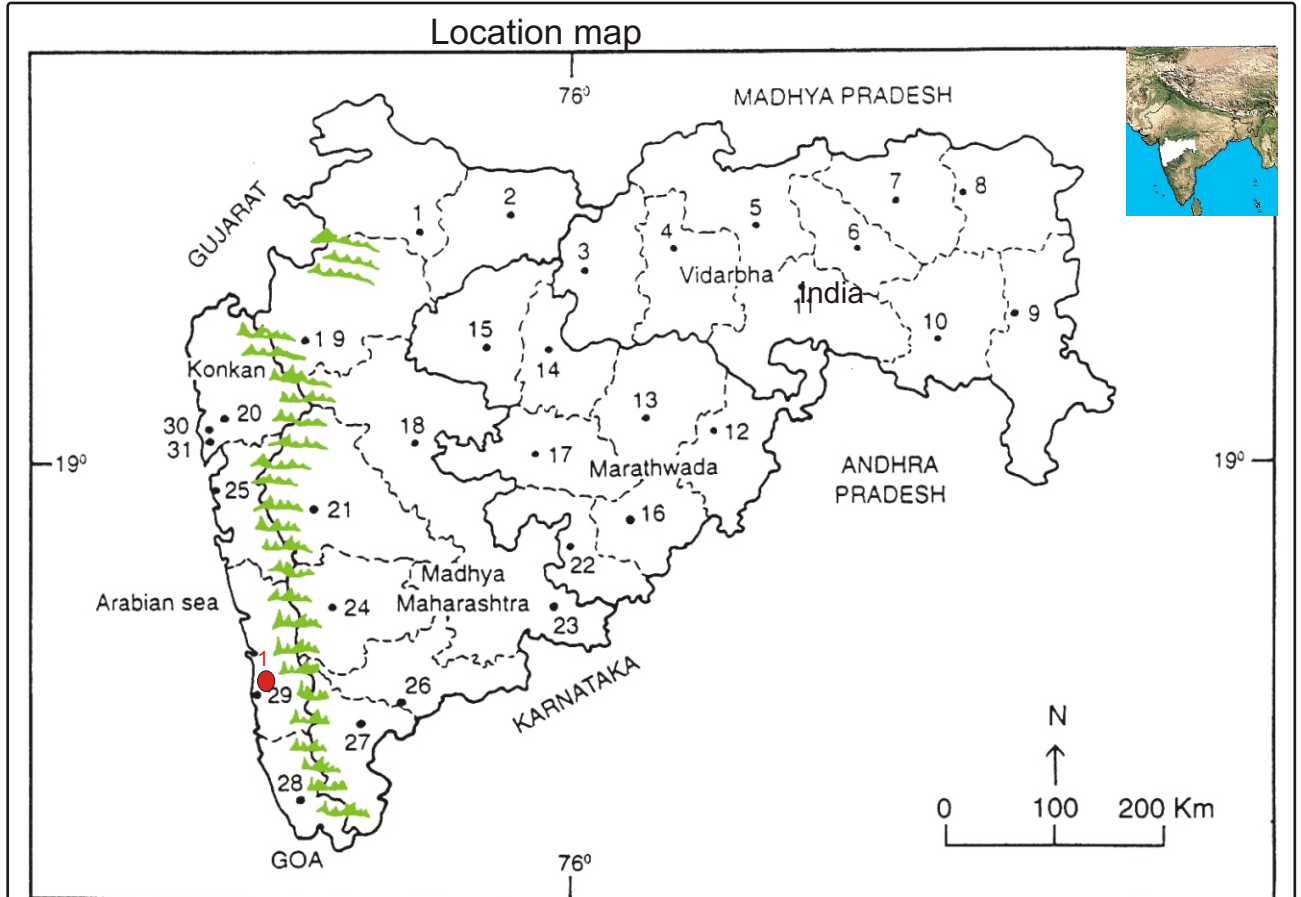
Haritarium

Family Code: 570

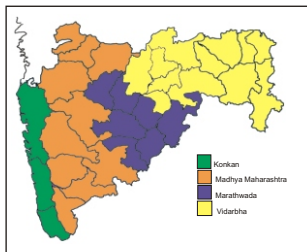
Species code: 7- 1E

Naoroji Godrej Centre for Plant Research

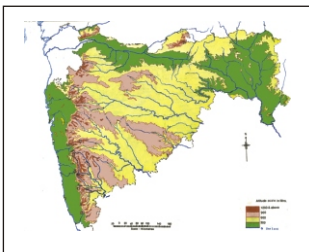
Camptorrhiza indica S.R.Yadav, N.P.Singh & B.Mathew



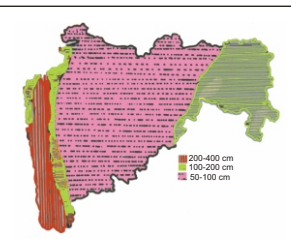
1.Dhule 2.Jalgaon 3. Buldhana 4.Akola 5.Amaravati 6.Wardha 7.Nagpur 8. Bhandara 9. Gadchiroli
 10. Chandrapur 11. Yavatmal 12. Nanded 13. Parbhani 14. Jalna 15. Aurangabad 16.Latur
 17. Beed 18. Ahmadnagar 19 Nashik 20. Thane 21. Pune 22. Osmanabad 23. Solapur 24.Satara
 25. Raigad 26.Sangli 27. Kolhapur 28. Sindhudurg 29. Ratnagiri 30.Mumbai 31.Greater Mumbai.



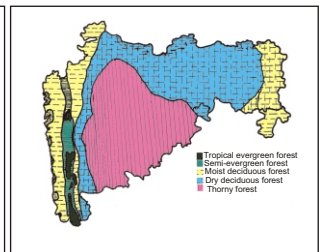
Geographical regions 1



Physical map 2



Rain fall map 3



Forest types 4

● Distribution districts - 1.Ratnagiri - Dharmashala near Pavas.

Geographical distribution:

Latitude (DMS): 16 ° 58' N & Longitude (DMS): 73 ° 17'E;



Haritarium

Family Code: 570

Species code: 7- 1F

Naoroji Godrej Centre for Plant Research

Camptorrhiza indica S.R.Yadav, N.P.Singh & B.Mathew

References:

1. Gaikwad S.P. & S.R. Yadav(2004): T. Pullaiah (ed.)Endemic flowering plant species of Maharashtra and their possible utilization; **Biodiversity in India**, Regancy publications, New Delhi:50.
- 2.Laxminarasimhan, P.(1996): in B.D. Sharma, S. Karthikeyan & N.P.Singh (eds), **Flora of Maharashtra state, Monocot**. B.S.I., Calcutta: 121.
3. Mishra D.K. & N.P. Singh (2001): **Endemic and Threatened flowering plants of Maharashtra**, B.S.I., Calcutta: 223-224.
- 4.Tetali, *et al.* (2000): **Endemic Plants of India (A Status Report of Maharashtra State)**. Naoroji Godrej Centre for Plant Research, Shirwal: 78.
5. Yadav, S.R. & N.P. Singh & B. Mathew (1993): A new species of *Camptorrhiza* (Colchicaceae) from India. *Kew Bull.* 48:735-737.