

FUMARIACEAE

Corydalis

C. pauciflora

C. aurea

C. sempervirens



http://www.botan.uu.se/magnus_hemsida/Corydalis%20usse...ensis.jpg



© William Cullina

http://williamcullina.com/files/Download/corydalis_aurea_1_5182.jpg



http://farm4.static.flickr.com/3287/2697710338_78f4434a65_o.jpg

Information

- Kingdom *Plantae*, the Plants
- Division *Magnoliophyta*, the Angiosperms (flowering plants)
 - Class *Magnoliopsida*, the Dicotyledons
 - Subclass *Magnoliidae*
 - Order *Papaverales*
 - Family *Fumariaceae*, the Fumitories
 - » Genus *Corydalis*, the Corydalis

(It has also been considered a subfamily of *Papaveraceae*- class book by Walters, Keil, and Murrell)

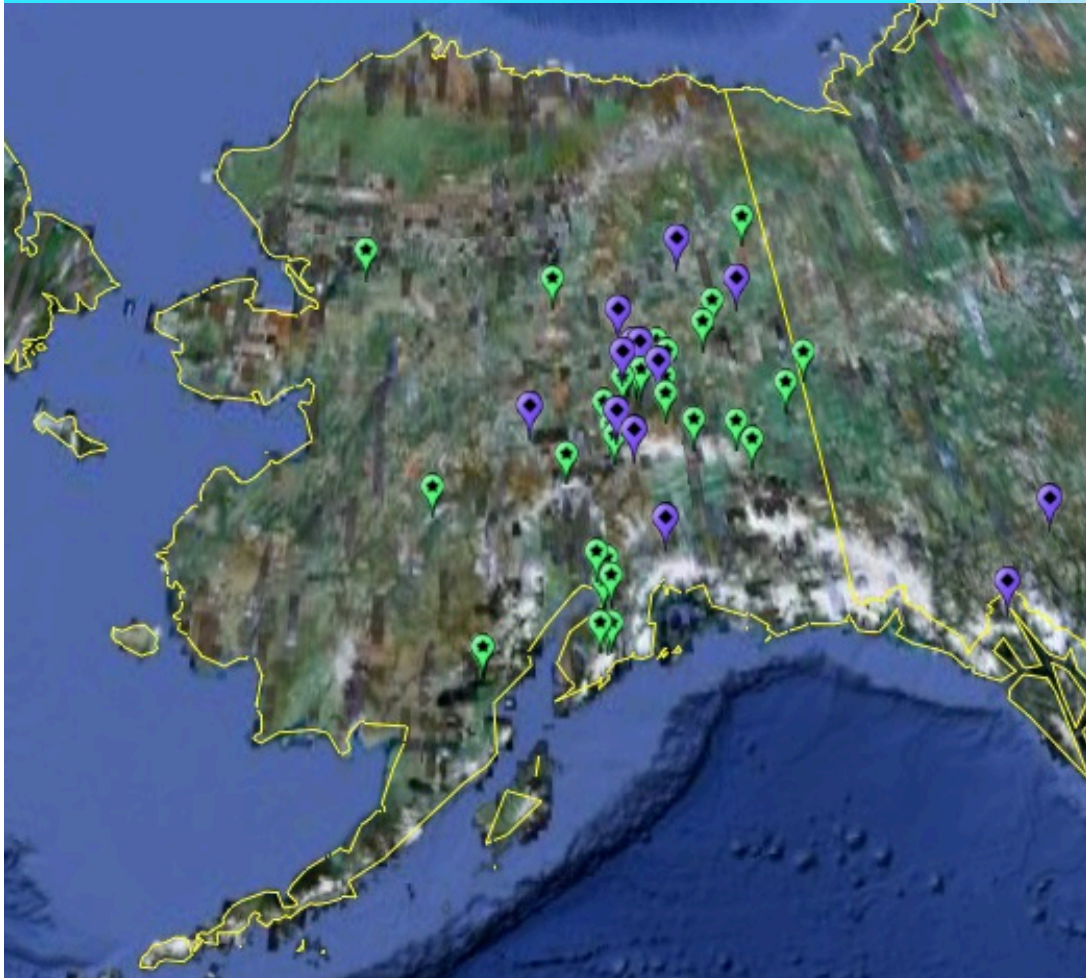
Character	Subfamily Papaveroideae	Subfamily Fumarioideae
Habitat	Annual or perennial herbs, shrubs, rarely small trees	Annual or perennial herbs
Latex	Present	Absent
Sepals	2-3, large, enclosing flower bud	2, small and bract-like, much shorter than flower bud
Symmetry	Radial or nearly so, fully distinct	Bilateral or isobilateral (4 petals in 2 unequal pairs), the inner cohering at tip
Spurs	Absent	Present on 1 or 2 petals
Stamens	(4-)many, equal	6, tetradynamous

Corydalis

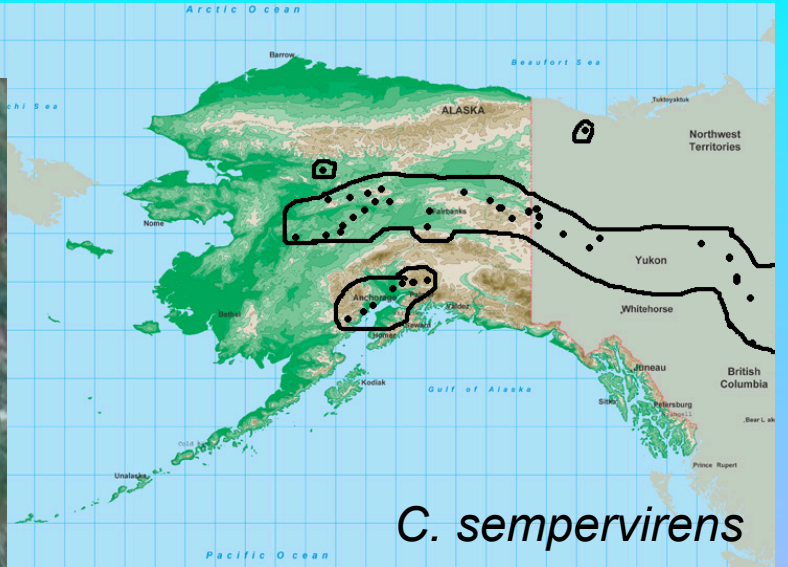
Tender glabrous herbs, annual or biennial or **perennial**, with watery juice. Leaves dissect. Flowers hypogenous, irregular, diadelphous; sepals small, scale like; corolla spurred below; fruit a slender pod like 2-valved capsule; seeds small, black, shiny.

Corydalis, from the Greek korudallis (*korydallis*), "crested lark", in reference to the shape of the flower resembling that of the bird's spur.

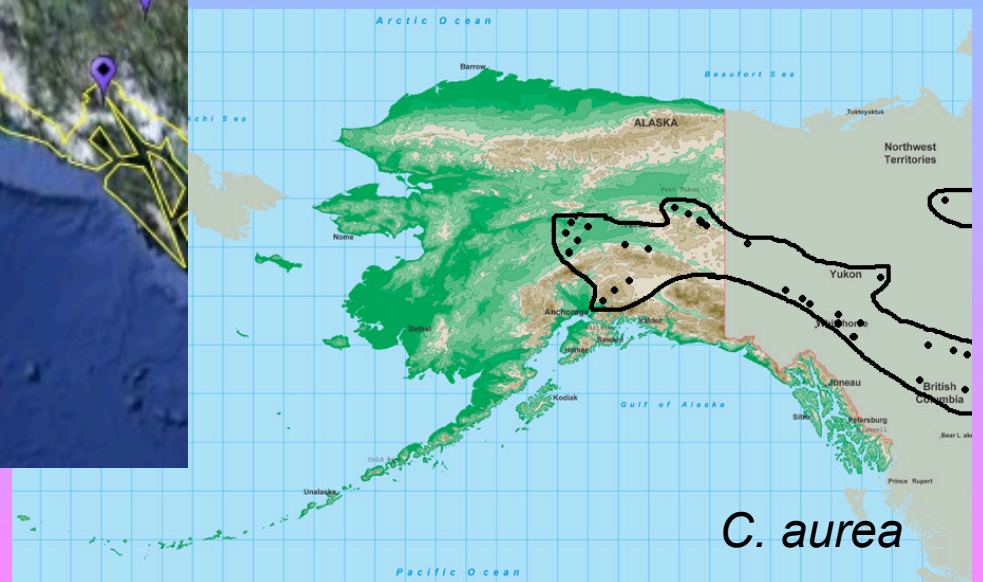
Distributions in Alaska/Yukon



Green- *C. sempervirens*
Purple- *C. aurea*



C. sempervirens

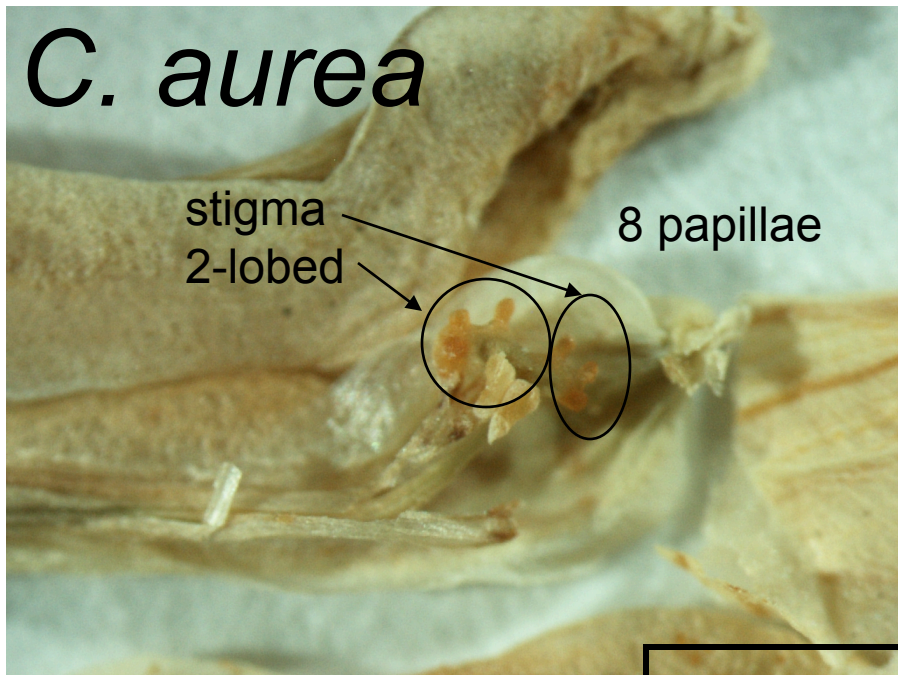


C. aurea

C. aurea

stigma
2-lobed

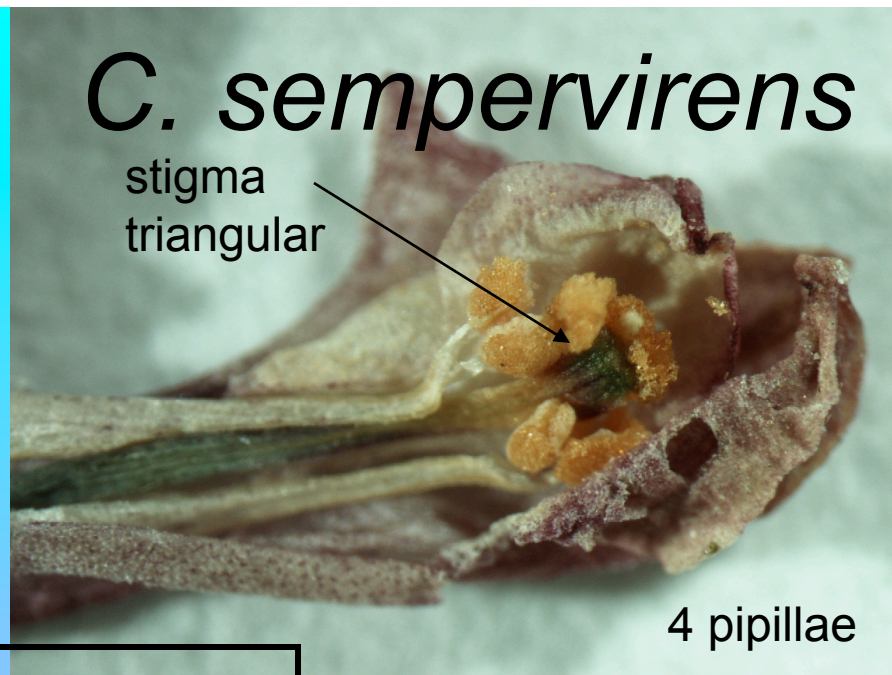
8 papillae



C. sempervirens

stigma
triangular

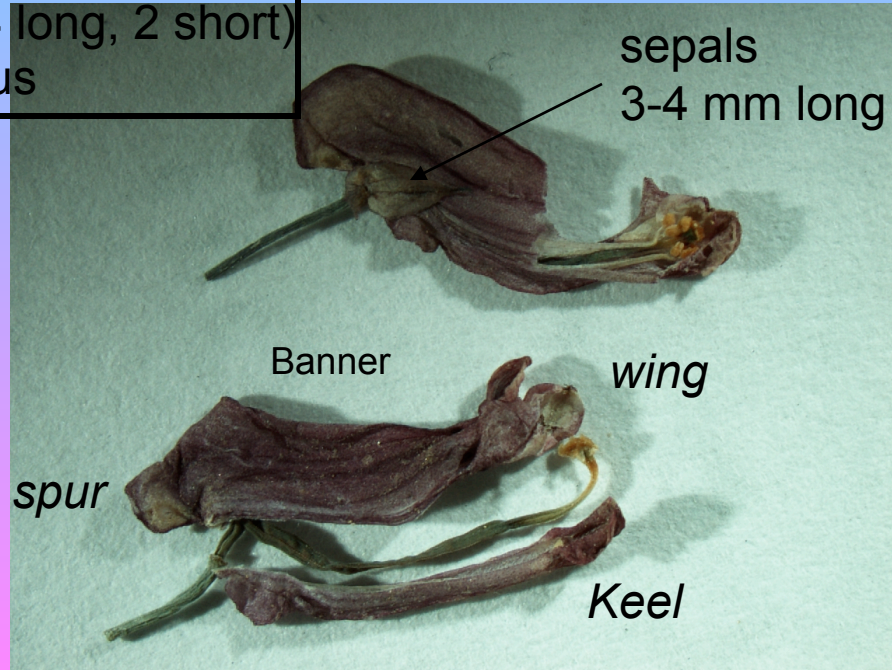
4 papillae



6 stamen
(tetradynamous 4 long, 2 short)
5 merous



Sepals
1-3 mm long



sepals
3-4 mm long

Banner

wing

spur

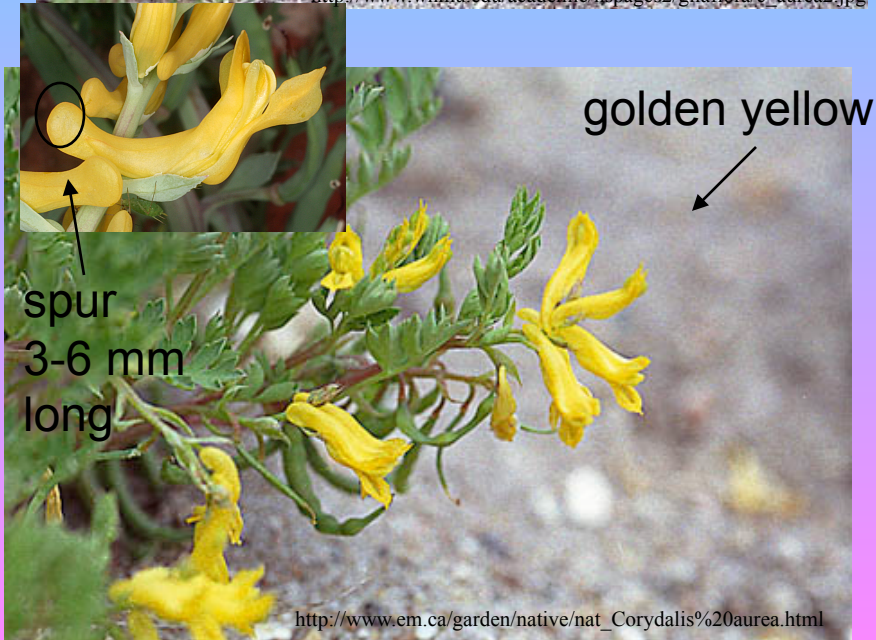
Keel

C. aurea



small,
shrub like

http://www.wnmu.edu/academic/nspages2/gilafflora/c_aurea2.jpg



golden yellow

spur
3-6 mm
long

http://www.em.ca/garden/native/nat_Corydalis%20aurea.html

C. sempervirens



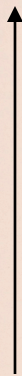
spur
2-4 mm
long

pink with
yellow tips



tall
erect
stem

http://www.em.ca/garden/native/nat_Corydalis%20sempervirens.html



Capsule 1.5-2.5 cm long, pendulous, torulose



bipinnate, more acute



Fumariaceae
CORYDALIS AUREA Willd.
H1202959

FAIRBANKS QUAD.: Fort Wainwright Military Reservation, Yukon-Tanana Uplands, Birch Hill Bluffs (3.5 km NE of airfield), 64°51'08"N, 147°33'29"W, 170-200 m. s.m., steppe communities, on very steep (>45°) dry SSE-facing slopes, on heath over tussock and Birch Creek silt, associated with *Artemisia frigida*, *Silene acaulis*, *Phlox pilularis*, and *Arabis* spp. occasional.

C. aurea

20 Jun 1995

AKNHP-CRREL Floristic Inventory of Fort Wainwright Herbarium, University of Alaska Museum (ALA) accession V120346



Capsule 2-5 cm long, erect-ascending



pinnate, more rounded



ALA V79455
CORYDALIS SEMPERVIRENS (L.) Pers. FUM
H1203280
ALASKA, U.S.A.

CIRCLE QUAD.: Chena Dond Trail, 65°04'N, 146°28'W, 914 m.s.m., Picea forest, 1 mile along trail.

C. sempervirens

Keller, S. and Holmes, K. 1133 18 Jul 1984

University of Alaska Herbarium (ALA)

C. aurea Willd.

Use Medicinal: Amerindians used tea for painful menstruation, backache, diarrhea, bronchitis, heart diseases, sore throat, and stomach aches; inhaled fumes from burning roots for headaches.

Warning: This plant is believed to be poisonous to livestock if consumed in quantity due to high alkaloid content. Humans should generally avoid ingesting plants that are toxic to animals.

Literature Cited

Arctos. Multi- Institution, multi-Collection Museum Database.

<http://arctos.database.museum/Collections/index.cfm>. April 2009.

Cody, J . W. Flora of the Yukon Territory.

Nrc Research Press. 2; 2002.

Hulten, E. Flora of Alaska and Neighboring Territories

A Manual of the Vascular Plants. Stanford Univ. Pr. 1968

Floral of North America.

http://www.efloras.org/florataxon.aspx?flora_id=1&taxon_id=233500427. April 2009

Floral of North America.

http://www.efloras.org/florataxon.aspx?flora_id=1&taxon_id=233500447. April 2009

