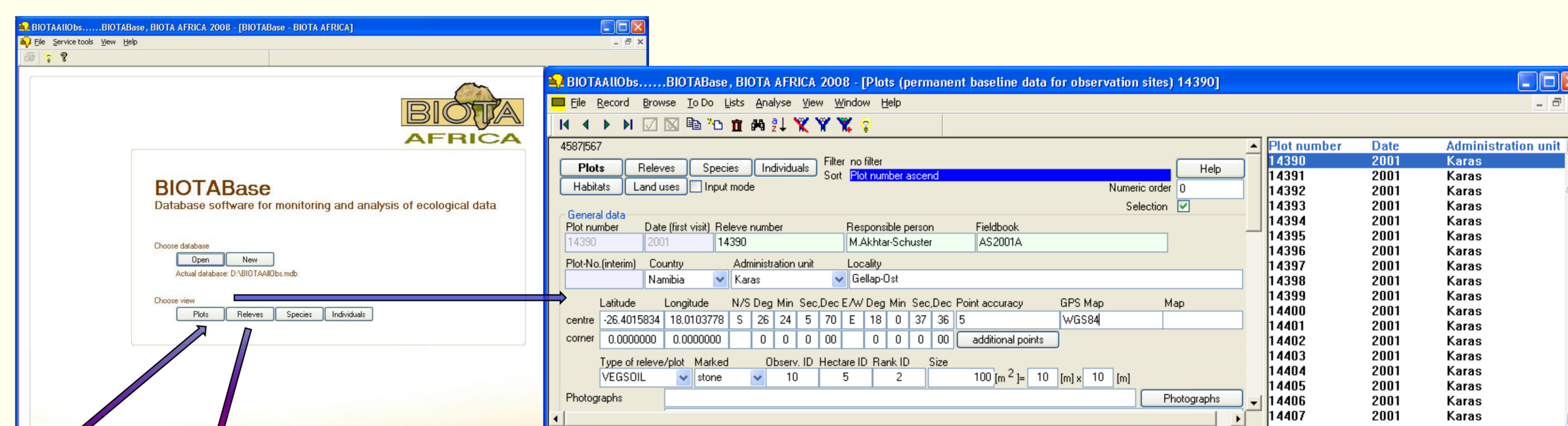
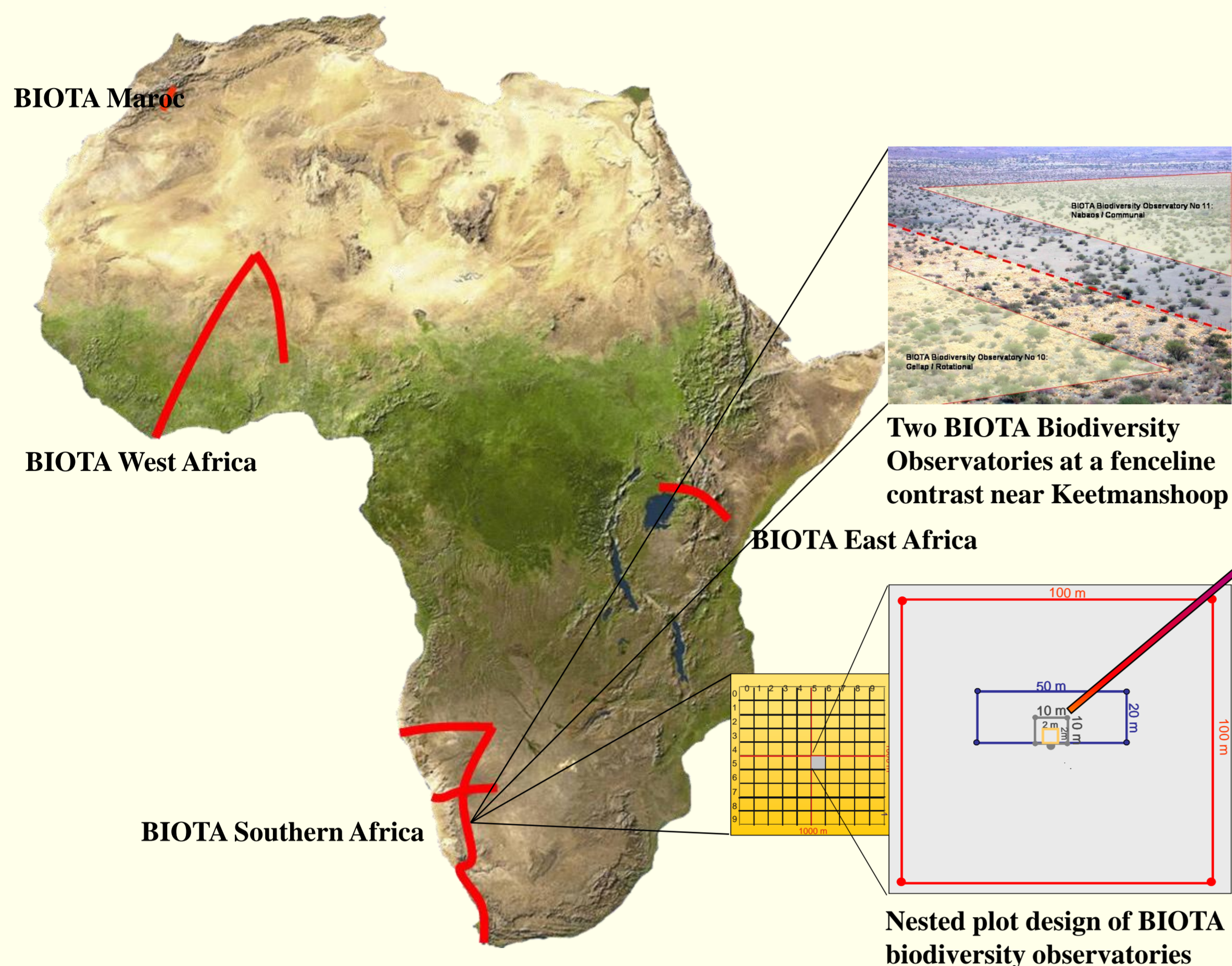


BioMonitoring Data Facility

Muche, G.; Hillmann, T.

Biocentre Klein Flottbek and Botanical Garden - University of Hamburg, Germany
gerhard.muche@botanik.uni-hamburg.de

The BioMonitoring Data Facility forms a joint infrastructure of all regional projects, BIOTA Maroc, BIOTA East Africa, BIOTA West Africa, and BIOTA Southern Africa. BIOTA AFRICA aims at providing robust scientific information about the current status, recent change and future development of biodiversity in hot spot areas of the African continent. To reach these objectives, a vast array of data has to be managed and made available under the aspects of different user interests, dissemination of scientifically meaningful data and results and long-term availability and utilisability. The present activities of the BioMonitoring Data Facility include the continuous effort to inventory and archive all central biota data, the presentation of data and information by internet and the web-facilitation of communication between all BIOTA partners.



2001		2002		2003		2004		2005		2006		2007		2008	
Species name	Total	Species name	Total	Species name	Total	Species name	Total	Species name	Total	Species name	Total	Species name	Total	Species name	Total
Blepharis grossa	0.20	Blepharis grossa	0.30	Blepharis grossa	1.00	Blepharis grossa	0.50	Blepharis grossa	0.01	Blepharis grossa	0.01	Blepharis grossa	0.01	Blepharis grossa	0.30
Leucosphaera bainesii	0.00	Leucosphaera bainesii	0.00	Leucosphaera bainesii	0.50	Leucosphaera bainesii	0.10	Leucosphaera bainesii	0.10	Leucosphaera bainesii	0.10	Leucosphaera bainesii	0.10	Leucosphaera bainesii	1.00
Linum dretum	0.10	Dicoma capensis	0.30	Phaeophilum spinosum	3.00	Stipisphaera bainesii	0.50	Dicoma capensis	0.50	Dicoma capensis	0.50	Dicoma capensis	0.50	Dicoma capensis	0.50
Phaeophilum spinosum	0.10	Leucosphaera bainesii	1.00	Phaeophilum spinosum	0.10	Leucosphaera bainesii	0.50	Monsonia umbellata	0.01	Erneopogon cerchoides	0.10	Leucosphaera bainesii	1.20	Erneopogon cerchoides	0.01
Psychobium biflorum	0.10	Lotononis platycarpa	0.15	Setosoma heterochiton	0.10	Lotononis platycarpa	0.10	Phaeophilum spinosum	2.00	Phaeophilum spinosum	0.01	Microchloa diandra	0.01	Erneopogon cerchoides	0.50
Stipagrostis unguis	2.50	Melinis repens	0.30	Stipagrostis unguis	1.00	Microchloa diandra	0.50	Psychobium biflorum	0.01	Leucosphaera bainesii	1.00	Monsonia umbellata	0.01	Stipagrostis unguis	0.01
Tribulus terrestris	0.10	Milggo cervina	0.30	Wellstedtia dries	0.01	Schmidia kalahariensis	0.50	Lotononis platycarpa	0.01	Phaeophilum spinosum	2.50	Phaeophilum spinosum	2.50	Phaeophilum spinosum	4.50
Addition of covers	3.90	Monsonia umbellata	1.00	Addition of covers	5.71	Psychobium biflorum	0.10	Stipagrostis unguis	0.50	Phaeophilum spinosum	2.50	Wellstedtia dries	0.01	Psychobium biflorum	0.70
		Phaeophilum spinosum	0.30			Phaeophilum spinosum	3.00	Phaeophilum spinosum	0.01	Phaeophilum spinosum	2.50	Phaeophilum spinosum	0.01	Psychobium biflorum	0.70
		Psychobium biflorum	0.30			Psychobium biflorum	0.10	Psychobium biflorum	0.10	Phaeophilum spinosum	2.50	Phaeophilum spinosum	0.01	Psychobium biflorum	0.70
		Schmidia kalahariensis	0.30			Schmidia kalahariensis	0.10	Schmidia kalahariensis	0.01	Phaeophilum spinosum	2.50	Phaeophilum spinosum	0.01	Psychobium biflorum	0.70
		Setosoma heterochiton	4.00			Setosoma heterochiton	0.10	Setosoma heterochiton	0.10	Phaeophilum spinosum	2.50	Phaeophilum spinosum	0.01	Psychobium biflorum	0.70
		Tephrosia degenera	0.10			Tephrosia degenera	0.10	Tephrosia degenera	0.10	Phaeophilum spinosum	2.50	Phaeophilum spinosum	0.01	Psychobium biflorum	0.70
		Trianthema parviflora	0.10			Trianthema parviflora	0.10	Trianthema parviflora	0.10	Phaeophilum spinosum	2.50	Phaeophilum spinosum	0.01	Psychobium biflorum	0.70
		Tribulus terrestris	1.00			Tribulus terrestris	0.50	Tribulus terrestris	0.10	Phaeophilum spinosum	2.50	Phaeophilum spinosum	0.01	Psychobium biflorum	0.70
		Wellstedtia dries	0.10			Wellstedtia dries	0.50	Wellstedtia dries	0.25	Phaeophilum spinosum	2.50	Phaeophilum spinosum	0.01	Psychobium biflorum	0.70
		Addition of covers	14.40			Addition of covers	8.70		8.70	Phaeophilum spinosum	2.50	Phaeophilum spinosum	0.01	Psychobium biflorum	0.70

Data and data access tools

Since the start of the BIOTA AFRICA project eight years ago, a wide array of digital data has been gathered by over 50 subprojects, work-packages, core topics of BIOTA and associated projects. Due to the different subjects and key questions within the various disciplines, this data is of relatively heterogeneous structure. For establishing a BIOTA AFRICA data archive, the data files in their different formats have been collected and archived in a central data pool at the IT centre at the University of Hamburg. BIOTA AFRICA project participants and third parties are provided with data based on a Data Sharing Protocol. A subset of monitoring data is stored in the BIOTABase database system. African zoological voucher specimens from several BIOTA AFRICA subprojects are collected and digitised with the BIODAT database. Online photographic guides help to identify plants from the African ecosystems. Also the tools of the Diversity Workbench and Navikey provide data gathered within the context of BIOTA AFRICA. Much data are available online via the BioCase and GBIF portals. In the long run such data pools are best located at Natural History Collections as so-called Memory Institutions. On the internet a user can look for available data. There is more than one way to search and find data: A first look for an observatory and then what data are available or a first look for a topic and then at which observatories data are available.

http://www.biota-africa.org

Scientific Support for Conservation and Sustainable Use of Biodiversity in Namibia and South Africa

For further information on our Biodiversity Observatories, please click on map or use selection list!

Direct Jump: Home About us News Press Events Participants Contact Quaggasfontein - Soebatsfont.

Weather data Quaggasfontein - Soebatsfont.

List of plant species: Quaggasfontein

Soil science: Quaggasfontein - Soebatsfont.

Soil science: The available web database provides soil inventory data for all observatories listed below. For each observatory Box-Whisker Plots for selected soil properties derived from 20-25 soil profiles gives an overview about the parametric pedodiversity on the observatory. Each profile is documented with profile and site photos as well as selected lab analyses and classification by WRB (1998). Results of classification are summarized in soil distribution map for each observatory.

Box-Whisker-overview of selected soil properties in three depths (cm) on the observatory (RS = rooting space; n°)

Map with location of soil units on the observatory

Ranking of the 1ha-plots

Habitat types of the 1ha-plots