

Fireweed (*Senecio madagascariensis*)



Background

Field identification

Control

Reporting

Risk to environment

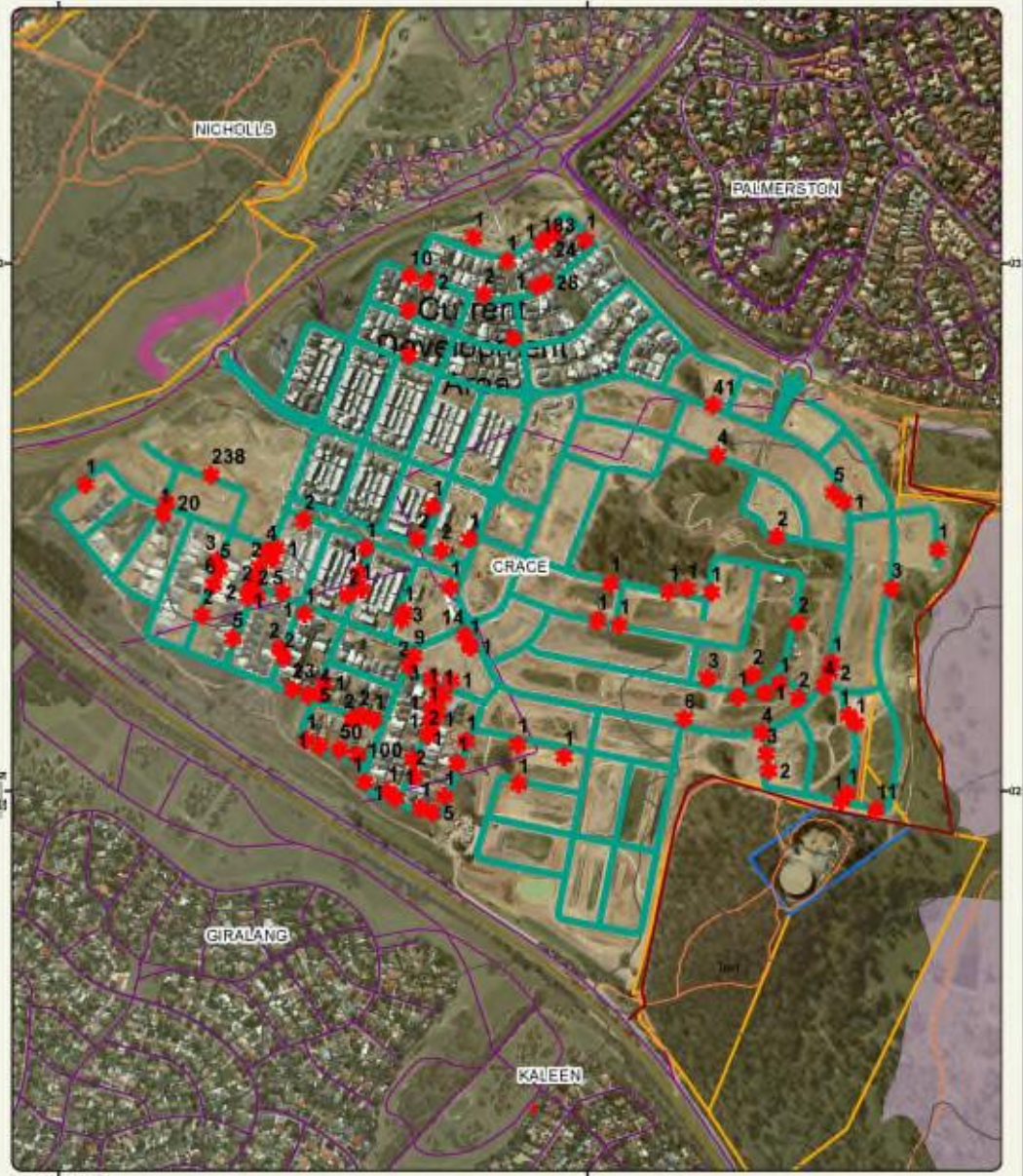
- Weed of National Significance
- Poisonous to horses and livestock
- Very invasive (up to 10,000 wind borne seed per plant)
- Able to outcompete small native wildflowers
- Noxious weed throughout NSW
- High weed risk in ACT and notifiable pest plant

History of invasion

- First record at Floriade in contaminated soil in 2007
- Pre 2011 Madagascan Fireweed found in isolated occurrences
- Spring/Summer 2011 large number of plants found in Gungahlin in couch turf (from Sydney)
- July 2014 germination of numerous seedlings found in turf at Crace and Forde. Biosecurity State of Response declared
- 18 July 2014 Infestation at Coombs Pond B (adjacent to MRC) not associated with couch turf
- Ongoing since 2011 - Isolated plants on arterial roads leading into Canberra

*Environmental Weeds
of Australia*

Fireweed locations CRACE - 25th July 2014



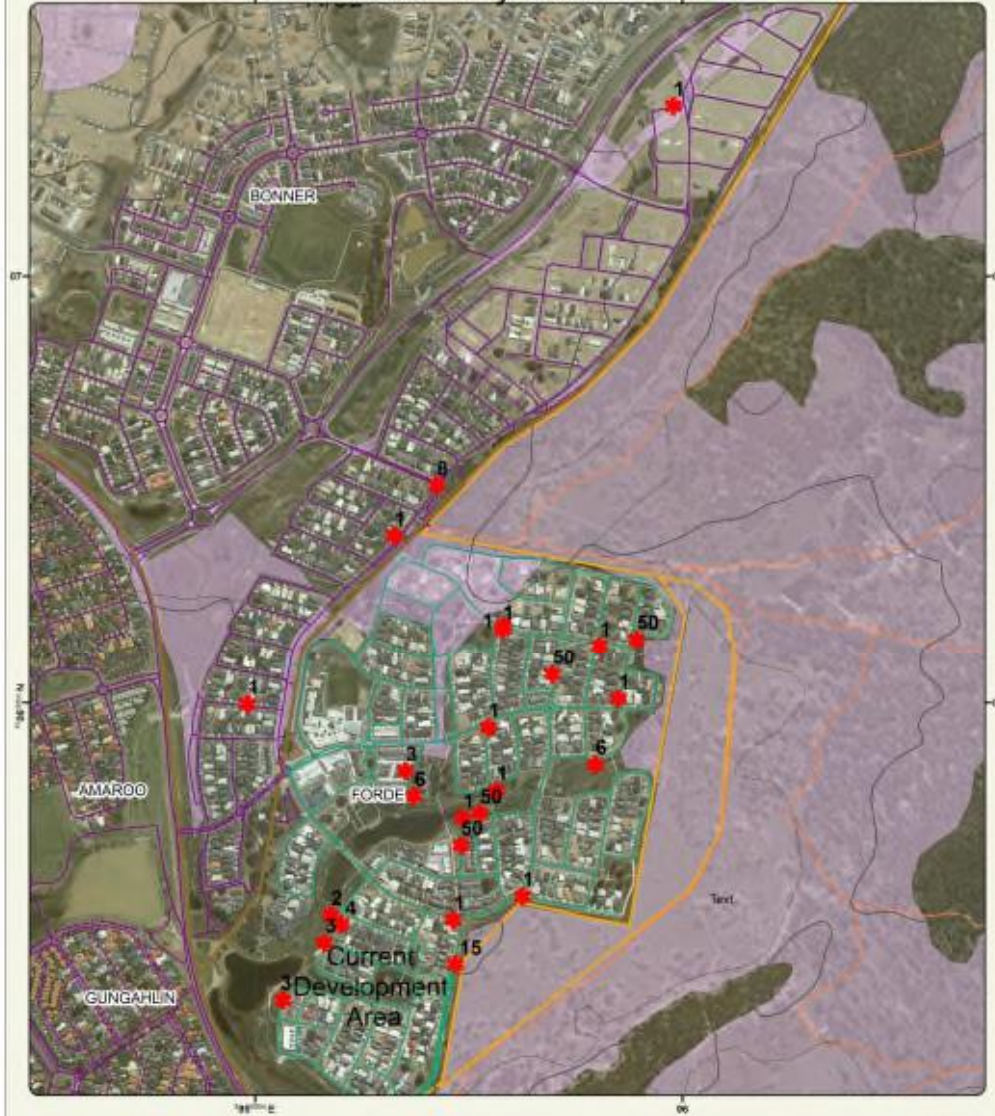
Legend

-  fireweed
-  Crace roads
-  Gungahlin Hill
-  Lowland Temperate Grassland
-  Box Gum Woodland_ACT listed

These are current point locations for fireweed as supplied by the contractor
The number of plants at each location is written in white.



Fireweed locations Forde - 25th July 2014



Box Gum Woodland_ACT listed

Legend

fireweed



These are current point locations for fireweed as supplied by the contractor.
The number of plants at each location is written in white.



Fireweed locations Coombs - 25th July 2014



Box Gum Woodland_ACT listed

Legend

fireweed



These are current point locations for fireweed as supplied by the contractor.
The number of plants at each location is written in white.



Fireweed locations ANU and Cmwllth Park - 29th July 2014



Legend

* fireweed

These are current point locations for fireweed as supplied by the contractor.
The number of plants at each location is written in white.



- 
- **10 cent piece size yellow daisy with 13 petals**
 - Sometimes there are 12 to 15 petals
 - **Numerous flowers**
 - Base of flowers surrounded by 20 greenish bracts
 - **Multi-branched 10 to 70cm tall**
 - **Leaf margins are usually toothed**
 - **Small brown seed with silky tuff of hairs**

Usually
13 petals



Close-up of one of the daisy-like flower-heads
(Photo: Sheldon Navie)

Greenish
flower bracts



Young flower-heads (Photo: Sheldon Navie)

Small
toothed
leaf
margin



Source: EWA app

Toothed lower leaves, which are occasionally also three-lobed (Photo: Sheldon Navie)

Toothed leaf
margin



Source: EWA app

Toothed upper leaves (Photo: Sheldon Navie)

Typical Seedling



Young plant (Photo: Sheldon Navie)

Impact on grazing land eg. Bega Valley



Large infestation (Photo: Forest and Kim Starr, USGS)

Seed head showing fluffy seed



Look-a-likes

- Variable Groundsel (*Senecio pinnatifolius*)
 - native to ACT and NSW
- Ragwort (*Senecio jacobaea*)
 - exotic and noxious
 - no ACT records
- African Daisy (*Senecio pterophorus*)
 - exotic and noxious
 - found in ACT
 - not to be confused with South African Daisy

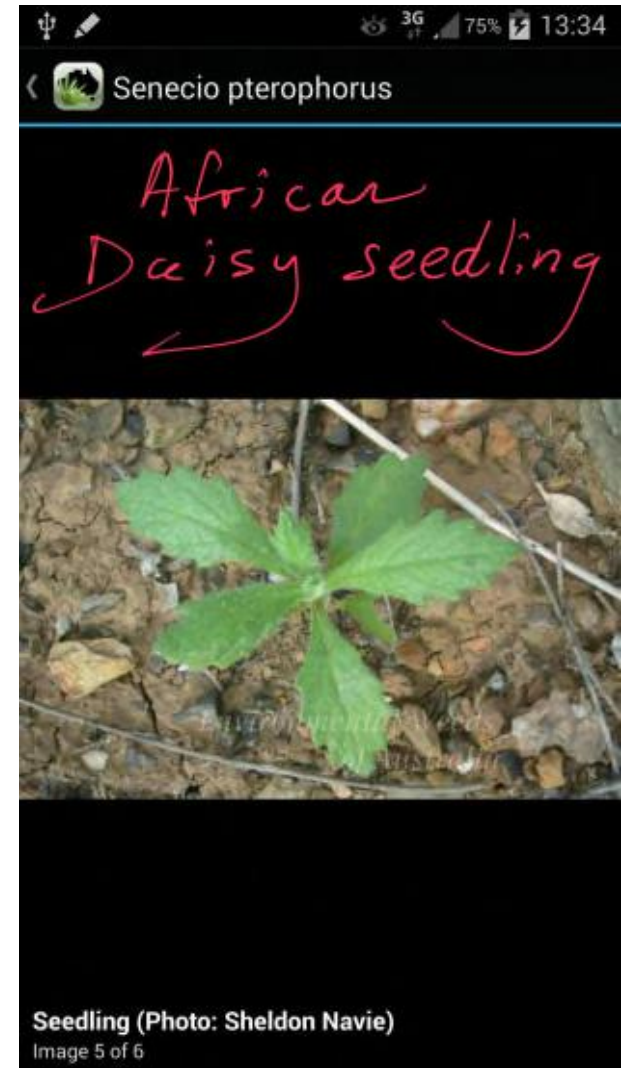
Variable Groundsel



Ragwort



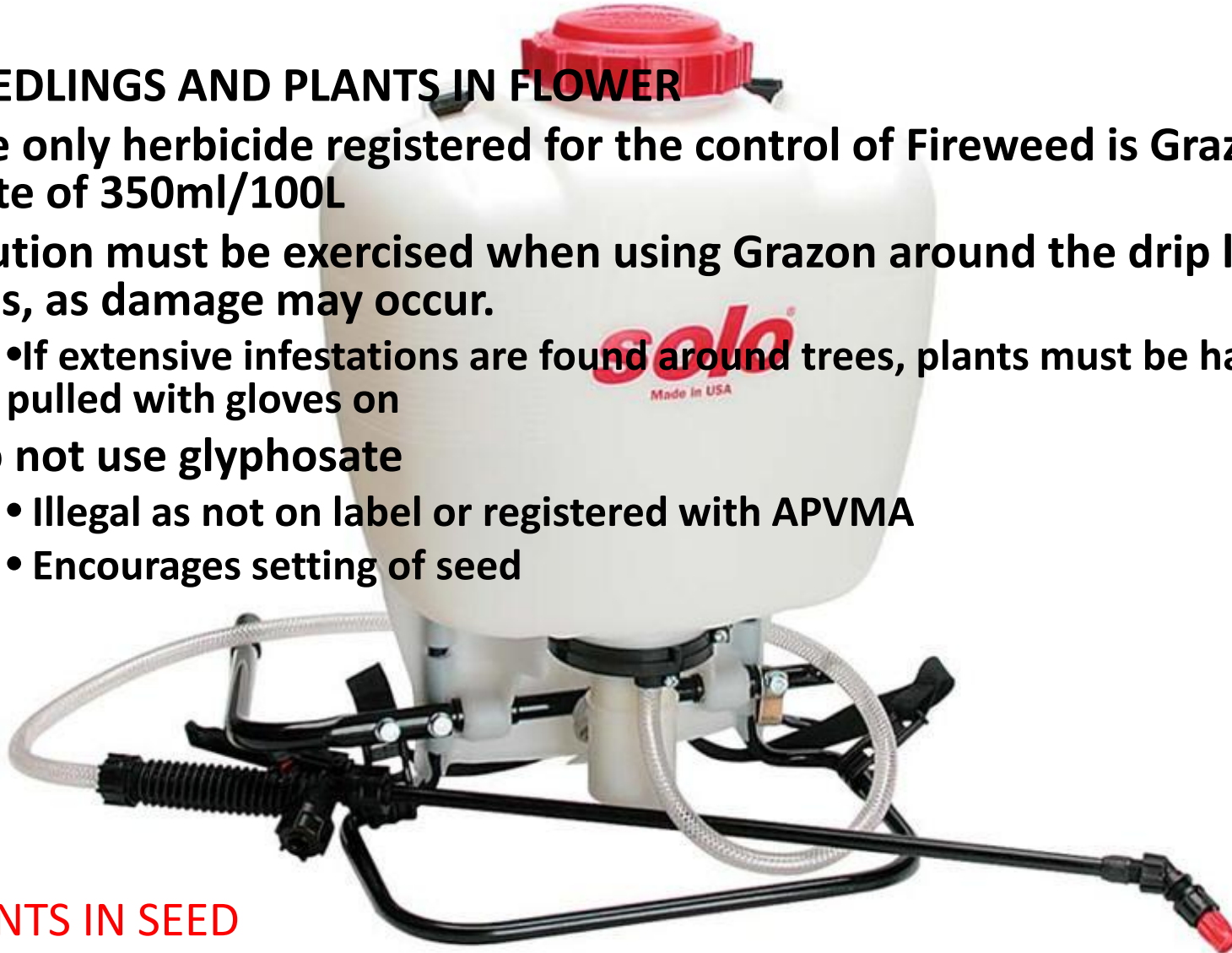
African Daisy – not to be confused with South African Daisy



Fireweed control

SEEDLINGS AND PLANTS IN FLOWER

- The only herbicide registered for the control of Fireweed is Grazon at a rate of 350ml/100L
- Caution must be exercised when using Grazon around the drip line of trees, as damage may occur.
 - If extensive infestations are found around trees, plants must be hand-pulled with gloves on
- Do not use glyphosate
 - Illegal as not on label or registered with APVMA
 - Encourages setting of seed



PLANTS IN SEED

- These must be carefully hand pulled, double bagged, tied off and disposed of in a rubbish bin.

Education and reporting

- Signs are planned for Gungahlin shopping centre, all garden centres and rural suppliers, horse paddocks (private and govt)
- ACT_Parks Flickr site
- Media – Win and ABC interviews
- Reports with photo and accurate location to:
fireweed@act.gov.au