

A Review of Conservation Status and Its Implications on Some Common Wild Edible and Medicinal Plants in Botswana

Demel Teketay*, Tiroyaone Albertinah Matsika, Kamogelo Makgobota and Witness Mojeremane

Department of Range and Forest Resources
Department of Wildlife and Aquatic Resources, Botswana
University of Agriculture and Natural Resources, Private Bag
0027, Gaborone, Botswana

*Corresponding Author

Demel Teketay, Department of Range and Forest Resources, Botswana
University of Agriculture and Natural Resources, Private Bag 0027,
Gaborone, Botswana.

Submitted:2023, July 02; Accepted:2023, July 28; Published:2023, Aug 03

Citation: Teketay, D., Matsika, T, A., Makgobota, K., Mojeremane, W. (2023) A Review of Conservation Status and Its Implications on Some Common Wild Edible and Medicinal Plants in Botswana. *World J Forest Res*, 2(1), 57-68.

1. Introduction

The current knowledge on useful plant species for their medicinal and herbal properties in the African sub-continent is diverse. However, the monitoring and conservation efforts accorded to these species have not been very consistent despite increased attention towards utilizing them. Depending on the societal, industrial and/or personal needs, species provide great health, social, and psychological utility for many [1]. Therefore, it is of great importance to review existing ethnobotanical information and knowledge to advise further and future innovative research possibilities on many of these wild edible and medicinal species. Firstly, this review sought to aggregate plants species with peculiar relevant edible and medicinal characteristics found in Botswana for an in-depth analysis. Secondly, this paper intends to explore the conservation status of the selected species. Lastly, we intend to draw recommendations on further action based on the vulnerability arising from the harvesting and/or use method.

2. Methodology

The review utilises a list of species drawn from herbarium ethnobotanical literature records and accessions. Accession were from Botswana University of Agriculture and Natural Resources Herbarium (BACH), Okavango Research Institute (PUB) and the National Herbarium (GAB). However, the in-depth survey of common WEMP will be limited to five species for easier reference. The five selected species have been identified based on three categories: medicinal plants of economic value, economic wild edible fruit plants, and economic herbal tea plants. The species selected include *Cassine transvaalensis*, *Harpago-*

phytum procumbens, *Sclerocarya birrea*, *Berchemia discolor*, and *Lippia javanica*. The medicinal and herbal properties of the aforementioned species are evaluated with special reference to their conservative statuses and the environmental impacts of their overexploitation. The general use of the species will also be examined, focusing on the parts utilised to extract desired outcomes. Additionally, the species are selected due to the keen interest of exploiters in their economic value on a global scale. Finally, the global impact of the species' popularity is assessed in its conservation at the local level [2].

The conservation status assessments were derived primarily from the IUCN website. For many species which were not featured on the IUCN, the SANBI SABONET Red Listing for South African Plants was used. The latter assessment uses the IUCN criteria and methodology for species conservation assessment, therefore, there was no disparity on how the final conservation status was derived.

3. Results and Discussion

The subsequent review presented a large sample size of 473 wild edible and medicinal plants (WEMP) (Appendix 1). This diversity of plant species with widely recognised edible before medicinal properties belonged to 98 families and 302 genera. Families with atleast five species or more are as represented in Figure 1, otherwise all other families are as shown in the appendix. In Botswana, much of the food and medicinal sources are commonly sought from the Fabaceae, Asteraceae, Cucurbitaceae and Euphorbiaceae families than other Figure 1 families.

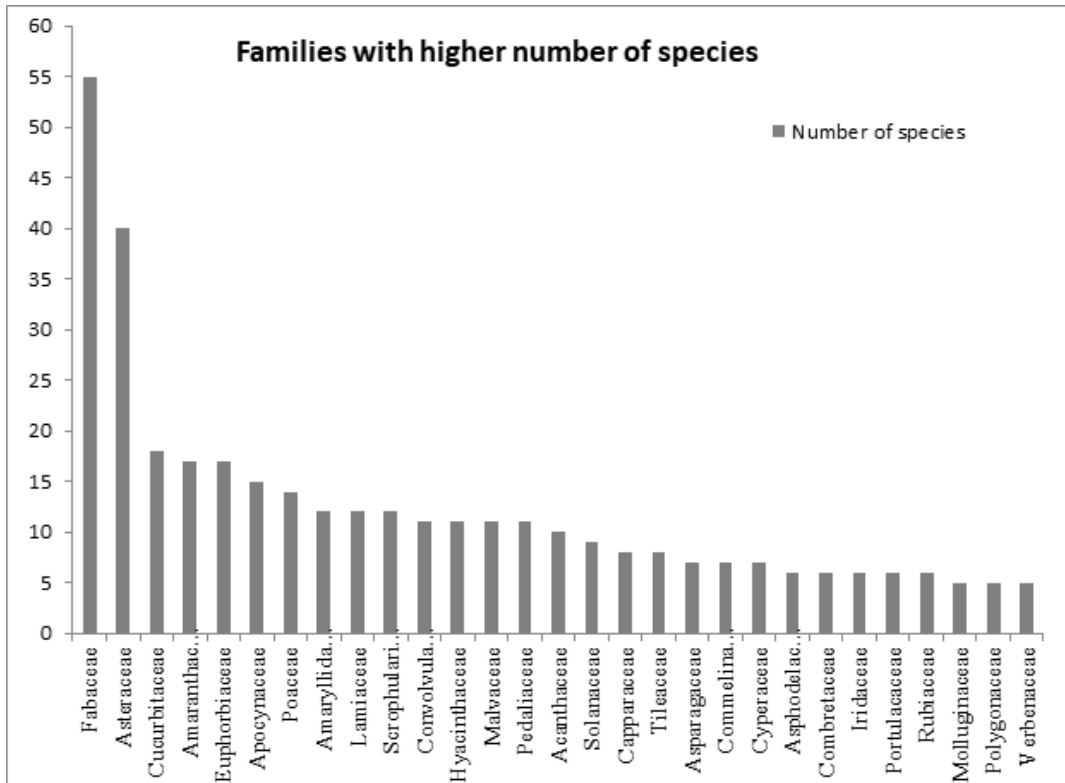


Figure 1: Number of species retrieved per family

Use of Plants

The condensed spread of the potential use of the sampled species (Appendix 1) is showcased in Figure 2. The results showed that 51.4% was exploited for food, thus edible. Some species were used for medicinal (17.8%), while 31.3% were used for both food and medicinal Figure 2 purposes. Among the five species identified for the in-depth study, there is a prevalent disproportion

ate bias towards the plant being edible and with considerable medicinal properties. Of the five species of interest, *Harpagophytum procumbens* is the only species reported to be beneficial for medicinal purpose only and not recommended for consumption. It is agreeable that the dual purpose of a species can thus, increase its vulnerability to overexploitation compared to a single use as in some species.

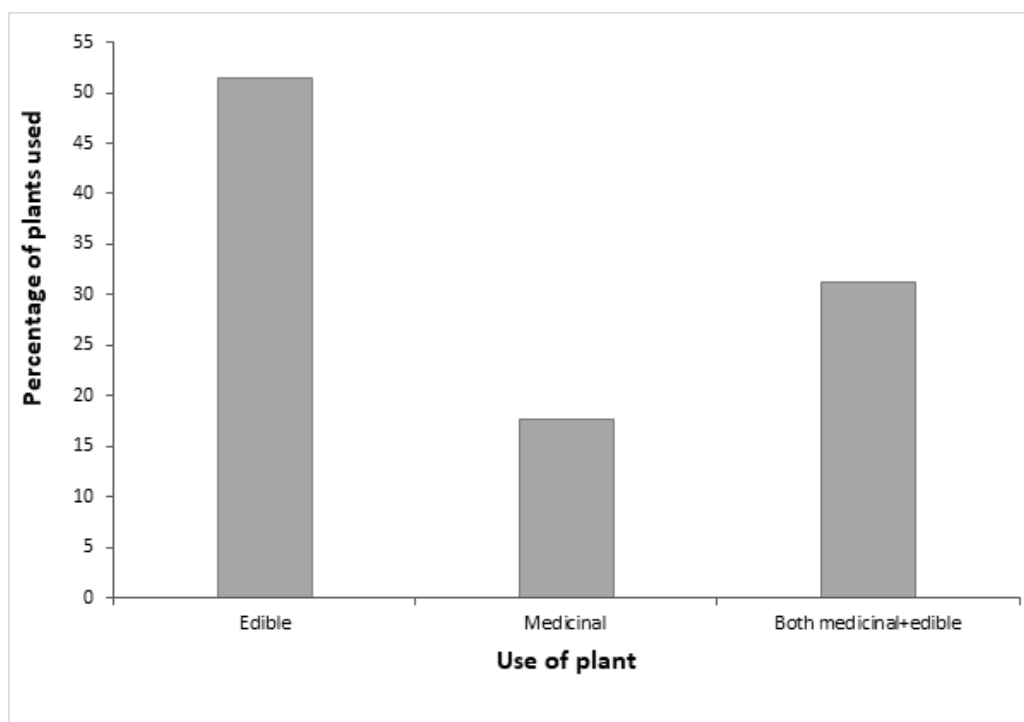


Figure 2: Recorded use of selected species

The burgeoning need to systematically record the utility provided by edible and medicinal wild flora is aptly justified by the rising global cognisance of the potential of Botswana's WEMP species. In the verge of seeking medicinal or edible benefits from floral species, different parts of the plant are utilised to extract the different desired benefits. The sampled species data in Figure 3 provides useful insights into the matter. In general,

the common part of the tree used is the root (48.63%), followed by whole plant (47.57%), leaves (38.48%) and fruits (19.45%). Within the roots, 42.28% of them are used for medicinal purposes rather than food. The use of plant part for medicine. seemed to be similar for other parts such as whole part, flowers, stem/branches, bark and leaves. However, only fruits and seeds were primarily used for food purposes than rather than medicinal.

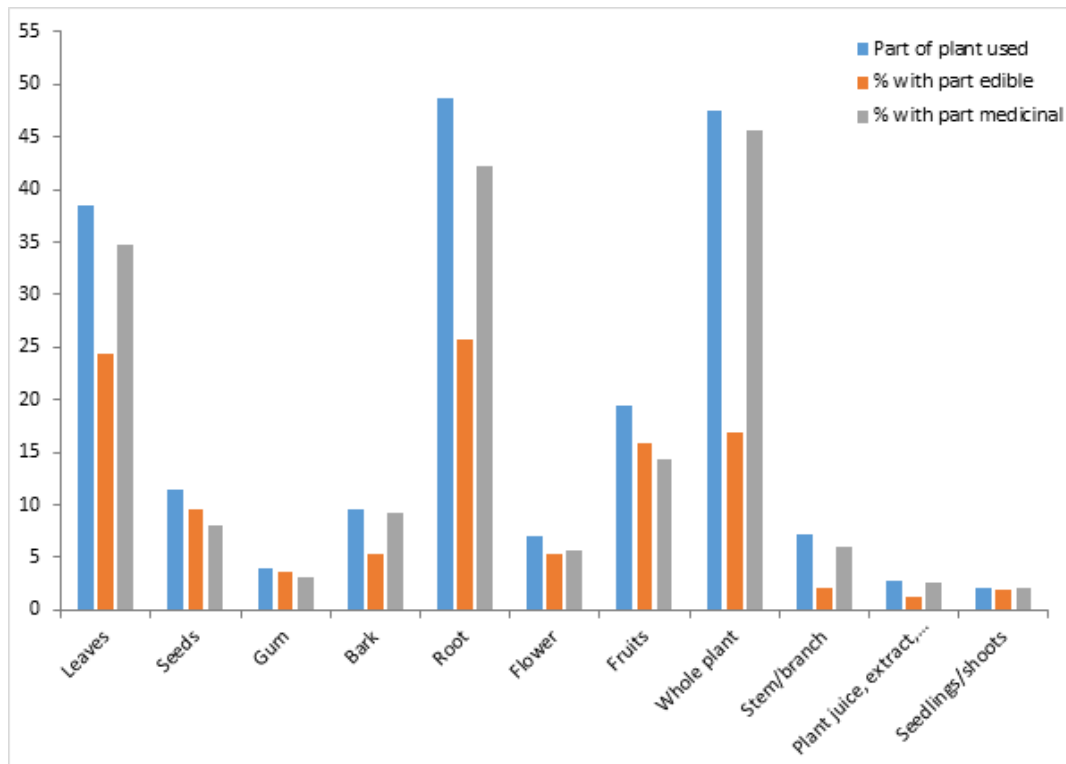


Figure 3: Parts of the plants used in the plant and its proportion used for medicinal or edible purposes

Consequently, overexploitation of these beneficial natural appendages of the plant could lead to a decrease in the individual plants' life cycle or could potentially pose a lethal threat to many species they are harvested from. For instance, harvesting the whole plant as mature or seedlings directly translates in cessation of that particular plant. Unsustainable harvesting of younger seedlings also translates to few or no replacements of older species in the community and exacerbated species loss. Similarly, harvesting roots potentially increases the species vulnerability to extinction since roots are the foundation of the plant. Unlike seasonal harvests in fruits, roots can be continuously harvested without a break. However, exploitation of fruits and leaves could pose less threat than harvesting the whole plant and roots. This reduced vulnerability may be attributed to the seasonality of these plant parts thus offering time for recory. Apart from having to wait for the next fruiting season, many trees could replace the leaves easily.

Botswanan government boasts its wildlife conservation policies. The wildlife protection department has implemented the Botswana Biodiversity Strategy and Action Plan (BSAP). The plan is aimed to achieve greater and wider protection for threatened and vulnerable species of plants and animals. The plan advocates that the government has declared over 45% of its land area as protected areas [3]. However, the protection is highly subjective, with greater preference allotted to species with more widely recognised visual and economic value. Lack of resources exacerbates the illegal harvesting situation [4]. Among the species selected, most of them fall under the least concerned category (LC) (Table 1), contributing to this study's concern that some of the species like *Harpagophytum procumbens* are not properly evaluated. The leaset concern category potentially encourages relevant authorities not to proactively catalyse conservation policy change as a way of protecting further deterioration of these species. In many instances conservation action is taken very late when species have reached very little numbers or seriously threatened.

Table 1: number of species falling into IUCN red list assesment categories

Conservation status	No. of species	% of species
Threatened	1	0.21
Least Concern	411	86.89
Not Evaluated	34	7.19
Vulnerable	1	0.21
Endangered	1	0.21
Not threatened	1	0.21
Information not availbale	24	5.07

As depicted in Figure 3, the common part used in many species is root and whole plant which this study argued the increased vulnerability to loss of individual of a particular species. For example, *Harpagophytum procumbens* propagates primarily through tubers and roots. The roots or tubers are utilised for their medicinal properties, hence are left incapacitated for reproduction with prolonged use. Leaves or the whole plant is utilized to extract the desired values in *Lippia javanica*. On the other hand, the natural propagation method for many plants such as *Cassine transvaalensis*, *Sclerocarya birrea*, *Berchemia discolor* is through their seeds. However, the seeds extracted or are encased in the fruits and are destroyed in the medicine or food extraction process. Therefore, prolonged use will render the species incapable of growth and maintaining genetic diversity. These mismatch in method of exploitation and use of these species might negatively impact growth and genetic diversity over time. As a results may of these species needs a higher level of conservation rather than least concern.

4. Conclusions and Recommendations

A three-phase conservation strategy is recommended for maintaining an adequate number of individual members of the species for its prolonged sustenance [5-8]. The first recommendation is to immediately prohibit and suspend all livestock grazing activities being conducted hitherto. The primary belief behind such a critical step is to allow the seedlings and saplings to grow without human intervention. Creeper species such as *Harpagophytum procumbens*' adult plants are also under constant threat. They are mostly affected by grazing as their stems and bodies are relatively easier to chew and digest than taller woody *Berchemia discolor* trees. Stem debarking, uprooting, leaf defoliation, and illegal logging or activities related to, thereof, should also be regulated and prohibited. Lastly, the gap generated by strict forest produce utilisation regulations can be filled by community forestry and environmentally friendly activities such as bee-keeping to uphold the local community's needs and reduce unnatural anthropological pressure.

The current level of international recognition of Botswanan flora for their medicinal and edible properties is growing steadily. However, the conservation of local species is severely undermined by inadequate data. Illegal activities are rampant with little or no government support in identifying the current state of most species that are not considered economical. Local extermination and/or extinction of most species will be imminent due to unchecked exploitation.

References

1. Wagh, V. V., & Jain, A. K. (2013). Status of threatened medicinal plants of Jhabua district, Madhya Pradesh, India. *Ann Plant Sci*, 2(10), 395-400.
2. Kumar, M., Sheikh, M. A., & Bussmann, R. W. (2011). Ethnomedicinal and ecological status of plants in Garhwal Himalaya, India. *Journal of Ethnobiology and Ethnomedicine*, 7(1), 1-13.
3. Botswana Government. (2009). Botswana Fourth National Report to the Convention of Biological Diversity.
4. Mohammed, E. M., Hamed, A. M., Ndakidemi, P. A., & Treydte, A. C. (2021). Illegal harvesting threatens fruit production and seedling recruitment of *Balanites aegyptiaca* in Dinder Biosphere Reserve, Sudan. *Global Ecology and Conservation*, 29, e01732.
5. Mohammed, E. M., Ndakidemi, P. A., & Treydte, A. C. (2021). Anthropogenic pressure on tree species diversity, composition, and growth of *Balanites aegyptiaca* in Dinder Biosphere Reserve, Sudan. *Plants*, 10(3), 483.
6. Daniel, M. M., & Shimane, W. M. (2011). Medicinal and edible wild fruit plants of Botswana as emerging new crop opportunities. *Journal of Medicinal Plants Research*, 5(10), 1836-1842.
7. Setshogo, M. P., & Mbereki, C. M. (2011). Floristic diversity and uses of medicinal plants sold by street vendors in Gaborone, Botswana.
8. Bello, A. A., & Jimoh, A. A. (2018). Some physical and mechanical properties of African birch (*Anogeissus leiocarpus*) timber. *Journal of Applied Sciences and Environmental Management*, 22(1), 79-84.

appendix

	A	B	D	E	F	G	H
	SPECIES	FAMILY	Conservation Status	PART USED	PART EDIBLE	MEDICINAL PART	HABIT
1							
2	<i>Hoslundia opposita</i> Vahl	Lamiaceae	Least Concern	Fruits	Fruit (Fr)	NIL	Herb (H)
3	<i>Plicosepalus kalachariensis</i> (Schinz) Danser	Loranthaceae	Least Concern	Whole plant	NIL	Whole plant (wp)	Shurb (S)
4	<i>Asparagus nelsii</i> Schinz	Asparagaceae	Least Concern	Roots, Whole plant	Whole plant (wp)	Root (Ro)	S
5	<i>Lapeirousia odoratissima</i> Baker	Iridaceae		Corms	Root (Ro)	NIL	H
6	<i>Kedrostis abdallai</i> A.Zimm.	Cucurbitaceae	Least Concern	Fruits	Fr	NIL	HH
7	<i>Cycnium tubulosum</i> (L.f.) Engl.	Scrophulariaceae	Motshe-wa-badimo	Roots	NIL	Ro	H
8	<i>Hermbstaedtia linearis</i> Schinz	Amaranthaceae	Mosiama, Xao, Xum	Flowers, Roots	NIL	Flower (Fl), Ro	H
9	<i>Dactyloctenium giganteum</i> B.S.Fisher & Schweick	Poaceae	Least Concern	Seeds	Seed (Se)	NIL	Grass (G)
10	<i>Echinochloa colona</i> (L.) Link	Poaceae	Least Concern	Seeds	Se	NIL	G
11	<i>Urochloa brachyura</i> (Hack.) Stapf	Poaceae	Least Concern	Seeds	Se	NIL	G
12	<i>Urochloa trichopus</i> (Hochst.) Stapf	Poaceae	Least Concern	Seeds	Se	NIL	G
13	<i>Ceratotheca sesamoides</i> Endl.	Pedaliaceae	Kgotodua	Seeds	Se	NIL	H
14	<i>Senecio strictifolius</i> Hiern	Asteraceae	Least Concern	Whole plant	NIL	wp	H
15	<i>Clematis brachiata</i> Thunb.	Ranunculaceae	Least Concern	Whole plants, Roots	NIL	wp, Ro	Climber (C)
16	<i>Cocculus hirsutus</i> (L.) Diels	Menispermaceae	Not Evaluated	Fruits, Whole plant	Fr	wp	C
17	<i>Kedrostis africana</i> (L.) Cogn.	Cucurbitaceae	Least Concern	Whole plant	NIL	wp	C
18	<i>Lagenaria sphaerica</i> (Sond.) Naud.	Cucurbitaceae	Least Concern	Leaves, Root, Fruit	NIL	Leaves (Le), Ro, Fr	C
19	<i>Pentarrhinum insipidum</i> E.Mey.	Apocynaceae	Least Concern	Leaves, Stems, Fruits, Flowers	Le, St, Fr, Flower (Fl)	NIL	C
20	<i>Pergularia daemia</i> (Forsk.) Chiov. var. <i>daemia</i>	Apocynaceae	Least Concern	Whole plant, Roots, Leaves	Leaves (Le)	Ro, Le, wp	C
21	<i>Rhoicissus tridentata</i> (L.f.) Wild & R.B.Drumm.	Vitaceae	Least Concern	Whole plant	NIL	wp	C
22	<i>Sarcostemma viminale</i> (L.) R.Br. subsp. <i>viminale</i>	Apocynaceae	Least Concern	Fruits, Stems, Whole plant	Stem (st), Fr	Seed (Se), wp	C
23	<i>Secamone parvifolia</i> (Oliv.) Bullock	Apocynaceae	Least Concern	Roots	NIL	Ro	C
24	<i>Fragia okanyua</i> Pax	Euphorbiaceae	Least Concern	Seeds, Roots, Whole plant, Fruits	NIL	Se, Ro, wp, Fruit (Fr)	C
25	<i>Cissus quadrangularis</i> L. var. <i>quadrangularis</i>	Vitaceae	Least Concern	Whole plant	NIL	wp	C, Succulent (Su)
26	<i>Cucumis anguira</i> L.	Cucurbitaceae	Least Concern	Leaf, Fruit	Le, Fr	NIL	C, Creeper (Cr)
27	<i>Cucumis meluliferus</i> E.Mey. ex Naudin	Cucurbitaceae	Least Concern	fruit,leaves,root	Fr, Le	Ro	C
28	<i>Gloriosa superba</i> L.	Colchicaceae	Least Concern	Bulb, Root, Leaves, Plant Sa	NIL	Ro, Le, Sap (Sa)	C
29	<i>Melanthera scandens</i> (Schumach. & Thonn.) Roberty	Compositae		Leaves, Whole plant	NIL	Le, wp	C, H
30	<i>Vigna luteola</i> (Jacq.) Benth	Fabaceae	Least Concern	Roots, Leaves, Whole plant	NIL	Ro, Le, wp	C, H
31	<i>Coccinia sessilifolia</i> (Sond.) Cogn	Cucurbitaceae	Least Concern	Tuber/Roots, Fruit	Ro, Fr	NIL	C, H
32	<i>Coccinia rehmannii</i> Cogn.	Cucurbitaceae	Least Concern	Tubers, Stems, Fruit, Leaves	Ro, St, Fr, Le	NIL	C, H
33	<i>Plumbago zeylanica</i> L.	Plumbaginaceae	Not Evaluated	leaves,roots,twigs	NIL	Le,Ro, Stem (St)	C, S
34	<i>Loeseneriella africana</i> (Willd.) N.Halle var. <i>richadiana</i>	Celastraceae	Least Concern	whole plant, Ba	NIL	wp	C,S
35	<i>Barleria mackenii</i> Hook.f.	Acanthaceae	Least Concern	Wood	NIL	St	H
36	<i>Acanthosicyos naudinianus</i> (Sond.) C.Jeffrey	Cucurbitaceae	Least Concern	Fruits, Seeds, Tubers, Roots	Fr, Se, Ro	Ro	Cr
37	<i>Harpagophytum procumbens</i> subsp. <i>Procumbens</i>	Pedaliaceae	Not Evaluated	Tubers, Roots	NIL	Ro	Cr, H
38	<i>Orthanthera jasmiflora</i> (Decne.) Schnz	Apocynaceae	Least Concern	Leaves, Fruits, Roots, Seeds	Le, Fr, Se, Ro	Ro, Fr	Cr
39	<i>Citrullus lanatus</i> (Thunb.) Matsum. & Nakai	Cucurbitaceae	Least Concern	Seeds, Fruits, Leaves, Whole plant	Le, Fr, Se	wp,	H, Cr, H, Cl
40	<i>Neptunia oleracea</i> Lour.	Fabaceae	Least Concern	Leaves, Whole plant	Le	wp	Cr, H
41	<i>Commiphora mossambicensis</i> (Oliv.) Engl.	Burseraceae	Moroka	Ba ash	NIL	Bark (Ba)	T
42	<i>Commiphora edulis</i> (Klotzsch) Engl. subsp. <i>edulis</i>	Burseraceae	Least Concern	Fruits	NIL	Fr	T, S
43	<i>Ansellia africana</i> Lindl. subsp. <i>Africana</i>	Orchidaceae	Vulnerable	Bulb, Stem	NIL	Ro, St	H
44	<i>Senna obtusifolia</i> (L.) H.S.Irwin & Barneby	Fabaceae	Least Concern	Whole plant	NIL	wp	H
45	<i>Amaranthus graecizans</i> L.	Amaranthaceae	Not Evaluated	leaves	Le	NIL	H
46	<i>Nymphoides indica</i> (L.) Kuntze subsp. <i>occidentalis</i> A.Raynal	Menyanthaceae	Least Concern	Roots	NIL	Ro	H
47	<i>Melhania forbesii</i> Mast.	Sterculiaceae	Least Concern	Whole plant	wp	NIL	S
48	<i>Cyperus esculentus</i> L.	Cyperaceae	Least Concern	Tubers	Ro	NIL	Sedge (Se)
49	<i>Nymphoides forbesiana</i> (Griseb.) Kuntze	Menyanthaceae	Least Concern	Roots	Ro	NIL	H
50	<i>Nymphaea nouchali</i> Burm. f. var. <i>caerulea</i>	Nymphaeaceae	Least Concern	Root,Fruits,Stem,Flowers,Leaves,Seeds	Ro, Fr, Fl, Se	Ro, St, Le, Fl, St	H
51	<i>Albica setosa</i> Jacq.	Hyacinthaceae	Least Concern	Bulbs	NIL	Ro	Geophyte (Ge)
52	<i>Brunsvigia radulosa</i> Herb.	Amaryllidaceae	Least Concern	Whole plant	NIL	wp	Ge
53	<i>Crinum crassaule</i> Baker (=Crinum foetidum I.Verd.)	Amaryllidaceae	Least Concern	Whole plant	NIL	wp	Ge
54	<i>Crinum lugardiae</i> N.E.Br.	Amaryllidaceae	Least Concern	Whole plant	NIL	wp	Ge
55	<i>Crinum macowanii</i> Baker	Amaryllidaceae	Least Concern	Bulbs, Whole plant	NIL	Ro, wp	Ge
56	<i>Dipcadi marlothii</i> Engl.	Hyacinthaceae	Least Concern	Bulb, Whole plant	Ro	wp	Ge
57	<i>Dipcadi viride</i> (L.) Moench	Hyacinthaceae	Least Concern	Bulbs, Leaves, Whole plant	Ro, Le	wp	Ge
58	<i>Drimia altissima</i> (L.f.) Kef Gawl. (=Urginea altissima (L.f.) Bak)	Hyacinthaceae	Least Concern	Whole plant	NIL	wp	Ge
59	<i>Drimia sanguinea</i> (Schinz) Jessop (=Urginea sanguinea Schinz)	Hyacinthaceae	Not Threatened	Bulbs	NIL	Ro	Ge
60	<i>Drimiopsis burkei</i> Baker subsp. <i>burkei</i>	Hyacinthaceae	Least Concern	Whole plant	NIL	wp	Ge
61	<i>Eriospermum flagelliforme</i> (Baker) J.C.Manning	Eriospermeaceae	Least Concern	Roots, Ba, Whole plant	NIL	Ro, Ba, wp	Ge
62	<i>Eucomis autumnalis</i> (Mill.) Chitt. subsp. <i>clavata</i> (Baker) Reyneke	Hyacinthaceae	Least Concern	Bulb enema, Whole plant	NIL	Ro, wp	Ge
63	<i>Hypoxis hemerocallidea</i> Fisch., C.A.Mey. & Ave-Lall.	Hypoxidaceae	Least Concern	Whole plant	NIL	wp	Ge

64	<i>Hypoxis iridifolia</i> Baker	Hypoxidaceae	Least Concern	Corms	Ro	NIL	Ge
65	<i>Ledebouria revoluta</i> (L.f.) Jessop	Hyacinthaceae	Least Concern	Whole plant	NIL	wp	Ge
66	<i>Ophioglossum polyphyllum</i> A.Braun	Ophioglossaceae	Least Concern	Leaves, Whole plant	Le, wp	NIL	Ge
67	<i>Ornithogalum seineri</i> (Engl. & Krause) Oberm.	Hyacinthaceae	Least Concern	Whole plant	NIL	wp	Ge
68	<i>Ornithogalum tenuifolium</i> F.Delaroche subsp. <i>Tenuifolium</i>	Hyacinthaceae	Least Concern	Whole plant, Bulb	Ro	wp	Ge
69	<i>Ornithoglossum viride</i> (L.f.) Aiton	Colchicaceae	Least Concern	Bulb, Nectar	Ro, Fl	NIL	Ge
70	<i>Oxalis obliquifolia</i> Steud. ex A.Rich	Oxalidaceae	Least Concern	Leaves, Roots	Le, Ro	NIL	Ge
71	<i>Oxalis semiloba</i> Sond. subsp. <i>semiloba</i>	Oxalidaceae	Least Concern	Leaves, Fowers, Bulbs, Whole plant	Le, Fl, Ro	wp	Ge
72	<i>Pancratium tenuifolium</i> Hotchst. ex A.Rich.	Amaryllidaceae	Least Concern	Bulb	NIL	Ro	Ge
73	<i>Schizocarpus nervosus</i> (Burch.) Van der Merwe	Hyacinthaceae	Least Concern	Whole plant	NIL	wp	Ge
74	<i>Trachyandra saltii</i> (Baker) Oberm. var. <i>saltii</i>	Asphodelaceae	Least Concern	Whole plant	NIL	wp	Ge
75	<i>Ammocharis coranica</i> (Ker Gawl.) Herb.	Amaryllidaceae	Least Concern	Bulb scales	NIL	Ro	Ge
76	<i>Boophane disticha</i> (L.f.) Herb.	Amaryllidaceae	Least Concern	Bulb scales, Bulb	NIL	Ro	Ge
77	<i>Nerine laticoma</i> (Ker Gawl.) T.Dur and Schinz	Amaryllidaceae	Least Concern	Whole plant, Bulb peal	NIL	wp, Ro	Ge
78	<i>Scadoxus multiflorus</i> (Martyn) Raf.	Amaryllidaceae	Least Concern	Bulb, Flower, Roots	NIL	Ro, Fl, Ro	Ge
79	<i>Scadoxus puniceus</i> (L.) Friis & Norda	Amaryllidaceae	Least Concern	Whole plant	NIL	wp	Ge
80	<i>Echinochloa pyramidalis</i>	Poaceae	Least Concern	Seeds	Se	NIL	G
81	<i>Eragrostis cilianensis</i>	Poaceae	Least Concern	Seeds	Se	NIL	G
82	<i>Heteropogon contortus</i>	Poaceae	Least Concern	Whole plant	NIL	wp	G
83	<i>Imperata cylindrica</i>	Poaceae	Least Concern	Underground stem	St	NIL	G
84	<i>Phragmites australis</i>	Poaceae	Least Concern	Rootstock, Seeds	Ro	Se	G
85	<i>Pogonarthria squarrosa</i>	Poaceae	Least Concern	Roots	NIL	Ro	G
86	<i>Sporobolus fimbriatus</i>	Poaceae	Least Concern	Seeds	Se	NIL	G
87	<i>Bergia pentheriana</i> Kiessl	Elatinaceae	Least Concern	Roots	NIL	Ro	Cr
88	<i>Tephrosia lupinifolia</i> Baker f.	Fabaceae	Least Concern	Roots	NIL	Ro	Cr
89	<i>Amaranthus thunbergii</i> Moq.	Amaranthaceae	Least Concern	Leaves, Seeds, Whole plant	Le, Se	wp	H
90	<i>Aptosimum procumbens</i> (Lehm.) Steud.	Scrophulariaceae	Least Concern	Roots	NIL	Ro	H
91	<i>Argemone mexicana</i> L. forma <i>mexicana</i>	Papaveraceae	Not Evaluated	Whole plant	NIL	wp	H
92	<i>Barleria macrostegia</i> Nees	Acanthaceae	Least Concern	Whole plant	NIL	wp	H
93	<i>Berkheya radula</i> (Harv.) De Wild.	Asteraceae	Least Concern	Leaves	Le	NIL	H
94	<i>Boerhavia diffusa</i> L. var. <i>diffusa</i>	Nyctaginaceae	Not Evaluated	Leaves, Roots	Le, Ro	Ro	H
95	<i>Chamaecrista mimosoides</i> (L.) Greene	Fabaceae	Least Concern	Leaves, Roots, Whole plant	NIL	Le, Ro, wp	H
96	<i>Chascanum pinnatifidum</i> (L.f.) E.Mey. var. <i>pinnatifidum</i>	Verbenaceae	Least Concern	Roots, Leaves	NIL	Ro, Le	H
97	<i>Chenopodium ambrosioides</i> L.	Chenopodiaceae	Not Evaluated	Whole plant	NIL	wp	H
98	<i>Chlorophytum fasciculatum</i> (Baker) Kativu	Anthericaceae	Least Concern	Whole plant	NIL	wp	H
99	<i>Chlorophytum galpinii</i> (Baker) Kativu var. <i>galpinii</i>	Anthericaceae	Least Concern	Whole plant	NIL	wp	H
67	<i>Ornithogalum seineri</i> (Engl. & Krause) Oberm.	Hyacinthaceae	Least Concern	Whole plant	NIL	wp	Ge
68	<i>Ornithogalum tenuifolium</i> F.Delaroche subsp. <i>Tenuifolium</i>	Hyacinthaceae	Least Concern	Whole plant, Bulb	Ro	wp	Ge
69	<i>Ornithoglossum viride</i> (L.f.) Aiton	Colchicaceae	Least Concern	Bulb, Nectar	Ro, Fl	NIL	Ge
70	<i>Oxalis obliquifolia</i> Steud. ex A.Rich	Oxalidaceae	Least Concern	Leaves, Roots	Le, Ro	NIL	Ge
71	<i>Oxalis semiloba</i> Sond. subsp. <i>semiloba</i>	Oxalidaceae	Least Concern	Leaves, Fowers, Bulbs, Whole plant	Le, Fl, Ro	wp	Ge
72	<i>Pancratium tenuifolium</i> Hotchst. ex A.Rich.	Amaryllidaceae	Least Concern	Bulb	NIL	Ro	Ge
73	<i>Schizocarpus nervosus</i> (Burch.) Van der Merwe	Hyacinthaceae	Least Concern	Whole plant	NIL	wp	Ge
74	<i>Trachyandra saltii</i> (Baker) Oberm. var. <i>saltii</i>	Asphodelaceae	Least Concern	Whole plant	NIL	wp	Ge
75	<i>Ammocharis coranica</i> (Ker Gawl.) Herb.	Amaryllidaceae	Least Concern	Bulb scales	NIL	Ro	Ge
76	<i>Boophane disticha</i> (L.f.) Herb.	Amaryllidaceae	Least Concern	Bulb scales, Bulb	NIL	Ro	Ge
77	<i>Nerine laticoma</i> (Ker Gawl.) T.Dur and Schinz	Amaryllidaceae	Least Concern	Whole plant, Bulb peal	NIL	wp, Ro	Ge
78	<i>Scadoxus multiflorus</i> (Martyn) Raf.	Amaryllidaceae	Least Concern	Bulb, Flower, Roots	NIL	Ro, Fl, Ro	Ge
79	<i>Scadoxus puniceus</i> (L.) Friis & Norda	Amaryllidaceae	Least Concern	Whole plant	NIL	wp	Ge
80	<i>Echinochloa pyramidalis</i>	Poaceae	Least Concern	Seeds	Se	NIL	G
81	<i>Eragrostis cilianensis</i>	Poaceae	Least Concern	Seeds	Se	NIL	G
82	<i>Heteropogon contortus</i>	Poaceae	Least Concern	Whole plant	NIL	wp	G
83	<i>Imperata cylindrica</i>	Poaceae	Least Concern	Underground stem	St	NIL	G
84	<i>Phragmites australis</i>	Poaceae	Least Concern	Rootstock, Seeds	Ro	Se	G
85	<i>Pogonarthria squarrosa</i>	Poaceae	Least Concern	Roots	NIL	Ro	G
86	<i>Sporobolus fimbriatus</i>	Poaceae	Least Concern	Seeds	Se	NIL	G
87	<i>Bergia pentheriana</i> Kiessl	Elatinaceae	Least Concern	Roots	NIL	Ro	Cr
88	<i>Tephrosia lupinifolia</i> Baker f.	Fabaceae	Least Concern	Roots	NIL	Ro	Cr
89	<i>Amaranthus thunbergii</i> Moq.	Amaranthaceae	Least Concern	Leaves, Seeds, Whole plant	Le, Se	wp	H
90	<i>Aptosimum procumbens</i> (Lehm.) Steud.	Scrophulariaceae	Least Concern	Roots	NIL	Ro	H
91	<i>Argemone mexicana</i> L. forma <i>mexicana</i>	Papaveraceae	Not Evaluated	Whole plant	NIL	wp	H
92	<i>Barleria macrostegia</i> Nees	Acanthaceae	Least Concern	Whole plant	NIL	wp	H
93	<i>Berkheya radula</i> (Harv.) De Wild.	Asteraceae	Least Concern	Leaves	Le	NIL	H
94	<i>Boerhavia diffusa</i> L. var. <i>diffusa</i>	Nyctaginaceae	Not Evaluated	Leaves, Roots	Le, Ro	Ro	H
95	<i>Chamaecrista mimosoides</i> (L.) Greene	Fabaceae	Least Concern	Leaves, Roots, Whole plant	NIL	Le, Ro, wp	H
96	<i>Chascanum pinnatifidum</i> (L.f.) E.Mey. var. <i>pinnatifidum</i>	Verbenaceae	Least Concern	Roots, Leaves	NIL	Ro, Le	H

97	<i>Chenopodium ambrosioides</i> L.	Chenopodiaceae	Not Evaluated	Whole plant	NIL	wp	H
98	<i>Chlorophytum fasciculatum</i> (Baker) Katiyu	Anthericaceae	Least Concern	Whole plant	NIL	wp	H
99	<i>Chlorophytum galpinii</i> (Baker) Katiyu var. <i>galpinii</i>	Anthericaceae	Least Concern	Whole plant	NIL	wp	H
100	<i>Chlorophytum recurvifolium</i> (Baker) C.Archer & Katiyu	Anthericaceae	Least Concern	Whole plant	NIL	wp	H
101	<i>Cleome maculata</i> (Sond.) Szyszyl.	Capparaceae	Least Concern	Leaves	Le	NIL	H
102	<i>Cleome oxyphylla</i> Burch. var. <i>oxyphylla</i>	Capparaceae	Least Concern	Leaves	Le	NIL	H
103	<i>Commelina erecta</i> L.	Commelinaceae	Least Concern	Whole plant	NIL	wp	H
104	<i>Corbichonia decumbens</i> (Forssk.) Exell	Molluginaceae	Least Concern	Leaves, Root, Whole plant	Le	Ro, wp	H
105	<i>Corchorus asplenifolius</i> Burch.	Tiliaceae	Least Concern	Leaves, Roots, Whole plant	Le	Ro, wp	H
106	<i>Cotula anthemoides</i> L.	Asteraceae	Least Concern	Leaves, Roots, Whole plant	Le	Le, Ro, wp	H
107	<i>Crabbea angustifolia</i> Nees	Acanthaceae	Least Concern	Whole plant	NIL	wp	H
108	<i>Cucumis hirsutus</i> Sond.	Cucurbitaceae	Least Concern	Fruits, Leaves, Roots	Le, Fr	Ro	H
109	<i>Cucumis myriocarpus</i> Naud. subsp. <i>myriocarpus</i>	Cucurbitaceae	Least Concern	Leaves, Whole plant	Le	wp	H
110	<i>Cucumis zeyheri</i> Sond.	Cucurbitaceae	Least Concern	Leaves, Whole plant	Le	wp	H
111	<i>Cyanotis speciosa</i> (L.f.) Hassk.	Commelinaceae	Least Concern	Leaves, Roots, Whole plant	Le	Ro, wp	H
112	<i>Diclis reptans</i> Benth.	Scrophulariaceae	Least Concern	Whole plant	wp	NIL	H
113	<i>Euphorbia heterophylla</i> L.	Euphorbiaceae	Not Evaluated	Leaves	NIL	Le	H
114	<i>Flaveria bidentis</i> (L.) Kuntze	Asteraceae	Not Evaluated	Whole plant	NIL	wp	H
115	<i>Gazania krebsiana</i> Less. subsp. <i>serrulata</i> (DC.) Roessler	Asteraceae	Least Concern	Flowers, Whole plant	Fl	wp	H
116	<i>Geigeria burkei</i> Harv. subsp. <i>burkei</i> var. <i>zeheri</i> (Harv) Merxm.	Asteraceae	Not Evaluated	Roots	NIL	Ro	H
117	<i>Gisekia pharnacioides</i> L. var. <i>pharnacioides</i>	Gisekiaceae	Least Concern	Leaves, Stems	Le, St	NIL	H
118	<i>Gladiolus permeabilis</i> D.Delaroche subsp. <i>Edulis</i>	Iridaceae	Least Concern	Corms	Ro	Ro	H
119	<i>Helichrysum cerastioides</i> DC. var. <i>cerastioides</i>	Asteraceae	Least Concern	Leaves, Whole plant	NIL	Le, wp	H
120	<i>Hermestaedia fleckii</i> (Schinz) Baker & C.B.Clarke	Amaranthaceae	Least Concern	Leaves, Whole plant	Le	wp	H
121	<i>Hibiscus cannabinus</i> L.	Malvaceae	Least Concern	Leaves, Roots	NIL	Le, Ro	H
122	<i>Hibiscus lunarifolius</i> Willd.	Malvaceae	Least Concern	Leaves, Stems	NIL	Le, St	H
123	<i>Hibiscus trionum</i> L.	Malvaceae	Delele-kwakwa	Whole plant	NIL	wp	H
124	<i>Hypericum lalandii</i> Choisy	Hypericaceae	Least Concern	Whole plant	NIL	wp	H
125	<i>Indigofera daleoides</i> Benth. ex Harv. var. <i>daleoides</i>	Fabaceae	Not Evaluated	Whole plant	NIL	wp	H
126	<i>Ipomoea crassipes</i> Hook.	Convolvulaceae	Least Concern	Roots, Whole plant	Ro	wp	H
127	<i>Ipomoea obscura</i> (L.) Ker Gawl. var. <i>obscura</i>	Convolvulaceae	Least Concern	Leaves, Whole plant	Le	wp	H
128	<i>Kohautia caespitosa</i> Schinzii. subsp. <i>brachyloba</i> (Sond.) D.Man	Rubiaceae	Least Concern	Bulb-like roots	Ro	NIL	H
129	<i>Lobelia erinus</i> L.	Lobeliaceae	Least Concern	Whole plant, Roots, Leaves	Sh	Le, Ro, wp	H
130	<i>Mimulus gracilis</i> R.Br.	Scrophulariaceae	Least Concern	Whole plant	NIL	wp	H
131	<i>Mollugo cerviana</i> (L.) Ser. ex DC. var. <i>cerviana</i>	Molluginaceae	Least Concern	Whole plant, Leaves	NIL	wp, Le	H
132	<i>Oldenlandia herbacea</i> (L.) Roxb. var. <i>herbacea</i>	Rubiaceae	Least Concern	Stem, Leaves, Roots, Plant Sa	NIL	St, Le, Ro, Sa	H
133	<i>Oxalis corniculata</i> L.	Oxalidaceae	Not Evaluated	Flowers, Leaves, Whole plant	Fl, Le	wp	H
134	<i>Oxygonum dregeanum</i> Meisn. subsp. <i>lanceolatum</i> Germishuizen	Polygonaceae	Least Concern	Leaves, Roots, Fruits	NIL	Le, Ro, Fr	H
135	<i>Pavonia senegalensis</i> (Cav.) Leistner	Malvaceae	Least Concern	Whole plant	NIL	wp	H
136	<i>Persicaria laphatifolia</i> (L.) Gray	Polygonaceae	Least Concern	Whole plant	NIL	wp	H
137	<i>Philyrophyllum schinzii</i> O. Hoffm.	Asteraceae	Least Concern	Whole plant	NIL	wp	H
138	<i>Phyla nodiflora</i> (L.) Greene	Verbenaceae	Least Concern	Leaves, Whole plant	Le	wp, Le, St	H
139	<i>Plectranthus cylindraceus</i> Hochst. ex Benth.	Lamiaceae	Least Concern	Leaves, Stem,	Le	Le, St	H
140	<i>Portulaca oleracea</i> L.	Portulacaceae	Least Concern	Leaves	Le	NIL	H
141	<i>Ranunculus multifidus</i> Forssk.	Ranunculaceae	Least Concern	Whole plant	NIL	wp	H
142	<i>Rumex lanceolatus</i> Thunb.	Polygonaceae	Least Concern	Leaves, Roots, Whole plant	Le	Ro, wp	H
143	<i>Scabiosa columbaria</i> L.	Dipsacaceae	Least Concern	Roots, Whole plant	NIL	Ro, wp	H
144	<i>Schkuhria pinnata</i> (Lam.) Cabrera	Asteraceae	Not Evaluated	Leaves, Whole plant	NIL	Le, wp	H
145	<i>Senecio latifolius</i> DC.	Asteraceae	Least Concern	Roots, Whole plant	NIL	Ro, wp	H
146	<i>Senecio venosus</i> Harv.	Asteraceae	Least Concern	Leaves, Stems	Le, St	Le	H
147	<i>Sesamum alatum</i> Thonn.	Pedaliaceae	Least Concern	Seeds, Whole plant	Se	wp	H
148	<i>Sonchus oleraceus</i> L.	Asteraceae	Not Evaluated	Young Leaves, Whole plant	Le	wp	H
149	<i>Tagetes minuta</i> L.	Asteraceae	Not Evaluated	Leaves, Whole plant	NIL	Le, wp	H
150	<i>Tricliceras longepedunculatum</i> (Mastt.) R.Fern. var. <i>longependunc</i>	Turneraceae	Least Concern	Roots	NIL	Ro	H
151	<i>Tridax procumbens</i> L.	Asteraceae	Not Evaluated	Roots	NIL	Ro	H
152	<i>Tulbaghia acutiloba</i> Harv.	Alliaceae	Least Concern	Whole plant	wp	NIL	H
153	<i>Tulbaghia leucantha</i> Baker	Alliaceae	Least Concern	Whole plant (ash)	NIL	wp	H
154	<i>Verbesina encelioides</i> (Cav.) Benth. & Hook. var. <i>encelioides</i>	Asteraceae	Not Evaluated	Whole plant	NIL	wp	H
155	<i>Vernonia oligocephala</i> (DC.) Sch.Bip. ex Walp.	Asteraceae	Least Concern	Leaves, Flowers, Whole plant	NIL	Le, Fl, wp	H
156	<i>Wahlenbergia undulata</i> (L.f.) A.DC.	Campanulaceae	Least Concern	Leaves, Whole plant	Le	wp	H
157	<i>Xerophyta retinervis</i> Baker	Velloziaceae	Least Concern	Roots, Whole plant	NIL	Ro, wp	H
158	<i>Dicoma anomala</i> Sond. subsp. <i>anomala</i>	Asteraceae	Least Concern	Leaves, Roots, Whole plant	Le	Ro, wp	H
159	<i>Coccinia adoensis</i> (A.Rich.) Cogn.	Cucurbitaceae	Least Concern	Fruits, Leaves, Roots	Fr, Le	Ro	H, C
160	<i>Ipomoea carica</i> (L.) Sweet	Convolvulaceae	Least Concern	Whole plant	NIL	wp	H, C
161	<i>Kedrostis foetidissima</i> (Jacq.) Cogn.	Cucurbitaceae	Least Concern	Leaves, Roots, Whole plant	Le	Ro, Le	H, C
162	<i>Neorautanenia ficifolia</i> (Benth.) C.A.Sm.	Fabaceae	Least Concern	Whole plant	NIL	wp	H, C

163	Rhynchosia minima (L.) DC. var. prostrata (Harv.) Meikle	Fabaceae	Least Concern	Stems, Leaves	NIL	St, Le	H, C
164	Rhynchosia totta (Thunb.) DC. var. totta	Fabaceae	Least Concern	Roots, Tubers, Stems, Leaves	Ro	St, Le	H, C
165	Trochomeria debilis (Sond.) Hook.f.	Cucurbitaceae	Least Concern	Fruits, Roots	Fr, Ro	NIL	H, C
166	Trochomeria macrocarpa (Sond.) Hook. f. subsp. macrocarpa	Cucurbitaceae	Least Concern	Roots	Ro	NIL	H, C
167	Aponogeton junceus Lehm. ex Schlecht. Subsp. Rehmannii (Oliv.)	Aponogetonaceae	Least Concern	Flower & Flower buds, Leaves, Tubers	Fl, Le, Ro	NIL	H, Ge
168	Babiana hypogaea Burch. var. hypogaea	Iridaceae	Least Concern	Corms, Bulbs	Ro	Ro	H, Ge
169	Lapeirousia sandersonii Baker.	Iridaceae	Least Concern	Corms	Ro	NIL	H, Ge
170	Commelina subulata Roth	Commelinaceae	Least Concern	Whole plant	NIL	wp	H, Helophyte (He)
171	Dicliptera clinopodia Nees	Acanthaceae	Least Concern	Leaves	Le	NIL	H, S
172	Gomphocarpus tomentosus Burch. subsp. Tomentosus	Apocynaceae	Least Concern	Whole plant	NIL	wp	H, S
173	Polygala hottentotta C.Presl	Polygalaceae	Least Concern	Roots, Whole plant	NIL	Ro, wp	H, S
174	Sida dregei Burt Davy	Malvaceae	Least Concern	Leaves	NIL	Le	H, S
175	Solanum delagoense Dunal (= Solanum panduriforme E.Mey.)	Solanaceae	Moralwana, Moralwana	Whole plant, Roots, Fruits	NIL	wp, Ro, Fr	H, S
176	Tephrosia longipes Meisn. subsp. longipes var. longipes	Fabaceae	Not Evaluated	Roots	NIL	Ro	H, S
177	Holubia saccata Oliv.	Pedaliaceae	Least Concern	Whole plant	NIL	wp	H, Su
178	Portulaca quadrifida L.	Portulacaceae	Least Concern	Leaves, Whole plant	wp	wp, Le	H, Su
179	Pterodiscus ngamicus N.E.Br. ex Stapf	Pedaliaceae	Least Concern	Rootstock, Whole plant	NIL	Rotock, wp	H, Su
180	Bulbine abyssinica A.Rich.	Asphodelaceae	Least Concern	Whole plant	NIL	wp	H, Su
181	Bulbine angustifolia Poelln. (=Bulbine tortifolia I.Verd.)	Asphodelaceae	Least Concern	Leaves	NIL	Le	H, Su
182	Bulbine capitata Poelln.	Asphodelaceae	Least Concern	Whole plant	NIL	wp	H, Su
183	Bulbine narcissifolia Salm-Dyck	Asphodelaceae	Least Concern	Whole plant	NIL	wp	H, Su
184	Achyranthes aspera var. aspera* (=A. aspera var. obtusifolia) (L.)	Amaranthaceae	Not Evaluated	Leaves, Roots, Whole plant	Le	Le, wp, Ro, Sa	H, Su
185	Acrotome inflata Benth.	Lamiaceae	Least Concern	Leaves, Flowers, Fruits, Roots	Fl	Le, Fl, Fr, Ro	H
186	Adenostemma cafferum	Compositae	Least Concern	Whole plant	NIL	wp	H
187	Aerva leucura Moq.	Amaranthaceae	Least Concern	Leaves, Whole plant, Roots, Flowers	Le	Ro, Le, Fl, Ro, wp	H
188	Alternanthera pungens Kunth	Amaranthaceae	Not Evaluated	Leaves, Roots	NIL	Le, Ro	H
189	Alternanthera sessilis	Amaranthaceae	Least Concern	Leaves, Whole plant	Le	wp	H
190	Aneilema hockii De Wild.	Commelinaceae	Least Concern	Roots	NIL	Ro	H
191	Boerhavia coccinea Mill. (syn. Boerhavia diffusa)	Nyctaginaceae	Least Concern	Leaves, Roots, Seeds	Le, Ro, Se	Ro	H
192	Celosia trigynia L.	Amaranthaceae	Least Concern	Young shoots, leaves	Sh, Le	Le	H
193	Ceratotheca triloba (Berth.) Hook.f.	Pedaliaceae	Least Concern	Leaves, Young shoots, Roots, Whole plant	Le, Sh	Ro, Le, wp	H
194	Cleome angustifolia Forssk. subsp. Petersiana (Klotzsch ex Sond.)	Capparaceae	Least Concern	Whole plant	NIL	wp	H
195	Cleome gynandra L.	Capparaceae	Least Concern	Leaves, Flower buds, Seeds, Pods	Le, Fl, Se	Le, Fr	H
196	Cleome hirta (Klotzsch) Oliv.	Capparaceae	Least Concern	Leaves, Seeds	Le, Se	NIL	H
197	Cleome monophylla L.	Capparaceae	Least Concern	Young leaves, Seeds, Whole plant	Le, Se, wp	NIL	H
198	Commelina diffusa	Commelinaceae	Least Concern	Whole plant	NIL	wp	H
199	Convolvulus sagittatus Thunb.	Convolvulaceae	Least Concern	Roots	NIL	Ro	H
200	Corechorus tridens L.	Tiliaceae	Not Evaluated	Leaves	Le	NIL	H
201	Crotalaria burkeana Benth.	Fabaceae	Least Concern	Whole plant	NIL	wp	H
202	Dicoma tomentosa Cass.	Asteraceae	Least Concern	Whole plant, Roots	NIL	wp, Ro	H
203	Epaltes alata (Sond.) Steetz	Asteraceae	Least Concern	Whole plant	NIL	wp	H
204	Ethulia conyzoides L.f.	Asteraceae	Least Concern	Whole plant	NIL	wp	H
205	Evolvulus alsinoides var. limifolius (L.) L.	Convolvulaceae	Least Concern	Leaves, Roots, Whole plant	NIL	Le, Ro, wp	H
206	Felicia mossamedensis (Hiern) Mendonca	Asteraceae	Least Concern	Whole plant	NIL	wp	H
207	Ferraria glutinosa (Baker) Rendle	Iridaceae	Least Concern	Bulbs	Ro	NIL	H
208	Harpagophytum zeyheri Decne. subsp. sublobatum (Engl.) Ihlenb.	Pedaliaceae	Least Concern	Roots	NIL	Ro	H
209	Heliotropium ciliatum Kaplan	Boraginaceae	Least Concern	Whole plant	NIL	wp	H
210	Heliotropium lineare (A.DC.) Gurke	Boraginaceae	Least Concern	Whole plant	NIL	wp	H
211	Hemizygia bracteosa (Benth.) Briq.	Lamiaceae	Least Concern	Leaves, Roots	NIL	Le, Ro	H
212	Hermibstaedia odorata (Burch.) T. Cooke var. aurantiaca	Amaranthaceae	Not Evaluated	Flower, Roots, Whole plant	NIL	Fl, Ro, wp	H
213	Hibiscus pusillus Thunb.	Malvaceae	Least Concern	Roots	NIL	Ro	H
214	Indigofera flavicans Baker	Fabaceae	Least Concern	Roots	NIL	Ro	H
215	Indigofera holubii N.E.Br.	Fabaceae	Least Concern	Whole plant	NIL	wp	H
216	Indigofera oxytropis Benth. ex. Harv.	Fabaceae	Least Concern	Whole plant	NIL	wp	H
217	Ipomoea rubens Choisy	Convolvulaceae	Least Concern	Root, Stem	NIL	Ro, St	H
218	Jasminum fluminense	Oleaceae	Least Concern	Leaf, Root Ba	NIL	Le, Ro Ba	H
219	Justicea anselliana (Nees) T. Anders.	Acanthaceae		Leaves, Root	Le	Ro, Le	H
220	Justicea kirkiana T. Anders.	Acanthaceae	Least Concern	Leaves, Roots	NIL	Le, Ro	H
221	Kyphocarpa angustifolia (Moq.) Lopr.	Amaranthaceae	Least Concern	Whole plant, Roots	NIL	wp, Ro	H
222	Lantana angolensis Moldenke	Verbenaceae	Kgobe-tsaba disana	Fruits	Fr	NIL	H
223	Leonotis nepetifolia (L.) R.Br.	Lamiaceae	Least Concern	Leaves, Seeds, Flower, Whole plant	Fl	Le, Se, Fl, wp	H
224	Limeum fenestratum (Fenzl) Heimerl	Molluginaceae	Least Concern	Roots	NIL	Ro	H
225	Limnophyton angolense	Alismataceae	Least Concern	Whole plant	wp	wp	H
226	Monsonia angustifolia E.Mey. ex A.Rich	Geraniaceae	Least Concern	Whole plant	NIL	wp	H
227	Ocimum canum (= O. americanum) (= O. fruticosum) (= O. di	Lamiaceae	Least Concern	Leaves, Seeds, Twigs, Sprigs, Fruits, Flowers	Le, St, Se	Le, Se, Fr, Fl	H
228	Ottelia ulvifolia (Planch.) Walp.	Hydrocharitaceae	Least Concern	Ovary Water	NIL	Fl	H

229	<i>Oxygonum alatum</i> Burch.	Polygonaceae	Least Concern	Leaves, Root, Fruit, Seeds	Le	Ro, Le, Fr	H
230	<i>Persicaria limbata</i> (Meisn.) H.Hara	Polygonaceae	Least Concern	Roots, Leaves, Whole plant	NIL	Ro, Le, wp	H
231	<i>Pollichia campestris</i> Aiton	Caryophyllaceae	Least Concern	Fruits, Whole plant	Fr	wp	H
232	<i>Portulaca kermesina</i> N. E. Br.	Portulacaceae	Least Concern	Leaves, Whole plant	Le	wp	H
233	<i>Pseudognaphalium luteo-album</i> (L.) Hillard & B.L.Burt (=Gnaphalium)	Asteraceae	Least Concern	Whole plant	NIL	wp	H
234	<i>Pupalia lappacea</i> (L.) A.Juss. var. <i>lappacea</i>	Amaranthaceae	Least Concern	Leaves, Whole plant, Root, Fruits	NIL	Le, wp, Ro, Fr	H
235	<i>Raphionacme burkei</i> N. E. Br.	Periploceae	Least Concern	Tubers	Ro	NIL	H
236	<i>Rhynchosia caribaea</i>	Fabaceae	Least Concern	Roots	Ro	NIL	H
237	<i>Selago densiflora</i> Rolfe (= <i>Walafrida densiflora</i> (Rolfe) Rolfe)	Scrophulariaceae	Least Concern	Whole plant	NIL	wp	H
238	<i>Sesamum angustifolium</i> (Oliv.) Engl.	Pedaliaceae	Onduri	Leaves, Flowers, Stems	NIL	Le, Fl, St	H
239	<i>Sesamum triphyllum</i> var. <i>triphyllum</i> (= <i>Sesamum gibbosum</i>)	Pedaliaceae	Least Concern	Leaves,Roots,Seeds,Plant stalk	Se	Le, Br, Ro	H
240	<i>Spermacoce senensis</i> (Klotzsch) Hiern	Rubiaceae	Least Concern	Roots	NIL	Ro	H
241	<i>Striga asiatica</i> (L.) Kuntze	Scrophulariaceae	Least Concern	Whole plant	NIL	wp	H
242	<i>Striga bilabiata</i> (Thunb.) Kuntze subsp. <i>Bilabiata</i>	Scrophulariaceae	Least Concern	Whole plant	NIL	wp	H
243	<i>Trapa natans</i> L. var. <i>bispinosa</i> (Roxb.) Makina	Trapaceae	Least Concern	Seed kernel, Fruit	Se, Fr	NIL	H
244	<i>Tribulus terrestris</i> L.	Zygophyllaceae	Least Concern	Leaves, Whole plant, Thorns	Le	Fr, wp	H
245	<i>Triumfetta rhomboidea</i> Jacq.	Tiliaceae	Least Concern	RootBa	NIL	Ro,Bark (Ba)	H
246	<i>Typha capensis</i> (Rohrb.) N. E. Br.	Typhaceae	Least Concern	Root, Flower, Lower Stem, Shoots, Whole plant	Ro, St,Sh	Fl, Ro, Le	H
247	<i>Vahlia capensis</i> (L.f) Thunb. subsp. <i>vulgaris</i> Bridson var. <i>vulgaris</i>	Vahliaceae	Not Evaluated	Whole plant, Leaves	NIL	wp, Le	H
248	<i>Vernonia anthelmintica</i> (L.) Willd.	Asteraceae	Xaa	Seeds	NIL	Se	H
249	<i>Vernonia poskeana</i> Vatke & Hildebr. subsp. <i>botswanaica</i> G. V. P.	Asteraceae	Phiho, Magoleng,Mo	Leaves	Le	Le	H
250	<i>Wahlenbergia napiformis</i> (A. DC.) Thulin	Campanulaceae		Whole plant	wp	NIL	H
251	<i>Waltheria indica</i> L.	Sterculiaceae	Least Concern	Flower, Leaves, Roots, Whole plant	Le	Fl, Le, Ro, wp	H
252	<i>Craterostigma plantagineum</i> Hochst.	Scrophulariaceae	Least Concern	Roots, Whole plant	NIL	Ro, wp	H, Su
253	<i>Euphorbia inaequilatera</i> Sond. var. <i>inaequilatera</i>	Euphorbiaceae	Least Concern	Leaves, Stems	NIL	Le, St	H, S
254	<i>Aloe zebrina</i> Bak.	Asphodelaceae	Least Concern	Flower, Leaves, Plant Stalk	Fl, Le, St	Le	H
255	<i>Commelina benghalensis</i> L.	Commelinaceae	Least Concern	Leaves, Latex & Bud Mucilage, Whole plant	Le	Sa, wp	H, C
256	<i>Corallocarpus bainesii</i> (Hook.f.) A.Meeuse	Cucurbitaceae	Least Concern	Fruit, Leaves, Stems, Roots	Le, St	Ro, Fr	H, C
257	<i>Ipomoea sinensis</i> (Desr.) Choisy subsp. <i>Blepharosepala</i> (A.Rich.)	Convolvulaceae	Least Concern	Young Leaves, Whole plant	Le	wp	H, C
258	<i>Vigna unguiculata</i> (L.) Walp. subsp. <i>unguiculata</i> var. <i>spontanea</i>	Fabaceae	Least Concern	Pods, Leaves,Seeds, Tubers on roots, Roots	Se, Fr, Le, Ro	Le, Ro	H, C
259	<i>Momordica balsamina</i> (=M. <i>involucrata</i>) (= M. <i>schinzii</i>)	Cucurbitaceae	Least Concern	Fruit, Seeds, Whole plant, Leaves	Fr, Le, Se, wp	Fr, Se, wp	H, Cl, Cr
260	<i>Abrus precatorius</i> L. subsp. <i>africanus</i> Verdc.	Fabaceae	Threatened	Whole plant, Leaves, Roots, Seeds	NIL	wp, Le, Ro, Se	H, C, S
261	<i>Dicerocaryum eriocarpum</i> (Decne.) Abels	Pedaliaceae	Least Concern	Leaves, Roots, Whole plant	Le	Le, Ro, wp	H, Cr
262	<i>Gomphrena celosioides</i> Mart.	Amaranthaceae	Not Evaluated	Leaves, Roots, Whole plant	NIL	Le, Ro, wp	H, Cr
263	<i>Limeum sulcatum</i> (Klotzsch) Hutch.	Molluginaceae	Least Concern	Roots	Ro	NIL	H, Cr
264	<i>Senna italica</i> Mill. subsp. <i>arachoides</i> (Burch.) Lock	Fabaceae	Least Concern	Whole plant, Roots	NIL	wp, Ro	H, Cr
265	<i>Xenostegia tridentata</i> (L.) D. F. Austin & Staples subsp. <i>Angustifolia</i>	Convolvulaceae	Least Concern	Whole plant, Roots, Leaves	Le	Le, Ro, wp	H, Cr
266	<i>Sansevieria aethiopica</i> Thunb.	Asparagaceae	Least Concern	Roots/Underground stem/Rhizome, Leaves	Ro	Le, Ro,	H, Ge, Su
267	<i>Limosella grandiflora</i> Benth.	Scrophulariaceae	Least Concern	Whole plant	NIL	wp	H
268	<i>Lapeirousia schimperi</i> (Asch. & Klaat) Milne-Redh.	Iridaceae		Corms	Ro	NIL	H
269	<i>Nymphaea lotus</i> L.	Nymphaeaceae	Least Concern	Rhizome, Seeds, Leaves, Flowers	Ro, Se	Fl, Le, Ro, wp	H
270	<i>Acalypha india</i> L.	Euphorbiaceae	Least Concern	Whole plant, Roots, Plant juice	NIL	wp, Ro, Sa	H, S
271	<i>Acanthospermum hispidum</i> DC.	Asteraceae	Not Evaluated	Fruits, Leaves	NIL	Fr, Le	H, S
272	<i>Amaranthus hybridus</i> L. subsp. <i>hybridus</i> var. <i>hybridus</i>	Amaranthaceae	Not Evaluated	Leaves, Roots	Le	Le, Ro	H, S
273	<i>Asystasia gangetica</i> (L.) T. Anderson	Acanthaceae	Least Concern	Whole plant, Leaves	NIL	wp, Le	H, S
274	<i>Bidens pilosa</i> (= B. <i>leucantha</i>)	Asteraceae	Not Evaluated	Leaves,Roots,Seeds,Plant Sa & extracts,Flowers	Le	Le, Ro, wp, Sa, Se, Sh,	H, S
275	<i>Clerodendrum ternatum</i> Schinz	Lamiaceae	Least Concern	Roots, Whole plant	NIL	Ro, wp	H, S
276	<i>Commelina africana</i> L. var. <i>lancispata</i> C.B.Clarke	Commelinaceae	Least Concern	Leaves, Stem, Whole plant	NIL	Le, St, wp	H, S
277	<i>Ipomoea bolusiana</i> Schinz	Convolvulaceae	Least Concern	Tuber, Small Tuberos roots	Ro	NIL	H, S
278	<i>Justicia betonica</i> L.	Acanthaceae	Least Concern	Leaves, Roots, Whole plant ash	NIL	Le, Ro, wp	H, S
279	<i>Pechuel-loeschea leubnitziae</i> (= <i>Pluchea leubnitziae</i>)	Asteraceae	Least Concern	Whole plant, Roots, Leaves	NIL	wp, Ro, Le	H, S
280	<i>Ricinus communis</i> L. var. <i>communis</i>	Euphorbiaceae	Not Evaluated	Roots, Stem, Leaves, Seeds	NIL	Ro, St, Le, Se	H, S
281	<i>Solanum panduriforme</i> Drege ex Dun.	Solanaceae	Least Concern	Roots, Fruits, Whole plant	Fr	Ro, wp, Fr	H, S
282	<i>Withania somnifera</i> (L.) Dunal	Solanaceae	Least Concern	Leaves, Roots, Whole plant	NIL	Le, Ro, wp	H, S
283	<i>Vernonia glabra</i> var. <i>laxa</i> (= <i>Linzia</i> var. <i>laxa</i>)	Asteraceae	Phiho,philo,phelo,sh	Leaves,roots	NIL	Le,Ro	H, S
284	<i>Kalanchoe lanceolata</i> (=K. <i>glandulosa</i>) (=K. <i>gregaria</i>) (=K. <i>glabra</i>)	Crassulaceae	Least Concern	Roots, Whole plant	NIL	Ro, wp	H, S,Su
285	<i>Talinum caffrum</i> (Thunb.) P.Eckl. & Zeyl.	Portulacaceae	Least Concern	Leaves, Roots	Le	Ro	H, S,Su
286	<i>Sesbania sesban</i> subsp. <i>seban</i>	Fabaceae	Least Concern	Flower, Leaves, Whole plant, Seeds	Fl	Se, Le, wp	H, S, T
287	<i>Asparagus africanus</i> Lam. (syn. <i>Protasparagus africanus</i> (Lam.)	Asparagaceae	Least Concern	Newly grown or Young shoots, Plant extract,	Sh	Sh, Ro, wp	H, S, C
288	<i>Gomphocarpus fruticosus</i> (L.) Aiton subsp. <i>rostratus</i> (N.E.Br) G.D.	Apocynaceae	Least Concern	Leaves,Roots,Fruit,Latex	NIL	Le,Ro,Fr, Sa	H, S
289	<i>Guibourtia coleosperma</i> (Benth.) J.Leonard	Fabaceae	Least Concern	Fruit coverings, Seeds	Fr, Se	NIL	T
290	<i>Euphorbia tirucalli</i> L.	Euphorbiaceae	Least Concern	Whole plant	NIL	wp	T
291	<i>Schinziophyton rautanenii</i> (Schinz) Radcl. Sm. (syn. <i>Ricinodendron</i>)	Euphorbiaceae	Least Concern	Nut-kernel	Fr	NIL	T
292	<i>Dicoma schinzii</i> O.Hoffm.	Asteraceae	Least Concern	Whole plant	NIL	wp	H
293	<i>Crinum foetidum</i> verdoorn	Amaryllidaceae	Least Concern	Bulbs	NIL	Ro	H
294	<i>Crinum harmsii</i> Baker	Amaryllidaceae	Mogaga	Whole plant, Bulb layers	NIL	wp, Ro	H

295	<i>Aptosimum decumbens</i> Schinz	Scrophulariaceae		Leaves, Whole plant	NIL	Le, wp	Cr
296	<i>Gisekia africana</i> (Lour.) Kuntze	Aizoaceae	Least Concern	Tuber, Whole plant	Ro, wp	NIL	Cr
297	<i>Indigofera alternans</i> DC. var. <i>alternans</i>	Fabaceae	Least Concern	Leaves, Flowers	Le, Fl	NIL	Cr
298	<i>Indigofera charlieriana</i> Schinz var. <i>scaberrima</i> (Schinz) J. B. Gilg	Fabaceae	Least Concern	Roots	NIL	Ro	Cr
299	<i>Trichilia emetica</i> Vahl	Meliaceae	Least Concern	Ba, Seeds, Leaves	Se	Ba, Le	T
300	<i>Albizia anthelmintica</i> Brongn.	Fabaceae	Least Concern	Ba	NIL	Ba	T
301	<i>Cynodon dactylon</i> (L.) Pers.	Poaceae	Least Concern	Leaves, Whole plant	Le	wp	G
302	<i>Eleusine indica</i> (L.) Gaertn.	Poaceae	Least Concern	Seeds	Se	NIL	G
303	<i>Panicum maximum</i> Jacq.	Poaceae	Least Concern	Seeds	Se	NIL	G
304	<i>Geigeria schinzii</i> O.Hoffm. subsp. <i>rhodesiana</i> (S.Moore) Merxm	Asteraceae		Flowers	Fl	NIL	G
305	<i>Adenia glauca</i> Schinz	Passifloraceae	Least Concern	Fruits	Fr	NIL	S
306	<i>Aptosimum lineare</i> Marloth & Engl. var. <i>lineare</i>	Scrophulariaceae	Least Concern	Whole plant	NIL	wp	S
307	<i>Asparagus bechuanicus</i> Baker	Asparagaceae	Least Concern	New shoots, Roots, Whole plant	NIL	Sh, Ro, wp	S
308	<i>Asparagus larinicus</i> (Burch.) Oberm.	Asparagaceae	Least Concern	Young shoots, Roots, Whole plant, Flowers	Fl, Sh	wp, Ro	S
309	<i>Asparagus suaveolens</i> (Burch.) Oberm.	Asparagaceae	Least Concern	Young shoots, Whole plant	Sh	wp	S
310	<i>Athrixia elata</i> Sond.	Asteraceae	Least Concern	Leaves, Roots	Le	Ro	S
311	<i>Euphorbia schinzii</i> Pax	Euphorbiaceae	Least Concern	Leaves, Stem	NIL	Le, St	S
312	<i>Felicia muricata</i> (Thunb.) Nees subsp. <i>Muricata</i>	Asteraceae	Least Concern	Whole plant	NIL	wp	S
313	<i>Gnidia burchellii</i> (Meisn.) Gilg	Thymelaeaceae	Least Concern	Roots	NIL	Ro	S
314	<i>Gnidia capitata</i> L.f.	Thymelaeaceae	Least Concern	Whole plant, Leaves	NIL	wp, Le	S
315	<i>Hirpicium bechuanense</i> (S.Moore) Roessler	Asteraceae	Kgalemela, Mokgale	Roots	NIL	Ro	S
316	<i>Lantana rugosa</i> Thunb.	Verbenaceae	Least Concern	Fruits, Whole plant	Fr	wp	S
317	<i>Leonotis intermedia</i> Lindl. (= <i>Leonotis dysophylla</i> Benth.)	Lamiaceae	Least Concern	Flowers, Whole plant	Fl	wp	S
318	<i>Lippia javanica</i> (Burm.f.) Spreng.	Verbenaceae	Least Concern	Leaves, Whole plant	Le	wp	S
319	<i>Lycium cinereum</i> Thunb.	Solanaceae	Least Concern	Fruits, Whole plant	Fr, wp	NIL	S
320	<i>Psiadia punctulata</i> (DC.) Oliv. & Hiern ex Vatke	Asteraceae	Least Concern	Roots, Branches, Leaves	NIL	Ro, Br, Le	S
321	<i>Solanum lichtensteini</i> Willd. (= <i>Solanum incanum</i> f. <i>incanum</i> authors, not c	Solanaceae	Least Concern	Roots, Fruit juice, Leaves	NIL	Ro, Fr, Le	S
322	<i>Solanum supinum</i> Dunal var. <i>supinum</i>	Solanaceae	Least Concern	Whole plant	NIL	wp	S
323	<i>Viscum combreticola</i> Engl.	Viscaceae	Least Concern	Whole plant	NIL	wp	S
324	<i>Viscum rotundifolium</i> L.f.	Viscaceae	Least Concern	Whole plant	NIL	wp	S
325	<i>Viscum verrucosum</i> Harv.	Viscaceae	Least Concern	Whole plant	NIL	wp	S
326	<i>Cardiospermum halicacabum</i> L. var. <i>halicacabum</i>	Saindaceae	Least Concern	Leaves, Whole plant	Le	wp	S, C
327	<i>Sphendamoecarpus pruriens</i> (Juss.) Szyszyl. subsp. <i>pruriens</i>	Malpighiaceae	Least Concern	Roots	NIL	Ro	S, C
328	<i>Artemisia afra</i> Jacq. ex Willd.	Asteraceae	Least Concern	Leaves, Whole plant	NIL	Le, wp	S, H
329	<i>Becium angustifolium</i> (Benth.) N.E.Br	Lamiaceae	Least Concern	Roots	NIL	Ro	S, H
330	<i>Jatropha zeyheri</i> Sond.	Euphorbiaceae	Least Concern	Leaves, Rhizomes, Tubers, Young shoots	Le	Ro, Sh	S, H
331	<i>Justicia flava</i> (Vahl) Vahl	Acanthaceae	Least Concern	Roots, Leaves	NIL	Ro, Le	S, H
332	<i>Pavonia transvaalensis</i> (Ulbr.) A.Meeuse	Malvaceae	Least Concern	Young leaves	Le	NIL	S, H
333	<i>Kalanchoe paniculata</i> Harv.	Crassulaceae	Least Concern	Whole plant	NIL	wp	S, Su
334	<i>Kalanchoe rotundifolia</i> (Haw.) Haw.	Crassulaceae	Least Concern	Whole plant, Branches	NIL	wp, Br	S, Su
335	<i>Kleinia longiflora</i> DC.	Asteraceae	Least Concern	Whole plant	NIL	wp	S, Su
336	<i>Jamesbrittenia burkeana</i> (Benth.) Hilliard	Scrophulariaceae	Least Concern	Leaves, Roots	NIL	Le, Ro	S, Su
337	<i>Aeollanthus buchnerianus</i> Briq.	Lamiaceae	Least Concern	Whole plant	NIL	wp	S, H, Su
338	<i>Cyphostemma omburens</i> (Gilg & M.Brandt) Desc.	Vitaceae	Least Concern	Fruit	Fr	NIL	C
339	<i>Ipomoea chloroneura</i> Hallier f.	Convolvulaceae	Least Concern	Whole plant	NIL	wp	H
340	<i>Combretum mossambicense</i> (Klotzsch) Engl.	Combretaceae	Least Concern	Roots	NIL	Ro	S
341	<i>Eleocharis acutangula</i> (Roxb.) Schult.	Cyperaceae	Least Concern	Tubers	Ro	NIL	Se
342	<i>Fuirenia pubescens</i> (Poir.) Kunth	Cyperaceae	Least Concern	Tubers	Ro	NIL	Se
343	<i>Kyllinga alba</i> Nees	Cyperaceae	Least Concern	Roots	NIL	Ro	Se
344	<i>Cyperus articulatus</i> L.	Cyperaceae	Least Concern	Roots/Underground Stem	NIL	Ro, St	Se
345	<i>Cyperus fulgens</i> C. B. Cl var. <i>contractus</i> Kuekenth.	Cyperaceae	Least Concern	Bulbs	Ro	NIL	Se
346	<i>Cyperus papyrus</i> L.	Cyperaceae	Least Concern	Stems, Pulp	St	St	Se
347	<i>Laggera decurrens</i> (Vahl) Hepper & J.R.I.Wood	Asteraceae	Least Concern	Roots, Stem	NIL	Ro, St	H
348	<i>Amaranthus standleyanus</i> Parodi ex Cavas	Amaranthaceae	Not Evaluated	Leaves, Whole plant	Le	wp	S
349	<i>Carissa edulis</i> (Forssk.) Vahl	Apocynaceae	Least Concern	Fruits, Roots (Ba), Leaves, Whole plant	Fr, Ro	Ro, Ba, Le, wp	S
350	<i>Clerodendrum uncinatum</i> Schinz (syn. <i>Rotheca uncinata</i> (Schinz)	Lamiaceae	Least Concern	Whole plant, Fruits, Roots	Fr	wp, Ro	S
351	<i>Dichrostachys cinerea</i> subsp. <i>africana</i>	Fabaceae	Least Concern	Leaves, Ba, Roots, Seeds, Pods	NIL	Le, Ba, Ro, Se, Fr	S
352	<i>Eclipta prostrata</i> (L.) L.	Asteraceae	Least Concern	Whole plant	NIL	wp	S
353	<i>Elephantorrhiza elephantina</i> (Burch.) Skeels	Fabaceae	Least Concern	Whole plant, Pods	Fr	wp	S
354	<i>Eriocephalus aspalathoides</i> DC.	Asteraceae	Least Concern	Whole plant	NIL	wp	S
355	<i>Gnidia sericeocephala</i> (Meisn.) Gilg ex Engl.	Thymelaeaceae	Least Concern	Whole plant	NIL	wp	S
356	<i>Gomphrena fruticosa</i> (L.) Aiton subsp. <i>rostratus</i> (N. E. Br.) Go	Amaranthaceae	Least Concern	Leaflets, Pods, Latex	NIL	Le, Fr, Sa	S
357	<i>Grewia bicolor</i> Juss.	Tiliaceae	Least Concern	Leaves, Fruits, Roots	Fr, Le	Ro	S
358	<i>Grewia flavescens</i> Juss.	Tiliaceae	Least Concern	Fruits, Leaves, Roots	Fr	Ro, Le	S
359	<i>Grewia retinervis</i>	Tiliaceae	Least Concern	Fruits	Fr	NIL	S
360	<i>Helichrysum kraussii</i> Sch.Bip.	Asteraceae	Least Concern	Whole plant	NIL	wp	S

361	<i>Hibiscus calyphyllus</i> (= <i>H. calycinus</i>)	Malvaceae	Least Concern	Flowers, Roots	Fl	Ro	S
362	<i>Hibiscus diversifolius</i> Jacq. subsp. <i>Rivularis</i>	Malvaceae	Least Concern	Flower, Root	Fl	Fl, Ro	S
363	<i>Indigofera cryptantha</i> Benth. ex Harv. var. <i>cryptantha</i>	Fabaceae	Least Concern	Whole plant	NIL	wp	S
364	<i>Indigofera tinctoria</i> var. <i>arcuata</i>	Fabaceae	Least Concern	Leaves, Whole plant	NIL	Le, wp	S
365	<i>Melhania acuminata</i> Mast. var. <i>acuminata</i>	Sterculiaceae	Least Concern	Roots, Whole plant	NIL	Ro, wp	S
366	<i>Mimosa pigra</i> L.	Fabaceae	Least Concern	Roots, Leaves	NIL	Ro, Le	S
367	<i>Phyllanthus reticulatus</i>	Euphorbiaceae	Least Concern	Ba, Leaves, Fruits	NIL	Ba, Le, Fr	S
368	<i>Rhus tenuinervis</i> Engl.	Anacardiaceae	Least Concern	Fruit, Leaves, Roots	Fr	Le, Br	S
369	<i>Sida cordifolia</i> L.	Malvaceae	Least Concern	Root, Leaves, Seed, Fruits	NIL	Ro, Le, Se, Fr	S
370	<i>Solanum nigrum</i> L.	Solanaceae	Not Evaluated	Leaves, Fruit	Le, Fr	Le, Fr	S
371	<i>Sutherlandia frutescens</i> (L.) R. Br.	Fabaceae	Least Concern	Leaves, Seeds	NIL	Le, Se	S
372	<i>Tephrosia purpurea</i> (L.) Pers. subsp. <i>Leptostachya</i>	Fabaceae	Not Evaluated	Whole plant, Leaves, Roots	NIL	wp, Le, Ro	S
373	<i>Pelargonium dolomiticum</i> R.Knuth	Geraniaceae	Least Concern	Whole plant	NIL	wp	S
374	<i>Stomatostemma monteiroae</i> (Oliv.) N.E.Br.	Apocynaceae	Least Concern	Whole plant	NIL	wp	S, C
375	<i>Indigofera filipes</i> Benth. ex Harv.	Fabaceae	Least Concern	Whole plant	NIL	wp	H, S
376	<i>Cassine transvaalensis</i>	Celastraceae	Least Concern	Fruit, Ba	Fr	Ba	S, T
377	<i>Vachellia tortilis</i> subsp. <i>heteracantha</i>	Fabaceae	Least Concern	G	Gum (G)	NIL	S, T
378	<i>Syzygium cordatum</i>	Myrtaceae	Least Concern	Fruit	Fr	NIL	S, T
379	<i>Vachellia karoo</i>	Fabaceae	Least Concern	G, Whole plant	G	wp	S, T
380	<i>Vachellia erubescens</i>	Fabaceae	Least Concern	G	G	NIL	S, T
381	<i>Antidesma venosum</i>	Euphorbiaceae	Least Concern	Fruit, Ba, Leaves, Roots	Fr	Ba, Le, Fr, Ro	S, T
382	<i>Bridelia cathartica</i>	Euphorbiaceae	Least Concern	Whole plant	NIL	wp	S, T
383	<i>Commiphora africana</i>	Burseraceae	Least Concern	G, Ba, Fruit	NIL	Gum (G), Ba, Fr	S, T
384	<i>Ehretia amoena</i>	Boraginaceae	Least Concern	Fruit	Fr	NIL	S, T
385	<i>Flacourtia indica</i>	Flacourtiaceae	Least Concern	Leaves, Roots, Ba, Fruit	Fr	Le, Ro, Ba	S, T
386	<i>Flueggea virosa</i>	Euphorbiaceae	Least Concern	Fruit, Roots, Ba	Fr	Fr, Ba	S, T
387	<i>Grewia schinzii</i>	Tiliaceae	Least Concern	Fruit	Fr	NIL	S, T
388	<i>Rhus quartiniana</i>	Anacardiaceae	Mabele-aditshwene	Fruit	Fr	NIL	S, T
389	<i>Vangueriopsis lanciflora</i>	Rubiaceae		Fruits, Ba, Roots	Fr, Barks (Ba), Ro	NIL	S, T
390	<i>Capparis tomentosa</i> Lam.	Capparaceae	Least Concern	Fruit, Leaves, Root Ba, Plant Ba	Fr	Ba, Ro, Le	S, T, C
391	<i>Cassine aethiopica</i>	Celastraceae	Least Concern	Fruit	Fr	NIL	S, T
392	<i>Tylosema esculentum</i> (Burch.) Schreiber (syn. <i>Bauhinia esculenta</i>)	Fabaceae	Least Concern	Seeds/Fr, Whole plant, Roots	Ro, Se, Fr	wp	S, Cr
393	<i>Abutilon angulatum</i> (Guill. & Perr.) Mast. var. <i>angulatum</i>	Malvaceae	Least Concern	Leaves, Whole plant	NIL	Le, wp	S, H
394	<i>Acalypha vilcaulis</i> Hochst. ex A.Rich.	Euphorbiaceae	Least Concern	Roots, Whole plant	NIL	Ro, wp	S, H
395	<i>Indigofera melanadenia</i> Benth. ex Harv.	Fabaceae	Least Concern	Whole plant	NIL	wp	S, H
396	<i>Phyllanthus parvulus</i> Sond. var. <i>parvulus</i>	Euphorbiaceae	Least Concern	Whole plant	NIL	wp	S, H
397	<i>Ruellia cordata</i> Thunb.	Acanthaceae	Least Concern	Whole plant	NIL	wp	S, H
398	<i>Ooptera burchellii</i> DC.(= <i>Vigna burchellii</i> (DC.) Harv.)	Fabaceae	Least Concern	Roots, Root Ba, Whole plant	NIL	Ro, Ba, wp	S, H, T, C
399	<i>Grewia flava</i>	Tiliaceae	Least Concern	Fruit, Roots	Fr	Ro	S, T
400	<i>Gymnosporia senegalensis</i> (Lam.) Loes.	Celastraceae	Least Concern	Roots, Ba	NIL	Ro, Ba	S, T
401	<i>Talinum crispatum</i> Dinter ex Ppöelln.	Portulacaceae	Least Concern	Whole plant, Roots	wp	Ro	S, Su
402	<i>Vachellia fleckii</i> Schinz	Fabaceae	Least Concern	Branches, G	G	Branches	S, T
403	<i>Senegalia mellifera</i> (Vahl) Benth. subsp. <i>Detinens</i>	Fabaceae	Least Concern	G, Roots, Ba	G	Ro, Ba	S, T
404	<i>Bauhinia petersiana</i> Bolle subsp. <i>Macrantha</i>	Fabaceae	Least Concern	Seeds, Leaves, Roots, Ba	Se, Ro	Ba, Le, Ro	S, T
405	<i>Combretum hereroense</i> Schinz	Combretaceae	Least Concern	Leaves, Fruits, Roots	Fr, Le	Ro, Fr	S, T
406	<i>Croton megalobotrys</i> Mull. Arg.	Euphorbiaceae	Least Concern	Ba, Roots, Leaves, Fruit ash, Seeds	NIL	Ba, Ro, Le, Fr, Se	S, T
407	<i>Diospyros lycioides</i> Desf. subsp. <i>sericea</i> (Bernh.) de Winter	Ebenaceae	Least Concern	Fruits, Roots, Seeds	Fr, Se	Ro	S, T
408	<i>Euclea divinorum</i> Hiern	Ebenaceae	Least Concern	Fruits, Roots, Whole plant	Fr	Ro, wp	S, T
409	<i>Ficus verruculosa</i>	Moraceae	Least Concern	Fruit	Fr	NIL	S, T
410	<i>Myrica serrata</i>	Myricaceae	Least Concern	Fruits, Stem	Fr, St	NIL	S, T
411	<i>Vernonia amygdalina</i>	Compositae	Least Concern	Twigs, Roots, Ba, Leaves, Whole plant	St, Ro, Le	Ro Ba, St, Ba, wp	S, T
412	<i>Ximenia americana</i> var. <i>americana</i>	Olacaceae	Least Concern	Fruit, Roots, Leaves, Ba, Seeds	Fr	Le, Ro, Ba, Se	S, T
413	<i>Ximenia caffra</i> var. <i>caffra</i>	Olacaceae	Least Concern	Fruit, Kernel, Roots, Leaves	Fr	Le, Ro, Fr	S, T
414	<i>Ziziphus mucronata</i> Willd. subsp. <i>mucronata</i>	Rhamnaceae	Least concern	Fruits, Seeds, Roots, Ba, Leaves	Fr, Se	Ro, Ba, Le	S, T
415	<i>Cissampelos mucronata</i> A. Rich	Menispermaceae	Least Concern	Leaves, Rhizomes, Root	Le	Ro	S, C
416	<i>Combretum apiculatum</i> Sond. subsp. <i>apiculatum</i>	Combretaceae	Least Concern	Roots	NIL	Ro	S, T
417	<i>Chenopodium album</i> L.	Chenopodiaceae	Not Evaluated	Leaves, Seeds	Le, Se	NIL	S
418	<i>Cassia abbreviata</i> Oliv. subsp. <i>beareana</i> (Holmes) Brenan	Fabaceae	Least Concern	Ba	NIL	Ba	T
419	<i>Euphorbia polycnemoides</i> Boiss.	Euphorbiaceae	Least Concern	Whole plant	NIL	wp	H
420	<i>Friesodielsia obovata</i> (Benth.) Verdc.	Annonaceae	Least Concern	fruit	Fr	NIL	S
421	<i>Enicostema axillare</i> (Lam.) A. Raynal subsp. <i>axillare</i>	Gentianaceae	Least Concern	Whole plant, Roots, Leaves, Flowers	NIL	wp, Ro, Le, Fl	H
422	<i>Solanum tettense</i> Klotzch var. <i>renschii</i>	Solanaceae	Least Concern	Whole plant	NIL	wp	H
423	<i>Duvalia polita</i> N.E.Br.	Apocynaceae	Least Concern	Stems, Underground stems	St, Ro	NIL	Su
424	<i>Hoodia currori</i> (Hook.) Deene	Apocynaceae		Stem	St	NIL	Su
425	<i>Orbea lutea</i> (N.E.Br.) Bruyns subsp. <i>Lutea</i>	Apocynaceae	Least Concern	Stems, Roots, Whole plant	St, Ro	wp	Su
426	<i>Stapelia gigantea</i> N.E.Br.	Apocynaceae	Least Concern	Stems, Whole plant	NIL	St, wp	Su

427	<i>Portulaca hereroensis</i> Schinz	Portulacaceae	Least Concern	Whole plant	wp	NIL	S, Cr
428	<i>Pterodiscus speciosus</i> Hook.	Pedaliaceae	Least Concern	Whole plant	NIL	wp	H
429	<i>Pavetta zeyheri</i> Sond.	Rubiaceae	Endangered	Leaves	Le	wp	T & S
430	<i>Tetradenia riparia</i> (Hochst.) Codd	Lamiaceae	Least Concern	Leaves	NIL	Le	T, S & Su
431	<i>Ipomoea shirambensis</i> Baker	Convolvulaceae	Least Concern	Roots	Ro	NIL	C
432	<i>Vachellia erioloba</i> E.Mey.	Fabaceae	Least Concern	Seeds, G, Pods, Ba, Roots	Se, G	Fr, Ba, G, Ro	T
433	<i>Vachellia luederitzii</i> var. <i>luederitzii</i>	Fabaceae	Least Concern	Ba	NIL	Ba	T
434	<i>Senegalia nigrescens</i> Oliv.	Fabaceae	Least Concern	Ba/Knobs, Roots, Leaves	Le	Ba, Ro	T
435	<i>Vachellia nilotica</i> subsp. <i>kraussiana</i>	Fabaceae	Least Concern	G	G, wp	wp	T
436	<i>Vachellia sieberana</i> var. <i>woodii</i>	Fabaceae	Least Concern	G, Roots, Ba, Thorns	G	Ro, Ba	T
437	<i>Adansonia digitata</i> L.	Bombacaceae	Least Concern	Fruits, Seeds, Young leaves, Ba, Fruit pulp, G	Fr, Se,Le, Sh, Ro, G	Ba, Le, Se	T
438	<i>Berehemia discolor</i> (Klotzsch) Hemsl.	Rhamnaceae	Least Concern	Fruits, Ba	Fr	Ba	T
439	<i>Boscia albitrunca</i> (Burch.) Gilg & Gilg-Ben.	Capparaceae	Least Concern	Roots, Unripe & Ripe fruit, Buds	Ro, Fr, Ba	Fl, Ro,Fr	T
440	<i>Burkea africana</i>	Fabaceae	Least Concern	G, Roots, Ba, Leaves	G	Ro, Ba, Le	T
441	<i>Colophospermum mopane</i> (Benth.) J.Leonard	Fabaceae	Least Concern	Ba, Roots, Leaves, G	NIL	Ba, Ro, Le, G	T
442	<i>Combretum imberbe</i> Wawra	Combretaceae	Least Concern	Leaves, G, Flowers	G	Le, Fl, wp	T
443	<i>Diospyros mespilliformis</i> Hoscht. ex A.DC.	Ebenaceae	Least Concern	Fruits, Leaves, Roots, Twigs, Ba	Fr	Le, Ro, Fr, Br, Ba	T
444	<i>Ekebergia capensis</i>	Meliaceae	Least Concern	Ba, Leaves, Roots	NIL	Ba, Le, Ro	T
445	<i>Faidherbia albida</i>	Fabaceae	Least Concern	Ba	NIL	Ba	T
446	<i>Ficus sycomorus</i>	Moraceae	Least Concern	Fruit, Ba, Latex	Fr	Ba, Sa	T
447	<i>Ficus thonningii</i> Blume (syn. <i>Ficus burkei</i> (Miq.) Miq.)	Moraceae	Least Concern	Roots, Ba	NIL	Ro, Ba	T
448	<i>Garcinia livingstonei</i> T.Anderson	Clusiaceae	Least Concern	G, Fruits, Leaves, Flowers, Roots	Fr, G	Le, Fl, Ro	T
449	<i>Gardenia volkensii</i> K.Schum. subsp. <i>Spatulifolia</i>	Rubiaceae	Least Concern	Roots, Fruits	NIL	Ro, Fr	T
450	<i>Hyphaene petersiana</i> Klotzsch ex Mart.	Arecaceae	Least Concern	Tree Sa, Fruit pulp, Stem crown-heart, Roots,	Sa, Fr, Le, St	Ro	T
451	<i>Kigelia africana</i> (Lam.) Benth. subsp. <i>africana</i>	Bignoniaceae	Least Concern	Seeds, Fruits, Ba, Leaves	Se, Fr	Fr, Ba, Se, Le, Ro	T
452	<i>Kirkia acuminata</i>	Simaroubaceae	Least Concern	Roots	Ro	NIL	T
453	<i>Markhamia zanzibarica</i> (= <i>Markhamia acuminata</i>)	Bignoniaceae	Least Concern	Roots	Ro	Ro	T
454	<i>Peltophorum africanum</i> Sond.	Fabaceae	Least Concern	Ba, Roots, Leaves	NIL	Ba, Ro, Le	T
455	<i>Philenoptera violacea</i>	Fabaceae	Least Concern	Leaves, Roots	Le	Ro, wp	T
456	<i>Phoenix reclinata</i> Jacq.	Arecaceae	Least Concern	Fruit, Tree heart-crown, Root G, Flower Sa	Fr, Ro, G, Fl, Sa	NIL	T
457	<i>Pterocarpus angolensis</i>	Fabaceae	Least Concern	Ba, Flowers, Roots, Leaves	NIL	Ba, Fl, Ro, Le	T
458	<i>Sclerocarya birrea</i> subsp. <i>caffra</i>	Anacardiaceae	Least Concern	Fruits, Kernels, Roots, Ba	Fr, Se, Ro	Ba, Se	T
459	<i>Syzygium guineense</i>	Myrtaceae	Least Concern	Fruits, Roots, Ba	Fr	Fr, Ro, Ba	T
460	<i>Terminalia prunioides</i>	Combretaceae	Least Concern	G	G	NIL	T
461	<i>Terminalia sericea</i> DC.	Combretaceae	Least Concern	G, Leaves, Ba, Roots	G	Le, Ba, Ro	T
462	<i>Vachellia hebeclada</i> subsp. <i>hebeclada</i>	Fabaceae	Least Concern	G, Roots, Whole plant	G	Ro, wp	T, S
463	<i>Albizia harveyi</i> E.Fourn.	Fabaceae	Least Concern	G, Roots, Whole plant	G	Ro, wp	T, S
464	<i>Cyathula orthocantha</i> (Aschers.) Schinz	Amaranthaceae	Least Concern	leaves, stem, whole plant	NIL	Le, St, wp	H
465	<i>Sansevieria pearsonii</i> N.E.Br.	Asparagaceae	Least Concern	Stem juice	NIL	St, Sa	Su
466	<i>Brasenia schreberi</i> J.F Gmel.	Cabombaceae	Least Concern	Mucilage from underneath leaves, stems & p	NIL	Sa, Le, St	
467	<i>Catharanthus roseus</i> (L.) G.Don	Apocynaceae	Not Evaluated	Whole plant	NIL	wp	H, S

Copyright:©2023 Demel Teketay, et al. This is an open-access article distributed under the terms of the Creative Commons Attribution License, which permits unrestricted use, distribution, and reproduction in any medium, provided the original author and source are credited.